



American Indian Maternal and Child Health Data Review



MCH Assessment Division

Oklahoma State Department of Health

Published | 8/1/2019

Demographics

	AI/AN	OK (All Races)
Population (total) ¹	363,551	3,930,864
Women ages 15-44 ¹	79,370	768,751
Birth rate ³	13.9	12.8
Teen birth rate (15-19 years) ³	35.8	29.6

Chronic Conditions

	AI/AN	OK (All Races)
Diabetes ²	5.3	4.0
High blood pressure ²	7.8	6.8
Depression ²	15.8	16.0
Asthma ²	14.3	12.2
Anemia ²	19.6	14.2
Thyroid ²	4.7	6.9
PCOS ²	7.6	6.7

Postpartum Health

	AI/AN	OK (All Races)
Initiate breastfeeding ²	80.4	84.7
Breastfeeding 8 weeks or more ²	48.1	56.2
Infant back sleep position ²	79.9	76.1
Infant bed-sharing ²	50.3	44.3
Postpartum birth control use ²	81.1	80.7
Postpartum depression ²	12.9	14.6

Major Causes of Infant Deaths⁴

- Congenital malformation
- Preterm and low birth weight
- Sudden infant death syndrome
- Accidents
- Newborn affected by maternal complications

Preconception

	AI/AN	OK (All Races)
Smoking in 3 months prior ²	33.3	23.5
Alcohol use 3 months prior ²	50.1	51.5
Multivitamin/Folic acid Use ²	31.4	42.1
Maternal overweight/obesity ²	59.3	55.0

Pregnancy Health

	AI/AN	OK (All Races)
Prenatal Care in 1st trimester ³	65.3	59.7
Pregnancy Intention ²		
Unintended	29.2	30.0
Not Sure	21.7	18.3
Percent of mothers on Medicaid ²	62.3	57.5

Birth Outcomes

	AI/AN	OK (All Races)
Infant mortality rate (IMR) ⁴	10.0	7.5
Preterm rate ³	10.9	11.1
Low birth weight ³	7.6	8.1

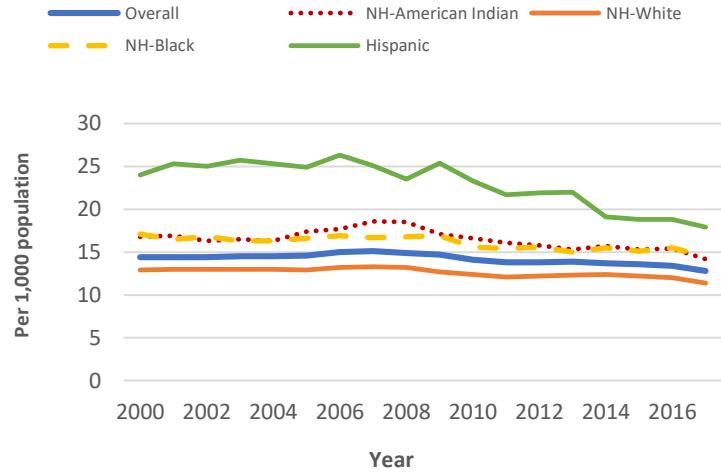
Quick Facts

	Improving	Rising
Infant mortality rate		10.0
Smoking		33.3
Infant bed sharing		50.3
Birth control use	81.1	
Teen birth rate		35.8
Overweight / Obesity		59.3
Low birth weight	7.6	



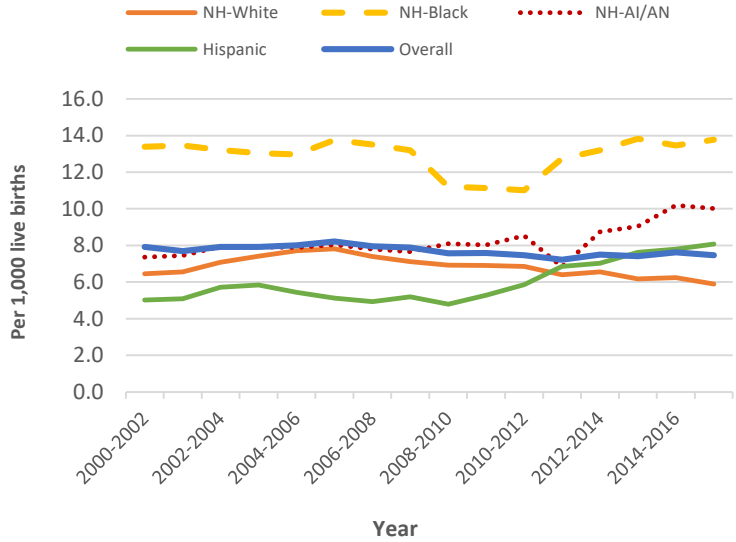
Crude Birth Rates by Race & Hispanic Origin, Oklahoma 2000 - 2017

Year	Overall	NH-American Indian	NH-White	NH-Black	Hispanic
2000	14.4	16.8	12.9	17.1	24.0
2001	14.4	16.9	13.0	16.5	25.3
2002	14.4	16.3	13.0	16.8	25.0
2003	14.5	16.5	13.0	16.3	25.7
2004	14.5	16.3	13.0	16.3	25.3
2005	14.6	17.4	12.9	16.6	24.9
2006	15.0	17.7	13.2	16.9	26.3
2007	15.1	18.6	13.3	16.7	25.1
2008	14.9	18.5	13.2	16.8	23.5
2009	14.7	17.1	12.7	16.9	25.4
2010	14.1	16.6	12.4	15.6	23.3
2011	13.8	16.1	12.1	15.4	21.7
2012	13.8	15.8	12.2	15.6	21.9
2013	13.9	15.3	12.3	15.0	22.0
2014	13.7	15.7	12.4	15.5	19.1
2015	13.6	15.3	12.2	15.1	18.8
2016	13.4	15.4	12.0	15.5	18.8
2017	12.8	14.2	11.4	14.5	17.9



Infant Mortality by Race & Hispanic Origin, Oklahoma 2000 - 2017

Year of Death	NH-White	NH-Black	NH-AI/AN	Hispanic	Overall
2000-2002	6.5	13.4	7.4	5.0	7.9
2001-2003	6.6	13.5	7.4	5.1	7.7
2002-2004	7.1	13.2	7.9	5.7	7.9
2003-2005	7.4	13.0	7.9	5.8	7.9
2004-2006	7.7	13.0	7.9	5.4	8.0
2005-2007	7.8	13.7	8.0	5.1	8.2
2006-2008	7.4	13.5	7.8	4.9	7.9
2007-2009	7.1	13.2	7.7	5.2	7.9
2008-2010	6.9	11.2	8.1	4.8	7.6
2009-2011	6.9	11.1	8.0	5.3	7.6
2010-2012	6.8	11.0	8.5	5.9	7.5
2011-2013	6.4	12.7	6.8	6.9	7.2
2012-2014	6.6	13.2	8.7	7.0	7.5
2013-2015	6.2	13.8	9.0	7.6	7.4
2014-2016	6.2	13.5	10.2	7.8	7.6
2015-2017	5.9	13.8	10.0	8.1	7.5



Technical Notes

- Maternal Overweight/Obesity — Pre-pregnancy Body Mass Index (BMI) of 25.0 or greater.
- Infant Mortality Rate — Number of deaths before day 365/1,000 live births.
- Birth rate—Number of Resident Live Births/1000 Female Resident Population.
- Preterm Birth—Percentage of all live births less than 37 completed weeks gestation but more than 19 weeks.
- Unintended Pregnancy—Percentage of women with live births who indicated they wanted to be pregnant later or not at all when they became pregnant.
- Low Birth Weight—Birth weight less than 2,500 grams.
- Postpartum Depression — Mothers reporting yes to sometimes or to always being depressed, hopeless or having little interest or pleasure in doing things.
- Moving averages removes fluctuations in rates for multiple years.
- PCOS — Polycystic ovarian syndrome.

Data Sources

- Population estimates 2017 U.S. Census Bureau, Population Division.
- PRAMS 2016-2017 – Maternal and Child Health Service, Oklahoma State Department of Health (OSDH).
- Oklahoma Vital Statistics - Births 2017- Health Care Information, OSDH.
- Oklahoma Vital Statistics Infant Deaths 2015-2017- Health Care Information, OSDH.

Data Qualification

Relative to 2016, there is a 5% decline in resident births for the year 2017. No clear reason or trend is known for this decline.