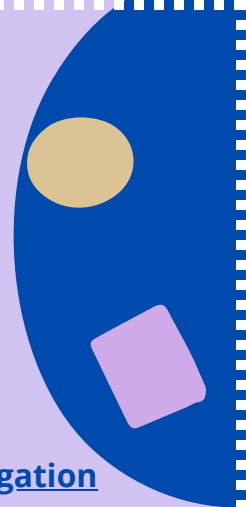
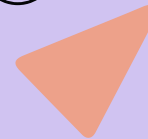


Oklahoma Maternal Health

Taskforce Partners



- [Ascension](#)
- [Cherokee Nation](#)
- [Comanche County Memorial Hospital](#)
- [Community Health Centers, Inc.](#)
- [Duncan Regional Hospital](#)
- [George Kaiser Family Foundation](#)
- [Healthy Start](#)
- [Indian Health Services](#)
- [Integris Medical Center](#)
- [Mercy Hospital](#)
- [Norman Regional Hospital](#)
- [Oklahoma City County Health Department](#)
- [Oklahoma City Indian Clinic](#)
- [Oklahoma Family Network](#)
- [Oklahoma Healthcare Authority](#)
- [OU Health Sciences Center](#)
- [Oklahoma Hospital Association](#)
- [Oklahoma Perinatal Quality Improvement Collaborative](#)
- [Oklahoma Senate](#)
- [Oklahoma State Bureau of Investigation](#)
- [Oklahoma State Department of Health](#)
- [Oklahoma Department of Human Services](#)
- [Oklahoma Department of Mental Health and Substance Abuse Services](#)
- [OU Medicine](#)
- [Oklahoma Office of the Chief Medical Examiner](#)
- [OU Physicians STAR Clinic](#)
- [Oklahoma Women’s Coalition](#)
- [Parent Child Center](#)
- [Saint Francis Hospital](#)
- [SSM Health](#)
- [Southern Plains Tribal Health Board](#)
- [Take Control Initiative](#)
- [The Perinatal Center](#)
- [Tulsa Birth Equity Initiative](#)
- [Tulsa Health Department](#)
- [Universal Health Services, Inc.](#)
- [Variety Care](#)

