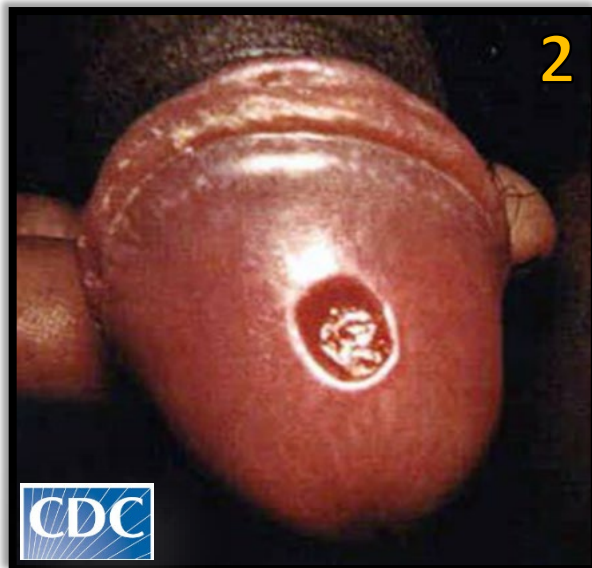
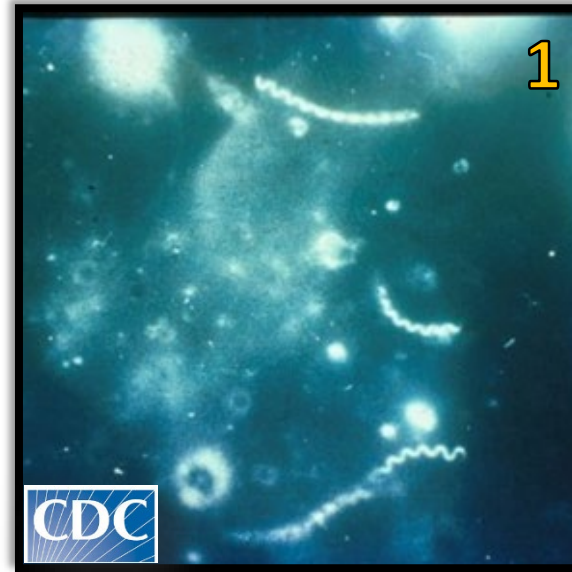


NOTICE: The following document contains images and information that might not be appropriate for all audiences. This may include images that some may find disturbing and information about sexual practices and sharing needles. If you are not seeking such information or may be offended, please do not continue.

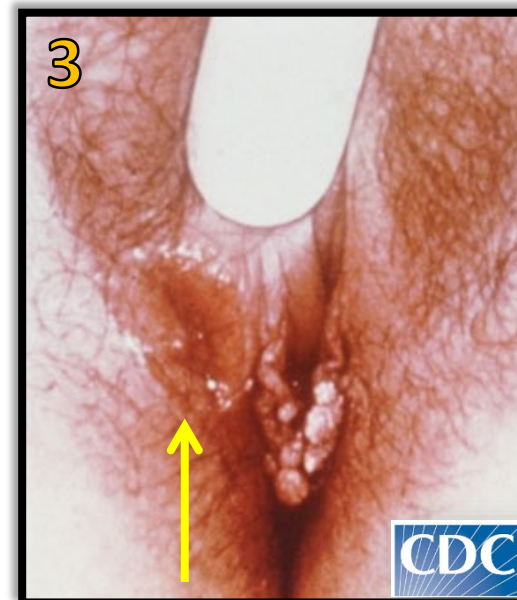
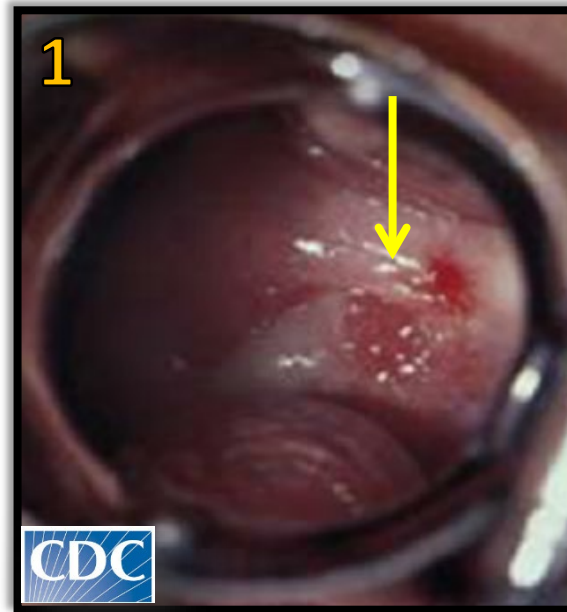
# Primary Syphilis

1. Spirochetes
2. Primary chancre on penis



# Primary Syphilis

1. Primary chancre on cervix
2. Primary chancre on labia
3. Primary chancre on labia and herpes
4. Primary chancre on labia - "Kissing Lesions"





# Primary Syphilis

other common sites

1. Primary chancre on tongue
2. Primary chancre in mouth
3. Primary chancre on lower lip
4. Primary chancre - anal
5. Primary chancre on finger

