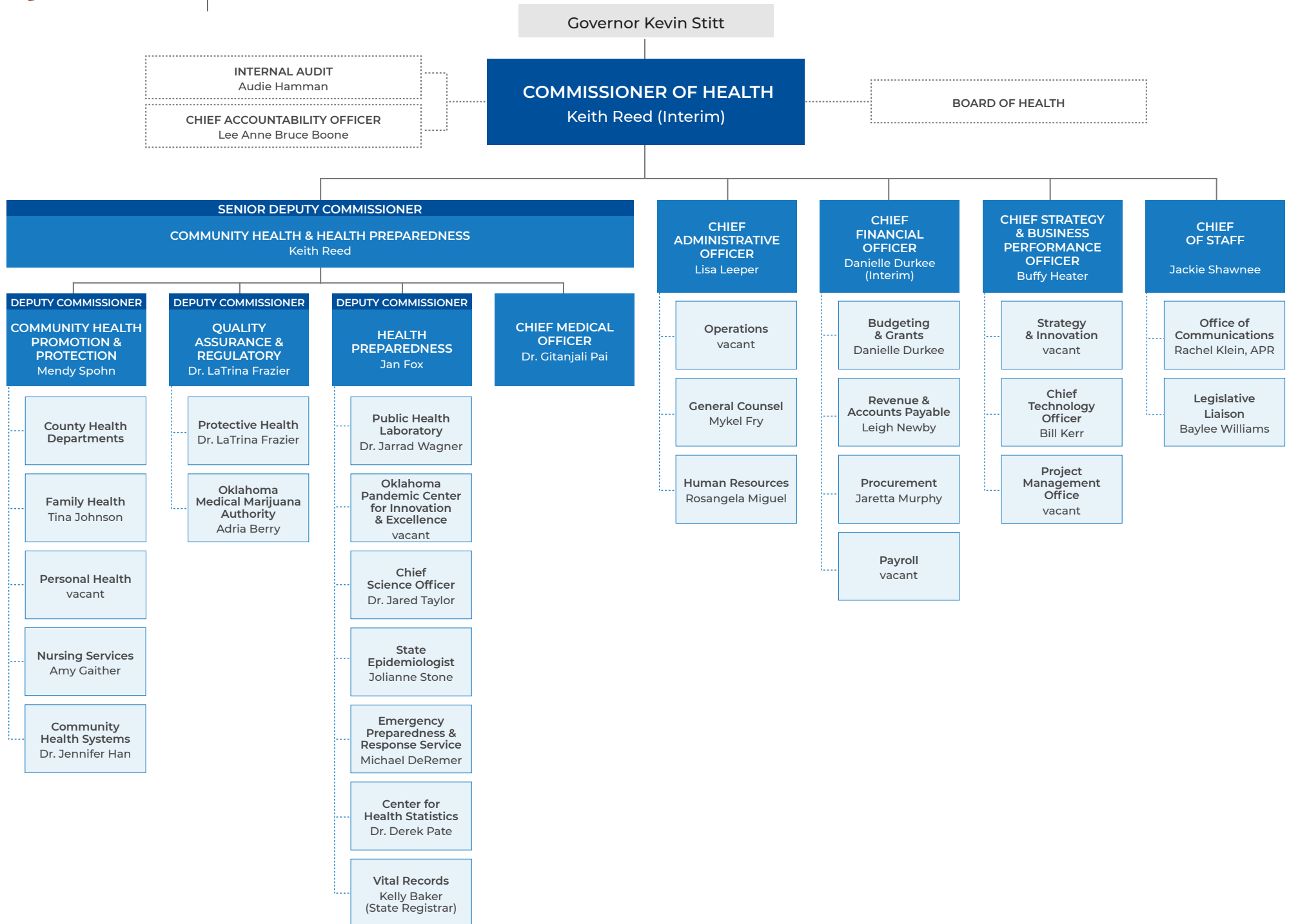
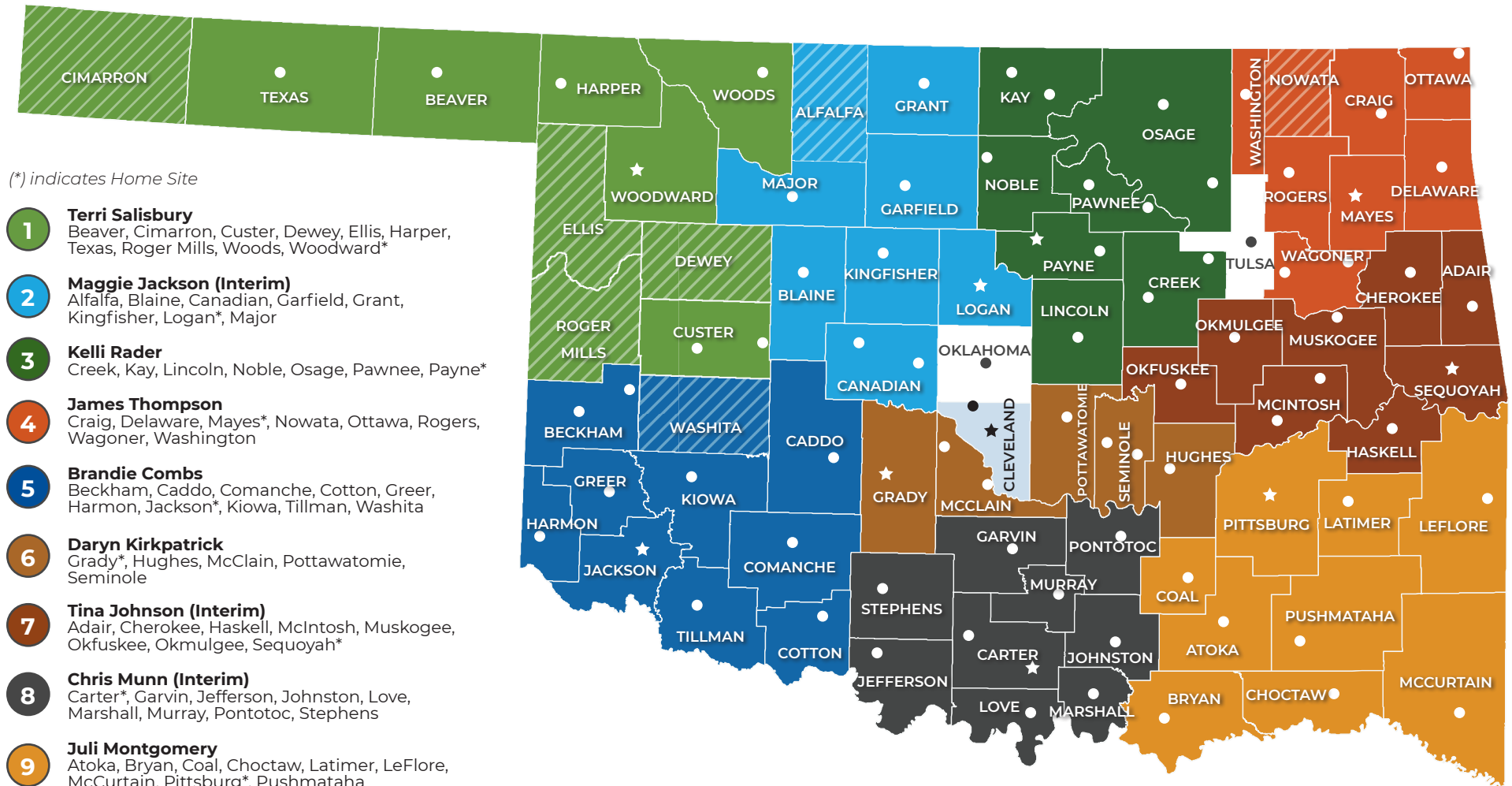


ORGANIZATION

as of January 20, 2022





(*) indicates Home Site

- 1 Terri Salisbury**
Beaver, Cimarron, Custer, Dewey, Ellis, Harper, Texas, Roger Mills, Woods, Woodward*
- 2 Maggie Jackson (Interim)**
Alfalfa, Blaine, Canadian, Garfield, Grant, Kingfisher, Logan*, Major
- 3 Kelli Rader**
Creek, Kay, Lincoln, Noble, Osage, Pawnee, Payne*
- 4 James Thompson**
Craig, Delaware, Mayes*, Nowata, Ottawa, Rogers, Wagoner, Washington
- 5 Brandie Combs**
Beckham, Caddo, Comanche, Cotton, Greer, Harmon, Jackson*, Kiowa, Tillman, Washita
- 6 Daryn Kirkpatrick**
Grady*, Hughes, McClain, Pottawatomie, Seminole
- 7 Tina Johnson (Interim)**
Adair, Cherokee, Haskell, McIntosh, Muskogee, Okfuskee, Okmulgee, Sequoyah*
- 8 Chris Munn (Interim)**
Carter*, Garvin, Jefferson, Johnston, Love, Marshall, Murray, Pontotoc, Stephens
- 9 Juli Montgomery**
Atoka, Bryan, Coal, Choctaw, Latimer, LeFlore, McCurtain, Pittsburg*, Pushmataha
- 10 Jackie Kanak**
Cleveland*

- Independent Counties**
Oklahoma City County Health Department
Tulsa County Health Department
- Counties without a local health department**
Alfalfa, Cimarron, Dewey, Ellis, Nowata, Roger Mills, Washita

★ Regional Director's Home Site
● County Health Department Site