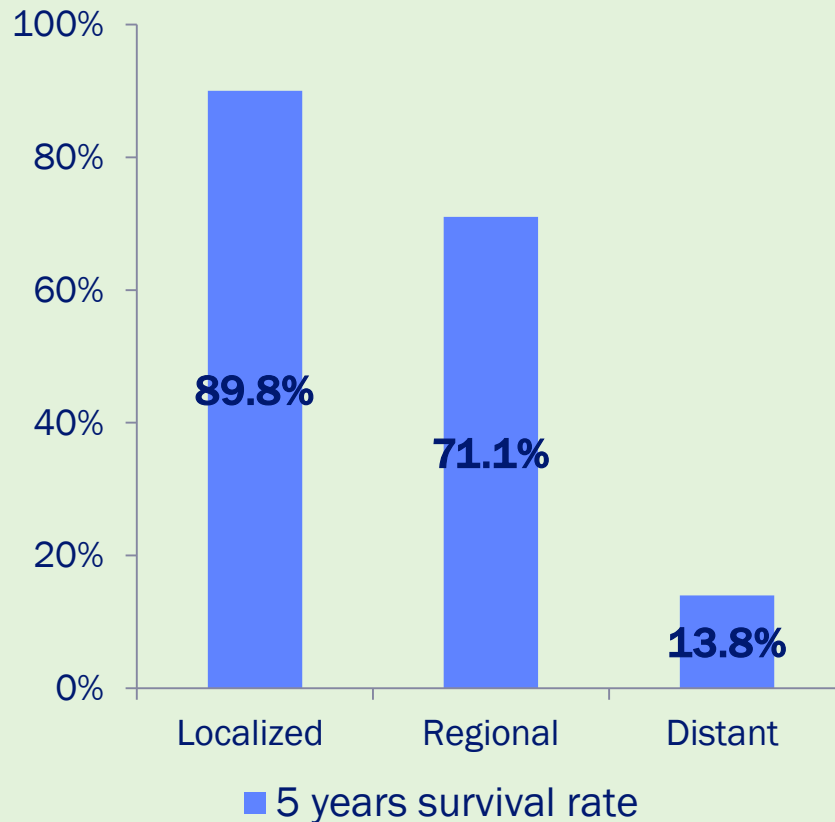


# Overview of Colorectal Cancer in Oklahoma

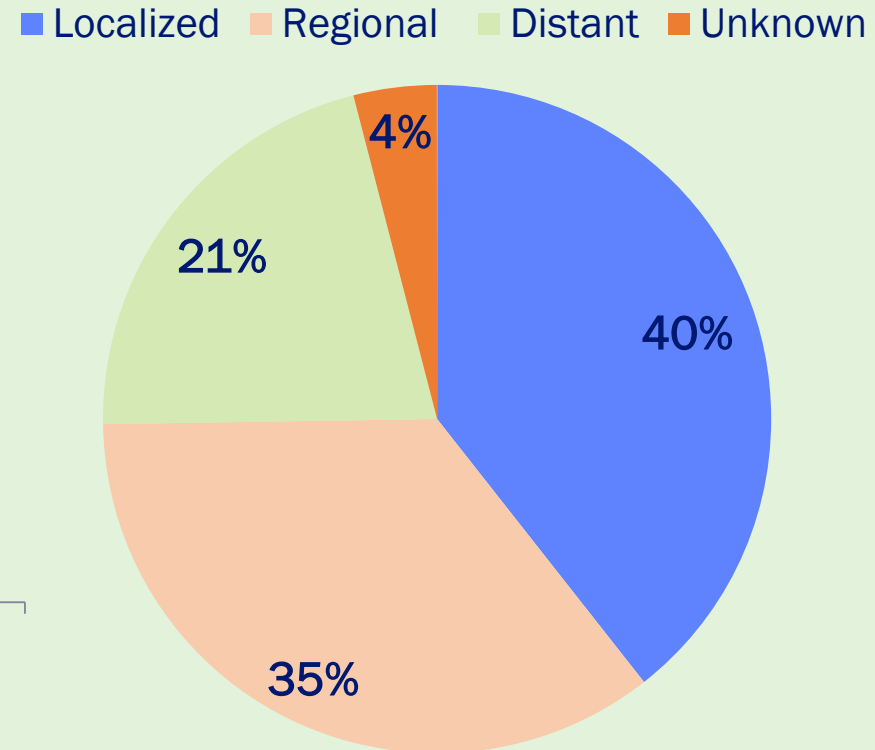
Raffaella Espinoza, MPH  
Analytics and Dissemination Manager  
Center for Health Statistics



# 5 Year Relative Survival Rate of Colorectal Cancer By Stage, United States



## Percent of Cases By Stage



Oklahoma  
State  
Department  
of Health

Surveillance, Epidemiology, and End Results (SEER) Program ([www.seer.cancer.gov](http://www.seer.cancer.gov)) Research Data (1973-2014), National Cancer Institute, DCCPS, Surveillance Research Program, released April 2017, based on the November 2016 submission.

## US Preventive Service Task Force, CRC screening recommendation, 2016

Population	Recommendation	Grade
Age 50-75	The USPSTF recommends screening for colorectal cancer starting at age 50 years and continuing until age 75 years.	A
Age 76-85	The decision to screen for colorectal cancer in adults aged 76 to 85 years should be an individual one, taking into account the patient's overall health and prior screening history	C



Oklahoma  
State  
Department  
of Health

# Colorectal Cancer in the United States and Oklahoma

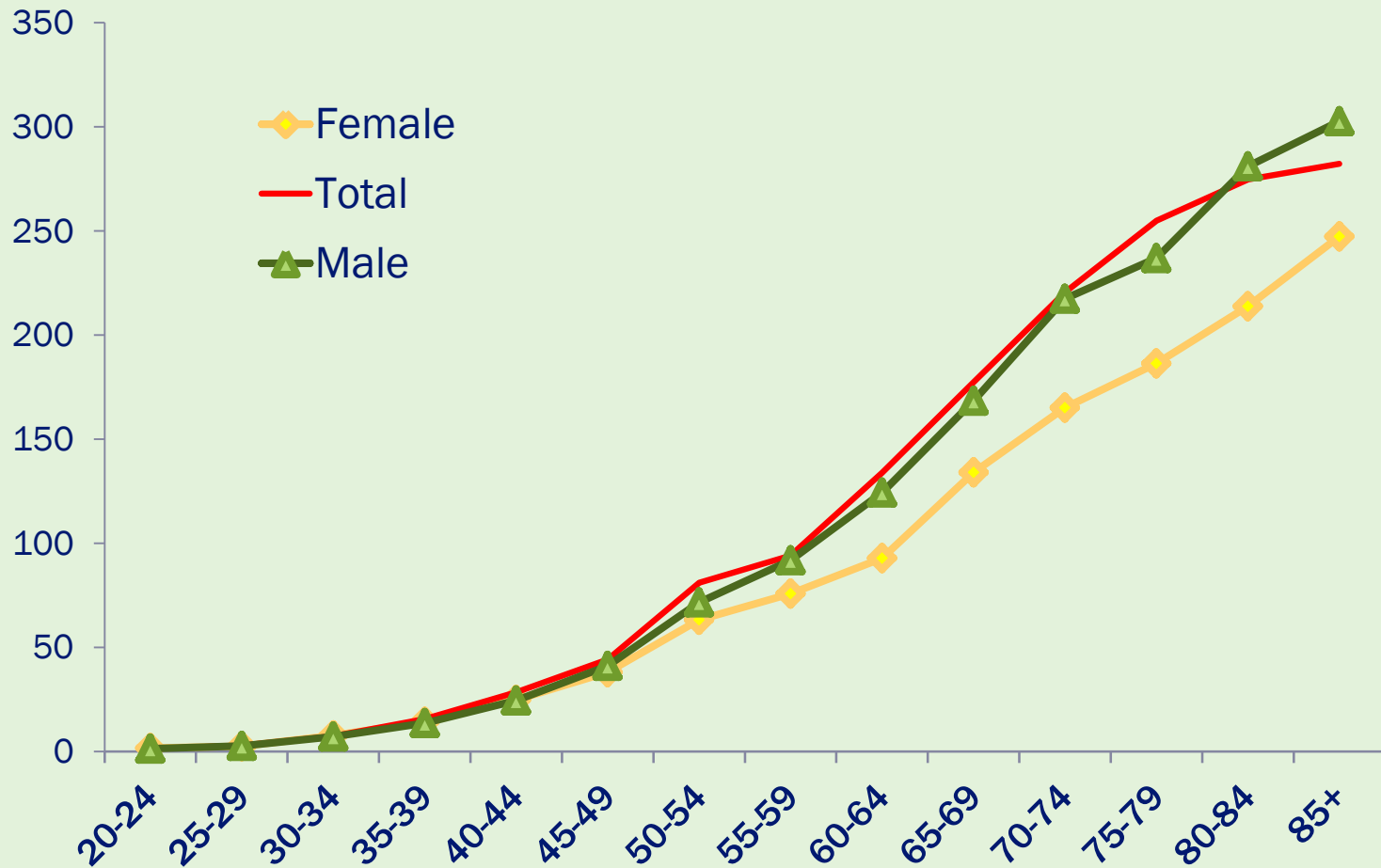
	Number of Colorectal Cancer Diagnoses 2015	Age Adjusted Incidence Rate *100,000 population (95% CI)	Number of Colorectal Cancer Deaths 2017	Age Adjusted Mortality Rate *100,000 population (95% CI)
<b>U.S.</b>	<b>140,788</b>	<b>38.0 (37.8-38.2)</b>	<b>52,278</b>	<b>13.4 (13.3-13.5)</b>
<b>Oklahoma</b>	<b>1,798</b>	<b>40.8 (38.9-42.7)</b>	<b>759</b>	<b>16.7 (15.5-17.9)</b>



Oklahoma  
State  
Department  
of Health

United States Cancer Statistics: 1999 - 2014 Mortality, WONDER Online Database. United States Department of Health and Human Services, Centers for Disease Control and Prevention; 2016. Accessed at <http://wonder.cdc.gov>

# Age-specific Colorectal Cancer Incidence Rate per 100,000- Oklahoma, 2012-2016

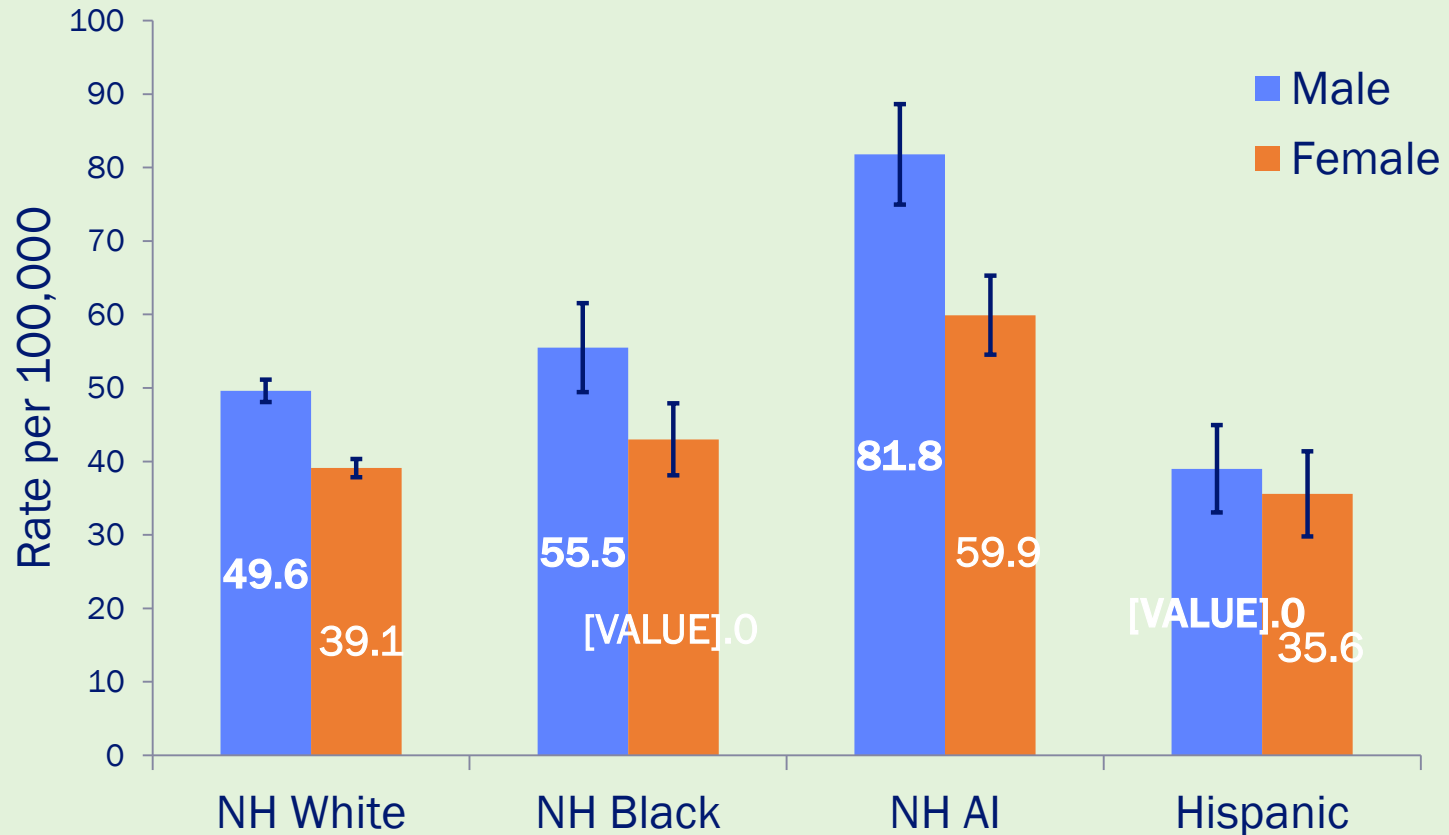


Age-specific rates for ages 0-19 suppressed due to small number of cases

Data source: Oklahoma State Department of Health (OSDH), Data, Public Policy & Promotion, Center for Health Statistics, Oklahoma Central Cancer Registry (OCCR) 2012 to 2016



# Age-Adjusted Incidence Rate of Colorectal Cancer by IHS linked\* Race/Ethnicity and Gender, Oklahoma, 2012-2016



\*To reduce misclassification, of American Indian, records are linked with IHS (Indian Health Services) patient registration files

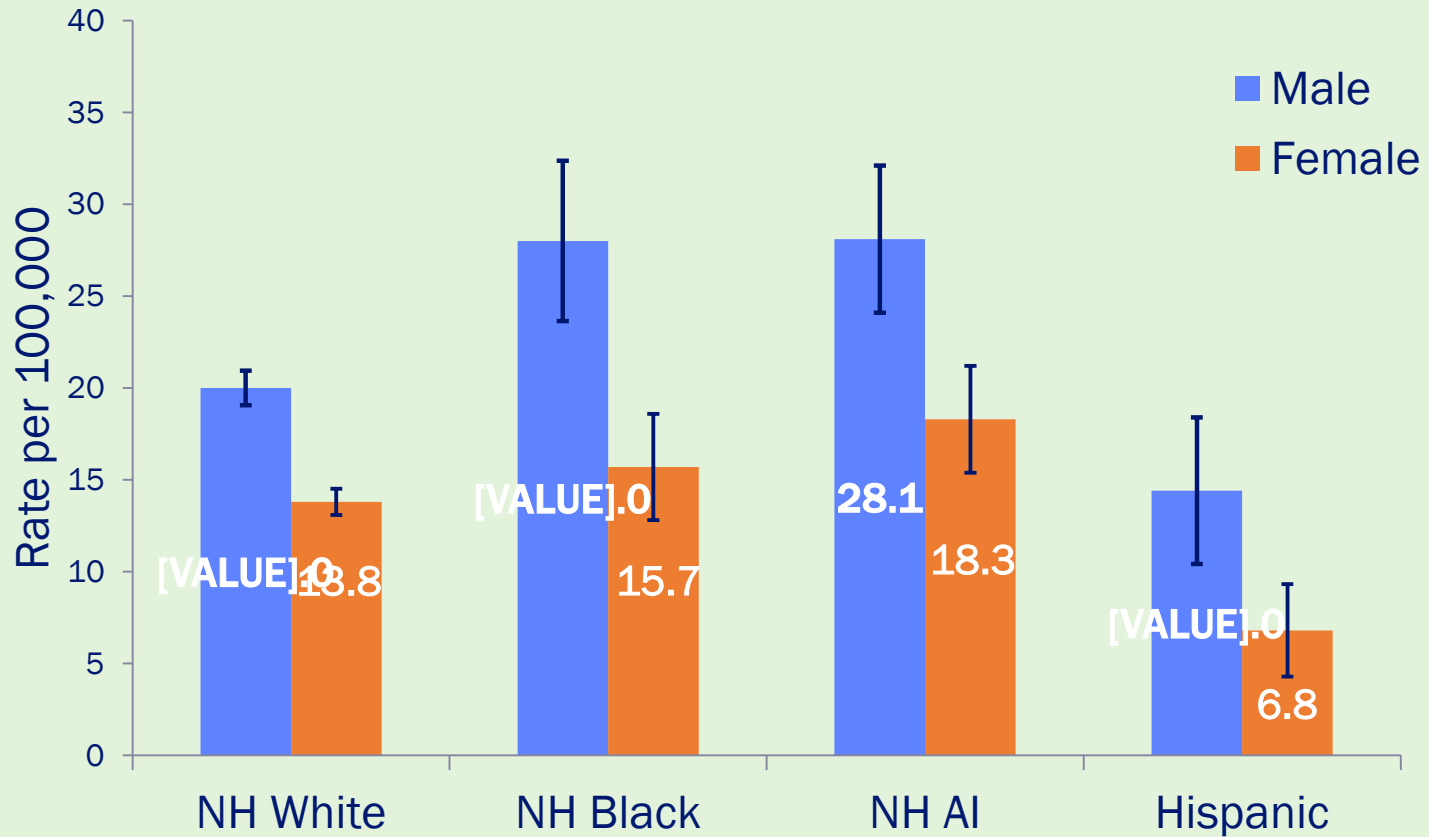
NH- Non Hispanic  
AI- American Indian

Data source: Oklahoma State Department of Health (OSDH), Data, Public Policy & Promotion, Center for Health Statistics, Oklahoma Central Cancer Registry (OCCR) 2012 to 2016



Oklahoma  
State  
Department  
of Health

# Age-Adjusted Mortality Rate of Colorectal Cancer by Race/Ethnicity and Gender, Oklahoma, 2013-2017



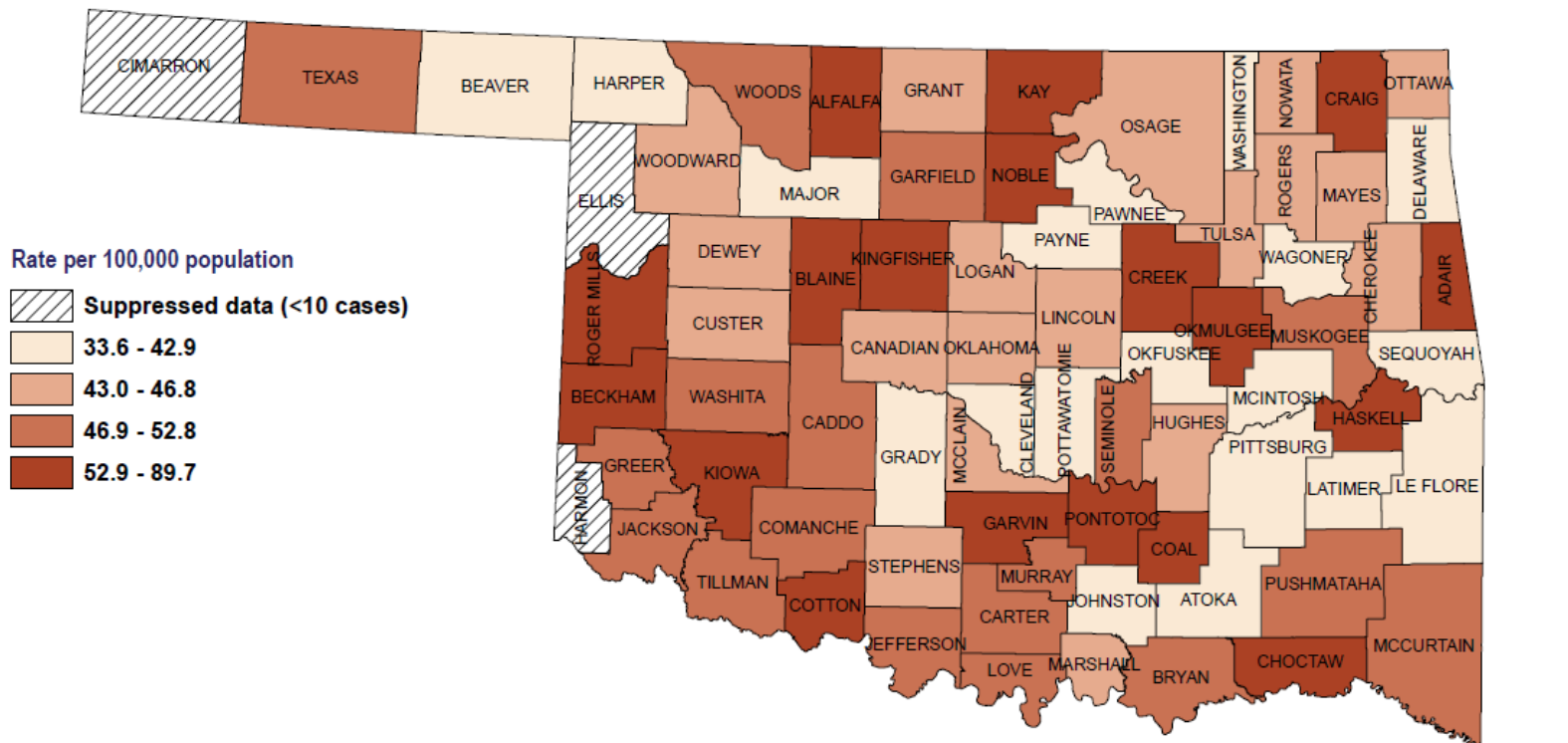
NH- Non Hispanic  
AI- American Indian

Data source: Oklahoma State Department of Health (OSDH), Center for Health Statistics, Health Care Information, Vital Statistics 2013 to 2017, on Oklahoma Statistics on Health Available for Everyone (OK2SHARE). Accessed at <http://www.health.ok.gov/ok2share>

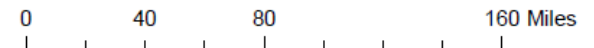


Oklahoma  
State  
Department  
of Health

# Age-Adjusted Incidence Rate of Colorectal Cancer by County of Residence, Oklahoma, 2012-2016



Data Source: Oklahoma Central Cancer Registry, 2012-2016



Created: 03.2019

Projection/Coordinate System: USGS Albers Equal Area Conic

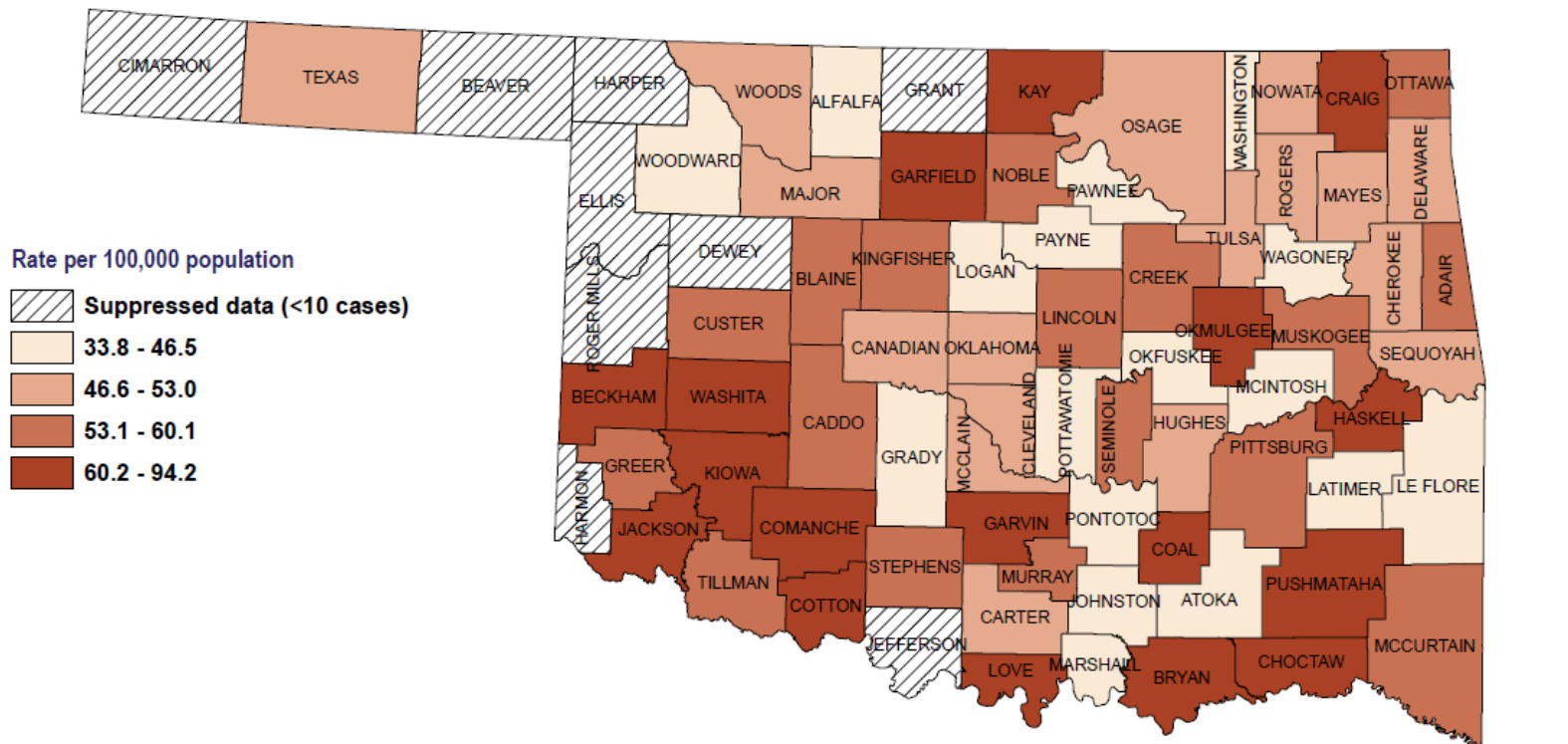


Disclaimer: This map is a compilation of records, information and data from various city, county and state offices and other sources, affecting the area shown, and is the best representation of the data available at the time. The map and data are to be used for reference purposes only. The user acknowledges and accepts all inherent limitations of the map, including the fact that the data are dynamic and in a constant state of maintenance.





# Age-Adjusted Incidence Rate of Colorectal Cancer among Men by County of Residence, Oklahoma, 2012-2016



Data Source: Oklahoma Central Cancer Registry, 2012-2016



Created: 03.2019

Projection/Coordinate System: USGS Albers Equal Area Conic

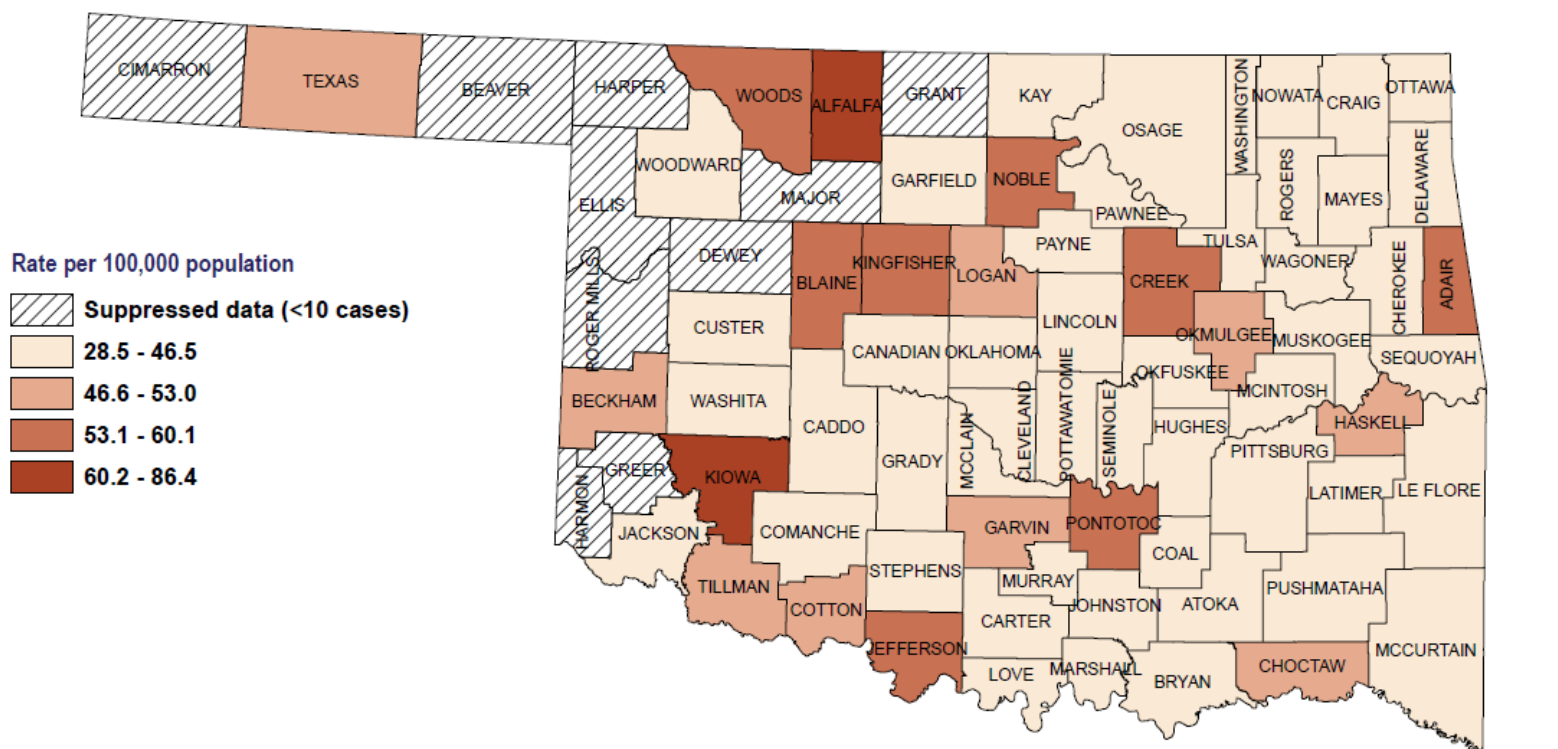


Disclaimer: This map is a compilation of records, information and data from various city, county and state offices and other sources, affecting the area shown, and is the best representation of the data available at the time. The map and data are to be used for reference purposes only. The user acknowledges and accepts all inherent limitations of the map, including the fact that the data are dynamic and in a constant state of maintenance.

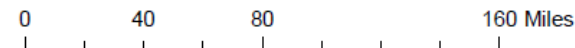


Oklahoma  
State  
Department  
of Health

# Age-Adjusted Incidence Rate of Colorectal Cancer among Women by County of Residence, Oklahoma, 2012-2016



Data Source: Oklahoma Central Cancer Registry, 2012-2016



Created: 03.2019

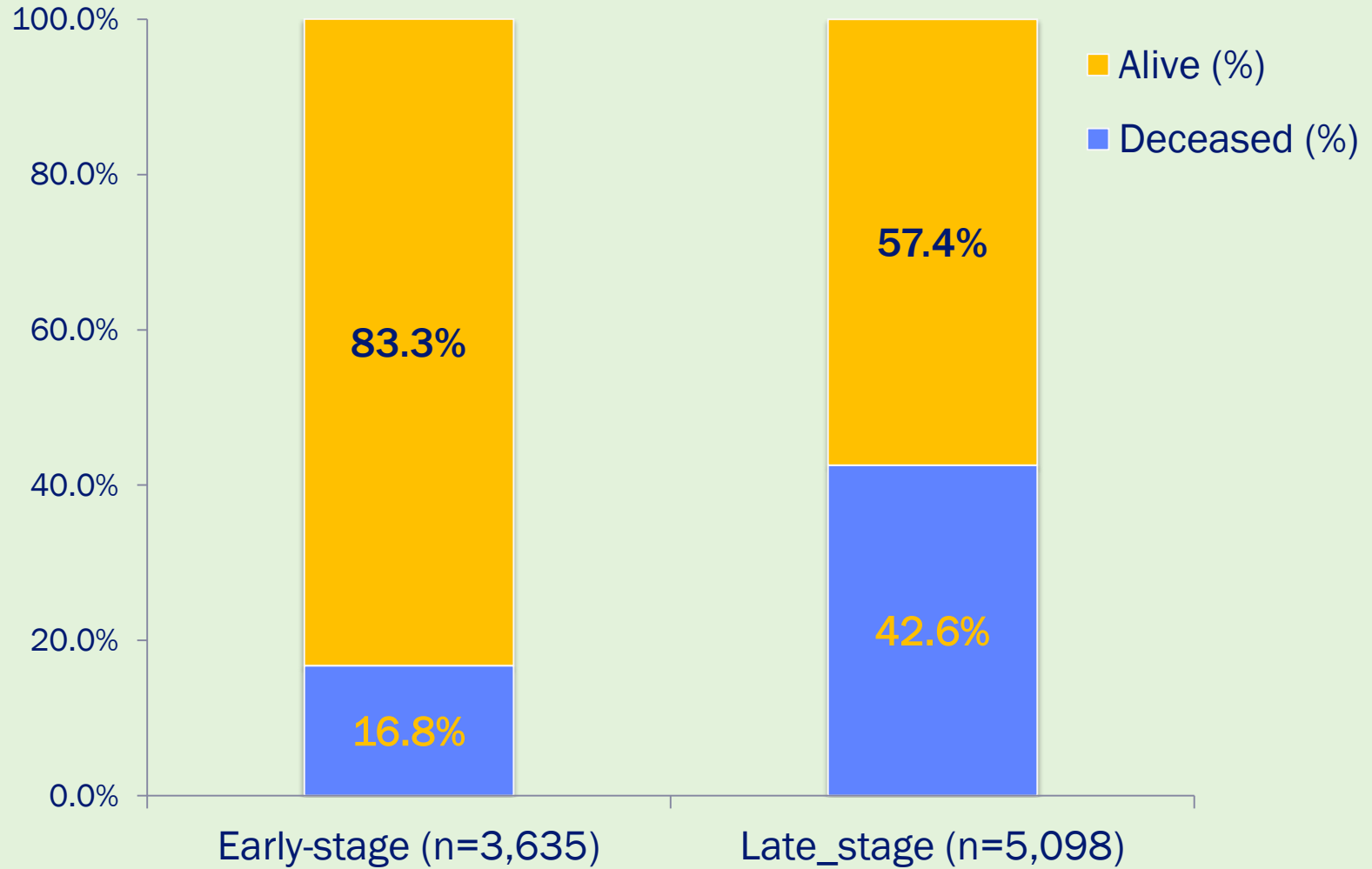
Projection/Coordinate System: USGS Albers Equal Area Conic



Disclaimer: This map is a compilation of records, information and data from various city, county and state offices and other sources, affecting the area shown, and is the best representation of the data available at the time. The map and data are to be used for reference purposes only. The user acknowledges and accepts all inherent limitations of the map, including the fact that the data are dynamic and in a constant state of maintenance.



# Vital Status\* by Stage of Cancer Oklahoma, 2012-2016



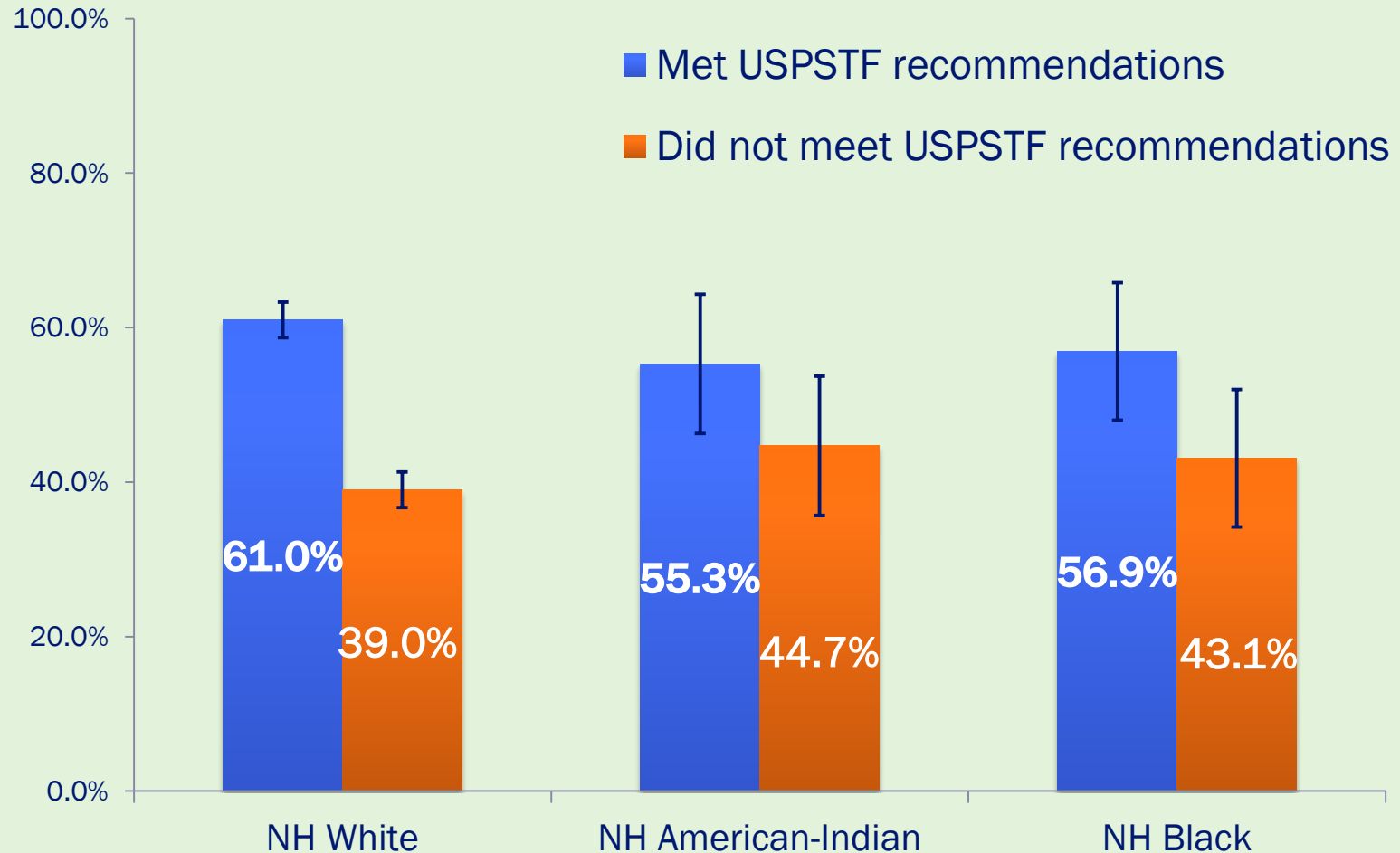
\*The Oklahoma Central Cancer Registry has conducted the National Death Index link with cancer diagnosed 1997-2015

Data source: Oklahoma State Department of Health (OSDH), Data, Public Policy & Promotion, Center for Health Statistics, Oklahoma Central Cancer Registry (OCCR) 2012 to 2016



Oklahoma  
State  
Department  
of Health

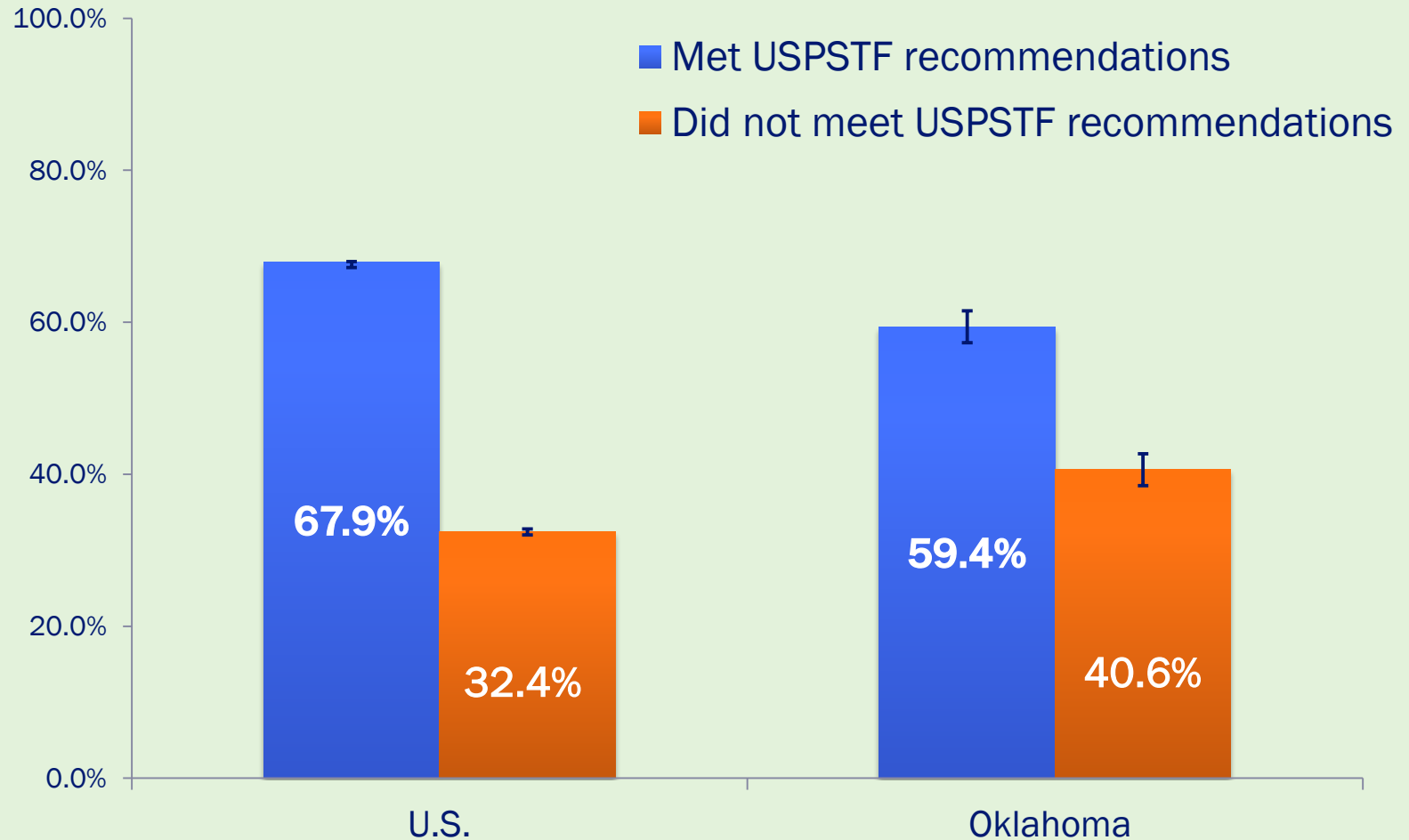
# Proportion of Adults aged 50-75 who have fully met the USPSTF recommendation, BRFSS, Oklahoma, 2011-2015



Centers for Disease Control and Prevention, National Center for Chronic Disease Prevention and Health Promotion, Division of Population Health. BRFSS Prevalence & Trends Data [online]. 2016.



# Proportion of Adults aged 50-75 who have fully met the USPSTF recommendation, US and Oklahoma, 2016

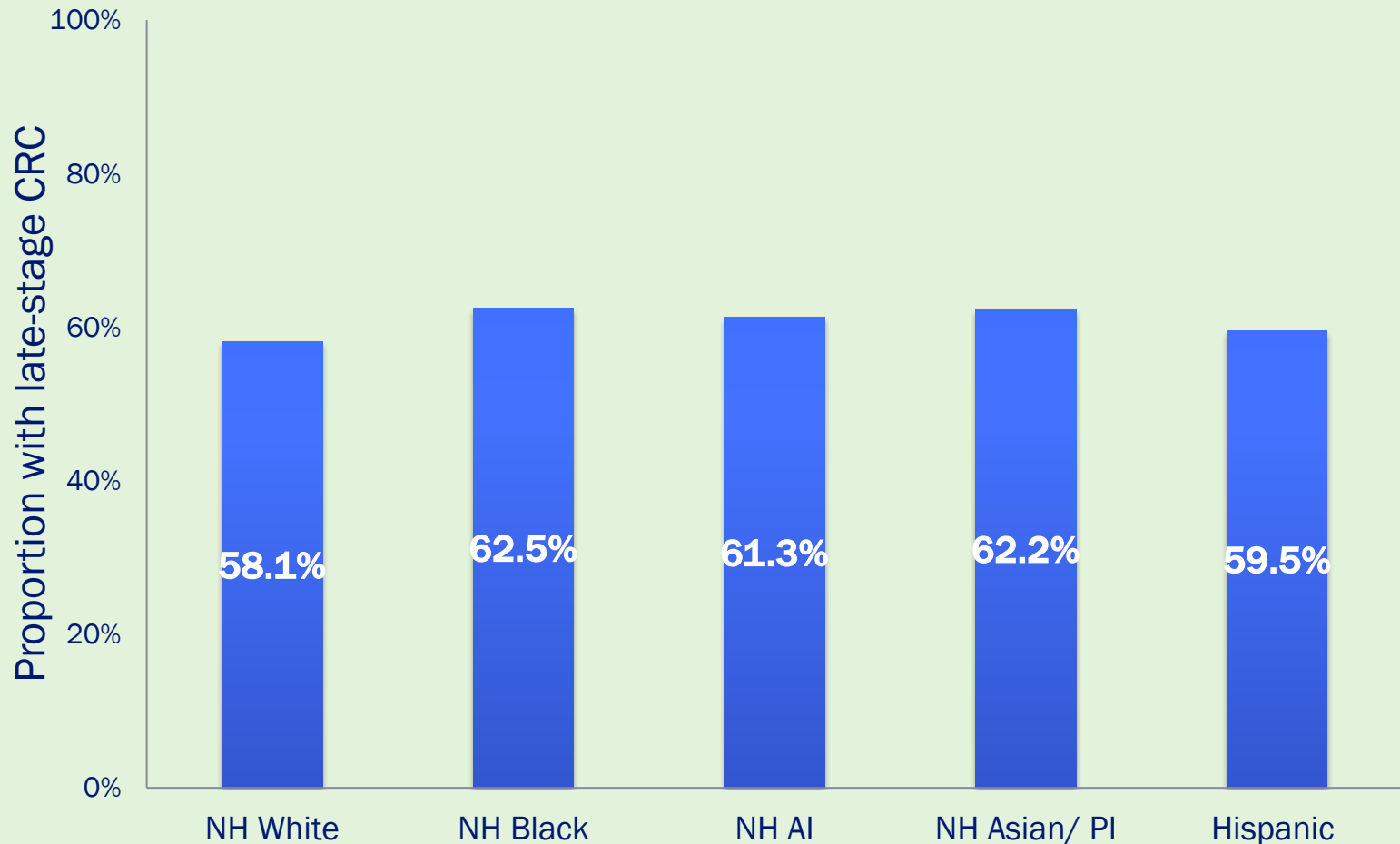


Centers for Disease Control and Prevention, National Center for Chronic Disease Prevention and Health Promotion, Division of Population Health. BRFSS Prevalence & Trends Data [online]. 2016.



Oklahoma  
State  
Department  
of Health

# Proportion of Late-stage Colorectal Cancer by IHS Linked Race\*, Oklahoma 2012-2016



\*To reduce misclassification, of American Indian, records are linked with IHS (Indian Health Services) patient registration files

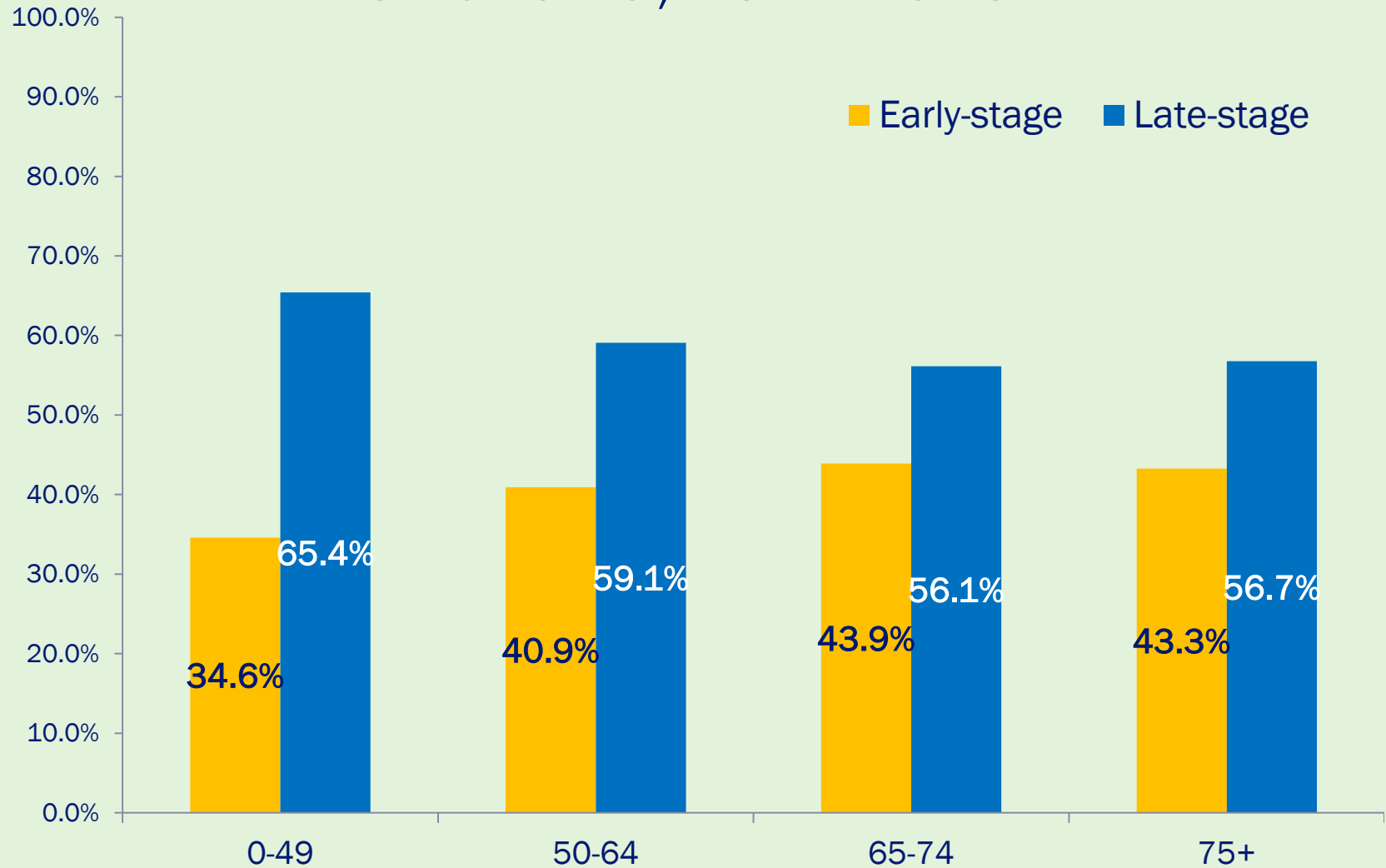
NH- Non Hispanic, AI- American Indian, PI- Pacific Islander

Data source: Oklahoma State Department of Health (OSDH), Data, Public Policy & Promotion, Center for Health Statistics, Oklahoma Central Cancer Registry (OCCR) 2012 to 2016



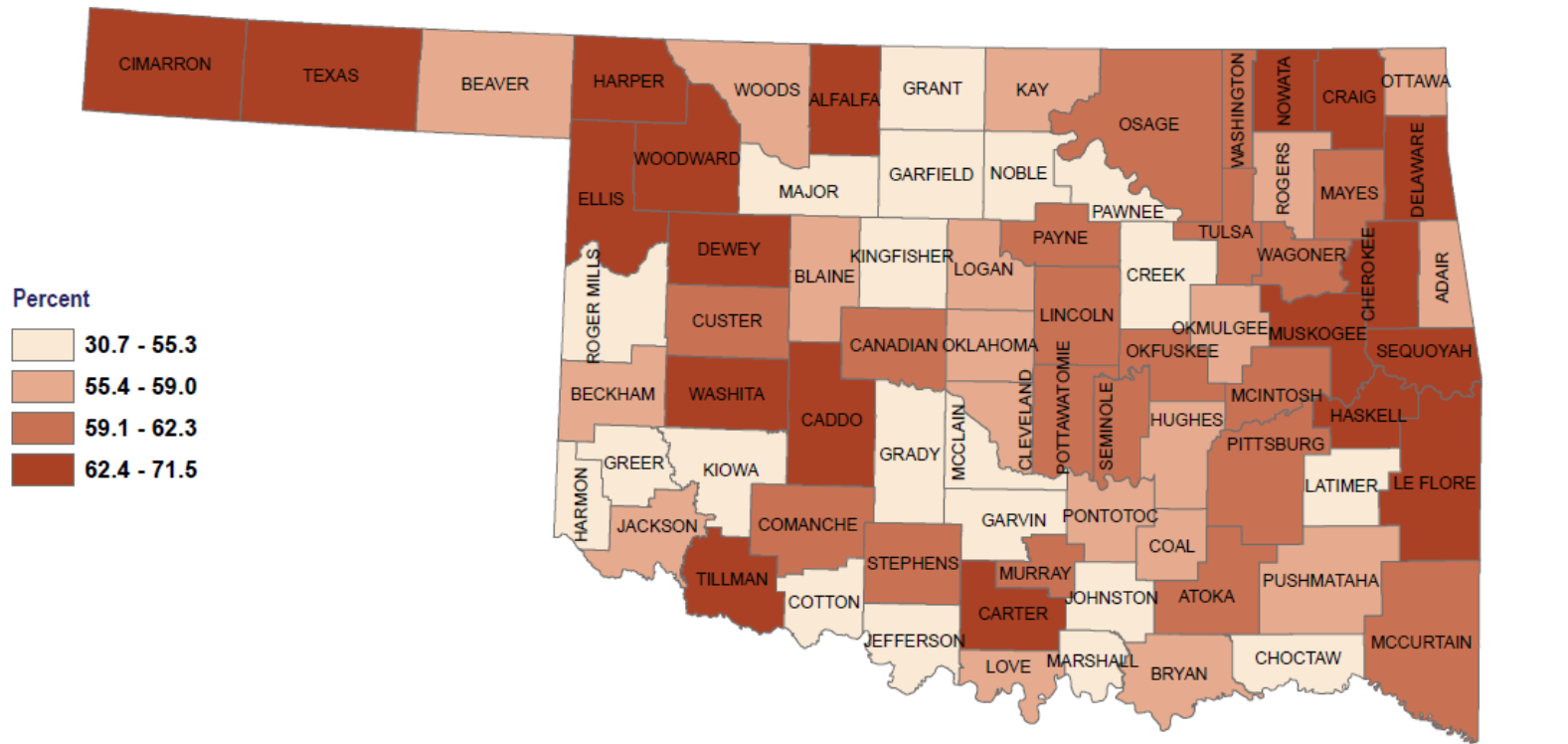
Oklahoma  
State  
Department  
of Health

# Colorectal Cancer Stage by Age Group, Oklahoma, 2012-2016



Oklahoma  
State  
Department  
of Health

# Percent of Colorectal Cancer Cases Diagnosed at Late Stage by County of Residence Oklahoma, 2012-2016



Data Source: Oklahoma Central Cancer Registry, 2012-2016



Created: 03.2019

Projection/Coordinate System: USGS Albers Equal Area Conic



Disclaimer: This map is a compilation of records, information and data from various city, county and state offices and other sources, affecting the area shown, and is the best representation of the data available at the time. The map and data are to be used for reference purposes only. The user acknowledges and accepts all inherent limitations of the map, including the fact that the data are dynamic and in a constant state of maintenance.



Center for  
Health Statistics  
Oklahoma State  
Department of Health



Oklahoma  
State  
Department  
of Health



# Questions



Oklahoma  
State  
Department  
of Health