

Marijuana

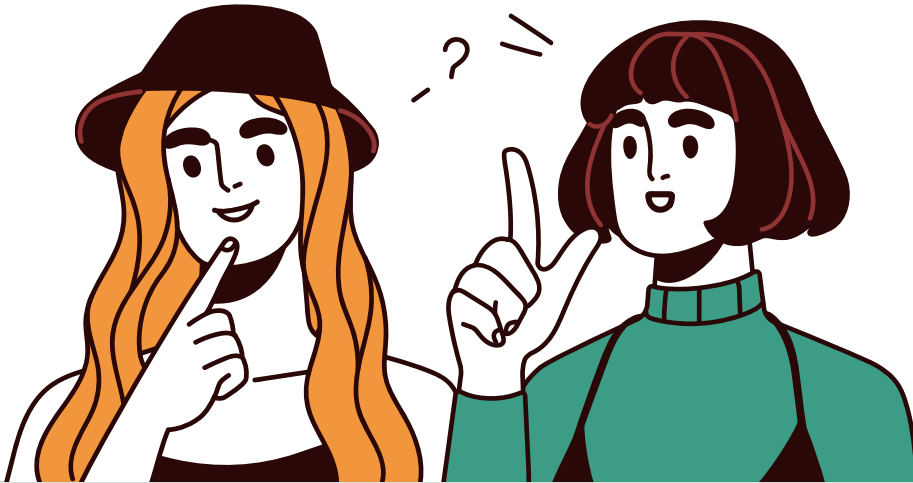
# DID YOU KNOW?

Among public high school students in Oklahoma...

YRBS  
Youth Risk Behavior Survey



OKLAHOMA  
State Department  
of Health



**65%**  
of your peers have  
**never used** marijuana.

**81%**  
did not use  
marijuana recently.

*(During the 30 days before the survey.)*



So don't believe the hype,  
**not everyone is doing it!**

This publication was supported by Cooperative Agreement Number, NU87PS004296, funded by the Centers for Disease Control and Prevention. Its contents are solely the responsibility of the authors and do not necessarily represent the official views of the Centers for Disease Control and Prevention or the Department of Health. The Oklahoma State Department of Health (OSDH) is an equal opportunity employer. Copies have not been printed but are available for download at <http://oklahoma.gov/health/yrbs>

For more information, contact the Maternal and Child Health Service, MCH Assessment at (405) 426-8092 or visit [oklahoma.gov/health/yrbs](http://oklahoma.gov/health/yrbs).