

Oklahoma Maternal and Child Health Data Review



Demographics

OK US

Population (total) ¹	3,956,971	328,239,523
Women ages 15-44 ¹	774,815	64,325,356
Birth rate ³	12.6	11.6 ⁵
Teen birth rate (15-19 years) ³	27.1	17.4 ⁵

Chronic Conditions

OK US

Diabetes ²	3.5	3.1 ⁷
High blood pressure ²	6.8	9.9 ⁷
Depression ²	16.4	12.8 ⁷
Asthma ²	11.7	NA
Anemia ²	13.5	NA
Thyroid ²	7.0	NA
PCOS ²	6.4	NA

Postpartum Health

OK US

Initiate breastfeeding ²	86.1	87.7 ⁶
Breastfeeding 8 weeks or more ²	57.8	67.7 ⁶
Infant back sleep position ²	77.9	79.5 ⁶
Infant bed-sharing ²	44.1	44.3 ⁶
Postpartum birth control use ²	79.6	77.0 ⁶
Postpartum depression ²	15.2	12.5 ⁶

Major Causes of Infant Deaths⁴

- Congenital malformation
- Preterm and low birth weight
- Sudden infant death syndrome
- Newborn affected by maternal complications
- Accidents

Preconception

OK US

Smoking in 3 months prior ²	23.4	17.7 ⁶
Alcohol use 3 months prior ²	52.0	56.5 ⁶
Multivitamin/Folic acid Use ²	41.9	40.4 ⁶
Maternal obesity ²	31.8	25.3 ⁶

Pregnancy Health

OK US

Prenatal care in 1st trimester ³	70.4	75.5 ⁵
Pregnancy intention ²		
Intended	52.9	59.2 ⁶
Not sure	18.3	15.5 ⁶
Percent of mothers on Medicaid ²	57.5	35.6 ⁶

Birth Outcomes

OK US

Infant mortality rate (IMR) ⁴	7.4	5.7 ⁵
Preterm rate ³	11.4	10.0 ⁵
Low birth weight ³	8.3	8.3 ⁵
Maternal mortality ratio ⁵	24.9	20.7 ⁵

Quick Facts

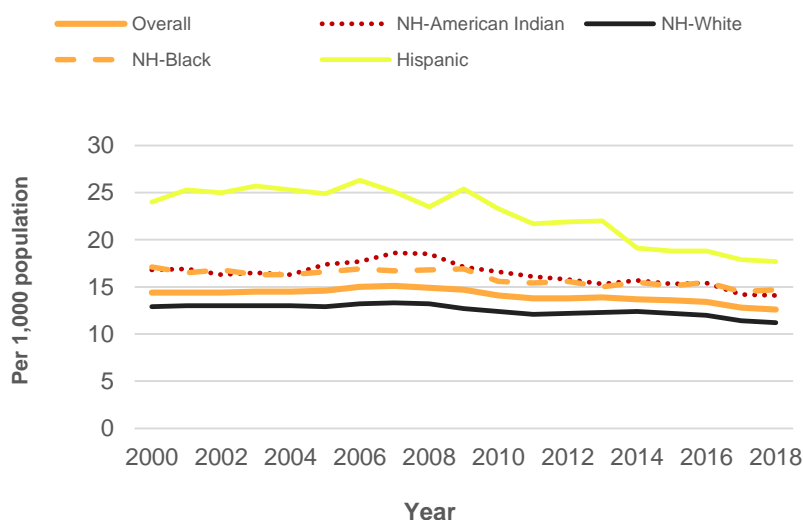
	Better	Worse
Infant mortality rate		7.4
Smoking		23.4
Maternal mortality		24.9
Birth control use	79.6	
Teen birth rate		27.1
Obesity		31.8
Multivitamin use	41.9	

Oklahoma Maternal and Child Health Data Review



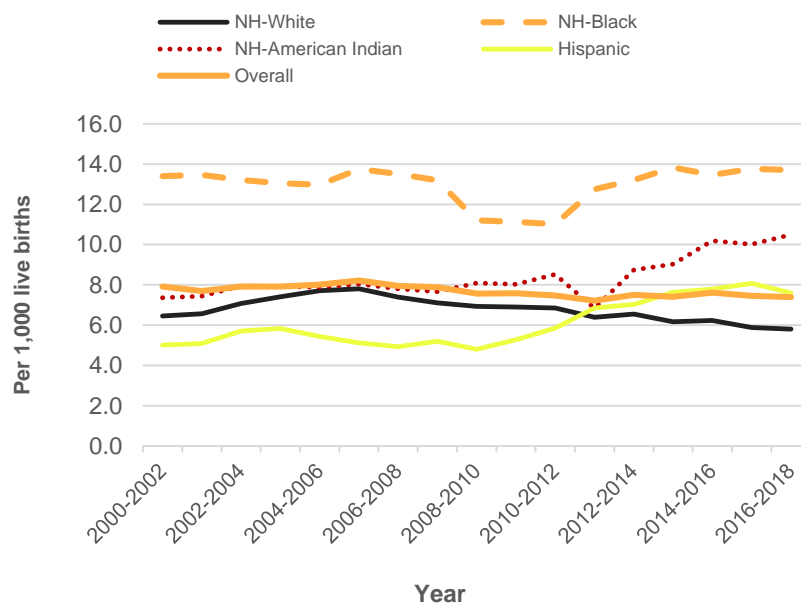
Crude Birth Rates by Race & Hispanic Origin, Oklahoma 2000 - 2018

Year	NH-American Indian	NH-White	NH-Black	Hispanic	Overall
2000	16.8	12.9	17.1	24.0	14.4
2001	16.9	13.0	16.5	25.3	14.4
2002	16.3	13.0	16.8	25.0	14.4
2003	16.5	13.0	16.3	25.7	14.5
2004	16.3	13.0	16.3	25.3	14.5
2005	17.4	12.9	16.6	24.9	14.6
2006	17.7	13.2	16.9	26.3	15.0
2007	18.6	13.3	16.7	25.1	15.1
2008	18.5	13.2	16.8	23.5	14.9
2009	17.1	12.7	16.9	25.4	14.7
2010	16.6	12.4	15.6	23.3	14.1
2011	16.1	12.1	15.4	21.7	13.8
2012	15.8	12.2	15.6	21.9	13.8
2013	15.3	12.3	15.0	22.0	13.9
2014	15.7	12.4	15.5	19.1	13.7
2015	15.3	12.2	15.1	18.8	13.6
2016	15.4	12.0	15.5	18.8	13.4
2017	14.2	11.4	14.5	17.9	12.8
2018	14.1	11.2	14.7	17.7	12.6



Infant Mortality by Race & Hispanic Origin, Oklahoma 2000 - 2018

Year of Death	NH-White	NH-Black	NH-American Indian	Hispanic	Overall
2000-2002	6.5	13.4	7.4	5.0	7.9
2001-2003	6.6	13.5	7.4	5.1	7.7
2002-2004	7.1	13.2	7.9	5.7	7.9
2003-2005	7.4	13.0	7.9	5.8	7.9
2004-2006	7.7	13.0	7.9	5.4	8.0
2005-2007	7.8	13.7	8.0	5.1	8.2
2006-2008	7.4	13.5	7.8	4.9	7.9
2007-2009	7.1	13.2	7.7	5.2	7.9
2008-2010	6.9	11.2	8.1	4.8	7.6
2009-2011	6.9	11.1	8.0	5.3	7.6
2010-2012	6.8	11.0	8.5	5.9	7.5
2011-2013	6.4	12.7	6.8	6.9	7.2
2012-2014	6.6	13.2	8.7	7.0	7.5
2013-2015	6.2	13.8	9.0	7.6	7.4
2014-2016	6.2	13.5	10.2	7.8	7.6
2015-2017	5.9	13.8	10.0	8.1	7.5
2016-2018	5.8	13.7	10.5	7.6	7.4



Technical Notes

Maternal Overweight/Obesity — Pre-pregnancy Body Mass Index (BMI) of 25.0 or greater.

Infant Mortality Rate — Number of deaths before day 365/1,000 live births.

Birth rate—Number of Resident Live Births/1,000 Female Resident Population.

Preterm Birth—Percentage of all live births less than 37 completed weeks gestation but more than 19 weeks.

Unintended Pregnancy—Percentage of women with live births who indicated they wanted to be pregnant later or not at all when they became pregnant.

Low Birth Weight—Birth weight less than 2,500 grams.

Postpartum Depression — Mothers reporting yes to sometimes or to always being depressed, hopeless or having little interest or pleasure in doing things.

Moving averages removes fluctuations in rates for multiple years.

PCOS – Polycystic ovarian syndrome.

Data Sources

1. Population estimates 2019, U.S. Census Bureau, Population Division.
2. PRAMS 2016-2018, Maternal and Child Health Service, Oklahoma State Department of Health (OSDH).
3. Oklahoma Vital Statistics - Births 2018, Health Care Information, OSDH.
4. Oklahoma Vital Statistics Infant Deaths 2016-2018, Health Care Information, OSDH.
5. US Birth and Death Estimates, CDC Wonder. <http://wonder.cdc.gov/>. July 2020.
6. US PRAMS Estimates, Selected 2016 through 2017 Maternal and Child Health (MCH) Indicators. <https://www.cdc.gov/prams/prams-data/mch-indicators.html>
7. Disparities in Preconception Health Indicators - Behavioral Risk Factor Surveillance System, 2013-2015. <https://www.cdc.gov/mmwr/volumes/67/ss/ss6701a1.htm>