



# **Oklahoma Board of Corrections**

## **REGULAR MEETING**

June 30, 2026  
John Lilley Correctional Center  
407971 Highway 62E,  
Boley, Oklahoma

**OKLAHOMA BOARD OF CORRECTIONS**  
**REGULAR MEETING AGENDA**  
 JOHN LILLEY CORRECTIONAL CENTER  
 407971 Highway 62E, Boley, OK  
 1:00 PM on June 30, 2026

<b>ITEM</b>	<b>PRESENTER</b>
1. Call to Order A. Pledge of Allegiance B. Roll Call	Stephan Moore, Chair
2. Approval of Board of Corrections Regular Meeting Minutes A. May 27, 2026*	Stephan Moore, Chair
3. Chairman’s Update	Stephan Moore, Chair
4. Director’s Update	Justin Farris, Director
5. Warden’s Update	Terry Tuggle, Warden
6. Inmate Games Spotlight	Nicole Flemming, Chief of Offender Advocacy
7. Agency Budget Update A. FY26 DOC Monthly Budget Report B. FY27 Budget Work Program*	Ashlee Clemmons, Chief Financial Officer
8. Inmate/Offender Population A. Population Analysis Report	Jason Bryant, Deputy Chief of Operations
9. Committee Reports – Standing Committees A. Executive – Chair Stephan Moore, Vice-Chair Daniel Snead, Secretary Joseph Brantley and Past President Hastings Siegfried B. Public Policy/Affairs/Criminal Justice – Chair Rhonda Bear and Members Jake Parsons and Matt White C. Population/Security/Private Prison –Chair Hastings Siegfried and Members Joseph Brantley, Randy Chandler and Daniel Snead D. Audit/Finance– Chair Joseph Brantley, Members Stephan Moore, Hastings Siegfried and Roger Thompson	Committee Chairs
10. New Business	Stephan Moore, Chair
11. Election of Officers* A. Chair B. Vice Chair C. Secretary	All Members

12. Adjournment\*

Stephan Moore,  
Chair

*The next regular meeting of the Board of Corrections will be held at 1:00 PM on Wednesday, July 22, 2026,  
at Dick Conner Correctional Center.*

*\*Board of Corrections Voting Item  
Updated on 6/26/2026 1:58:18 PM*

**OKLAHOMA BOARD OF CORRECTIONS**  
**REGULAR MEETING MINUTES**  
**May 27, 2026**

**1. Call to Order**

Chairman Stephan Moore called the meeting of the Oklahoma Board of Corrections (BOC) to order at 1:00 p.m., on Wednesday, May 27, 2026, at Jess Dunn Correctional Center, 601 S. 124<sup>th</sup> Street, Taft, OK.

The meeting was preceded by advance notice of the date, time, and place, filed with the Oklahoma Secretary of State on Wednesday, November 26, 2025. An announcement was also given at least twenty-four (24) hours in advance by posting notice of the date, time, place, and agenda of the meeting at 11:45 a.m. on Tuesday, May 26, 2026, at the principal office of the Oklahoma Department of Corrections (ODOC), located at 4345 N. Lincoln Blvd, Oklahoma City, OK 73105.

**A. Pledge of Allegiance**

Chairman Moore led the meeting attendees in reciting the pledge of allegiance to the United States Flag.

**B. Roll Call**

Chairman Moore asked the clerk to call roll:

Rhonda Bear	Present		T. Hastings Siegfried	Present
Joseph Brantley	Present		Daniel Snead	Present
Randy Chandler	Present		Roger Thompson	Present
Stephan Moore	Present		Matthew White	Present
Jake Parsons	Absent			

The roll reflected a quorum.

**2. Approval of Board of Corrections Meeting Minutes**

**A. March 23, 2026 Minutes**

Chairman Moore requested approval of the meeting minutes as presented to members in the BOC packet for May 27, 2026.

**Motion:** Mr. White made the motion to approve the minutes. Mr. Snead seconded the motion.

Rhonda Bear	Approved		T. Hastings Siegfried	Approved
Joseph Brantley	Approved		Daniel Snead	Approved
Randy Chandler	Approved		Roger Thompson	Abstained
Stephan Moore	Approved		Matthew White	Approved
Jake Parsons	Absent			

The meeting minutes of March 23, 2026, were approved by majority vote.

**3. Chairman's Update**

Chairman Moore welcomed everyone to the Board of Corrections meeting and thanked the Eddie Warrior Correctional Center and Jess Dunn wardens and staff for the tours and for hosting the meeting.

#### 4. Director's Update

Director Justin Farris gave an update on various projects including the award and beginning implementation of the food service contract, academy updates and appreciated the board for their individual experiences and their commitment to the agency.

#### 5. Warden's Welcome

Warden Joshua Cultrera welcomed the board members and ODOC staff. Jess Dunn Correctional Center (JDCC) is a minimum-security facility houses more than 1,100 male inmates. JDCC covers approximately 1,100 acres and includes five dormitories and a farm. In 2000, the state built a 42-bed segregated housing unit using inmate labor. A copy of the Jess Dunn Correctional Center information sheet was included in the BOC packet for May 27, 2026.

#### 6. Public Relations Unit Spotlight

Chief of Public Relations Kay Thompson gave an overview of communication and public relations. The report included social media activity and Gov Delivery interaction increases. Mr. White expressed a need to work with the Public Policy, Affairs, Criminal Justice Committee to create a communication plan. A copy of the report was included in the BOC packet for May 27, 2026.

#### 7. Agency Budget Update

##### A. FY26 DOC Budget Report

Chief Financial Officer Ashlee Clemmons welcomed everyone and provided an update on the year-to-date financials as of April 30, 2026. The financial reports were included in the BOC packet for May 27, 2026.

#### 8. Legislative Initiatives

Legislative Liaison Lizzie Smith gave an update on current legislative initiatives for the FY26 spring legislative session. A copy of the report was included in the BOC packet for May 27, 2026.

#### 9. Inmate/Offender Population Update

##### A. Inmate/Offender Population Report

Chief of Population Jason Bryant provided an overview of the inmate/offender population as of April 30, 2026. A copy of the overview was included in the BOC packet for May 27, 2026.

#### 10. Warden Appointments

##### A. Kelsey Fisher, Mabel Bassett Correctional Center

Chief of Operations Jason Sparks recommended approval of Kelsey Fisher as Warden of Mabel Bassett Correctional Center.

**Motion:** Mr. Siegfried made a motion to appoint Kelsey Fisher as warden of Mabel Bassett Correctional center and Mr. Snead seconded the motion.

Rhonda Bear

Approved | T. Hastings Siegfried

Approved

Joseph Brantley	Approved	Daniel Snead	Approved
Randy Chandler	Approved	Roger Thompson	Approved
Stephan Moore	Approved	Matthew White	Approved
Jake Parsons	Absent		

The motion to appoint Kelsey Fisher as warden of Mabel Bassett Correctional Center was approved by a majority vote.

**B. Willis Pettit, Oklahoma State Penitentiary/Jackie Brannon Correctional Center**

Chief of Operations Jason Sparks recommended approval of Willis Pettit as Warden of Oklahoma State Penitentiary/Jackie Brannon Correctional Center.

**Motion:** Mr. Siegfried made a motion to appoint Willis Pettit as Warden of Oklahoma State Penitentiary/Jackie Brannon Correctional Center Mr. White seconded the motion.

Rhonda Bear	Approved	T. Hastings Siegfried	Approved
Joseph Brantley	Approved	Daniel Snead	Approved
Randy Chandler	Approved	Roger Thompson	Approved
Stephan Moore	Approved	Matthew White	Approved
Jake Parsons	Absent		

The motion to appoint Willis Pettit as Warden of Oklahoma State Penitentiary/Jackie Brannon Correctional Center was approved by a majority vote.

**11. Policy Revisions**

**A. P-030100 – Provisions of Service/Inmate Rights and Responsibilities**

General Counsel Kari Hawkins reviewed the updates to P-030100. A copy of the updated policy with redline changes was included in the BOC packet for May 27, 2026.

**B. P-080100 – Mission and Management of Correctional Industries**

General Counsel Kari Hawkins reviewed the updates to P-080100. A copy of the updated policy with redline changes was included in the BOC packet for May 27, 2026.

**Motion:** Mr. White made the motion to approve the updates to P-030100 and P-080100. Mr. Siegfried seconded the motion.

Rhonda Bear	Approved	T. Hastings Siegfried	Approved
Joseph Brantley	Approved	Daniel Snead	Approved
Randy Chandler	Approved	Roger Thompson	Approved
Stephan Moore	Approved	Matthew White	Approved
Jake Parsons	Absent		

The policies P-030100 and P-080100 were approved by majority vote.

**12. Committee Reports – Standing Committees:**

**A. Executive**

**Chairman** Stephan Moore

**Members** Daniel Snead, Joseph Brantley and Hastings Siegfried

Members in this committee discussed the proposed BOC agenda and current litigation.

**B. Public Policy/Affairs/Criminal Justice**

**Chairman** Rhonda Bear

**Members** Jake Parsons and Matthew White

Members in this committee discussed the Public Relations initiatives, Community Outreach initiatives and Reentry programs including Birth Certificate and ID disbursements.

**C. Population/Security/Private Prisons**

**Chairman** Hastings Siegfried

**Members** Joseph Brantley, Randy Chandler and Daniel Snead

Members in this committee discussed population, Oklahoma Inspector General statistical updates, Office of Threats and Intelligence updates and Private Prison security and contract updates.

**D. Audit and Finance**

**Chairman** Joseph Brantley

**Members** Stephan Moore, Hastings Siegfried and Roger Thompson

Members in this committee discussed the monthly financials and the yearly budget work program.

**13. New Business**

No new business was discussed.

**14. Adjournment**

**Motion:** Mr. White made a motion to adjourn the meeting. Mr. Snead seconded the motion.

Rhonda Bear	Approved	T. Hastings Siegfried	Approved
Joseph Brantley	Approved	Daniel Snead	Approved
Randy Chandler	Approved	Roger Thompson	Approved
Stephan Moore	Approved	Matthew White	Approved
Jake Parsons	Absent		

There being no further business to discuss, the adjournment of the meeting was approved by a majority vote at 3:08 p.m.

Submitted to the Board of Corrections By:

\_\_\_\_\_  
Toni Lee, Minutes Clerk

\_\_\_\_\_  
Date

I hereby certify that these minutes were duly approved by the Board of Corrections on June 30, 2026, in which a quorum was present and voting.

\_\_\_\_\_

Joseph Brantley, Secretary  
Board of Corrections

# John H. Lilley Correctional Center



**John Lilley Correctional Center (JLCC)** is a minimum-security facility housing more than 800 male inmates on 256 acres one mile east of Boley on State Highway 62 in Okfuskee County. Located almost halfway between Oklahoma City and Tulsa, JLCC houses many of the state's elderly and physically-challenged inmates.



## Education



JLCC offers literacy courses, as well as Pre-High School Equivalency and High School Equivalency diplomas. College courses (not provided through state funding) are also available to inmates who can pay for them or those who have alternative funding or scholarships. The License Trades Program provides training for inmates working for ODOC's Maintenance Department.

## Substance Abuse Treatment



JLCC teaches inmates how to avoid drug and alcohol use, while also helping them develop cognitive, social, emotional, and coping skills needed to avoid using.

## Criminal Thinking



JLCC offers Thinking for a Change, Victims Impact, Associates 4 Success, Anger Management, Financial Literacy and Ideas for

Better Communication programs to address thinking, judgment errors and relationships linked with criminal thinking and behavior.

## CareerTech



JLCC's CareerTech is designed to train inmates on the skills and tools needed to obtain licenses that will increase their chances to succeed upon release.

The CareerTech Program will choose 2-3 trades the inmates can pursue while incarcerated.



## OCI

Oklahoma Correctional Industries offers customers quality products at a reasonable price, reduces offender idleness, and provides inmates job skills training. JLCC has a Mattress Factory which produces jail pads, pillows, mattresses and PREA curtains. The Chemical Factory produces a variety of chemicals which are provided to prisons across Oklahoma. JLCC's Welding Factory produces benches, fire rings and cattle panels.

JLCC was built in 1923 as a tuberculosis sanitarium for African-Americans. In 1925, it became the State Training School for Negro Boys (later the Boley State School for Boys). The state legislature closed the school in 1983 and gave it to ODOC, which converted it into a prison. JLCC is named for the school's first superintendent, John H. Lilley, whose dedication to and love for the school's children was widely known. Lilley died in 1933 after a car accident, and is buried next to the facility's entrance.



Oklahoma Department of Corrections  
4345 North Lincoln Blvd.  
Oklahoma City, OK 73111-4298  
(405) 425-2500 • oklahoma.gov/doc

John H. Lilley Correctional Center  
407971 Highway 62 East  
Boley, OK 74829  
(918) 667-3381

Published by the office of Public Relations  
August 2025

## 2026 Inaugural Inmate Games Overview

### Purpose

The Oklahoma Department of Corrections successfully launched the 2026 Inaugural Inmate Games, a statewide rehabilitation initiative designed to reinforce positive behavior, encourage healthy competition, promote teamwork, and support the agency's mission of "We Change Lives."

### Overview

- First statewide inmate games competition
- Conducted in three phases:
  - Local Facility Competitions
  - Regional Qualifying Events
    - Women's Facilities level from facility competitions to State Championship at Mabel Basset Correctional Center
  - Men's State Championship hosted at Great Plains Correctional Center
- Included both athletic and non-athletic competitions, providing opportunities for inmates with varying interests and abilities.

---

### Strategic Objectives

- ✓ Promote positive inmate behavior through incentive-based participation.

- ✓ Reinforce accountability and personal responsibility.
  - ✓ Encourage teamwork, leadership, and sportsmanship.
  - ✓ Improve institutional morale and positive culture.
  - ✓ Increase healthy physical activity and wellness.
- 

### **Agency Collaboration**

The event represented one of the largest coordinated rehabilitative initiatives conducted by ODOC and required collaboration among:

- Operations
- Facility Leadership
- Security/SRT
- Support Staff
- Programs Staff
- Medical Services
- Transportation
- Food Services
- Maintenance
- Volunteers
- Office of Offender Advocacy
- Public Relations
- Executive Planning Committees

---

## **Outcomes**

- Hundreds of inmates participated statewide after meeting established eligibility requirements.
- Events were completed safely through coordinated operational planning and security.
- Staff reported increased inmate motivation, positive peer interaction, and improved institutional morale throughout the competition period.
- Reinforced that positive behavior and accountability result in meaningful incentives.
- Demonstrated ODOC's commitment to rehabilitation while maintaining institutional safety and security.

---

## **Agency Impact**

The Inmate Games advanced the Department's strategic priorities by:

- Strengthening institutional culture.
- Promoting prosocial behavior.
- Encouraging healthy lifestyles.
- Building confidence and self-discipline.
- Demonstrating correctional professionalism and innovation.
- Highlighting ODOC's commitment to preparing inmates for successful reentry.

---

## **Looking Forward**

Based on the success of the inaugural year, the Inmate Games have established a strong foundation for future annual competitions. Lessons learned during 2026 will be incorporated into planning efforts to further enhance participation, operational efficiency, and rehabilitative outcomes.

---

## **Summary**

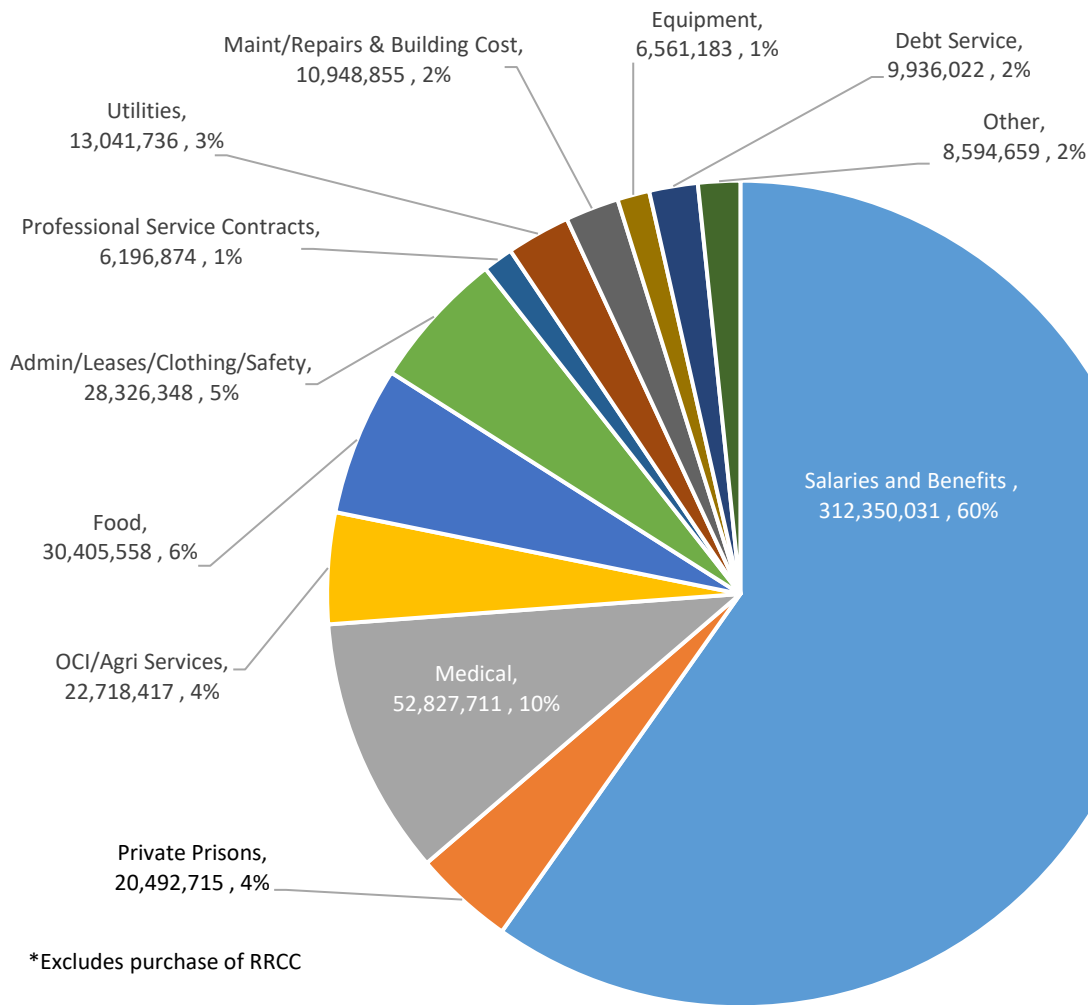
The 2026 Inaugural Inmate Games demonstrated that rehabilitation and security are complementary objectives. Through structured activities, collaboration, and positive incentives, ODOC successfully delivered a historic statewide initiative that strengthened institutional culture, promoted personal growth, and exemplified the Department's vision.



# BUDGET UPDATE

as of May 31, 2026

## EXPENDITURES



	Current Budget	Expenditures	Encumbrances	Available Balance
Salaries and Benefits	373,296,101	312,350,030.88	615,888	60,330,182
Contract Beds	63,983,975	20,492,714.99	40,929,271	2,561,989
Medical Services	57,900,000	50,926,254.29	7,023,152	(49,406)
Hep C Treatment	2,000,000	1,901,456.98	11,543	87,000
Institutions	85,211,599	70,688,700.71	13,419,211	1,103,686
Probation and Parole	1,540,629	1,224,324.08	314,723	1,582
Community Corrections	4,158,439	3,381,542.32	711,824	65,072
Inmate Programs	3,769,357	2,219,346.15	1,109,023	440,988
Community Sentencing	1,733,487	991,883.55	727,755	13,849
General Operations	18,401,601	16,433,116.32	1,239,668	728,817
Central Office Operations	2,362,428	1,542,703.71	542,861	276,863
Divisional Operations	8,469,596	4,206,665.60	3,814,738	448,192
IT	22,350,579	13,783,820.27	6,189,386	2,377,373
OCI / Agri-Services	28,454,599	22,404,784.12	5,456,260	593,555
<b>Total</b>	<b>673,632,390</b>	<b>522,547,343.97</b>	<b>82,105,303</b>	<b>68,979,742</b>
Purchase of RRCC	312,147,235	312,147,235.00		
<b>Grand Total</b>	<b>985,779,625</b>	<b>834,694,578.97</b>		

## STAFFING LEVELS

	Budget	March	April	May
CO's	1,795	1,406	1,409	1,420
PO's	271	250	249	246
Medical	473	406	408	405
Other	1,897	1,585	1,579	1,574
<b>Total Staff</b>	<b>4,435</b>	<b>3,647</b>	<b>3,645</b>	<b>3,645</b>

## STAFFING UPDATES

(in comparison to previous month)

**CO's ↑ 11 / 0.7%**

**PO's ↓ 3 / 1.2%**

**Medical ↓ 3 / 0.7%**

**Other ↓ 5 / 0.3%**

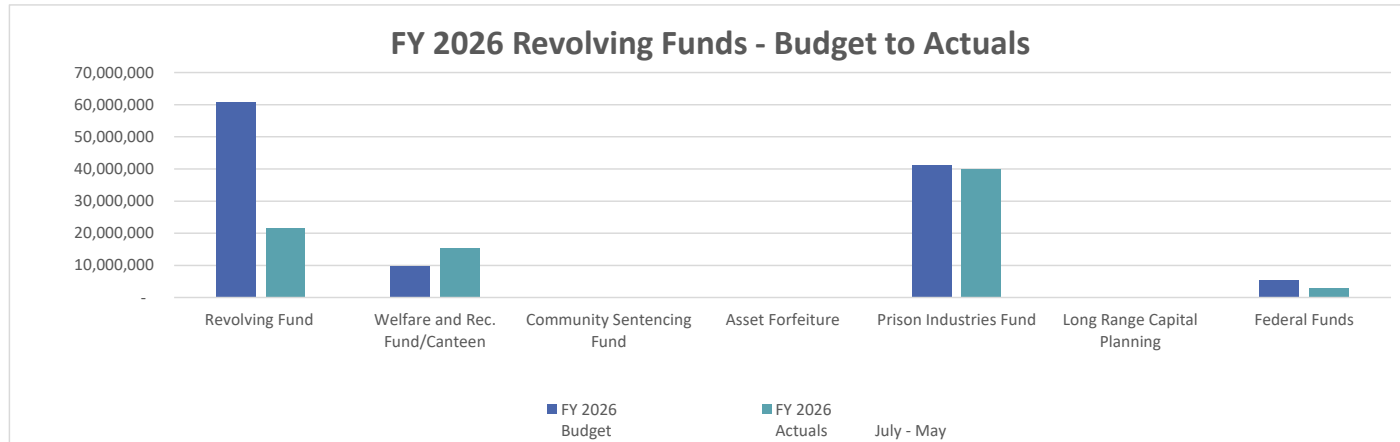
Fund Description	Budget	
19302/19601 Special - Appropriations	547,359,022	81%
19511 Carryover	8,729,629	1%
20000 Agency Revolving Funds	60,745,811	9%
20500 Inmate Welfare & Rec Funds	9,812,069	1%
21000 Community Sentencing	237,500	0%
23000 Equitable Sharing Funds	139,900	0%
28000 Prison Industries	41,299,406	6%
410 & 430 Federal Funds	5,309,052	1%
<b>Total</b>	<b>673,632,389</b>	
22100 Prison Acquisition Appropriations	312,000,000	
<b>Grand Total</b>	<b>985,632,389</b>	

## Three Year Expenditure Comparison

	FY 26 July - May	% Change from FY 25	FY 25 July - May	% Change from FY 24	FY 24 July - May
Salaries and Benefits					
Salaries	190,776,238	3%	185,572,770	-5%	194,857,794
Overtime	33,261,347	7%	31,126,918	-10%	34,617,934
Insurance	40,878,559	0%	41,068,111	-3%	42,182,698
Retirement	47,433,887	2%	46,404,188	-4%	48,190,242
Contract Beds	-	-100%	13,296	-54%	29,207
Private Prisons	2,917,917	-93%	39,271,498	-27%	54,090,379
Halfway Houses	1,460,458	18%	1,234,544	6%	1,168,380
Jail Backup	8,446,213	11%	7,640,244	3%	7,414,713
Jail Backup Transportation Reim	315,589	30%	242,009	2%	237,128
ICE-Contract	7,352,538	100%	-	0%	-
Medical Services	50,926,254	11%	45,881,943	5%	43,644,179
Hep C Treatment	1,901,457	-65%	5,503,951	-41%	9,330,498
Institutions	70,688,701	11%	63,664,399	13%	56,219,777
Probation and Parole	1,224,324	-2%	1,250,190	-8%	1,352,760
Community Corrections	3,381,542	-1%	3,418,918	7%	3,195,853
Inmate Programs	2,219,346	5%	2,108,240	-36%	3,286,203
Community Sentencing	991,884	-10%	1,107,928	-10%	1,235,660
General Operations	16,433,116	30%	12,638,709	-20%	15,856,439
Central Office Operations	1,542,704	-12%	1,744,736	-22%	2,227,067
Divisional Operations	4,206,666	107%	2,035,623	-69%	6,549,016
IT	11,991,697	3%	11,669,578	13%	10,308,537
Offender Management System	1,792,124	-42%	3,108,664	16%	2,673,367
OCI / Agri-Services	22,404,784	43%	15,673,277	-5%	16,495,978
	<u>522,547,344</u>		<u>522,379,734</u>		<u>555,163,808</u>
Purchase of Red Rock Correctional	<u>312,147,235</u>				
	<u><u>834,694,579</u></u>				

### Three Year Revolving Fund Comparison

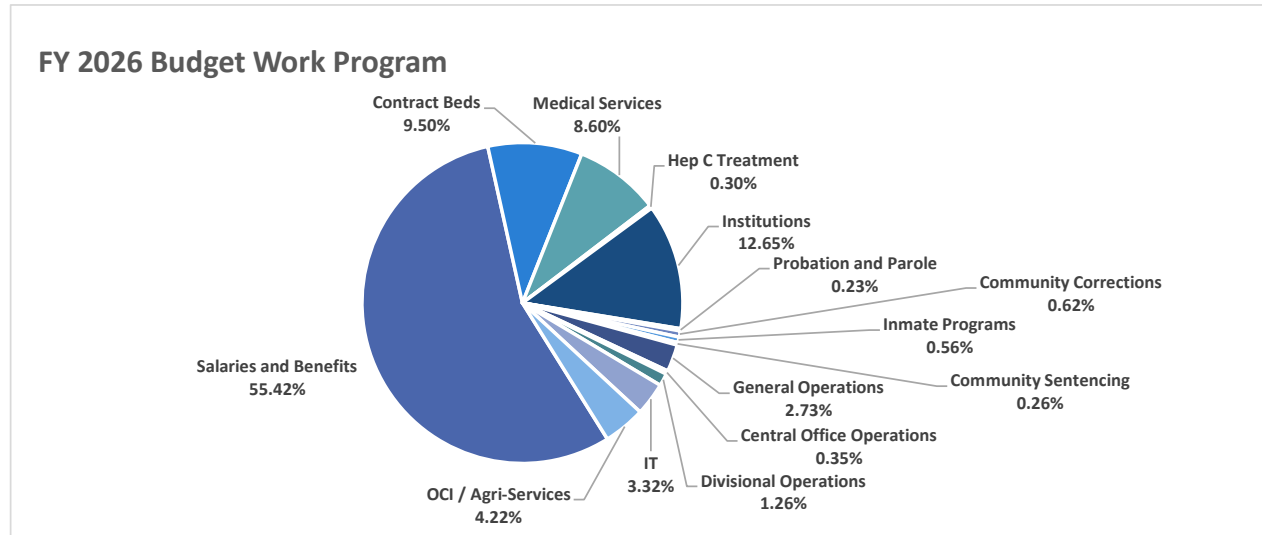
	FY 2026	FY 2026 Budget	FY 2026 Actuals July - May	% Change from FY 25	FY 2025 Actuals July - May	% Change from FY 24	FY 2024 Actuals July - May
200 Revolving Fund		60,745,811	21,781,605	107%	10,519,068	-22%	13,566,381
205 Welfare and Rec. Fund/Canteen		9,812,069	15,465,097	26%	12,236,725	61%	7,610,456
210 Community Sentencing Fund		237,500	69,533	-22%	89,611	-10%	100,048
230 Asset Forfeiture		139,900	90,879	25%	72,826	0%	64,149
280 Prison Industries Fund		41,299,406	39,960,035	20%	33,249,574	5%	31,563,042
283 Long Range Capital Planning		-	-	0%	-	0%	79,803
410 & 430 Federal Funds		5,309,052	3,073,650	-5%	3,246,894	76%	1,846,894
		<u>117,543,738</u>	<u>80,440,799</u>		<u>59,414,697</u>		<u>54,830,774</u>



### FY 2026 Budget Work Program

	<u>Current Budget</u>	<u>Expenditures</u>	<u>Encumbrances</u>	<u>Available Balance</u>
Salaries and Benefits	373,296,101	312,350,030.88	615,888	60,330,182
Contract Beds	63,983,975	20,492,714.99	40,929,271	2,561,989
Medical Services	57,900,000	50,926,254.29	7,023,152	(49,406)
Hep C Treatment	2,000,000	1,901,456.98	11,543	87,000
Institutions	85,211,599	70,688,700.71	13,419,211	1,103,686
Probation and Parole	1,540,629	1,224,324.08	314,723	1,582
Community Corrections	4,158,439	3,381,542.32	711,824	65,072
Inmate Programs	3,769,357	2,219,346.15	1,109,023	440,988
Community Sentencing	1,733,487	991,883.55	727,755	13,849
General Operations	18,401,601	16,433,116.32	1,239,668	728,817
Central Office Operations	2,362,428	1,542,703.71	542,861	276,863
Divisional Operations	8,469,596	4,206,665.60	3,814,738	448,192
IT	22,350,579	13,783,820.27	6,189,386	2,377,373
OCI / Agri-Services	28,454,599	22,404,784.12	5,456,260	593,555
<b>Total</b>	<b>673,632,390</b>	<b>522,547,343.97</b>	<b>82,105,303</b>	<b>68,979,742</b>
Purchase of RRCC	<u>312,147,235</u>	<u>312,147,235.00</u>		
<b>Grand Total</b>	<b><u>985,779,625</u></b>	<b><u>834,694,578.97</u></b>		

FY 2026 Budget Work Programs includes all funding sources.



**Oklahoma Department of Corrections**  
 FY 2026 Appropriation as of May 31, 2026

Account Code	Budgeted	Expenditures	Encumbered	Pre-Encumbered	Committed	Balance
11,12,13 Payroll, Insurance, FICA and Retirement	361,901,590.18	304,178,756.15	573,964.13	-	304,752,720.28	57,148,869.90
15 Professional Services	28,933,312.00	27,613,293.76	4,482,377.57	51,673.91	32,147,345.24	(3,214,033.24)
17 Moving Expenses	-	11,179.00	-	-	11,179.00	(11,179.00)
19 Flexible Benefits	335,000.00	290,116.43	44,883.57	-	335,000.00	-
21, 22 Travel	962,712.00	465,763.14	6,687.28	-	472,450.42	490,261.58
31 Miscellaneous Administrative Expenses	23,754,070.15	19,087,003.15	3,439,890.23	-	22,526,893.38	1,227,176.77
32 Rent Expense	23,376,945.00	20,139,583.77	2,500,626.84	-	22,640,210.61	736,734.39
33 Maintenance & Repair Expense	12,492,540.00	9,465,264.61	1,420,826.35	10,351.23	10,896,442.19	1,596,097.81
34 Specialized Supplies and Materials	57,670,940.00	49,740,531.93	6,579,487.48	-	56,320,019.41	1,350,920.59
35 Production, Safety and Security	2,634,223.00	1,659,433.95	753,172.08	10,317.42	2,422,923.45	211,299.55
36 General Operating Expenses	561,415.00	312,813.35	21,588.66	-	334,402.01	227,012.99
37 Shop Supplies	3,422,035.00	2,319,020.62	350,717.21	-	2,669,737.83	752,297.17
41 Property Furniture and Equipment	7,564,100.41	4,694,922.68	2,245,304.41	-	6,940,227.09	623,873.32
42 Library Equipment and Resources	400.00	-	-	-	-	400.00
43 Lease Purchase	-	-	-	-	-	-
44 Live Stock – Poultry	-	-	-	50,000.01	50,000.01	(50,000.01)
45,46,47 Building Construction and Renovation	484,149.91	464,616.00	-	-	464,616.00	19,533.91
48 Bond Payment	9,979,791.00	9,936,022.45	43,768.61	-	9,979,791.06	(0.06)
49 Inter-Agency Payments	-	-	-	-	-	-
51 Inmate Pay and Health Services	1,506,000.00	1,286,723.04	451,404.14	-	1,738,127.18	(232,127.18)
52 Scholarships, Tuition and other incentives	1,000.00	178.21	70.00	-	248.21	751.79
53 Refunds, Indemnities, and Restitution	-	-	-	-	-	-
54 Jail Back Up and others	6,006,157.97	6,324,812.66	120,570.04	-	6,445,382.70	(439,224.73)
55,59 Assistance Payments to Agencies	-	-	-	-	-	-
60 Authority Orders	-	-	3,756,429.18	-	3,756,429.18	(3,756,429.18)
61 Loans, Taxes, and other Disbursements	2,270.00	4,195.67	-	-	4,195.67	(1,925.67)
62 Transfers – Inmate Medical Payments	14,500,000.00	12,535,946.63	1,014,053.37	-	13,550,000.00	950,000.00
64 Merchandise for Resale	-	-	-	-	-	-
<b>TOTAL</b>	<b>556,088,651.62</b>	<b>470,530,177.20</b>	<b>27,805,821.15</b>	<b>122,342.57</b>	<b>498,458,340.92</b>	<b>57,630,310.70</b>
<b>Funding</b>						
19302 GRF Appropriations	90,518,280.00	82,135,301.38	7,757,544.07	51,673.91	89,944,519.36	573,760.64
19511 FY2025 Carry Over	8,729,629.62	8,578,497.55	110,806.15	-	8,689,303.70	40,325.92
19601 GRF Appropriations	456,840,742.00	379,816,378.27	19,937,470.93	70,668.66	399,824,517.86	57,016,224.14
<b>TOTAL</b>	<b>556,088,651.62</b>	<b>470,530,177.20</b>	<b>27,805,821.15</b>	<b>122,342.57</b>	<b>498,458,340.92</b>	<b>57,630,310.70</b>
					Remaining Payroll	57,148,869.90
						481,440.80

**Oklahoma Department of Corrections**  
*Statement of Revenues, Expenditures and Changes in Fund Balances*  
*Federal Funding*  
*As of July 1, 2025 through May 31, 2026*

Revenue Code	Revenues	410 Fund	430 Fund	Funds
	Current:			
4541	Refund of Federal Grant	\$ -	\$ 11,491.63	\$ 11,491.63
4551 & 2	Federal Reimbursements	1,056.86	476,854.81	477,911.67
4556	Federal Funds From Other State Agencies	548,617.28	2,035,629.69	2,584,246.97
4881	Trans from St Agency - PCard Program Rebate	-	-	-
	<i>Total Revenues</i>	<u>549,674.14</u>	<u>2,523,976.13</u>	<u>3,073,650.27</u>
Account Code	Expenditures			
	Current:			
11,12,13	Payroll	176,527.14	-	176,527.14
15	Professional Services	-	75,000.00	75,000.00
21, 22	Travel	14,568.37	-	14,568.37
31	Misc. Admin. Expenses	4,745.00	-	4,745.00
32	Rent	16,793.04	-	16,793.04
33	Maintenance and Repair	15,214.25	-	15,214.25
34	Specialized Supplies and Materials	-	-	-
35	Production, Safety and Security	-	-	-
36	General Operating Expenses	85,390.82	-	85,390.82
37	Shop Expense	-	1,186.20	1,186.20
41	Furniture and Equipment	241,816.01	1,742,238.05	1,984,054.06
42	Library Equipment and Resources	-	-	-
43	Lease Purchases	-	-	-
44	Livestock and Poultry	-	-	-
45	Land and Right-of-way	-	-	-
46	Building, Construction and Renovation	-	-	-
48	Debt Service	-	-	-
51	Inmate Pay and Health Services	-	-	-
52	Tuitions, Awards and Incentives	-	-	-
53	Refunds and Restitutions	-	-	-
54	Jail Backup, County Jails and Other	-	379,762.80	379,762.80
55	Payment to Gov. Sub-Division	-	245,510.47	245,510.47
59	Assistance Payments to Agencies	-	-	-
61	Loans, Taxes and Other Disbursements	-	-	-
62	Transfers - Out Sourced Health Care	-	-	-
64	Merchandise for Resale	-	-	-
	<i>Total Expenditures</i>	<u>555,054.63</u>	<u>2,443,697.52</u>	<u>2,998,752.15</u>
	<i>Excess of Revenues Over</i>			
	<i>(Under) Expenditures</i>	<u>(5,380.49)</u>	<u>80,278.61</u>	<u>74,898.12</u>
	<b>Cash</b>			
	Beginning Cash Balance	264,209.45	587,359.13	851,568.58
	Revenue Received this Year	549,674.14	2,523,976.13	3,073,650.27
	Expenditures made this Year	(555,054.63)	(2,443,697.52)	(2,998,752.15)
	Beginning Change in Liabilities	-	-	-
	Transfers	-	-	-
	Adjustments	-	-	-
	<i>Ending Cash Balance</i>	<u>\$ 258,828.96</u>	<u>\$ 667,637.74</u>	<u>\$ 926,466.70</u>

**Oklahoma Department of Corrections**  
*Statement of Revenues, Expenditures and Changes in Fund Balances*  
*Federal Funding*  
*For the Month of May 2026*

Revenue Code	Revenues	410 Fund	430 Fund	Funds
	Current:			
4541	Refund of Federal Grant	\$ -	\$ -	\$ -
4551 & 2	Federal Reimbursements	-	105,864.46	105,864.46
4556	Federal Funds From Other State Agencies	44,371.09	73,449.00	117,820.09
4881	Trans from Agency - PCard Program Rebate	-	-	-
	<b>Total Revenues</b>	<b>44,371.09</b>	<b>179,313.46</b>	<b>223,684.55</b>
		<hr/>	<hr/>	<hr/>
Account Code	Expenditures			
	Current:			
11,12,13	Payroll	13,772.02	-	13,772.02
15	Professional Services	-	-	-
21, 22	Travel	-	-	-
31	Misc. Admin. Expenses	-	-	-
32	Rent	1,443.42	-	1,443.42
33	Maintenance and Repair	1,231.22	-	1,231.22
34	Specialized Supplies and Materials	-	-	-
35	Production, Safety and Security	-	-	-
36	General Operating Expenses	9,890.10	-	9,890.10
37	Shop Expense	-	-	-
41	Furniture and Equipment	-	-	-
42	Library Equipment and Resources	-	-	-
43	Lease Purchases	-	-	-
44	Livestock and Poultry	-	-	-
45	Land and Right-of-way	-	-	-
46	Building, Construction and Renovation	-	-	-
48	Debt Service	-	-	-
51	Inmate Pay and Health Services	-	-	-
52	Tuitions, Awards and Incentives	-	-	-
53	Refunds and Restitutions	-	-	-
54	Jail Backup, County Jails and Other	-	-	-
55	Payment to Gov. Sub-Division	-	26,642.61	26,642.61
59	Assistance Payments to Agencies	-	-	-
61	Loans, Taxes and Other Disbursements	-	-	-
62	Transfers - Out Sourced Health Care	-	-	-
64	Merchandise for Resale	-	-	-
	<b>Total Expenditures</b>	<b>26,336.76</b>	<b>26,642.61</b>	<b>52,979.37</b>
		<hr/>	<hr/>	<hr/>
	<i>Excess of Revenues Over (Under) Expenditures</i>	<b>18,034.33</b>	<b>152,670.85</b>	<b>170,705.18</b>
		<hr/>	<hr/>	<hr/>
	<b>Cash</b>			
	Beginning Cash Balance	240,794.63	514,966.89	755,761.52
	Revenue Received this Month	44,371.09	179,313.46	223,684.55
	Expenditures made this Month	(26,336.76)	(26,642.61)	(52,979.37)
	Change in Liabilities	-	-	-
	Transfers	-	-	-
	Adjustments	-	-	-
	<b>Ending Cash Balance</b>	<b>\$ 258,828.96</b>	<b>\$ 667,637.74</b>	<b>\$ 926,466.70</b>
		<hr/> <hr/>	<hr/> <hr/>	<hr/> <hr/>

**Oklahoma Department of Corrections**  
*Statement of Revenues, Expenditures and Changes in Fund Balances*  
 Non- Appropriated Funds  
 As of July 1, 2025 through May 31, 2026

		200 Fund	205 Fund	210 Fund	221 Fund	230 Fund	280 Fund	283 Fund	Funds
<b>Revenue Code</b>	<b>Revenues</b>								
	Current:								
428199	Disbursement Fees	\$ 12,191.30	\$ -	\$ -	\$ -	\$ -	\$ -	\$ -	\$ 12,191.30
433107	Sale of Contraband	4,411.05	-	-	-	-	-	-	4,411.05
433199	Other Fines, Forfeits, Penalties (Admin. Fees, Inst. Debts)	219,757.71	-	69,532.84	-	5,792.83	-	-	295,083.38
441105	Interest on Investments	306,176.59	101,074.90	-	-	-	553,115.44	-	960,366.93
443101	Rent from Land & Buildings	20,373.24	-	-	-	-	-	-	20,373.24
443103	Rent from Land & Buildings	-	-	-	-	-	-	-	-
445199	Other Income From Money & Property	-	-	-	-	-	-	-	-
451101	Insurance and Other Reimbursement for Damages	144,321.32	-	-	-	-	-	-	144,321.32
452005	Reimbursement for Administrative Expense (PPWP)	75,822.88	-	-	-	-	-	-	75,822.88
452075	Reimbursement for Administrative Expense	233,712.82	-	-	-	-	25,794.74	-	259,507.56
452117	Reimbursement of Data Processing Fees	-	-	-	-	-	-	-	-
453003	Reimbursement for Travel Expense	-	-	-	-	-	-	-	-
455201	Federal Reimbursements	-	-	-	-	-	-	-	-
455301	Federal Appropriations (ICE Contract)	10,717,503.59	-	-	-	-	-	-	10,717,503.59
456101	Federal Funds Rec'd from Non-Gov. Ag.	-	-	-	-	-	-	-	-
458101	Refunded Money Previously Disbursed - Goods & Services	231,288.68	-	-	-	-	-	-	231,288.68
458105	Reimbursement for Funds Expended (Refunds - Payroll Reim.)	314,247.18	-	-	-	-	-	-	314,247.18
459151	Pharmaceuticals Rebate	-	-	-	-	-	-	-	-
459171	Program Income (Dog Programs)	15.32	-	-	-	-	-	-	15.32
459199	Other Grants, Refunds and Reimbursements (P-card Rebate)	16,278.33	-	-	-	-	-	-	16,278.33
471122	Farm Products General	-	-	-	-	-	19,266,565.78	-	19,266,565.78
473105	Charge for Service - (Water Treatment Plant)	43,046.59	-	-	-	-	-	-	43,046.59
473121	Recording Charges	5,750.00	-	-	-	-	-	-	5,750.00
473176	Laboratory and Medical Services	259,596.74	-	-	-	-	-	-	259,596.74
473199	Sale of Service (Laundry, Shoe Shine)	-	-	-	-	-	-	-	-
474105	Sale of Documents (Copies)	1,521.94	-	-	-	-	-	-	1,521.94
474122	Food & Beverage Sales	186,160.06	-	-	-	-	-	-	186,160.06
474124	Canteen and Concession Income	-	15,364,022.16	-	-	-	-	-	15,364,022.16
474131	Sale of Merchandise	-	-	-	-	-	19,965,198.71	-	19,965,198.71
478105	Registration Fees	-	-	-	-	-	-	-	-
479121	Paper & Other Recyclable Materials	-	-	-	-	-	-	-	-
479131	Notification of Confinement - Social Security Admin	122,600.00	-	-	-	-	-	-	122,600.00
481102	Contributions - Patients & Inmates	60,264.07	-	-	-	-	-	-	60,264.07
481121	Probation & Parole Fees, DNA Fees, GPS Fees, Restitution Fees	2,446,520.04	-	-	-	-	-	-	2,446,520.04
481155	Cash Forfeiture - State Judgements	119,985.72	-	-	-	-	-	-	119,985.72
481156	Cash Forfeiture - Federal Judgements	-	-	-	-	85,085.75	-	-	85,085.75
481158	Asset Forfeiture - Federal Judgements	-	-	-	-	-	-	-	-
482101	Deposits by Patients and Offenders (Program Fees - Work Release)	6,223,950.69	-	-	-	-	149,359.99	-	6,373,310.68
483607	Sale of Salvage	16,109.27	-	-	-	-	-	-	16,109.27
483612	Sale of Land and/or Land Improvements	-	-	-	-	-	-	-	-
483612	Funds Transferred from LRCP	-	-	-	-	-	-	-	-
488191	Inter Agency Transfers - Pcard Rebate	-	-	-	-	-	-	-	-
	<b>Total Revenues</b>	<b>21,781,605.13</b>	<b>15,465,097.06</b>	<b>69,532.84</b>	<b>-</b>	<b>90,878.58</b>	<b>39,960,034.66</b>	<b>-</b>	<b>77,367,148.27</b>
<b>Account Code</b>	<b>Expenditures</b>								
	Current:								
11,12,13	Payroll	4,530.91	753,711.61	-	-	-	7,822,318.86	-	8,580,561.38
15	Professional Services	7,629,711.45	1,849,898.37	131,456.57	-	-	155,918.39	-	9,766,984.78
21, 22	Travel	25,567.83	1,960.45	20,328.86	-	-	46,127.76	-	93,984.90
31	Misc. Admin. Expenses	194,416.44	465,110.16	958.00	-	-	529,598.34	-	1,190,082.94
32	Rent	107,552.34	17,526.58	-	-	-	314,400.76	-	439,479.68
33	Maintenance and Repair	1,212,117.55	223,344.43	-	-	-	1,081,318.16	-	2,516,780.14
34	Specialized Supplies and Materials	400,632.13	153,399.64	103.64	-	-	409,965.46	-	964,100.87
35	Production, Safety and Security	38,549.86	132.66	-	-	-	337,931.98	-	376,614.50
36	General Operating Expenses	20,891.61	86,594.85	636.69	-	-	27,165.45	-	135,288.60
37	Shop Expense	82,119.14	13,702.37	1,560.91	-	-	765,678.01	-	863,060.43
41	Furniture and Equipment	73,989.78	106,953.08	-	-	-	1,948,837.89	-	2,129,780.75
42	Library Equipment and Resources	-	(97.80)	-	-	-	-	-	(97.80)
43	Lease Purchases	-	-	-	-	-	-	-	-
44	Livestock and Poultry	-	-	-	-	-	14,000.00	-	14,000.00
45	Land and Right-of-way	-	-	-	-	-	-	-	-
46, 47	Building, Construction and Renovation	7,335.09	-	-	312,000,000.00	139,900.00	227,947.81	-	312,375,182.90
48	Debt Service	-	-	-	-	-	-	-	-
51	Inmate Pay and Health Services	-	4,375,920.70	-	-	-	973,518.99	-	5,349,439.69
52	Tuitions, Awards and Incentives	-	2,118.07	-	-	-	-	-	2,118.07
53	Refunds and Restitutions	-	-	-	-	-	-	62,078.68	62,078.68
54	Jail Backup, County Jails and Other	1,231,108.19	-	-	-	-	2,624,779.00	-	3,855,887.19
55	Payment to Gov. Sub-Division	-	-	-	-	-	-	-	-
59	Assistance Payments to Agencies	-	-	-	-	-	-	-	-
61	Loans, Taxes and other Disbursements	1,233.09	-	-	-	-	-	-	1,233.09
62	Transfers - Out Sourced Health Care	133,004.21	-	-	-	-	-	-	133,004.21
64	Merchandise for Resale	-	-	-	-	-	20,818,979.53	-	20,818,979.53
	<b>Total Expenditures</b>	<b>11,162,759.62</b>	<b>8,050,275.17</b>	<b>155,044.67</b>	<b>312,000,000.00</b>	<b>139,900.00</b>	<b>38,098,486.39</b>	<b>62,078.68</b>	<b>369,668,544.53</b>
	<i>Excess of Revenues Over (Under) Expenditures</i>	<i>10,618,845.51</i>	<i>7,414,821.89</i>	<i>(85,511.83)</i>	<i>(312,000,000.00)</i>	<i>(49,021.42)</i>	<i>1,861,548.27</i>	<i>(62,078.68)</i>	<i>(292,301,396.26)</i>
	<b>Cash</b>								
	Beginning Cash Balance	6,343,060.18	1,323,528.70	1,093,280.64	-	139,900.01	16,325,188.89	62,078.68	25,287,037.10
	Revenue Received this Year	21,781,605.13	15,465,097.06	69,532.84	312,000,000.00	90,878.58	39,960,034.66	-	389,367,148.27
	Expenditures made this Year	(11,162,759.62)	(8,050,275.17)	(155,044.67)	(312,000,000.00)	(139,900.00)	(38,098,486.39)	(62,078.68)	(369,668,544.53)
	Beginning Change in Liabilities	(238.00)	-	-	-	-	-	-	(238.00)
	Transfers	-	-	-	-	-	-	-	-
	Adjustments (Payroll Withholdings)	(5,366.47)	-	-	-	-	-	-	(5,366.47)
	<b>Ending Cash Balance</b>	<b>\$ 16,956,301.22</b>	<b>\$ 8,738,350.59</b>	<b>\$ 1,007,768.81</b>	<b>\$ -</b>	<b>\$ 90,878.59</b>	<b>\$ 18,186,737.16</b>	<b>\$ -</b>	<b>\$ 44,980,036.37</b>

**Oklahoma Department of Corrections**  
*Statement of Revenues, Expenditures and Changes in Fund Balances*  
*Non-Appropriated Funds*  
*For the Month of May 2026*

		200 Fund	205 Fund	210 Fund	221 Fund	230 Fund	280 Fund	283 Fund	Funds
<b>Revenue Code</b>	<b>Revenues</b>								
	Current:								
428199	Disbursement Fees	\$ 955.49	\$ -	\$ -	\$ -	\$ -	\$ -	\$ -	\$ 955.49
433107	Sale of Contraband	-	-	-	-	-	-	-	-
433147	Bank Charge Back / Returned Check Fee	-	-	-	-	-	-	-	-
433199	Other Fines, Forfeits, Penalties (Admin. Fees, Inst. Debts)	21,332.77	-	7,545.00	-	-	-	-	28,877.77
441105	Interest on Investments	44,967.14	22,291.45	-	-	-	55,091.42	-	122,350.01
443101	Rent from Land & Buildings	1,533.75	-	-	-	-	-	-	1,533.75
443103	Rent from Land & Buildings	-	-	-	-	-	-	-	-
445199	Other Income From Money & Property	-	-	-	-	-	-	-	-
451101	Insurance and Other Reimbursement for Damages	1,050.00	-	-	-	-	-	-	1,050.00
452005	Reimbursement for Administrative Expense (PPWP)	8,638.96	-	-	-	-	-	-	8,638.96
452075	Reimbursement for Administrative Expense	-	-	-	-	-	-	-	-
452117	Reimbursement of Data Processing Fees	-	-	-	-	-	-	-	-
453003	Reimbursement for Travel Expense	-	-	-	-	-	-	-	-
455201	Federal Reimbursements	-	-	-	-	-	-	-	-
455301	Federal Appropriations (ICE Contract)	-	-	-	-	-	-	-	-
456101	Federal Funds Rec'd from Non-Gov. Ag.	-	-	-	-	-	-	-	-
458101	Refunded Money Previously Disbursed - Goods & Services	125,977.41	-	-	-	-	-	-	125,977.41
458105	Reimbursement for Funds Expended (Refunds - Payroll Reim.)	(1,897.00)	-	-	-	-	-	-	(1,897.00)
459151	Pharmaceuticals Rebate	-	-	-	-	-	-	-	-
459171	Program Income (Dog Programs)	-	-	-	-	-	-	-	-
459199	Other Grants, Refunds and Reimbursements (P-card Rebate)	653.18	-	-	-	-	-	-	653.18
471122	Farm Products General	-	-	-	-	-	1,541,577.99	-	1,541,577.99
473105	Charge for Service - (Water Treatment Plant)	487.39	-	-	-	-	-	-	487.39
473121	Recording Charges	-	-	-	-	-	-	-	-
473176	Laboratory and Medical Services	23,092.47	-	-	-	-	-	-	23,092.47
473199	Sale of Service (Laundry)	-	-	-	-	-	-	-	-
474105	Sale of Documents (Copies)	89.23	-	-	-	-	-	-	89.23
474122	Food & Beverage Sales	34,985.32	-	-	-	-	-	-	34,985.32
474124	Canteen and Concession Income	-	1,974,862.50	-	-	-	-	-	1,974,862.50
474131	Sale of Merchandise	-	-	-	-	-	2,271,838.79	-	2,271,838.79
478105	Registration Fees	-	-	-	-	-	-	-	-
479121	Paper & Other Recyclable Materials	-	-	-	-	-	-	-	-
479131	Notification of Confinement - Social Security Admin	11,200.00	-	-	-	-	-	-	11,200.00
481102	Contributions - Patients & Inmates	-	-	-	-	-	-	-	-
481121	Probation & Parole Fees, DNA Fees, GPS Fees, Restitution Fees	228,711.56	-	-	-	-	-	-	228,711.56
481155	Cash Forfeiture - State Judgements	9,346.96	-	-	-	-	-	-	9,346.96
481156	Cash Forfeiture - Federal Judgements	-	-	-	-	42,085.78	-	-	42,085.78
481158	Asset Forfeiture - Federal Judgements	-	-	-	-	-	-	-	-
482101	Deposits by Patients and Offenders (Program Fees - Work Release)	543,883.82	-	-	-	-	9,225.94	-	553,109.76
483607	Sale of Salvage	5,285.54	-	-	-	-	-	-	5,285.54
483612	Sale of Land and/or Land Improvements	-	-	-	-	-	-	-	-
483612	Funds Transferred from LRCP	-	-	-	-	-	-	-	-
488191	Inter Agency Transfers - Pcard Rebate	-	-	-	-	-	-	-	-
	<b>Total Revenues</b>	<b>1,060,293.99</b>	<b>1,997,153.95</b>	<b>7,545.00</b>	<b>-</b>	<b>42,085.78</b>	<b>3,877,734.14</b>	<b>-</b>	<b>6,984,812.86</b>
<b>Account Code</b>	<b>Expenditures</b>								
	Current:								
11,12,13	Payroll	-	-	-	-	-	598,714.47	-	598,714.47
15	Professional Services	86,012.97	611,438.05	10,499.64	-	-	7,420.36	-	715,371.02
21, 22	Travel	1,145.37	1,960.45	7,238.76	-	-	3,866.92	-	14,211.50
31	Misc. Admin. Expenses	4,590.40	29,915.08	658.00	-	-	48,947.32	-	84,110.80
32	Rent	37,899.64	600.03	-	-	-	39,908.84	-	78,408.51
33	Maintenance and Repair	121,444.40	14,653.88	-	-	-	208,741.95	-	344,840.23
34	Specialized Supplies and Materials	50,768.73	40,088.80	-	-	-	48,916.58	-	139,774.11
35	Production, Safety and Security	1,761.07	-	-	-	-	26,416.59	-	28,177.66
36	General Operating Expenses	295.16	9,837.06	142.64	-	-	2,797.13	-	13,071.99
37	Shop Expense	18,510.84	-	-	-	-	55,852.91	-	74,363.75
41	Furniture and Equipment	637.13	3,055.59	-	-	-	174,982.27	-	178,674.99
42	Library Equipment and Resources	-	-	-	-	-	-	-	-
43	Lease Purchases	-	-	-	-	-	-	-	-
44	Livestock and Poultry	-	-	-	-	-	-	-	-
45	Land and Right-of-way	-	-	-	-	-	-	-	-
46, 47	Building, Construction and Renovation	-	-	-	-	-	740.76	-	740.76
48	Debt Service	-	-	-	-	-	-	-	-
51	Inmate Pay and Health Services	-	368,261.95	-	-	-	64,222.03	-	432,483.98
52	Tuitions, Awards and Incentives	-	-	-	-	-	-	-	-
53	Refunds and Restitutions	-	-	-	-	-	-	-	-
54	Jail Backup, County Jails and Other	93,032.00	-	-	-	-	953,519.00	-	1,046,551.00
55	Payment to Gov. Sub-Division	-	-	-	-	-	-	-	-
59	Assistance Payments to Agencies	-	-	-	-	-	-	-	-
61	Loans, Taxes and other Disbursements	104.99	-	-	-	-	-	-	104.99
62	Transfers - Out Sourced Health Care	39,813.62	-	-	-	-	-	-	39,813.62
64	Merchandise for Resale	-	-	-	-	-	2,207,708.90	-	2,207,708.90
	<b>Total Expenditures</b>	<b>456,016.32</b>	<b>1,079,810.89</b>	<b>18,539.04</b>	<b>-</b>	<b>-</b>	<b>4,442,756.03</b>	<b>-</b>	<b>5,997,122.28</b>
	<i>Excess of Revenues Over (Under) Expenditures</i>	<i>(456,016.32)</i>	<i>(1,079,810.89)</i>	<i>(18,539.04)</i>	<i>-</i>	<i>-</i>	<i>(4,442,756.03)</i>	<i>-</i>	<i>(5,997,122.28)</i>
	<b>Cash</b>								
	Beginning Cash Balance	16,365,805.02	7,821,654.68	1,018,762.85	-	48,792.82	18,862,389.76	-	44,117,405.13
	Revenue Received this Month	1,060,293.99	1,997,153.95	7,545.00	-	42,085.78	3,877,734.14	-	6,984,812.86
	Expenditures made this Month	(456,016.32)	(1,079,810.89)	(18,539.04)	-	-	(4,442,756.03)	-	(5,997,122.28)
	Beginning Change in Liabilities	(13,781.47)	(647.15)	-	-	(0.01)	(110,630.71)	-	(125,059.34)
	Transfers (Cares Act Funding & OMS/IKON Funding)	-	-	-	-	-	-	-	-
	Adjustments (Payroll Withholdings)	-	-	-	-	-	-	-	-
	<b>Ending Cash Balance</b>	<b>\$ 16,956,301.22</b>	<b>\$ 8,738,350.59</b>	<b>\$ 1,007,768.81</b>	<b>\$ -</b>	<b>\$ 90,878.59</b>	<b>\$ 18,186,737.16</b>	<b>\$ -</b>	<b>\$ 44,980,036.37</b>

### FY2027 GA BILL—PUBLIC SAFETY AND JUDICIARY

FY2026 Appropriation	547,359,022
HB 4050 - OPERS Employer Contribution Reform	(12,253,064)
FY26 Contribution 16.5% FY27 Contribution 9.5%	
SB 169 - Longevity	1,606,975
FY27 Schedule Increase 50%	
SB 201 -Teacher Pay Raise \$2,000	176,800
OCIA Debt Service Adjustment	141,159
<b>FY2027 Appropriation</b>	<b>537,030,892</b>

### FY2027 BUDGET BY FUND

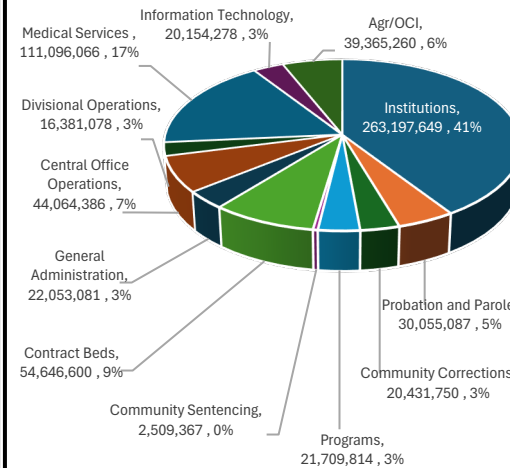
Funds	Limits	Budget	Balance
Appropriation	537,030,892.00	537,030,892.00	-
200 Revolving Fund	60,429,298.00	53,597,735.00	6,831,563.00
205 Welfare and Rec. Fund	12,610,960.00	10,397,758.00	2,213,202.00
210 Community Sentencing Fund	986,780.00	255,000.00	731,780.00
280 Prison Industries Fund	43,184,904.62	40,496,206.00	2,688,698.62
410/430 Federal Funds	3,886,825.00	3,886,825.00	-
<b>Total</b>	<b>658,129,659.62</b>	<b>645,664,416.00</b>	<b>12,465,243.62</b>

200 Revolving Fund - \$40M for Reimbursement of ICE Contract

### FY2027 BUDGET BY DEPARTMENT

Number	Department	Operating	Payroll	Total
1.19	Institutions	94,253,489	168,944,160	263,197,649
21	Probation and Parole	1,493,292	28,561,795	30,055,087
31	Community Corrections	4,780,358	15,651,392	20,431,750
51	Programs	3,320,440	18,389,374	21,709,814
52	Community Sentencing	1,733,487	775,880	2,509,367
56	Contract Beds	54,646,600	-	54,646,600
	Halfway House	1,766,600		
	Jail Backup	12,500,000		
	Jail Backup Transportation	380,000		
	ICE	40,000,000		
60	General Administration	19,217,638	2,835,443	22,053,081
61	Central Office Operations	2,121,339	41,943,047	44,064,386
62	Divisional Operations	5,078,952	11,302,126	16,381,078
63	Medical Services	56,514,444	52,581,622	111,096,066
	HepC	2,000,000		
88	Information Technology	20,154,278	-	20,154,278
	ICON	2,434,239		
42	Agr/OCI	29,978,648	9,386,612	39,365,260
	<b>Total</b>	<b>295,292,965</b>	<b>350,371,451</b>	<b>645,664,416</b>

### FY2027 BUDGET BY DEPARTMENT



### FY2027 PROJECTS

- Outsourcing of Food Service Operations – \$44M
- Capital Assessment Pending Proposal
- ICON Module for Inmate Electronic Health Records – \$4.7M
- Internet Upgrade to Increase Bandwidth from 250 MBPS to 500 MBPS – \$750K
- BIS Scanning Project - Phase 3 Completion of P&P Files - \$500K
- OCI Construction of 2 Buildings for Inmate Employment at MBCC and EWCC - \$4.2M
- Technology – Offender Banking System and OCI/AG Financial System
- Inmate Communication

### FY2027 FUNDED POSITIONS

Funded Positions	Budget	FY26 Avg Filled
Correctional Officers	1,751	1,424
Probation Officers	274	239
Medical	459	403
Other	1,673	1,630
<b>Total</b>	<b>4,157</b>	<b>3,696</b>

## FY2027 BUDGET WORK PROGRAM BY CATEGORY - DETAILS

<b>Salary and Benefits</b>	<b>350,371,451</b>	<b>Community Sentencing</b>	<b>1,733,487</b>
Salary	258,791,699	Outpatient MHSA Treatment	1,631,387
Insurance / Workers Comp - 12,145/per FTE (guidelines 9,000 - 22,000)	50,482,690	Misc. Travel /Postage / Leases / Office Supplies / Fuel	102,100
FICA and Retirement - 16% of Salary (guidelines 16% - 25%)	41,097,062		
<b>Facilities / Community</b>	<b>99,033,847</b>	<b>Contract Beds</b>	<b>54,646,600</b>
Food	43,682,213	Halfway House	1,766,600
Utilities	16,536,000	Jail Backup	12,500,000
GPCC Lease	9,199,763	Jail Backup Transportation	380,000
AGCC Lease	7,500,000	ICE	40,000,000
Building Maintenance / Repairs / Equipment	6,475,421	<b>General Administration</b>	<b>19,217,638</b>
Inmate Pay / Rec. Equipment	5,244,219	Professional Services Attorney / SAO	370,000
Uniforms / Security Equipment	2,654,400	Business Imaging Systems	500,000
General Housekeeping / Sanitation	2,381,993	Fieldware	420,000
Vehicle Fuel / Supplies / Parts	1,608,680	OTA Pikepass	95,000
Inmate Clothing / Linens / Shoes	1,343,041	Risk Management	4,956,654
Misc.-Travel / Postage / Leases / Office Supplies	2,408,117	Lease Administration Building	1,260,000
<b>Probation and Parole</b>	<b>1,493,292</b>	Debt Service	9,924,155
Utilities	213,756	Settlements / Special Projects	1,000,000
Rent of Office Space	742,847	Birth Certificates	194,997
Vehicle Fuel / Supplies / Parts	140,964	Misc. Travel /Postage / Leases / Office Supplies	496,832
Safety Security Supplies / Equipment	127,063	<b>Central Office</b>	<b>2,121,339</b>
Offender Supplies / Assess / Trans	71,300	Academy	252,271
Interstate Compact	39,920	Central Transportation	514,501
Misc. Travel /Postage / Leases / Office Supplies	157,442	Inspector General	395,276
<b>Programs</b>	<b>3,320,440</b>	Stella's Kitchen	385,400
VoTech / License / Testing	1,875,406	Human Capital	293,152
BJCC Substance Abuse NW	438,506	Dir. / Comm. / Audit / Counsel / Bus / Analytics	280,739
Grants	1,006,528		



Incarcerates	Females	Males	Total
State Facilities	2,283	19,684	21,967
Halfway Houses	0	119	119
Out Count	32	190	222
County Jail Transfers Pending	123	1,306	1,429
<b>Grand Total</b>	<b>2,438</b>	<b>21,299</b>	<b>23,737</b>

Community Offenders	Females	Males	Total
Probation Supervision	3,437	13,645	17,082
Parole Supervision	565	2,202	2,767
Community Sentencing	474	1,250	1,724
GPS	44	76	120
<b>Grand Total</b>	<b>4,520</b>	<b>17,173</b>	<b>21,693</b>

### Inmates Earned Credit Level

Level	Change	Total	Percentage
1	↓ 4%	3,348	14%
2	↑ 3%	3,241	14%
3	↑ 4%	2,831	12%
4	↑ 1%	14,284	60%

## Board of Corrections – Population Analysis



As of  
**May 31, 2026**

Total System Population	Females	Males	Total
Current Population	6,958	38,472	45,430
Population Last Year	7,248	38,604	45,852
Change	(-290)	(-132)	(-422)

### Death Row Inmates Youthful Offenders

Male	24	Male	15
Female	1	Female	1

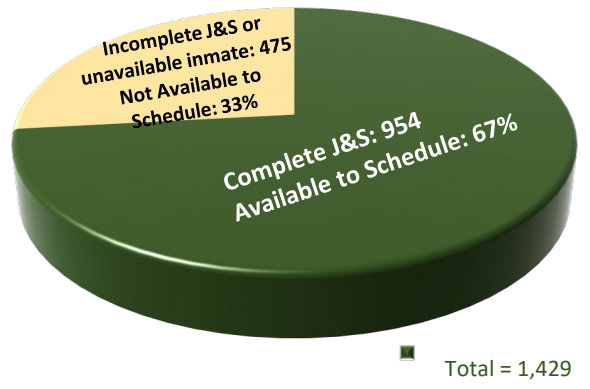
## Agency Vacancies 25

### General Population

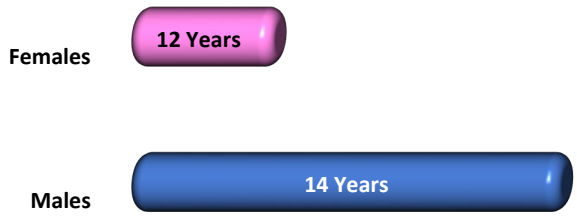
Vacancies = 207  
(1%)



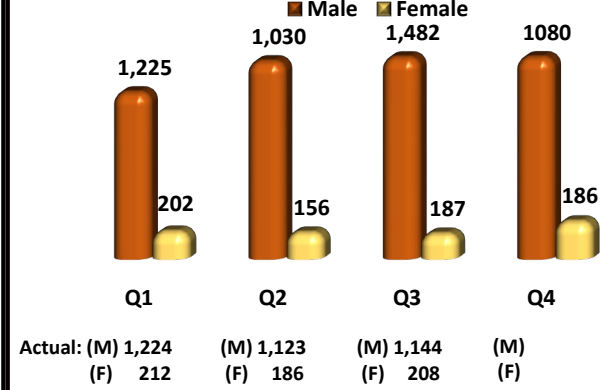
### County Jail Backlog



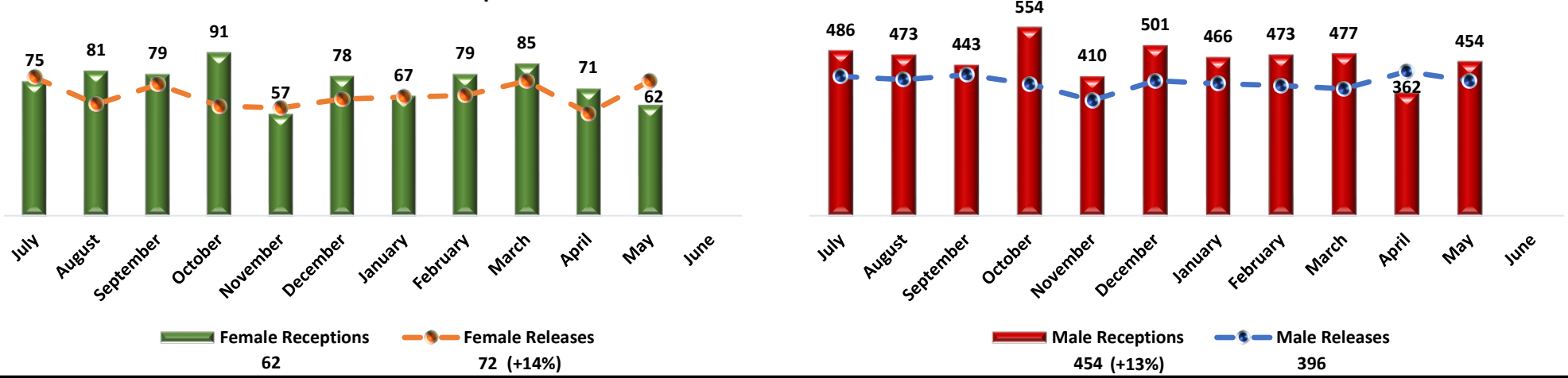
### Average Sentence Length



### Quarterly Projected Releases



## Receptions and Releases for the Fiscal Year 2026



## Designated Population

Vacancies = 428  
(12%)

