

What is Source Water?

Source water simply refers to sources of drinking water which can include both **surface water** bodies such as streams, rivers, lakes, and reservoirs as well as **groundwater** which is water stored in the spaces between soil and strata under the surface of the earth.

It is imperative that we **protect** the **quality** and **presence** of these sources to ensure the continued safe use of these waters for drinking. Water is a valuable resource for humans since less than 1 percent of the earth's water is potable.

The **Oklahoma Source Water Protection Program (SWP)** assists public water systems with identifying their **Source Water Protection Areas (SWPAs)** and **Potential Sources of Contamination (PSOCs)** so they can better protect their drinking water sources.

This publication is issued by the Oklahoma Department of Environmental Quality authorized by Robert Singletary, Executive Director. Copies have been prepared at a cost of \$0.106 each. Copies have been deposited with the publications clearinghouse of the Oklahoma Department of Libraries. (Handouts/WQD/Source Water Protection Program Trifold.indd 7/2025)

How to Participate:

Reach out to the Capacity Development Section via email or phone and request to participate in the **FREE** program.

Email: DEQ.CapDev@deq.ok.gov

Phone: (405) 702-8141

You can also visit the DEQ website for more info, helpful resources, and to sign up for the program.

<https://tinyurl.com/44hsyfut>



Oklahoma Source Water Protection Program

Program Information



OKLAHOMA
Environmental
Quality



OKLAHOMA
Environmental
Quality

SWP Program Process:



Meet with DEQ to discuss details of the water system and any knowledge of PSOCs.



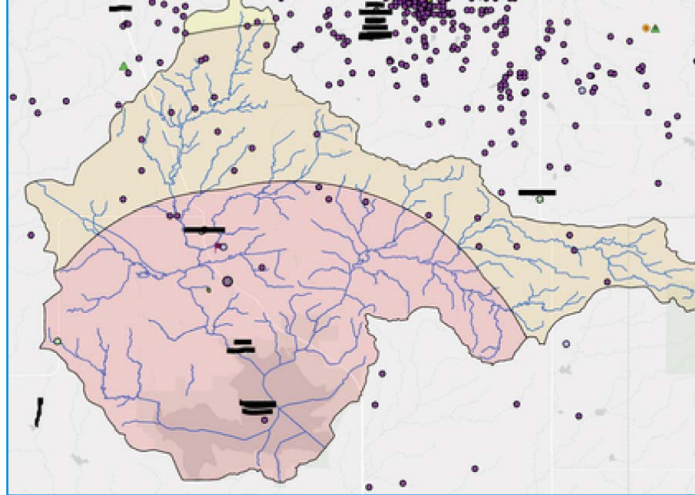
DEQ conducts a Source Water Assessment that evaluates the susceptibility of the water sources.



With the results of the assessment, DEQ composes a report and organizes another meeting to review the results.


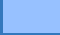



Either independently or with DEQ's assistance, a plan is created and implemented on how to enhance source water for a system.

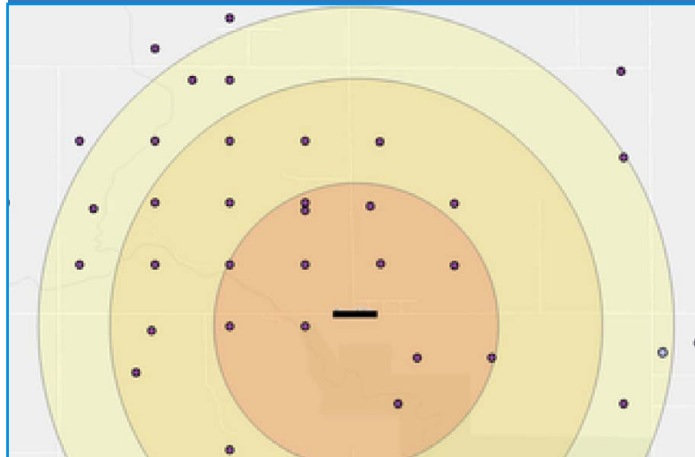


Example of a surface water SWPA delineation

Components of a SWP Assessment:

-  **Delineation** of the SWPAs.
-  **Inventory** of the PSOCs and land use within the SWPAs.
-  **Determination** of the system's Susceptibility to contamination from the inventoried sources.

Example of a groundwater SWPA delineation



What are Potential Sources of Contamination?

Point sources of pollution are individual identifiable sources that are easy to point to. This could include:

- Concentrated Animal Feeding Operations
- Underground Storage Tanks
- Underground Injection Wells
- Hazardous Waste Sites
- Solid Waste Facilities
- Oil and Gas Wells
- Airports/Runways
- Superfund Sites
- Brownfields



Non-point sources of pollution do not originate from one single source. This pollution usually occurs when precipitation or snowmelt moves across the land and carries contaminants with them. These contaminants can include:

- Fertilizers, Herbicides, Insecticides
- Oil and Grease
- Bacteria
- Nutrients
- Road salts
- Sediment

