

# Oklahoma Source Water Protection Program Information



Updated March 2025

## What is Source Water?

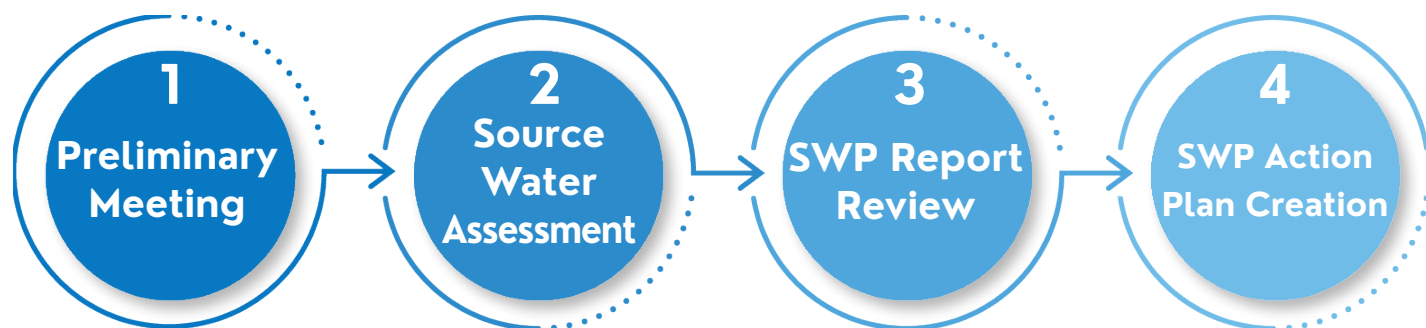
Source water simply refers to sources of drinking water which can include both **surface water** bodies such as streams, rivers, lakes, and reservoirs as well as **groundwater** which is water stored in the spaces between soil and strata under the surface of the earth.

It is imperative that we **protect** the **quality** and **presence** of these sources to ensure the continued safe use of these waters for drinking. Water is a valuable resource for humans since less than 1 percent of the earth's water is potable.

The **Oklahoma Source Water Protection Program (SWP)** assists public water systems with identifying their **Source Water Protection Areas (SWPAs)** and **Potential Sources of Contamination (PSOCs)** so they can better protect their drinking water sources.



## The Oklahoma SWP Program Process:



Meet with DEQ to discuss details of the water system and any knowledge of PSOCs.

DEQ conducts a Source Water Assessment that evaluates the susceptibility of the water sources.

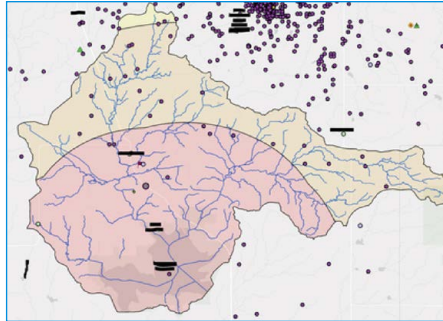
With the results of the Assessment, DEQ composes a report and organizes another meeting to review the results.

Either independently or with DEQ's assistance, a plan is created and implemented on how to enhance source water for a system.

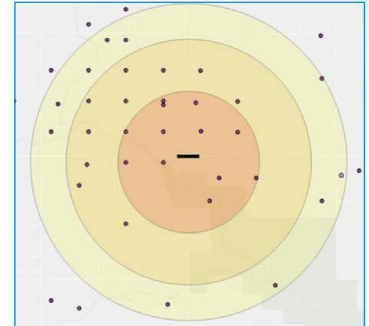
# Oklahoma Source Water Protection Program Program Information

## Components of a SWP Assessment:

- **Delineation** of your SWPAs.
- **Inventory** of the PSOCs and land use within the SWPAs.
- **Determination** of the system's Susceptibility to contamination from the inventoried sources.



Example of a surface water SWPA delineation



Example of a groundwater SWPA delineation

## What are Potential Sources of Contamination?

PSOCs can be categorized into two groups; Point sources and Non-point sources.

**Point sources** of pollution are individual identifiable sources that are easy to point to.

This could include:

- Concentrated Animal Feeding Operations
- Underground Storage Tanks
- Underground Injection Wells
- Hazardous Waste Sites
- Solid Waste Facilities
- Oil and Gas Wells
- Airports/Runways
- Superfund Sites
- Brownfields



**Non-point sources** of pollution do not originate from one single source. This pollution usually occurs when precipitation or snowmelt moves across the land and carries contaminants with them. These contaminants can include:

- Fertilizers, Herbicides, Insecticides
- Oil and Grease
- Bacteria
- Nutrients
- Road salts
- Sediment



## How to Participate:

Reach out to the Capacity Development Section via email or phone and request to participate in the **FREE** program.

**Email:** [DEQ.CapDev@deq.ok.gov](mailto:DEQ.CapDev@deq.ok.gov)

**Phone:** (405) 702-8141

You can also visit the DEQ website for more info, helpful resources, and to sign up for the program. <https://tinyurl.com/44hsyfut>

