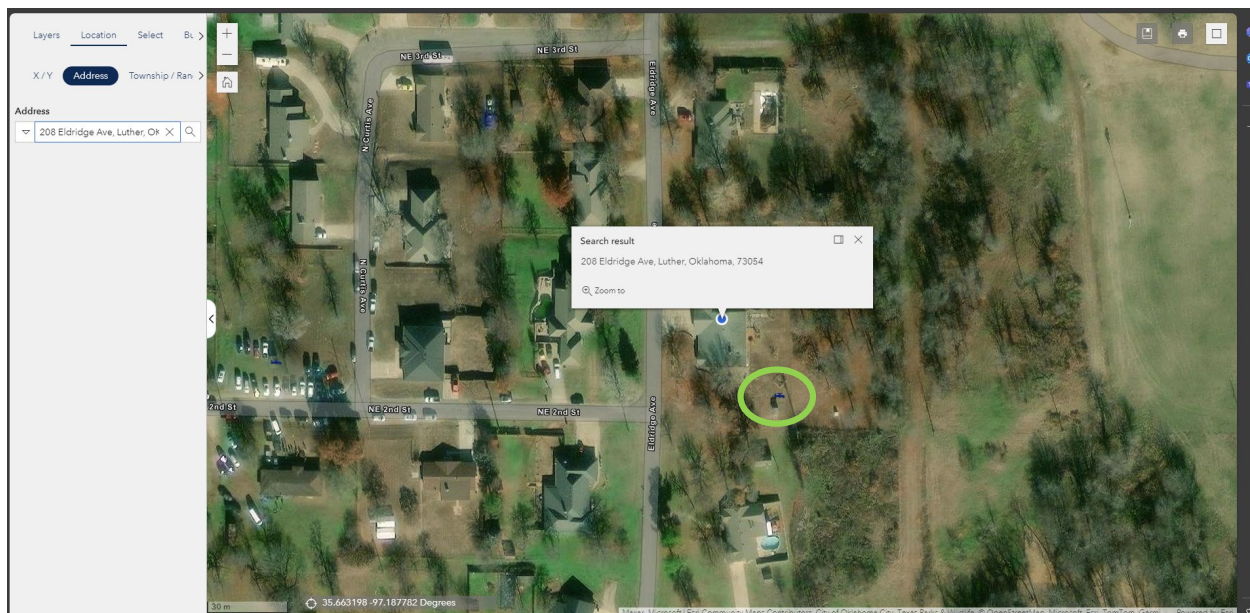
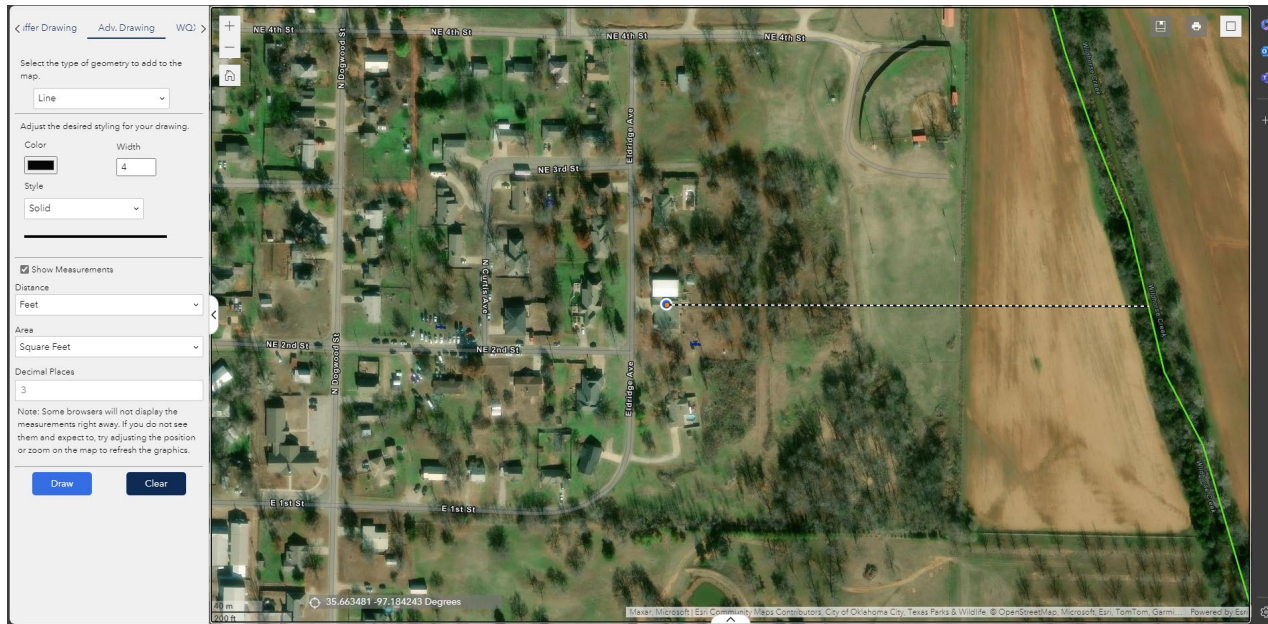


- Open Dataviewer as you normally would.
- Select your Basemap, open the Layers tab.
- View the Water Data Layer and click the dropdown arrow.
 - Select the PWS Wells Layer
- Your screen should now look like the above photo.



- Go to the Location tab and type in the location of your job.
- The Dataviewer now shows the location. It also shows a well (circled in green) is near the home.
 - Your job may not show either a well or an impaired waterbody.



- Go to the Advanced Draw tab to determine the zone.
- Select the line option.
 - If you choose to draw a circle, the length value that is provided represents the circumference of the circle and not the radius of the circle.
- Make sure to select the box next to Show Measurements.
- Click once on the property.
 - A dotted line will appear (as the photo above shows). If there is a well or an impacted waterbody, drag your cursor to either and double click on the well/waterbody.
 - A solid line will appear.
 - To see the distance, you will need to zoom slightly out.
 - You should now see something like the photos below.



