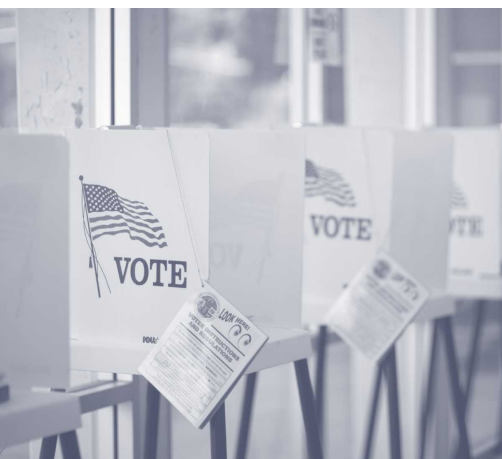




# VOTING

## *in Oklahoma*

A Guide for Citizens with Disabilities



2010

OKLAHOMA DEVELOPMENTAL



DISABILITIES COUNCIL

[www.okddc.ok.gov](http://www.okddc.ok.gov)

**Voting is your constitutional right and responsibility as a citizen. It is an important way to help select the national, state and local officials who make laws, design programs and decide how tax dollars are spent.**

**National elections for president usually get the most attention, but it is the people who are elected to state and local positions that have the real power to affect your daily life.**

**Take time to learn who your elected officials are and how their decisions can affect you. You can go to the Oklahoma Legislature on the Internet at [www.lsb.state.ok.us](http://www.lsb.state.ok.us) and select the button called "Find Your Legislator" to find out who your state and U.S. representatives are. You may also call (800) 522-8502, (800) 522-8506 (Relay Oklahoma) or (800) 722-0353 (TDD).**

**When you become a part of the election process you can work to elect people who support the issues that matter most to you.**

## **Who is Eligible?**

A person who is eligible to register to vote must be at least 18 years old, a United States citizen and a resident of Oklahoma.

Some persons who have legal guardians are not eligible to vote because of the type of guardianship a judge determined. If you have a guardian, or have a guardianship order pending, ask your guardian or the judge about your right to register and vote.

## **How to Register**

You must fill out an application form. Forms are available at your County Election Board, post offices, tag agencies, libraries and many other public locations. You will be offered a voter registration application when you get your driver's license and when you apply for assistance at some government agencies.

You also may print an application form on the State Election Board Web site at [www.elections.state.ok.us](http://www.elections.state.ok.us), call (405) 521-2391, or send a request to receive a form by U.S. Mail at P.O. Box 53156, Oklahoma City, OK 73152.

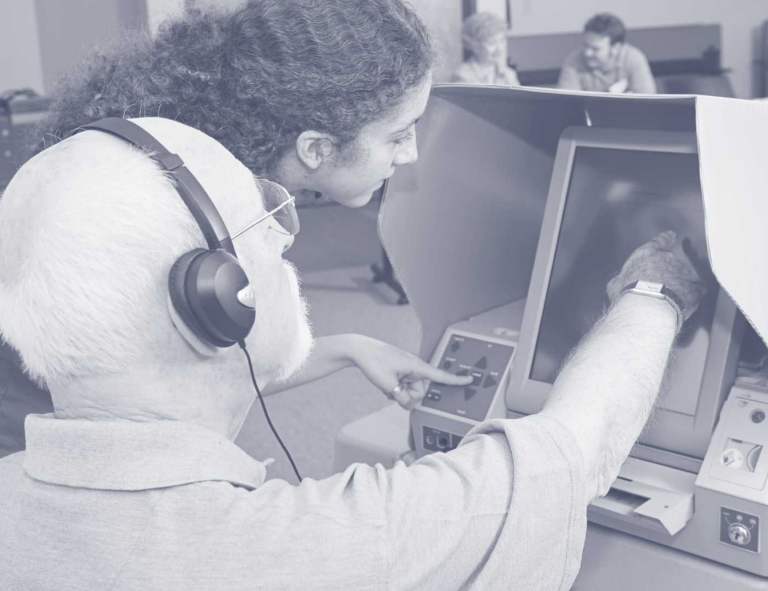
The application form asks for:

- your name and address
- your political affiliation
- your birth date
- your driver's license number
- the last four digits of your Social Security number (required if no driver's license).

You must sign and date the oath printed on the form.

## **When to Register**

You may submit your voter registration application form at any time. However, voter identification cards cannot be issued during the 24 days before to an election. If the County Election Board receives your application during the 24 days before an election, you will not receive your voter identification card until after the election. If you will become 18 during the 60 days before an election, you may apply for voter registration between 25 and 60 days before the election.



### **How to Submit Your Application**

You may mail your voter registration application to the State Election Board. The card is addressed, but you must add a first-class postage stamp. If you fill out your voter registration application form at a tag agency when you get your driver's license or when you apply for assistance at a government agency, the agency will mail the form to the State Election Board for you.

If you are unable to fill out and sign or make a mark on the application, contact your County Election Board for more information.

### **Voter ID Card**

You do not become a registered voter until the County Election Board in the county where you live has approved your application. When your application is approved, the County Election Board will mail a voter identification card to you. Your voter identification card lists your name, address, political party affiliation and the precinct, or polling place, where you will vote.

When you receive your voter identification card, look at it carefully and report any errors to the County Election Board immediately. Keep your voter identification card in a safe place and always take it with you when you go to vote. Some new registered voters are asked for identification when they vote for the first time in certain kinds of elections.

## **At the Polling Place**

Polls are open from 7 a.m. until 7 p.m. If you are in line to vote at 7 p.m., you will be able to vote. Poll workers will ask your name, and ask you to sign a registry. They will give you a ballot and a pen, and direct you to a voting booth. After you mark your ballot, put it in the voting device and leave the polling place. Every county in Oklahoma uses electronic vote counting devices.

## **Voter Assistance**

Some voters need assistance, and poll workers are trained to assist voters who need it. They include:

- Voters who have a physical disability and are unable to mark their own ballots.
- Voters who cannot read.
- Voters who are blind or have a visual disability.
- Voters who are physically unable to enter the polling place.

## **Accessibility of Polling Places**

Election officials work to assure that polling places are in accessible buildings. Curbside voting is available for voters who are unable to enter the polling place.

## **Absentee Voting**

**Regular Application** – Any registered voter in Oklahoma may vote by absentee ballot. It is not necessary to give a reason for voting absentee. Follow the special instructions on page 2 of the application for submitting this request.

**Incapacitated Application** – Any registered voter in Oklahoma who is physically incapacitated or charged with the care of another person who is physically incapacitated and who cannot be left alone may vote by absentee ballot.

Contact your County Election Board if you want or need to vote by absentee ballot.

## **Closed Primary System**

Oklahoma has a closed primary system. Only voters who are registered members of a recognized political party may vote for the party's candidates in primary and runoff primary elections. Registered Independent voters



may be eligible to vote in party's primaries and runoff primaries if authorized by the party.

However, nonpartisan judicial offices, state questions and county questions often are included in primary elections. All registered voters, including Independents, are entitled to receive those ballots. At general elections, all voters receive the same ballot and may vote for any candidate or question on the ballot.

### **Changing Your Registration**

You may need to change your voter registration. Changes you may need to make are:

- your address
- your name
- your political affiliation.

You must fill out another voter registration application to change your voter registration. You may change your registration at any time with one exception. You may not change your political affiliation during the period from June 1 through August 31, inclusive, in any even-numbered year. The last day on which you may change your political affiliation before the closed period is May 31; the first day on which you may change your political affiliation after the closed period is Sept. 1.

## Cancelled Registrations

In most cases, voter registration is permanent. However, some voter registrations are canceled.

The County Election Board may cancel a registration:

- if the voter dies
- if the voter is convicted of a felony
- if the voter has a guardianship order that has removed the right to vote
- if the voter moves and registers again in another county or in another state
- if the voter asks the County Election Board in a written, notarized statement to cancel the registration
- if the voter does not respond to correspondence from the County Election Board and does not vote for more than four years.

For additional information about voting in Oklahoma, contact your local County Election Board or the Oklahoma State Election Board at P.O. Box 53156, Oklahoma City, OK 73152, (405) 521-2391. The State Election Board Web site is [www.elections.state.ok.us](http://www.elections.state.ok.us).

OKLAHOMA DEVELOPMENTAL



DISABILITIES COUNCIL

P. O. Box 25352

Oklahoma City, OK 73125

(405) 521-4984 (V/TDD)

1-800-836-4470 (Toll Free V/TDD)

(405) 521-4910 (Fax)

[www.okddc.ok.gov](http://www.okddc.ok.gov)



**Oklahoma State Election Board**  
**(405) 521-2391**

If you have a problem at your polling place on an election day, contact your County Election Board listed below.

**County Election Boards in Oklahoma**

<b>Adair</b>	<b>918-696-7221</b>
Alfalfa	580-596-2718
<b>Atoka</b>	<b>580-889-5297</b>
Beaver	580-625-4742
<b>Beckham</b>	<b>580-928-3314</b>
Blaine	580-623-5518
<b>Bryan</b>	<b>580-924-3228</b>
Caddo	405-247-5001
<b>Canadian</b>	<b>405-422-2422</b>
Carter	580-223-5290
<b>Cherokee</b>	<b>918-456-2261</b>
Choctaw	580-326-5164
<b>Cimarron</b>	<b>580-544-3377</b>
Cleveland	405-366-0210
<b>Coal</b>	<b>580-927-3456</b>
Comanche	580-353-1880
<b>Cotton</b>	<b>580-875-3403</b>
Craig	918-256-7559
<b>Creek</b>	<b>918-224-3529</b>
Custer	580-323-5124
<b>Delaware</b>	<b>918-253-8762</b>
Dewey	580-328-5668
<b>Ellis</b>	<b>580-885-7721</b>
Garfield	580-237-6016
<b>Garvin</b>	<b>405-238-3303</b>
Grady	405-224-1430
<b>Grant</b>	<b>580-395-2862</b>
Greer	580-782-2307
<b>Harmon</b>	<b>580-688-2460</b>
Harper	580-735-2313
<b>Haskell</b>	<b>918-967-8792</b>
Hughes	405-379-2174
<b>Jackson</b>	<b>580-482-2370</b>
Jefferson	580-228-3150
<b>Johnston</b>	<b>580-371-3670</b>
Kay	580-362-2130
<b>Kingfisher</b>	<b>405-375-3895</b>



Kiowa	580-726-2509
Latimer	918-465-3703
LeFlore	918-647-3701
Lincoln	405-258-1349
Logan	405-282-1900
Love	580-276-2242
McClain	405-527-3121
McCurtain	580-286-7405
McIntosh	918-689-2452
Major	580-227-4520
Marshall	580-795-5460
Mayes	918-825-1826
Murray	580-622-3800
Muskogee	918-687-8151
Noble	580-336-3527
Nowata	918-273-0710
Okfuskee	918-623-0105
Oklahoma	405-713-1515
Okmulgee	918-756-2365
Osage	918-287-3036
Ottawa	918-542-2893
Pawnee	918-762-2125
Payne	405-747-8350
Pittsburg	918-423-3877
Pontotoc	580-332-4534
Pottawatomie	405-273-8376
Pushmataha	580-298-3292
Roger Mills	580-497-3330
Rogers	918-341-2965
Seminole	405-257-2786
Sequoyah	918-775-2614
Stephens	580-255-8782
Texas	580-338-7644
Tillman	580-335-2287
Tulsa	918-596-5780
Wagoner	918-485-2142
Washington	918-337-2850
Washita	580-832-3658
Woods	580-327-1452
Woodward	580-256-3609