

# Internet Explorer Setting for Viewing Assessment Overview and other Reports When Not Appearing

## Full Screen

1. Run the **Assessment Overview Report** (see the *CSA Manual* or *CSI Manual* for instructions on running this report)
2. **Right-click (#1)** in the frame and Select **Properties**

Questionmark

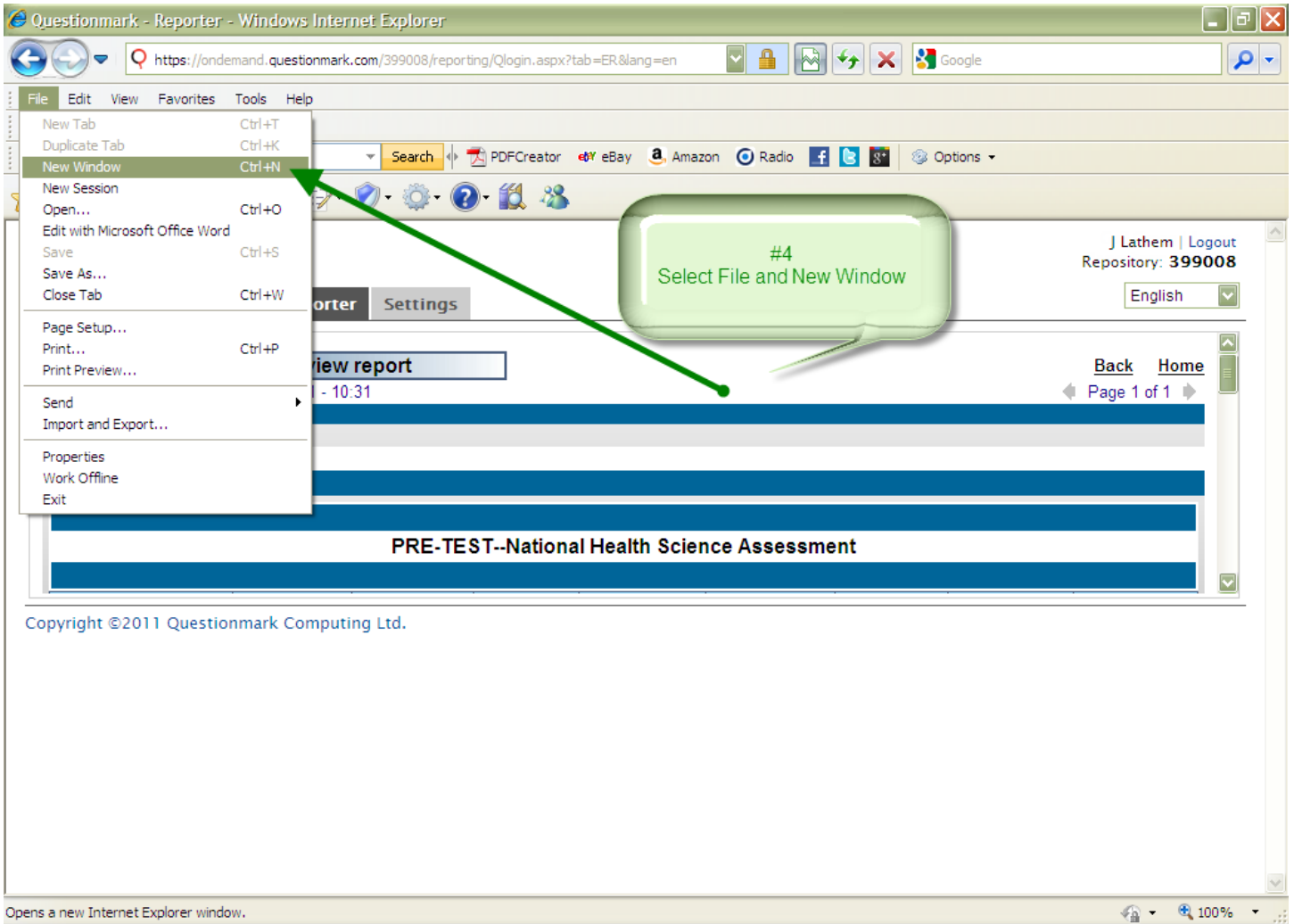
The screenshot displays the 'Assessment overview report' for the '2013 Law PSSC Core Assessment'. The report includes a table with the following data:

Property	Value
Assessment name	2013 Law PSSC Core Assessment
Assessment ID	3312099752694888
Date/time first taken	March 11, 2013 - 15:23
Date/time last taken	June 11, 2013 - 13:11
Number of times finished	81
Minimum score of those finished	23
Maximum score of those finished	91
Mean score of those finished	62
Least time taken for those finished	0:03:12
Most time taken for those finished	1:17:07

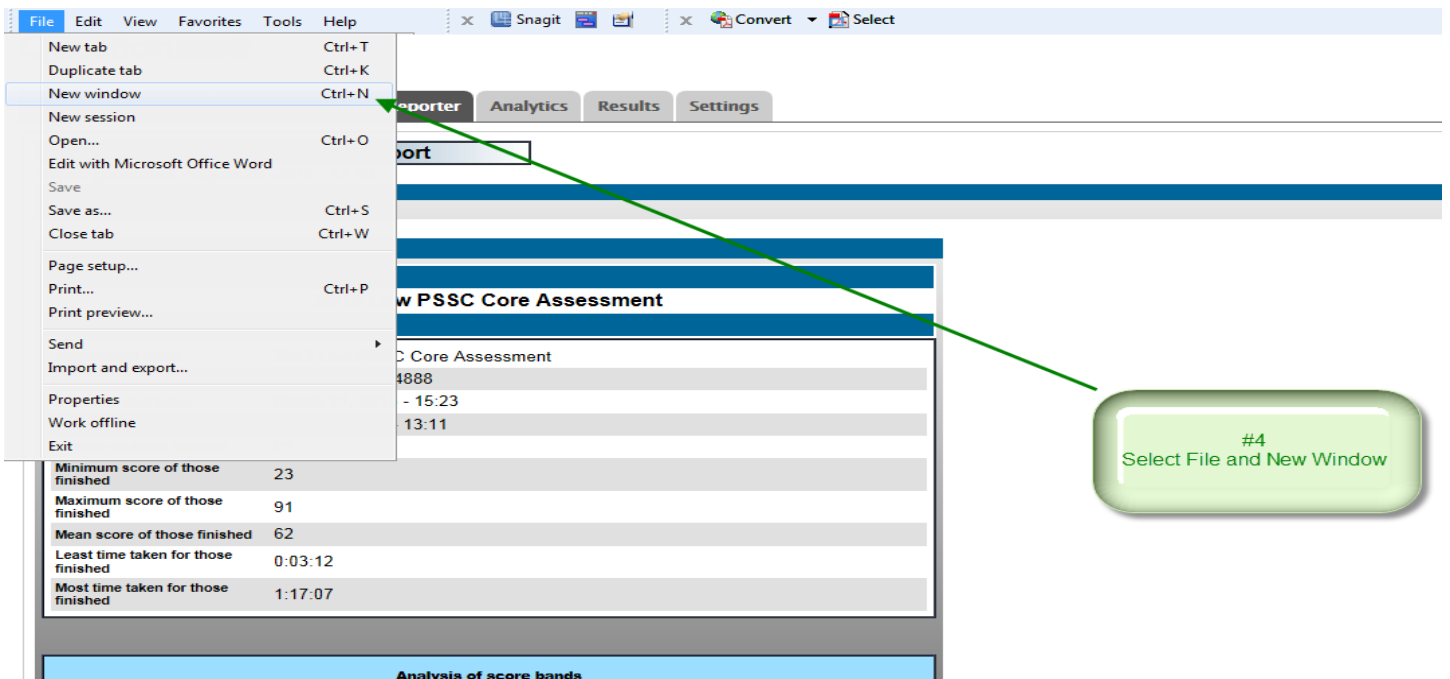
Below the table is an 'Analysis of score bands' chart showing three bars: a tall green bar for 57 (66%), a very short grey bar for 5 (6%), and a medium green bar for 24 (28%).

A right-click context menu is open over the report table, and a green callout bubble labeled '#1 Right-click and Select Properties' points to the 'Properties' option in the menu.

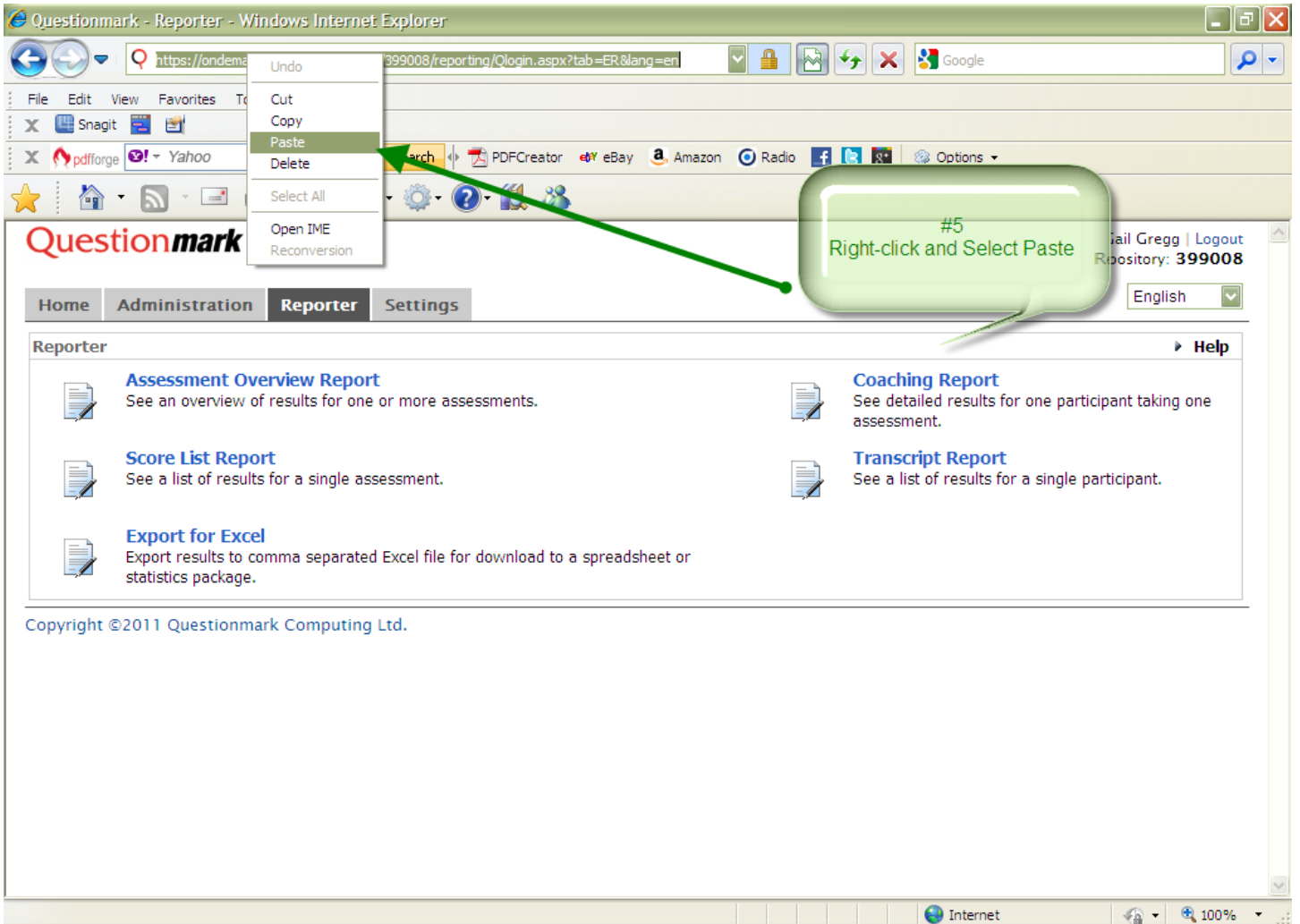
### 3. Highlight the Address URL (#2) and Click Copy (#3)



### 4. Select File, New Window (#4) from the Internet Explorer Menu



## 5. Right-click in the Address bar and Select Paste (#5)



6. Click on Go or press Enter on the Keyboard to open the report in the new window. You should now be able to print the report with no issues.