

**Activity
9.1**

Name _____ Date _____ Hour _____

Unit Word Search

Student Materials

Pencil

Directions

Fill in the blank with the correct term from the word bank. Find each word within the word search.

- _____ 1. Mustangs are considered to be _____ .
- _____ 2. Horses are measured in terms of _____ .
- _____ 3. A horse that is taller and much heavier than a light horse
- _____ 4. Horse in the first year of life
- _____ 5. A female horse younger than three years is a _____ .
- _____ 6. A male horse that has been castrated is a _____ .
- _____ 7. Considered the oldest purebred horse in the world
- _____ 8. Steer roping is an event often seen at a _____ .
- _____ 9. Yellowish or gold body color with black points
- _____ 10. Golden yellow body color with a white or flaxen mane and tail
- _____ 11. Term for a color pattern that always includes darker points
- _____ 12. Any marking on the horse's forehead
- _____ 13. A vertical marking that extends the length of the face and is of medium width and is relatively uniform
- _____ 14. A male horse that has not been castrated is a _____ .
- _____ 15. A horse from 8 to 14.2 hands high is a _____ .
- _____ 16. The highest point on the shoulder

- _____ 17. The tips of the ears, the muzzle, the lower legs, and the mane and tail are _____.
- _____ 18. Long, fine hair on the lower legs of draft horses
- _____ 19. A marking that extends from the horse's coronet halfway up the cannon bone
- _____ 20. A female horse over three years of age is a _____.
- _____ 21. A narrow marking between the horse's forehead and nostrils is a _____.
- _____ 22. Spotted horse that must be of Quarter Horse or Thoroughbred descent
- _____ 23. Solid red or brownish red color
- _____ 24. Brown or red body color with black points
- _____ 25. Spotted coloring that can be of a breed

Word Bank

Arabian
bay
blaze
buckskin
draft
dun
feathers

feral
filly
foal
gelding
hands
mare
Paint

palomino
Pinto
points
pony
rodeo
sock
sorrel

stallion
star
strip
withers

M P X D O E S P N S X H G S R E H T A E F Q
 L A G Q R R Y I A U O B Y R N W P O Z O V F
 T L Y A E U L N I W G R A T Z L K A A S Q E
 Z O M H B U W T B G T N R Y Z X L L T K M R
 C M T Y R U Y O A U Z A I E F B D A P H K A
 V I W Z L X C R R O P S M D L V L O Z H Y L
 W N D B B L N K A S T R I P L L W E W A W G
 T O R C I N I O S D U N B T I E I D B F Q Z
 K K P S X G E F O K L Q O O Q H G O N Q G Y
 P V L Y V R L Y Q Y I V N O A M V R G L W Z
 Y A F F D F G O N V F N P N X R A T S Z L X
 H F I W O O U D D O D J D T F A R D K V A A
 R K D N F M A K H Y P S U V E D D I C F R R
 N P X Y T X W P O I N T S B W H S V O X I D
 B B P R W O L C V I S D M D C Q E P S F W A

Activity 9.2

Name _____ Date _____ Hour _____

Research a Career in the Equine Industry

Student Materials

Pencil and paper or computer/printer

Resources to research careers

Examples:

Online sites

Books

Magazines

Personal interviews

Directions

Choose a career in the equine industry that you are interested in finding out more about. The career may be a “hands-on” equine career such as a horse trainer, farrier, or equine veterinarian. The career may also be related to the equine industry such as writing for agricultural publications, teaching, sales representative for equine-related products, or advertising/marketing for equine related products/associations.

Write a paper over the career that is at least two pages in length. Answer questions about the career in your paper such as:

- Why did you choose that specific career?
- How does the career relate to the equine industry?
- What types of businesses hire for that career?
- What type of degree or training is required for the career?
- What is the average salary?
- What are the working conditions and hours?

Activity 9.3

Name _____ Date _____ Hour _____

Research a Horse Breed

Student Materials

Pencil and paper or computer/printer

Resources to research breeds

Examples:

Online sites

Books

Magazines

Personal interviews

Directions

Choose a horse breed that you are interested in finding out more about. You may choose a horse breed listed in the unit or one from another source such as the Oklahoma State University Breeds of Livestock website <http://www.ansi.okstate.edu/breeds/horses/>.

Write a paper over the breed that is at least two pages in length. Answer questions about the breed in your paper such as:

- Why did you choose that specific breed?
- Where did the breed originate?
- What is the breed used for?
- What are the characteristics of the breed?
- How common is the breed in the United States?
- What is the breed association?
- What are prices that are commonly paid for the breed?

Activity
9.4

Name _____ Date _____ Hour _____

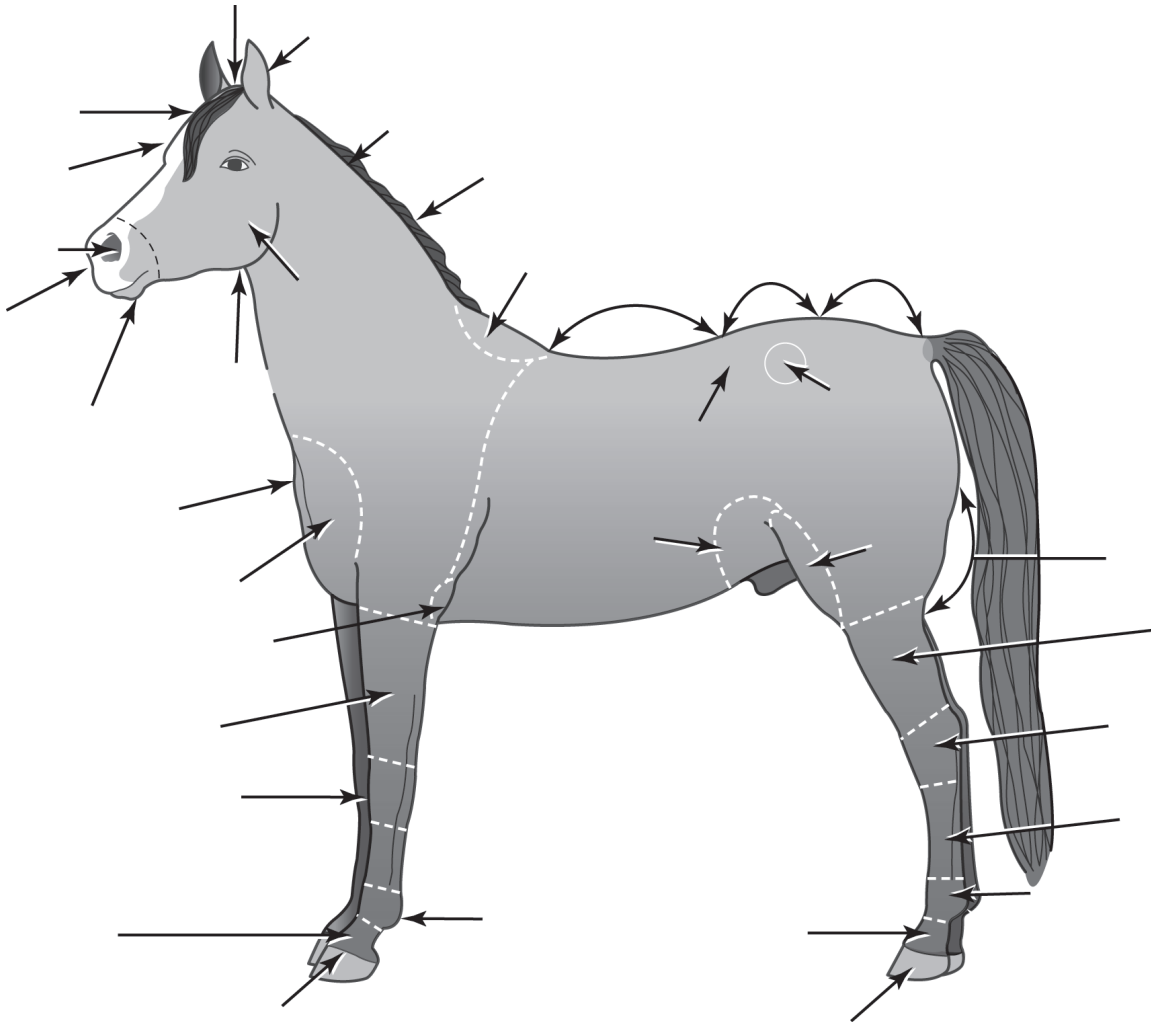
Label Parts of a Horse

Student Materials

Pencil

Directions

Write the parts of the horse next to the arrows.



**Activity
9.5**

Name _____ Date _____ Hour _____

Create a Horse Color Wheel or Chart

Student Materials

Supplies to make a color wheel

Examples:

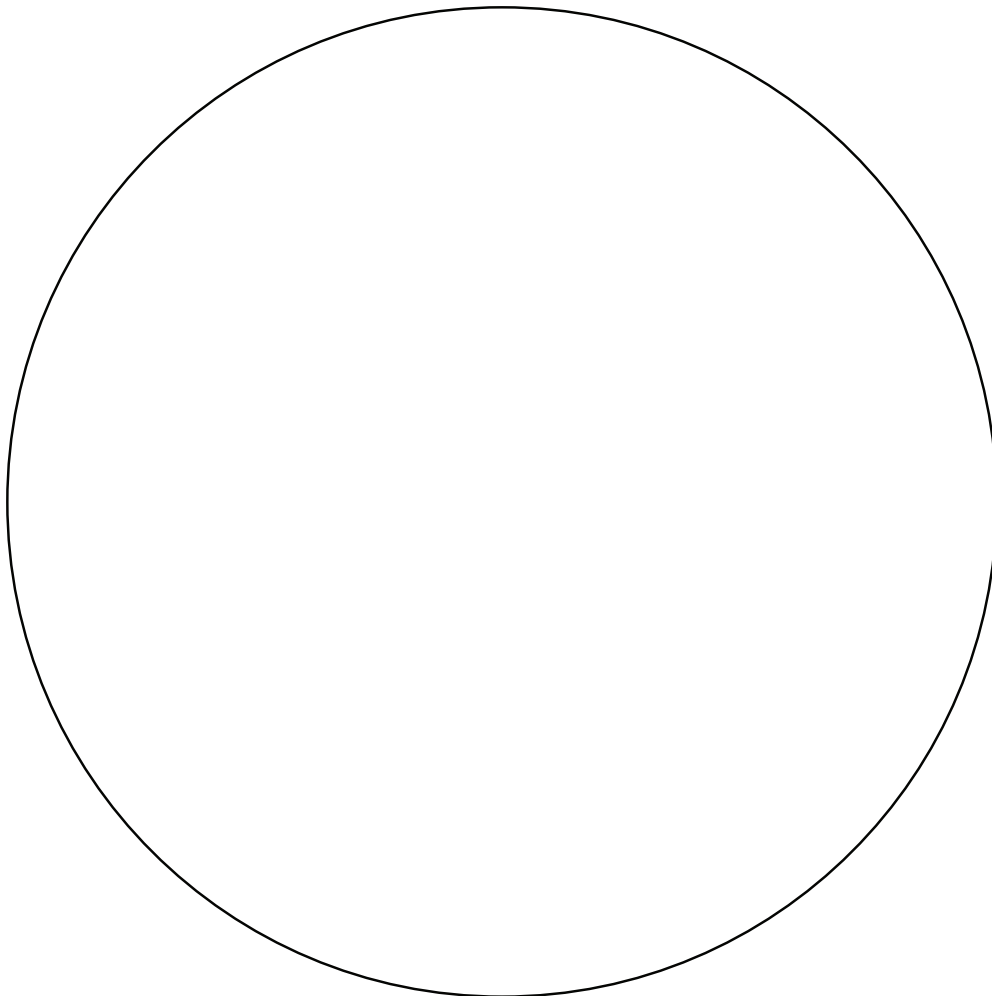
Colored pencils or markers

Paints

Ruler

Directions

Create a horse color wheel that identifies the basic colors of horses. Include the following colors in your color wheel or chart: sorrel/chestnut, bay, brown, black, gray, palomino, buckskin, white, cream, dun, roan, pinto/paint, and Appaloosa. Identify the colors in your color wheel or chart.



Activity
9.6

Name _____ Date _____ Hour _____

Draw Common Head Markings

Student Materials

- Pencil
- Colored pencils
- Markers

Directions

Draw common head markings and write the common head marking in the blank.



**Activity
9.7**

Name _____ Date _____ Hour _____

Draw Common Leg Markings

Student Materials

Pencil
colored pencils
or markers

Directions

Draw common leg markings
and write the common leg
marking in the blank.

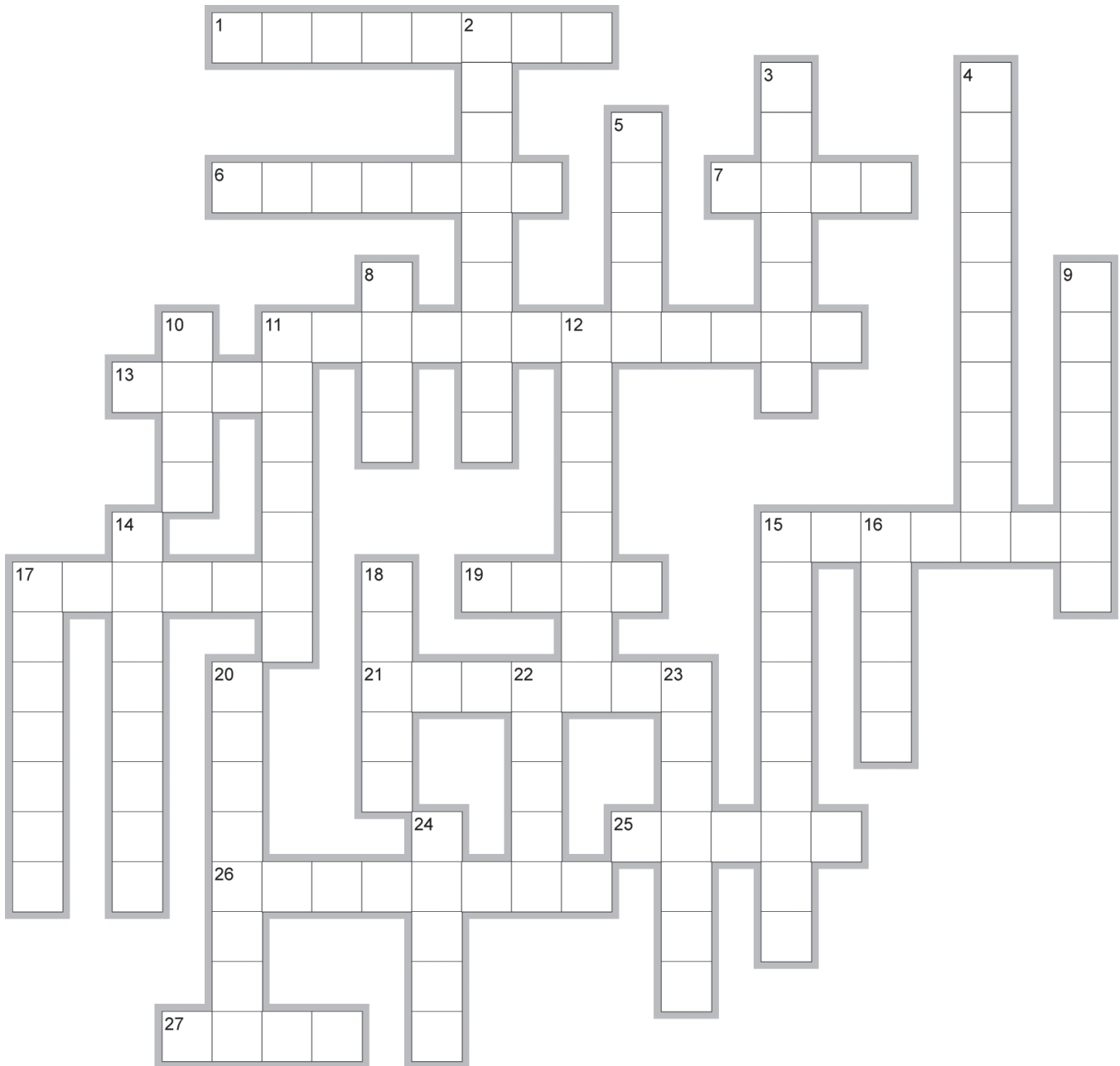




**Activity
9.8**

Name _____ Date _____ Hour _____

Unit Review Crossword



EclipseCrossword.com

Across

1. Popular pony pet
6. Originated in Belgium
7. Female horse over three years old
11. Breed of horse often used in racing
13. Team sport in which riders use mallets to hit a ball
15. Leg marking that includes the horse's entire pastern
17. The founding sire of this breed was a stallion named Figure.
19. Horse within the first year of life
21. Common Appaloosa pattern in which the horse is white all over with dark spots scattered over the body
25. Pattern in which the white originates on the underside of the horse
26. Male horse that has not been castrated
27. Marking between the nostrils

Down

2. Breed with a distinctive spotted coat
3. Appaloosa pattern in which the horse is a dark color with a blanket of white hair over the hips and croup area
4. Draft horse that originated in Scotland
5. Excellent riding for children
8. Color that includes a mixture of white hairs with any other dark color
9. Castrated male horse
10. Male horse younger than three years old
11. Pattern in which the spots are generally regular distinct ovals
12. Games that test a horse and rider's speed and agility
14. Form of English riding that focuses on developing the natural movements of the horse
15. Draft horse that originated in France
16. Narrow face marking between the forehead and nostrils
17. Feral horse that roams wild in the western U.S.
18. Female horse younger than three years old
20. Yellowish or gold body color with black points
22. Any horse that exhibits spotted coat coloring
23. Competitions that involve one or more horses pulling a cart
24. Vertical face marking that extends the length of the face and of medium width