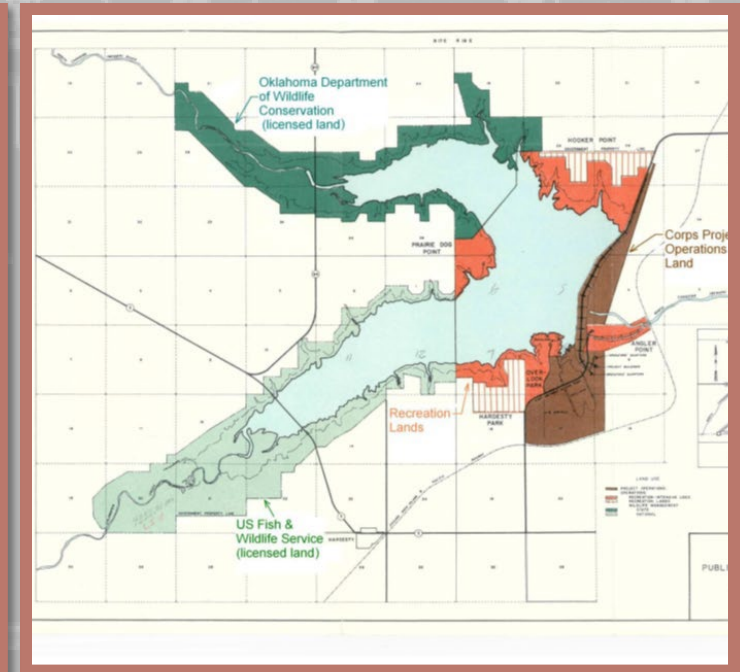


INDIAN COUNTY BUSINESS SUMMIT

09OCT24

District Overview
Tulsa District, US Army Corps of Engineers
Gene Snyman, Business Development



US Army Corps
of Engineers®



USACE SWT Mission/Vision

SWD PRIORITIES: READY, RESPONSIVE, RELEVANT

SWT MISSION:

SWT stewards water resources and delivers infrastructure projects in order to secure our Nation, energize our economy and reduce disaster risk.



SWT Vision:

Trusted People, Strong Partnerships, Quality Projects to serve our communities and our Nation.

Winning = Finishing quality projects, on time and within budget . . . SAFELY!

ENTHUSIASM – INTEGRITY – RESPECT – TEAMWORK - SERVICE



THE TULSA DISTRICT IMPACT



THE TULSA DISTRICT

US Army Corps of Engineers

Mission:

Deliver vital public and military engineering services; partnering in peace and war to strengthen our Nation's security, energize the economy and reduce risks from disasters.

covers 173K SQUARE MILES | **operates in** 3 STATES | KANSAS OKLAHOMA TEXAS

contains 4 MAJOR RIVER BASINS | CANADIAN GRAND NEOSHO ARKANSAS RED RIVER | **manages** 38 PROJECTS | 50 DURING FLOODING

maintains 9ft MKARNS NAVIGATION CHANNEL DEPTH | **RIVER MILES** 140

prevented 29.6B FLOOD DAMAGE PREVENTED

within district 39 FEDERALLY RECOGNIZED NATIVE AMERICAN TRIBES

executes \$600M+ FEDERAL BUDGET (FY 2023)

employs 779 people | 30% veterans

missions 11
Emergency Operations & Disaster Response
Regulatory Navigation Water Supply
Hydropower Civil Works Military Program
Dam Safety Flood Risk Management
Environmental Stewardship Recreation

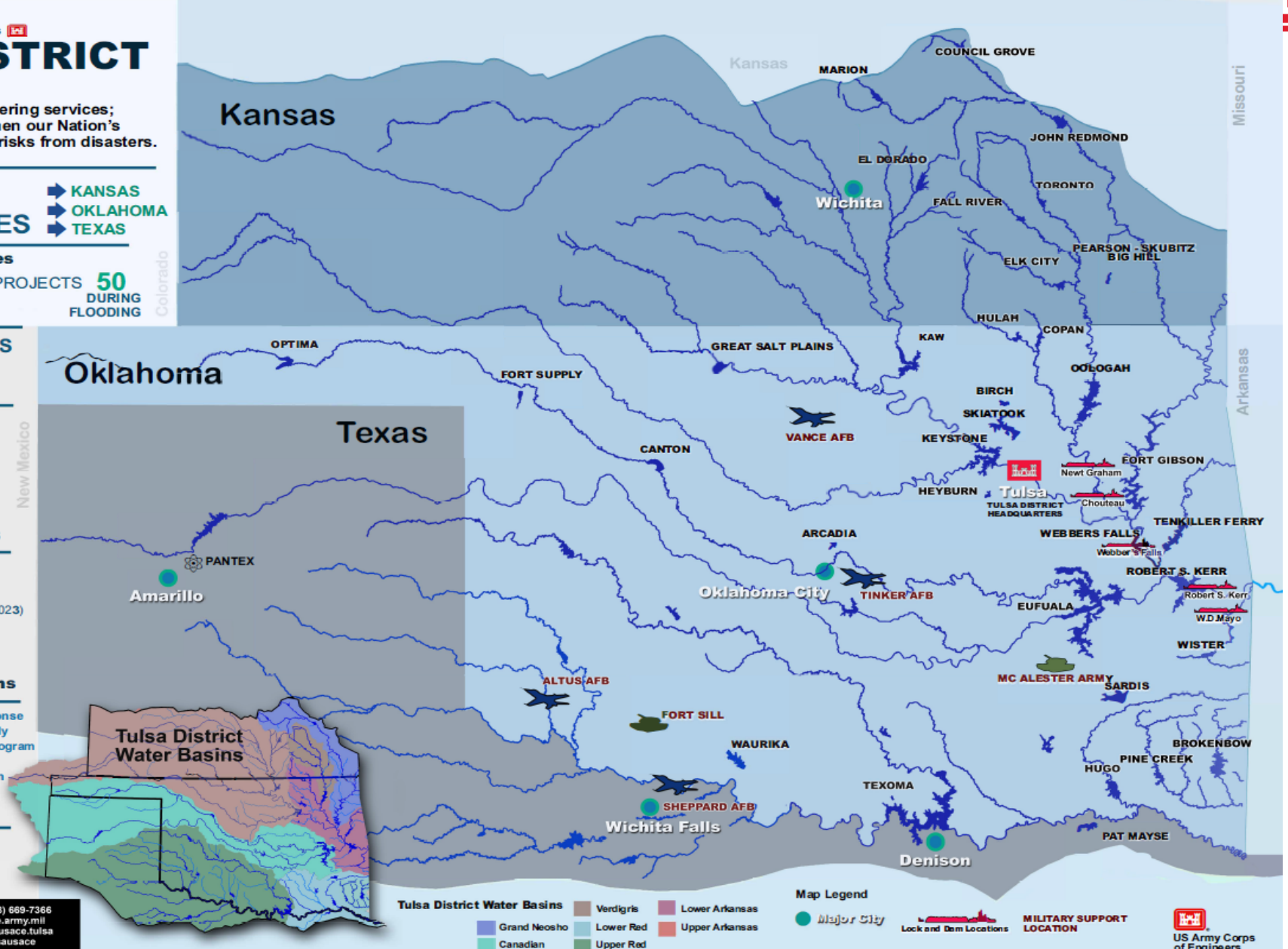
Tulsa District creates more than \$787,000,000 in economic benefits for the region

COL Tim Hudson
Commander Tulsa District



U.S. Army Corps of Engineers
Tulsa District
2488 E 81st Street
Tulsa, Oklahoma 74137

Contact us (918) 669-7366
www.swt.usace.army.mil
facebook.com/usace.tulsa
twitter.com/tulsausace



Tulsa District Water Basins
Grand Neosho Lower Red Upper Arkansas
Canadian Upper Red

Map Legend

Major City

Lock and Dam Locations

MILITARY SUPPORT LOCATION

US Army Corps of Engineers



Initiatives – KC-46



Tinker KC-46 Campus

Over \$750 million in new construction

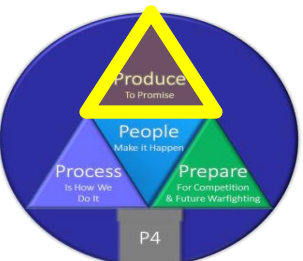
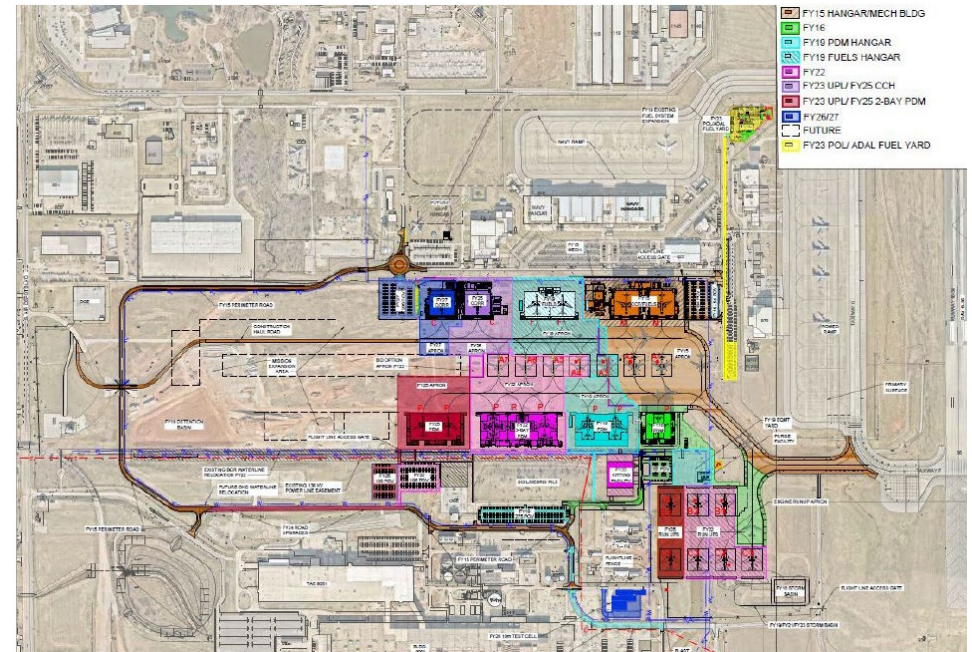
7 hangars / 14 docks planned

4 hangars / 7 docks completed and in use

1 hangar / 3 docks under construction

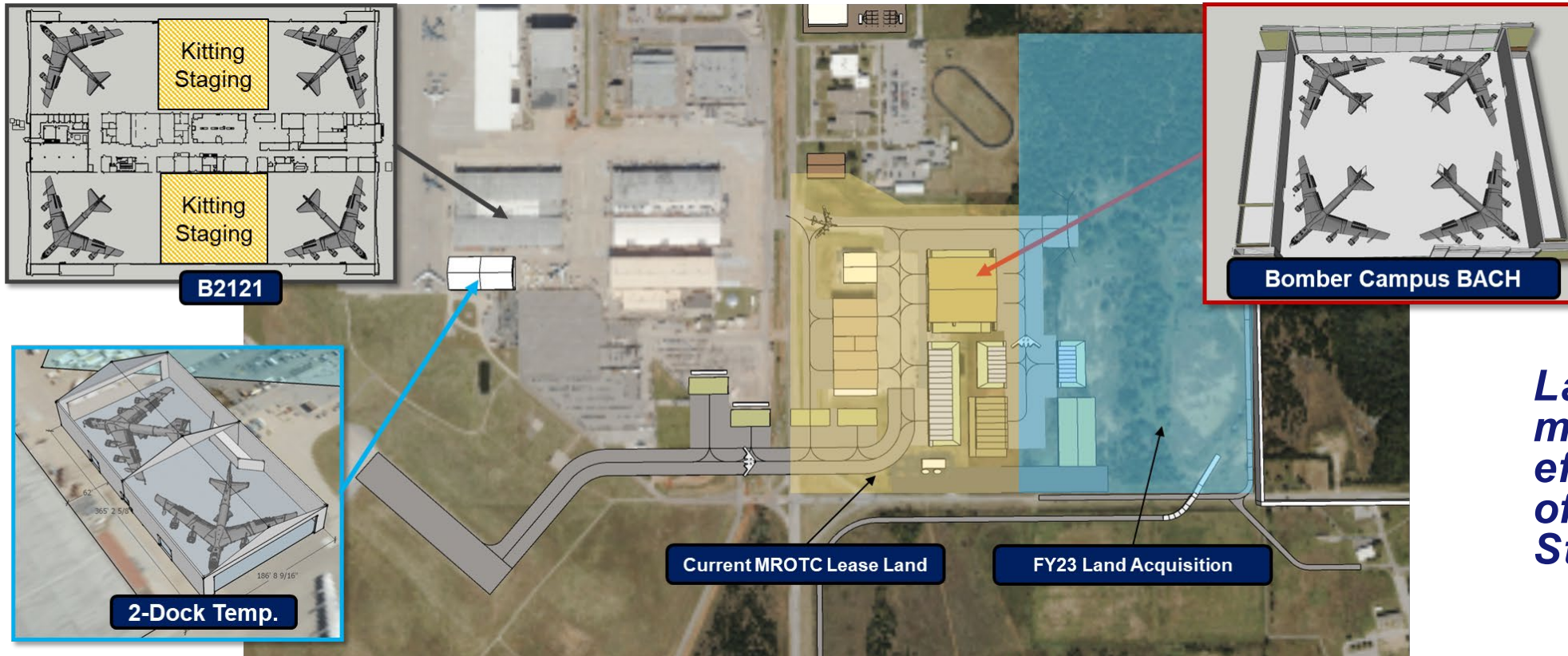
2 hangars / 3 docks will award Fall 2024

1 hangar / 1 dock future project



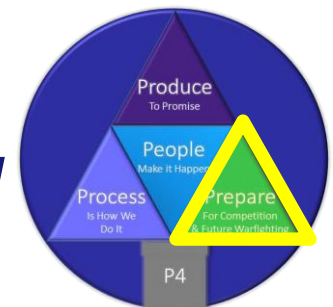


Initiatives - B-52 Modernization



Largest modernization effort in the history of the B-52 Stratofortress

Agile Common Hanger is a common configuration capable of accommodating multiple weapon systems: 4 B-52s, 4 B-21s, 2 C-17s, 4 KC-135s, or 24 F-16s for depot maintenance without “trapping” aircraft in flow





Initiatives – 552d Modernization



E-3G Sentry (AWACS)

- ***Tinker icon since 1977***
- ***Boeing 707 last flown commercially in 1983***
- ***Divest began April 2023***



E-7A Wedgetail

- ***Official announcement of E-7 basing forthcoming***
- ***Contract awarded to Boeing in Mar 2023***
- ***Currently flown by Royal Australian Air Forces and UK Royal Air Force***



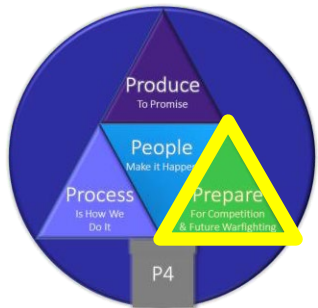


Initiatives - B-21



B-21 Raider At a Glance

- Produced by Northrup Grumman
- Tinker chosen as organic source of repair
- First flight projected sometime in 2023
- JOBS, JOBS, JOBS!





MILCON CURRENT PROGRAMS

AIR EDUCATION & TRAINING COMMAND (AETC)

Mission:

- Vance AFB
- Sheppard AFB
- Altus AFB
- Find, Recruit, and Train Airmen

USACE SUPPORT

- MILCON Projects
- SRM Projects
- Programmatic Scale
- Planning/Programming



Program Support

- Training Centers & Simulator Facilities
- Entry Control Points/Gates
- Roadway Improvements
- Child Development Center
- Airfield Pavement
- Hangars & Renovations
- Utility Infrastructure (water, wastewater, power)





MILCON CURRENT PROGRAMS



FORT SILL

Mission:

- The Fires Center of Excellence
- Trains, educates and develops Soldiers and leaders
- Sustains and provides a fires force

USACE SUPPORT

- MILCON Projects
- SRM Projects
- Programmatic Scale
- Planning/Programming



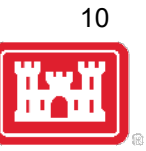
Program Support

- Barracks
- Facility Renovation
- Dining Facilities
- Roadway improvements
- Ranges
- Training Facilities





SWT CONSTRUCTION ACCESS



- Experience, Not Capability
- Bid on Competitive Military/Vertical “C” Contracts and/or Indefinite Delivery “D” Contract (IDC)
 - As Single Prime - One or more, relevant (**scope, magnitude, recent**, location, customer) primed projects
 - As SB JV – Combined experience counts, one of the partners must have relevant experience
 - As MP JV - Advantage
- Subcontract – grow and build reputation
- Win local installation work – more direct award options
- Win small (under Simplified Acquisition Procedures) civil work – experience less important
- Self-Perform
- Meet Area Engineering Staff
- 8(a)s – POCA contracts, SRM from other installations ok
- ANC/HNO/Tribal – must build relationship, seek competitive work, respond to Sources Sought
- SAME networking
- Tulsa seeking invested, long-term partners (who are your top three districts?)



SUSTAINMENT, RENOVATION, MODERNIZATION



- Access

- Most SRM requirements awarded through existing IDIQs
- Reputation gained through local experience important
- Build experience
 - Teaming and Subcontracting
 - Other federal and installation contracts
 - Civil-Works Projects
- 8a, HUBzone, WOSB, SDVOSB designation; discriminators that tip the scale

- Future Work

- Total FY24 Expected SRM **\$200M (Ft Sill/ Tinker)**
- McAlister AAP working a modernization program estimated at **\$50M** per year in projects through existing contract tools and new TBD tools, in addition to upcoming MILCON projects
- Tinker AFB SRM program focused on industrial process



SWT AE ACCESS



- Experience, Not Capability
- Bid on Competitive IDCs
 - As Single Prime – Several, very relevant (**scope, magnitude, recent**, location, customer) primed projects
 - As SB JV – Combined experience counts, both partners must have very relevant experience
 - As MP JV - Advantage
 - As member of a similarly situated SB team to support prime's 50% Limitation on Subcontracting requirement
- Become the design agent for a well-known local construction prime
- Get on some other team – grow and build reputation, Large Businesses need you!
- Win other district work – especially withing SWD which is available for SWT to borrow (trade)
- Meet District Engineering Staff –Shawn Painter's team.
- SAME networking – 3-4 years until next AE SVC contract!



CIVIL WORKS TRENDS



- Civil Works Budget is unpredictable
- Trending toward more life cycle projects
 - Longer lead time for design
 - Follow-on year for Construction

- Current program is 2-3 times regular Budget
 - Larger Projects for late FY23-FY24:
 - Fort Gibson Bridge Replacement
 - Tenkiller Bridge Replacement
 - McClellan-Kerr Arkansas River Navigation System (MKARNS)
 - » ‘12 foot channel’ deepening
 - » \$95M+ in Gate Repairs
 - Tulsa West Tulsa Levee Repairs (FY24)
 - California Program (Ashley Allinder – PGM)
 - » Contract Advertisement late FY23-early FY24





CIVIL WORKS PROGRAM



FY23

- Repair Stilling Basin at Webbers Falls Lock and Dam - \$10-20M

FY24

- Replace Spillway Bridge at Fort Gibson Lake, OK - \$50-60M
- Replace Spillway Bridge at Tenkiller Lake, OK - \$20-30M
- MKARNS Repair Tainter Valves - \$5-10M
- Construct New Bulkhead at Hugo Lake, OK - \$5-10M
- Repair Tainter Gate Trunions at Marion Lake, KS – under \$5M
- Repair Tainter Gates at Wister Lake, OK – under \$5M
- Repair Stilling Basin at Fort Gibson Lake, OK – under \$5M
- Repair Newt Graham Lock and Dam Tainter Gates - \$10-15M
- Repair Park Roads at Waurika Lake, OK – under \$5M
- Repair Auxiliary Spillway Channel at Oologah Lake, OK – under \$5M

FY25

- Construct New Dam Spillway at Prado Lake, CA - \$600-650M



SWT ENVIRONMENTAL ACCESS

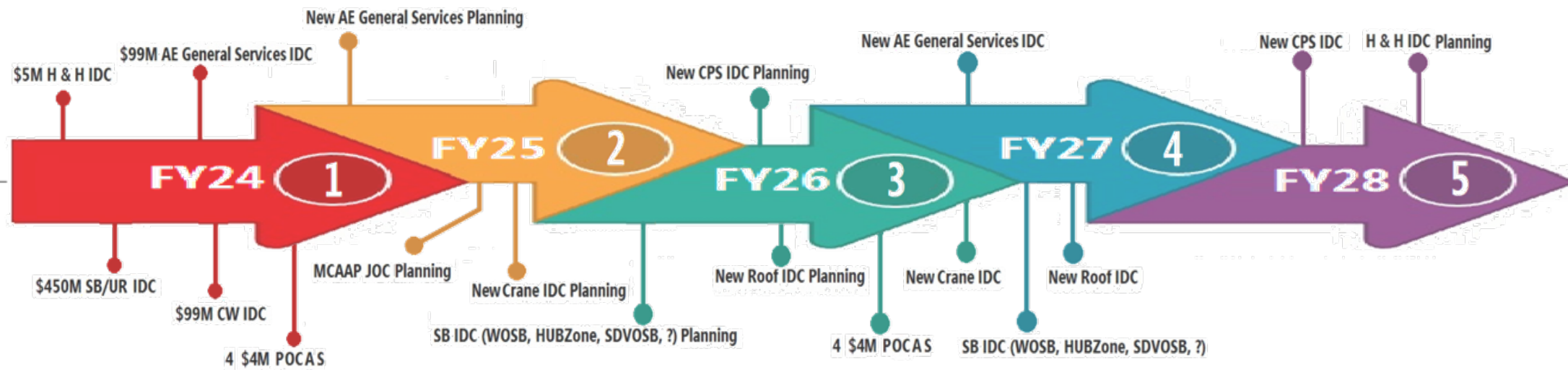


- Experience, Not Capability
- Bid on Competitive IDCs
 - As Single Prime – Several, very relevant (**scope, magnitude, recent**, location, customer) primed projects
 - As SB JV – Combined experience counts, both partners must have very relevant experience
 - As MP JV - Advantage
 - As member of a similarly situated SB team to support prime's 50% Limitation on Subcontracting requirement
- Get on some other team – grow and build reputation, Large Businesses need you!
- Win other district work – especially within SWD which is available for SWT to borrow (trade)
- Meet Regional Planning and Environmental Center (RPEC) Staff
- Connect with Military Installation Environmental managers (AFCEC)
- SAME networking – New \$150M NEPA and new \$150 PFAS contracts planned to advertise 3QFY25.



5 YEAR ACQUISITION PLANNING

5 Year Graphical Acquisition Plan



↑
AE
CONST.
↓



Questions?

Gene Snyman gene.snyman@usace.army.mil
918-669-7010

Forecast Push Distro
CESWT-OSBP@usace.army.mil