



OKLAHOMA
CareerTech

System Information FY23





Executive Summary

VISION

Securing Oklahoma's future by developing a world-class workforce

MISSION

Preparing Oklahomans to succeed in the workplace, in education and in life





Goals

➤ **Educational attainment**

Provide Oklahomans with the skills and abilities needed to enter the workforce and postsecondary education.

➤ **Career awareness and planning**

Assure Oklahomans have the knowledge and skills to make informed career choices and be better equipped to enter the workforce.

➤ **Business/educational partnerships**

Collaborate with key business and educational partnerships to expand economic development and improve education experiences for students, including diverse perspectives and backgrounds.

➤ **Agency operations and field support**

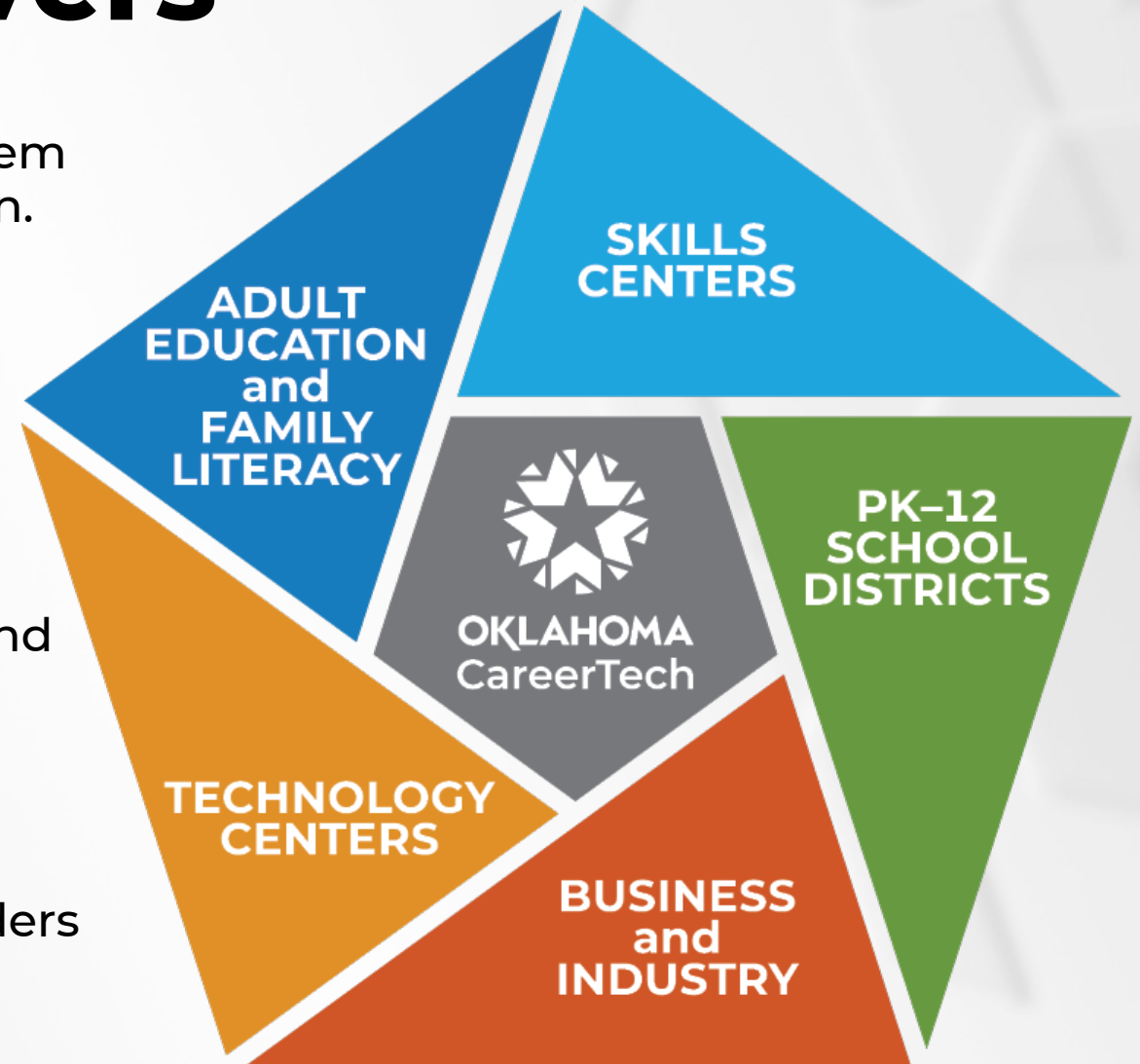
Ensure agency operations and services are effective and efficient in meeting stakeholders' needs and secure resources to maximize our mission.





CareerTech Delivers

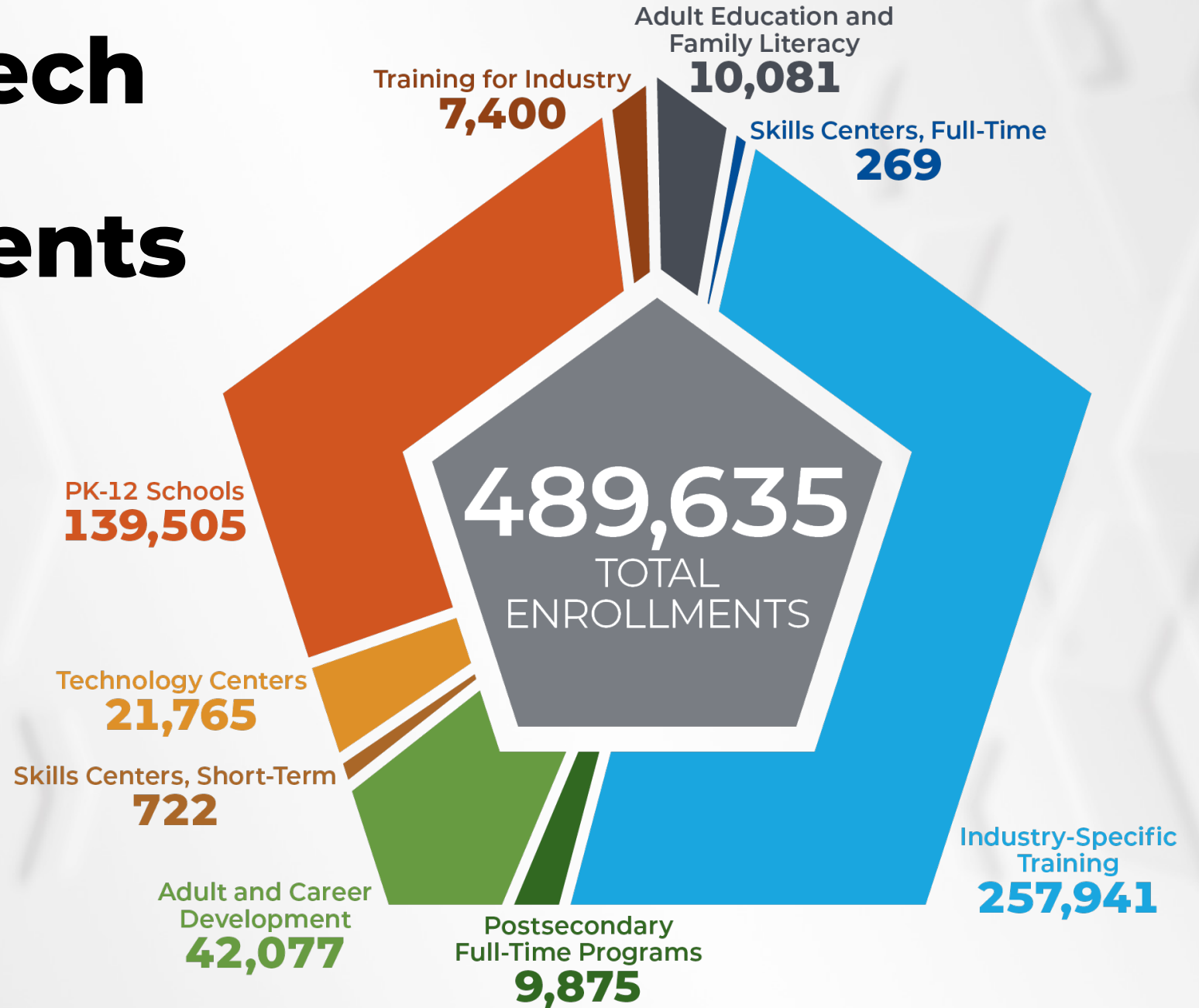
- One of the strengths of the CareerTech System is its accessibility to almost every Oklahoman.
- CareerTech offerings in **397** PK–12 school districts and **1,474** teachers
- **29** technology center districts with **60** campuses and **1,305** teachers
- Business and industry training attracts new industry and helps existing businesses expand and prosper with **7,183** companies served
- **16** skills center sites for inmates and juvenile offenders with **40** teachers
- **32** adult education and family literacy providers at **118** sites





CareerTech System Enrollments

FY23



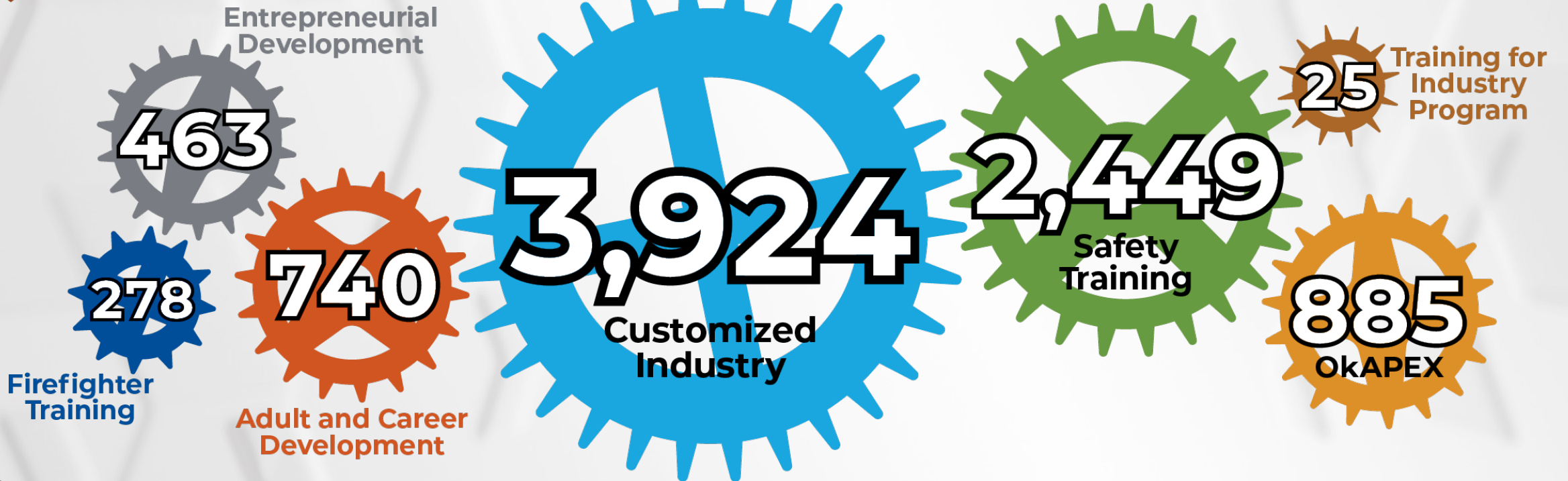


Business and Industry

BUSINESSES SERVED

Total businesses served, duplicated in some categories

» 8,764





Skills Centers

CareerTech Skills Centers specialize in the delivery of career and technology education to inmates under the supervision of the Oklahoma Department of Corrections and juveniles under the supervision of the Oklahoma Office of Juvenile Affairs.

991 SKILLS CENTERS PROGRAM COMPLETERS



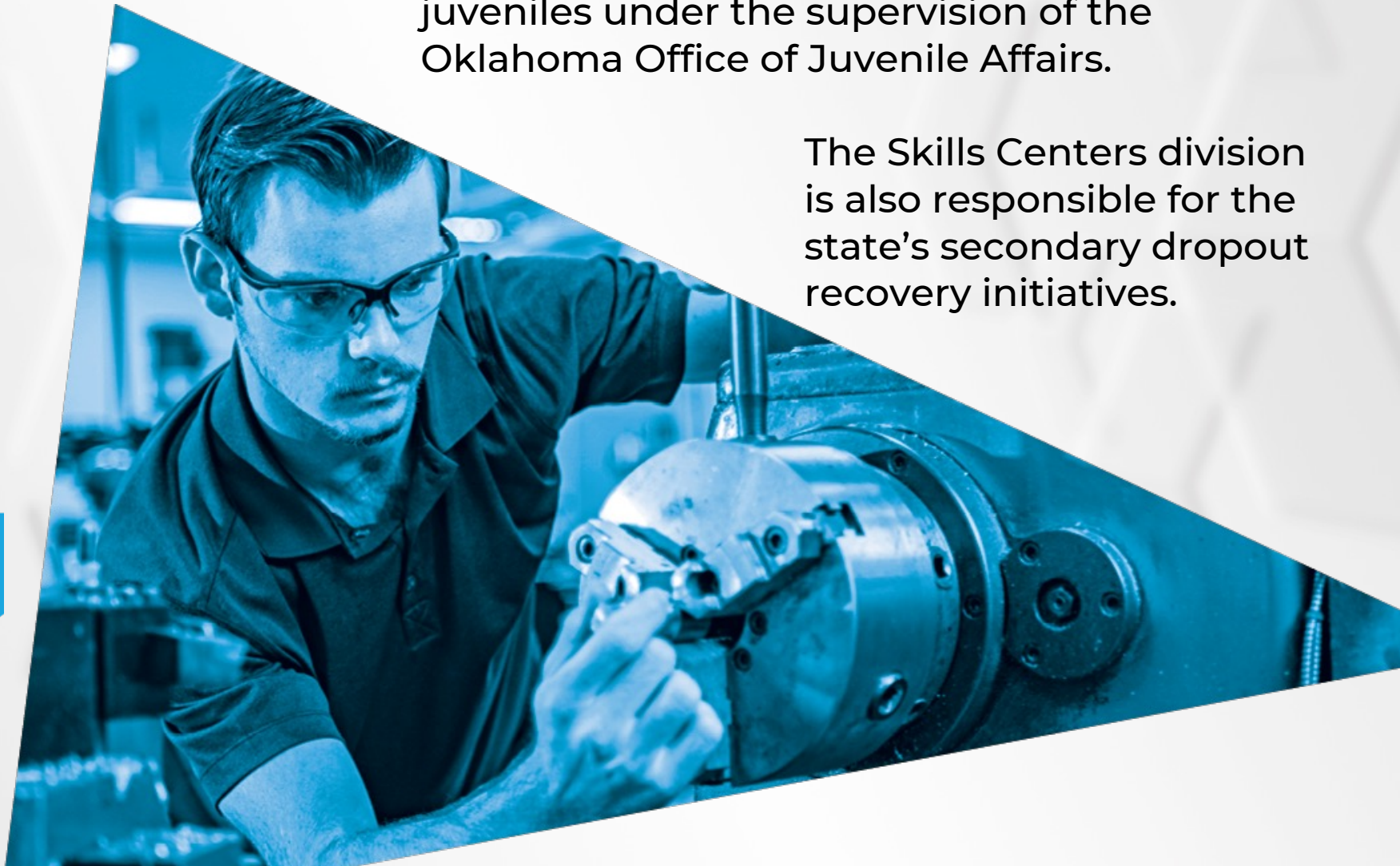
Students served, short-term

722



Completed, full-time

269



The Skills Centers division is also responsible for the state's secondary dropout recovery initiatives.



Dropout Recovery

CareerTech's dropout recovery program helps students who drop out of high school earn their diplomas and gain skills to enter the workforce.

- ▶ Pioneer Technology Center
- ▶ Great Plains Technology Center
- ▶ Central Technology Center
- ▶ Tulsa Technology Center
- ▶ Canadian Valley Technology Center
- ▶ Francis Tuttle Technology Center
- ▶ Metro Technology Centers
- ▶ Mid-Del Technology Center

637 << students: 357 females, 280 males

311 << earned high school diplomas

108 << obtained employment

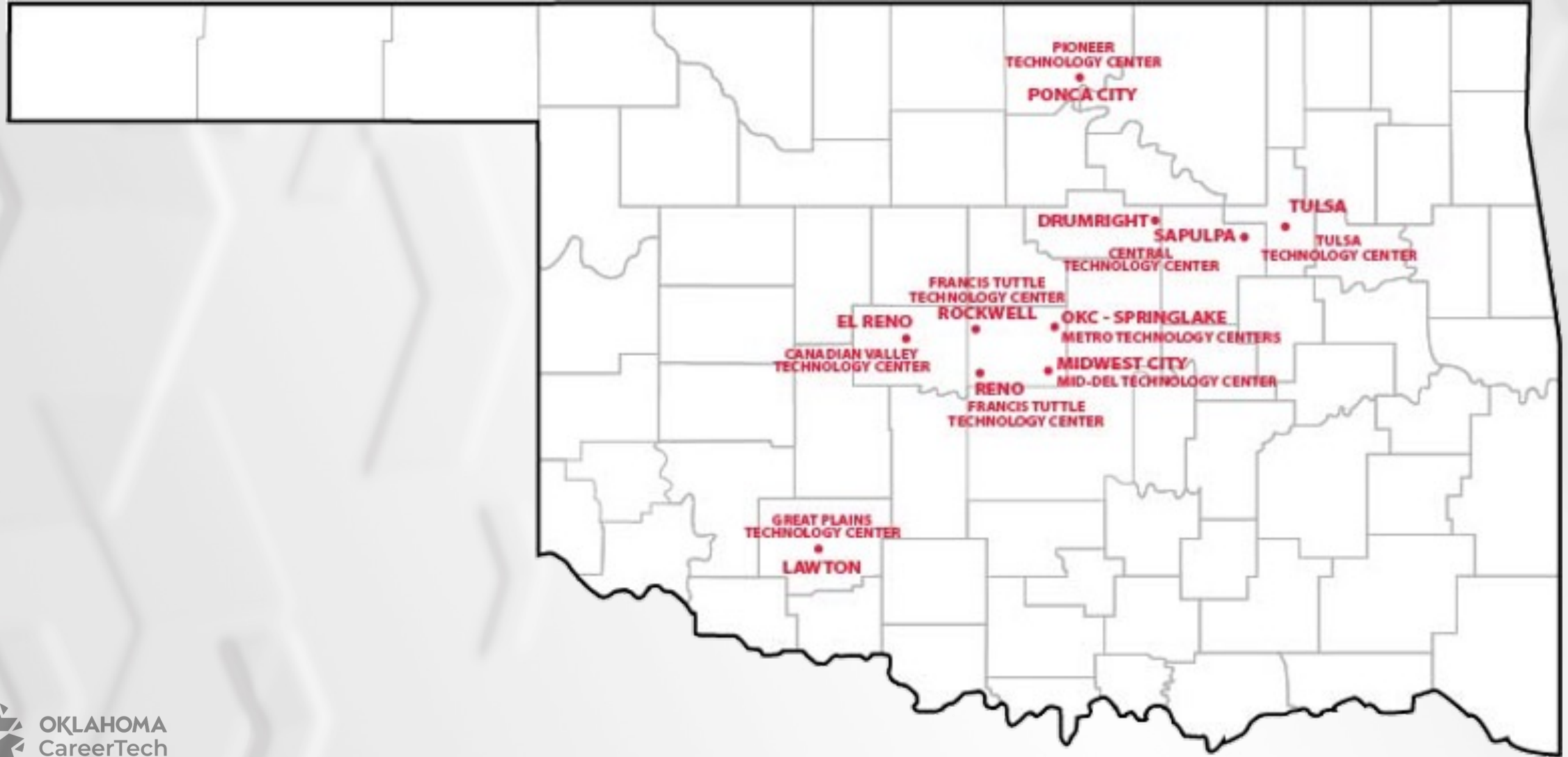
9 << entered the military

105 << enrolled in postsecondary education





Dropout Recovery Program Locations





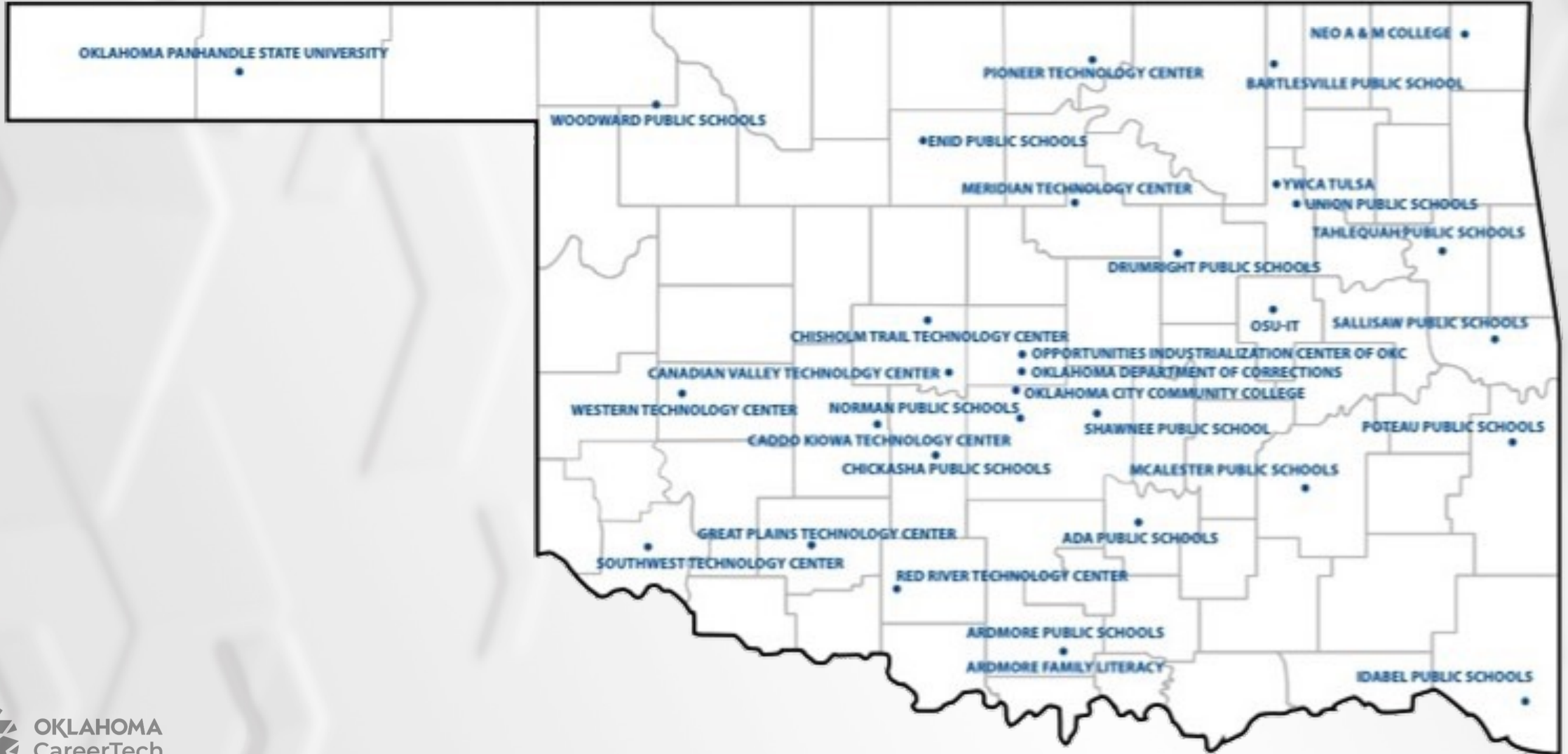
Adult Education and Family Literacy

Oklahomans are provided instruction annually through CareerTech's adult education and family literacy programs.

- **32** AEFL providers at **118** sites
- **10,081** total students served
- **6,812** students working on high school equivalency
- **2,219** correctional center students
- **193** english literacy/ civics students



AEFL Program Locations





PK-12 Schools

CareerTech programs are available to students in fifth through 12th grades in Oklahoma's PK-12 schools.

- **32% (131,792)** of Oklahoma 5th-12th grade students were enrolled in CareerTech classes.
- **42% (86,414)** of Oklahoma 9th-12th grade students were enrolled in CareerTech classes.
- There were **131,792** secondary CareerTech enrollments (some students may take more than one offering).





PK-12 Schools

- Provide a hands-on learning environment
- Integrate rigorous academics
- Provide opportunities to explore and experience potential careers
- Provide knowledge and skill development in multiple career pathways

TEACHERS IN COMPREHENSIVE SCHOOLS FY23



Agricultural Education

482
Teachers

29,192
Enrollments



Business and Information Technology Ed

245
Teachers

24,581
Enrollments



Family and Consumer Sciences Ed

372
Teachers

39,122
Enrollments



Health Careers Education

14
Teachers

822
Enrollments



Marketing Education

29
Teachers

2,605
Enrollments



Science, Tech, Engineering and Math

307
Teachers

41,405
Enrollments



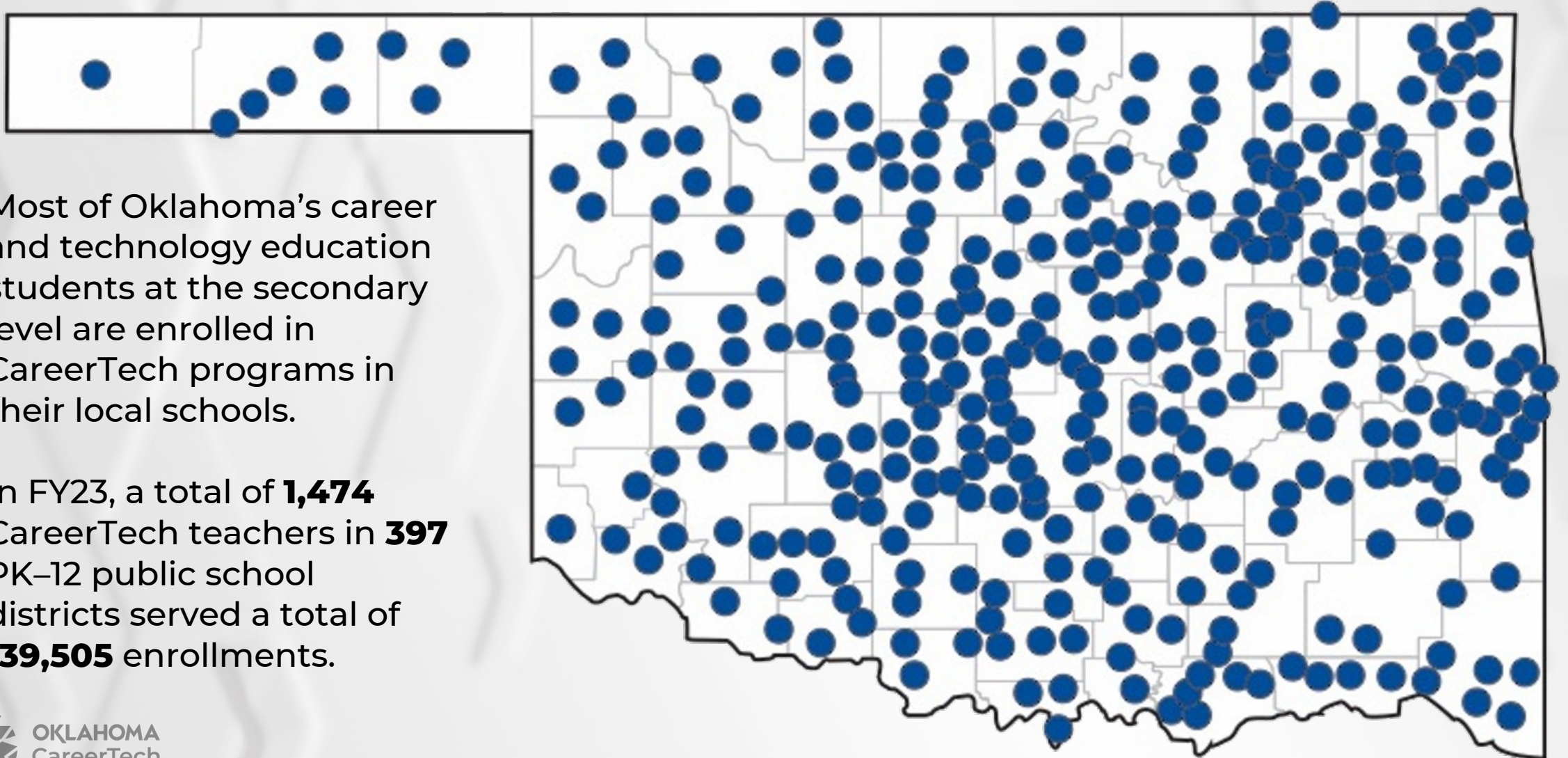
Trade and Industrial Education

25
Teachers

1,778
Enrollments



PK-12 Schools



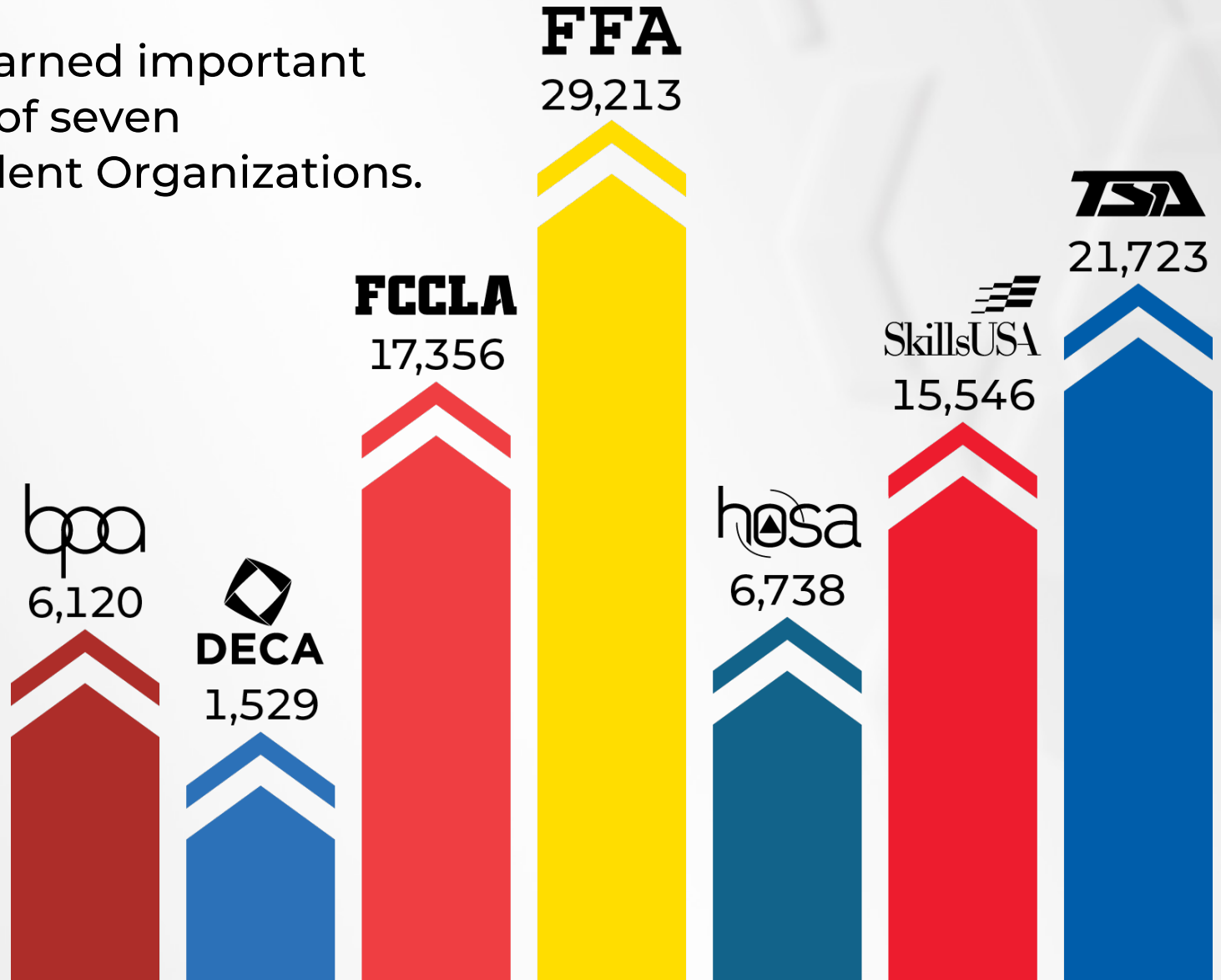
Most of Oklahoma's career and technology education students at the secondary level are enrolled in CareerTech programs in their local schools.

In FY23, a total of **1,474** CareerTech teachers in **397** PK-12 public school districts served a total of **139,505** enrollments.



CareerTech Student Organizations

In FY23, **98,225** students learned important leadership skills as members of seven co-curricular CareerTech Student Organizations.



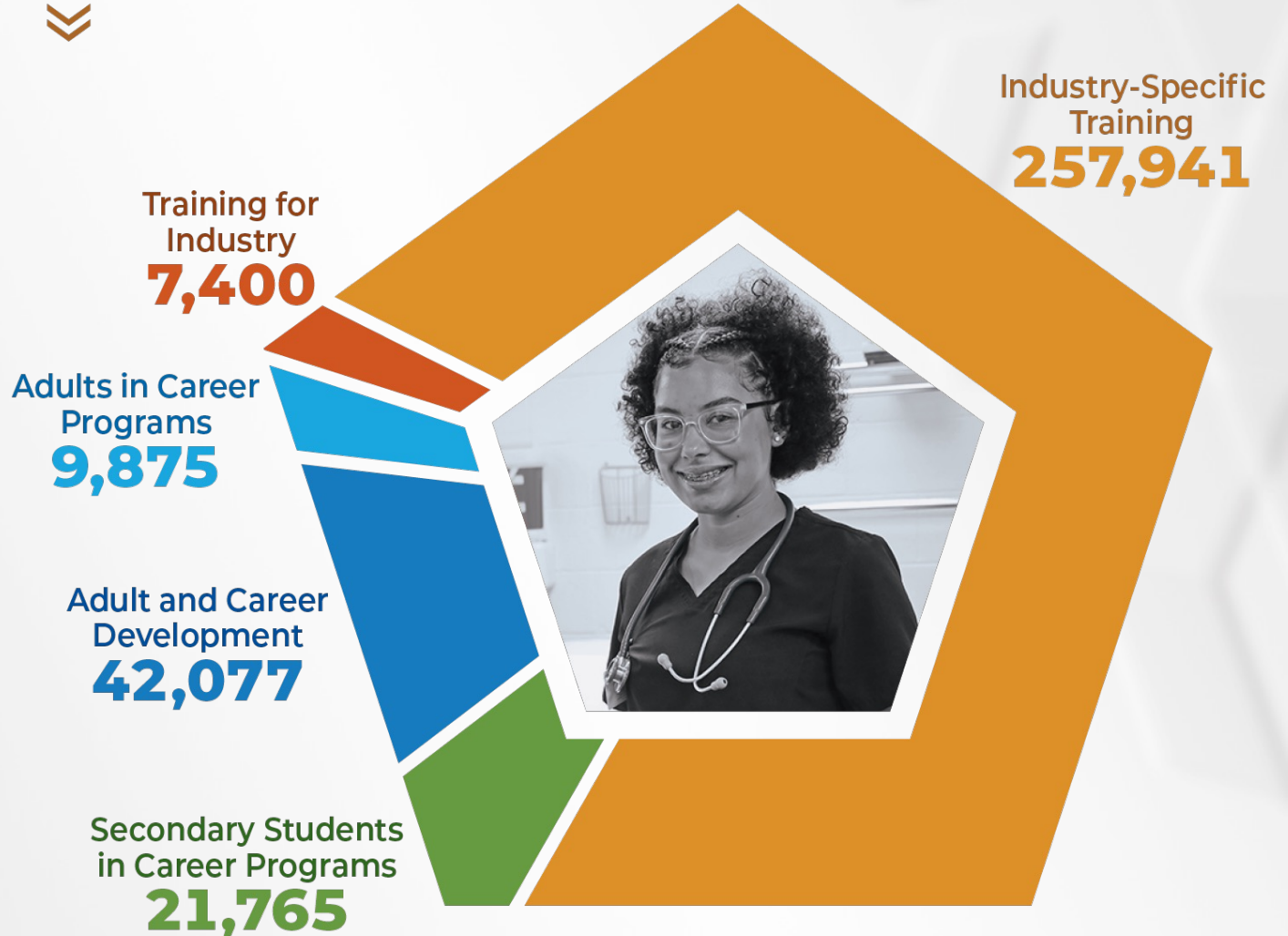


Technology Centers

In FY23, technology center districts operated on **60** campuses across the state, making CareerTech training and services accessible to most Oklahomans.

High school student enrollments in technology centers totaled **21,765**. Adult enrollments in career programs, industry-specific training, adult and career development and the Training for Industry Program were **317,293**.

TECHNOLOGY CENTERS ENROLLMENT FY23





Technology Centers



ENROLLMENT BY CAREER CLUSTER FY23



Agriculture, Food and Natural Resources	101
Architecture and Construction	3,240
Arts, Audio/Video Technology and Communications	1,077
Business Management and Administration	1,295
Education and Training	128
Finance	228
Health Science	6,661
Hospitality and Tourism	852
Human Services	2,409
Information Technology	2,949
Law, Public Safety, Corrections and Security	778
Manufacturing	3,308
Marketing	289
Science, Technology, Engineering and Mathematics	3,934
Transportation, Distribution and Logistics	4,307
Energy and Power	84



31,640



Technology Centers and Districts





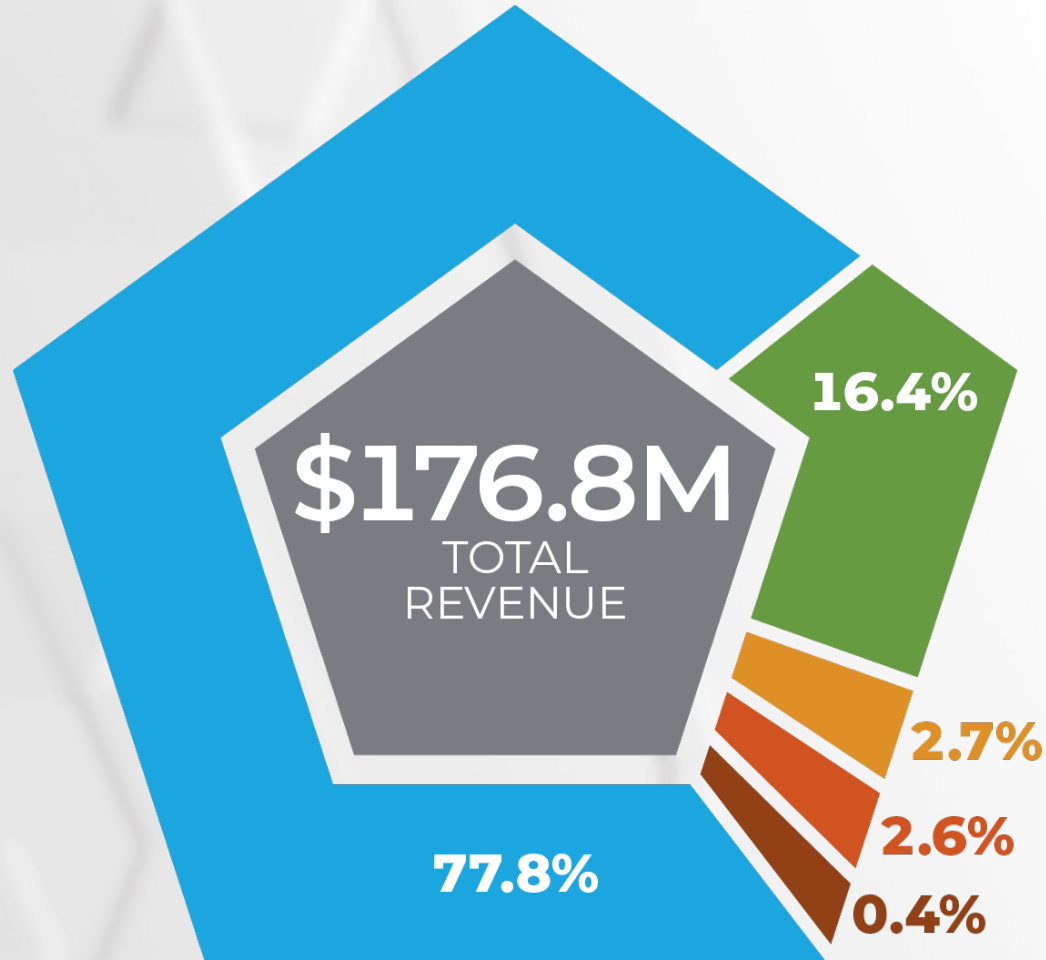
Did you know...

- Oklahoma CareerTech annual enrollments totaled **489,635**.
- **32% (131,792)** of Oklahoma 5th–12th grade students were enrolled in CareerTech classes.
- **42% (86,414)** of Oklahoma 9th–12th grade students were enrolled in CareerTech classes.
- More than **98,000** students learned important leadership skills as members of CareerTech student organizations.
- CareerTech helped **7,183** Oklahoma businesses increase sales, improve productivity, reduce costs and expand operations.
- Through **991** program completions, Oklahoma CareerTech skills centers offered specialized training to adult and juvenile offenders.
- Student placement in FY22 was **94%** (continuing education, employed and military).
- Oklahoma CareerTech students earned **22,520** industry-endorsed certificates in FY22.





ODCTE Fiscal Overview FY23



AGENCY REVENUE

Sources of Revenue from All Funding Sources
(FY23 Actual)

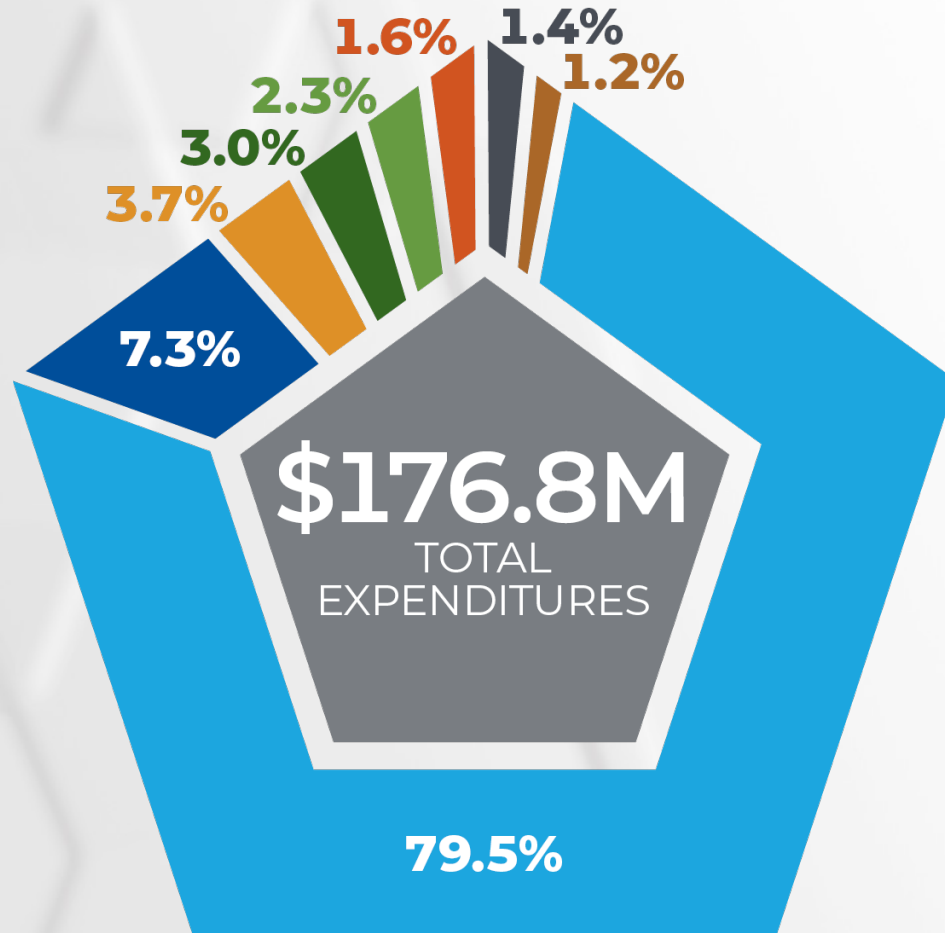


State – General	\$137,602,932
Federal	28,984,530
Revolving *	4,842,552
State – Lottery	4,662,543
Federal – ARPA	671,494
Total	\$176,764,051

* Includes Agency Special Account



ODCTE Fiscal Overview FY23



AGENCY EXPENDITURES

Expenditures by Activity from All Funding Sources
(FY23 Actual)



Educational Attainment	\$140,470,687
Student and Stakeholder Support	12,815,776
Customized Training and Consulting	6,585,947
Dropout Recovery/Youth Offender/Skills Centers	5,327,609
Information Technology	4,091,213
Administration	2,766,604
Curriculum, Assessment and Digital Delivery	2,530,153
Payments in Process as of June 30, 2023	2,176,062
Total	\$176,764,051



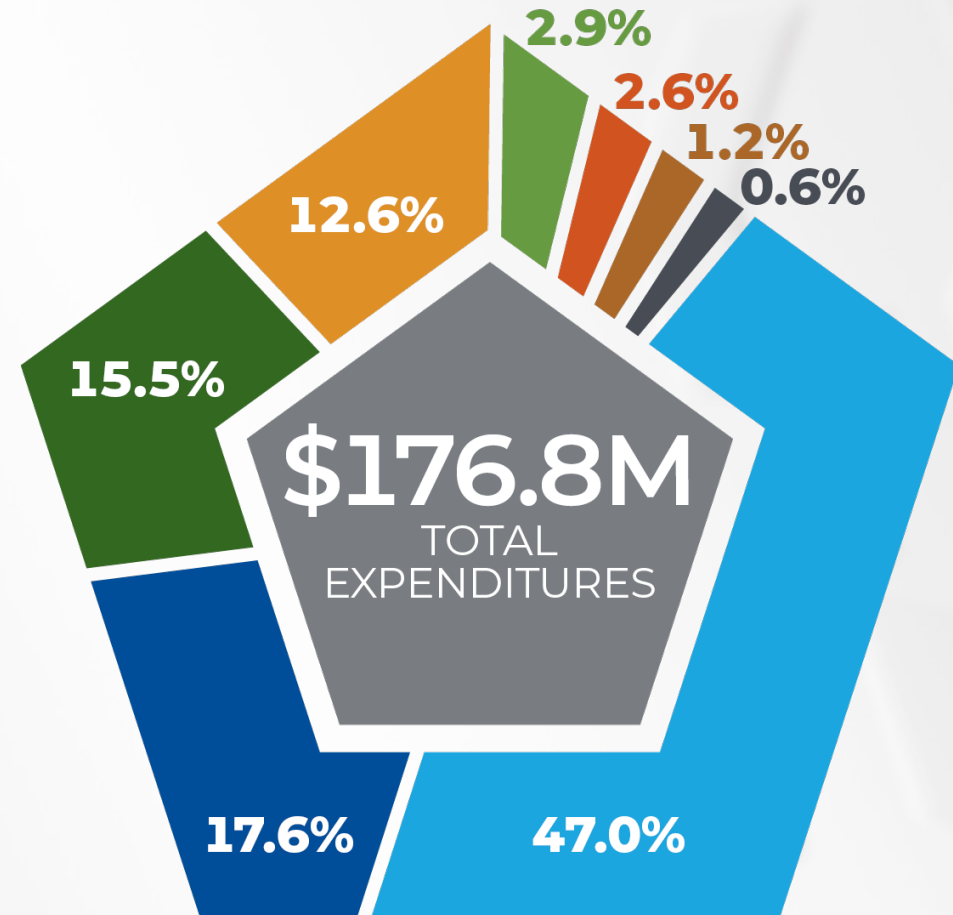
ODCTE Fiscal Overview FY23

AGENCY EXPENDITURES

Expenditures by Service Delivery from All Funding Sources
(FY23 Actual)



Technology Centers (Operations)	\$83,054,595
PK-12 Schools	31,164,084
Technology Centers (Health Benefit Allowance)	27,327,462
Agency	22,250,302
Skills Centers	5,115,110
Colleges	4,628,422
Payments in Process as of June 30, 2023	2,176,062
Other	1,048,014
Total	\$176,764,051





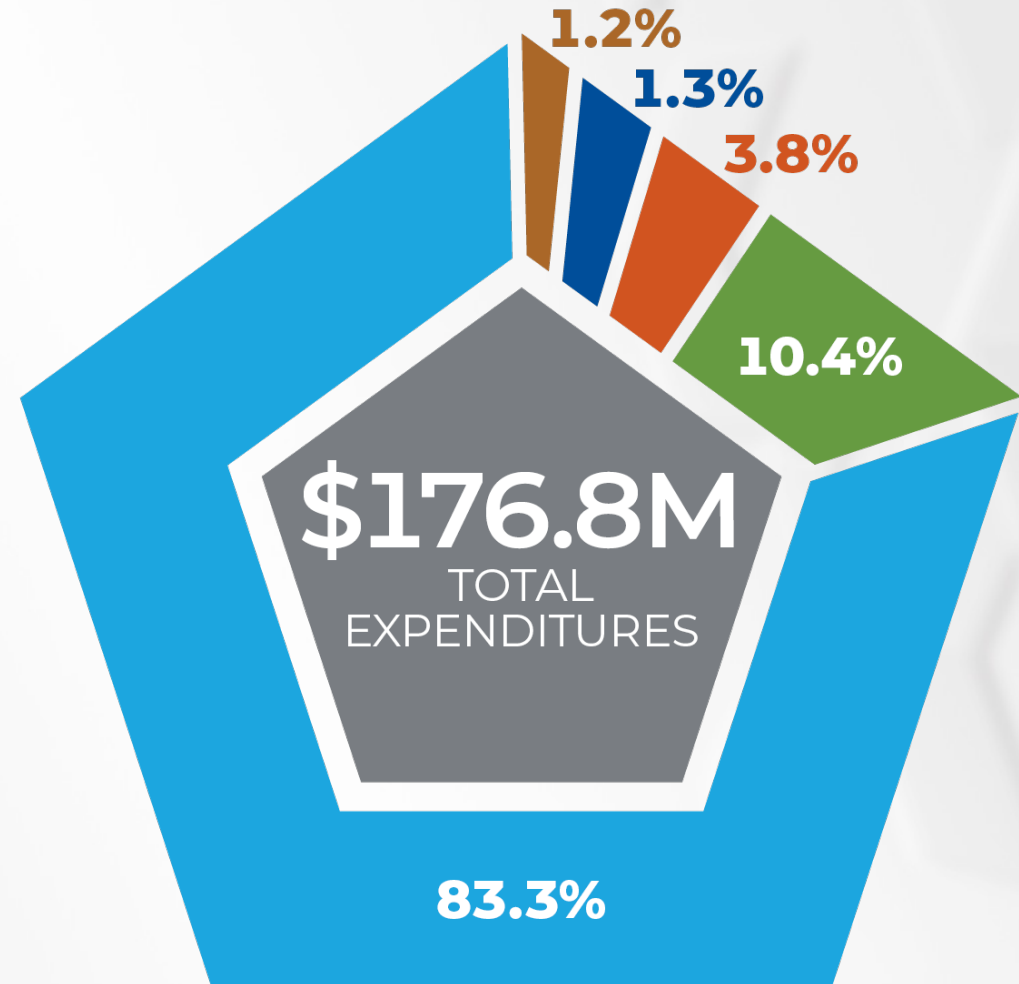
ODCTE Fiscal Overview FY23

AGENCY EXPENDITURES

Expenditures by Category from All Funding Sources
(FY23 Actual)



Pass Through to Schools	\$147,222,577
Personnel Services	18,337,735
Operating Expenses	6,706,554
Professional Services	2,321,123
Payments in Process as of June 30, 2023	2,176,062
Total	\$176,764,051



Thank you



OKLAHOMA
CareerTech