

SURVEY DATA SHEETS

SURVEY CONTROL DATA

1. POSITIONAL CONTROL:

- A. POSITIONAL CONTROL FOR THIS SURVEY IS THE NGS OKLAHOMA STATE PLANE COORDINATE SYSTEM, NAD83 (2011), LAMBERT PROJECTION (SOUTH ZONE).
- B. ACCURACY - THE POSITIONAL CONTROLS FOR THIS SURVEY MEETS OR EXCEEDS THE FOLLOWING ACCURACY CRITERIA:
1. NETWORK ACCURACY: 0.10 FOOT
 2. LOCAL ACCURACY: 0.05 FOOT

2. BEARINGS:

THE BEARINGS SHOWN HEREIN OR HEREON ARE GRID BEARINGS DERIVED FROM THE NGS OKLAHOMA STATE PLANE COORDINATE SYSTEM AND ARE NOT ASTRONOMICAL. THE ANGLE OF VARIANCE BETWEEN GRID NORTH (GN) AND THE ASTRONOMICAL TRUE NORTH (TN) IS DEPICTED DIAGRAMMATICALLY.

3. VERTICAL CONTROLS:

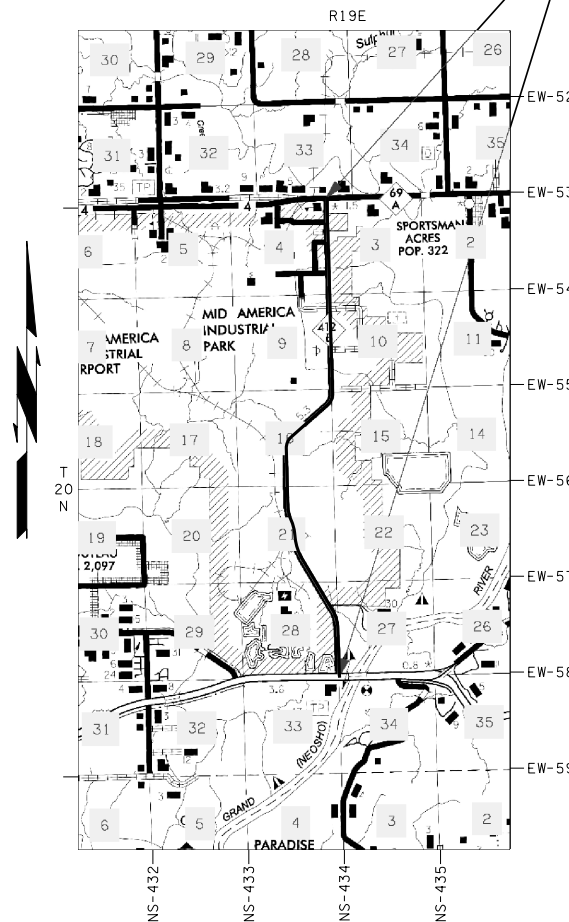
- A. LEVEL DATUM IS NAVD 88 FROM STATIC GPS.
- B. ACCURACY - VERTICAL CONTROL FOR THIS SURVEY MEETS OR EXCEEDS THE FOLLOWING ACCURACY CRITERIA:
1. NETWORK ACCURACY (FROM GPS OR LEVELING): 0.10 FOOT
 2. LOCAL ACCURACY (CONFIRMED BY LEVELING): 0.02 FOOT

MAYES COUNTY SH-412B

MAIP

**SH-412B; BEGINNING 0.5 MILE WEST OF THE INTERSECTION OF HIGHWAY 412 AND 412B,
EXTENDING NORTH ALONG SH-412B 5.3 MILES TO HIGHWAY 69A**

SURVEY EXTENTS



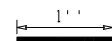
UTILITIES CONTACTED		
UTILITY	CONTACT	PHONE
Electric Tran's Lines:		
GRDA/River Pump Station	Cameron Philpott	(918) 810-8752 (918) 931-1911 ©
Kamo Power	Phillip Fanslet	(918) 256-5551
Pipelines		
Enable OK Intrastate Transmission-Sa	Jerod Ramsey or John Akingbola	(918) 509-0243 (918) 293-8454 (405) 412-8723 ©
Kansas Gas	Stephen Johns	(918) 955-1808
MAIP Water & Sewer	Keith Harris	(918) 373-2085
Mayes County RWD #7	John Sikes	(918)-693-5320 © (918) 388-2692 (H)
ONG/Gas Transmission line	Don Mason	(918) 260-8946
USIC/ONG/EAST OK	Kyle or Logan Irwin	(918) 261-0130 (918) 831-8385 (918) 671-5471 ©
Tel & Tel Lines		
AT&T Distribution	Brad Williams	(918) 230-7474
Chouteau Telephone	Jason Goodnight	(918) 478-9219
Consolidated (Chouteau) Telephone	Stephen Johns	(918) 955-1808
MBO Video/Mannford 2	Steve Fowler	(918) 638-1581

PROJECT LENGTH 28106.42 Ft. 5.32 MI.

BEGINNING STATION : 99+95.87

ENDING STATION : 381+02.29

SCALES



SURVEY DATA SHEETS 1" = 50' TOWN

SURVEY DATA SHEETS 1" = 100'

GEOMETRIC DATA SHEETS 1" = 500'

THIS SURVEY MEETS THE OKLAHOMA MINIMUM STANDARDS FOR THE PRACTICE OF LAND SURVEYING AS ADOPTED BY THE OKLAHOMA STATE BOARD OF REGISTRATION FOR PROFESSIONAL ENGINEERS AND LAND SURVEYORS, SEPTEMBER 14, 2018.

SPECIFICATIONS FOR SURVEYS FOR PRIMARY AND SECONDARY HIGHWAYS DATED MONTH, 2017 GOVERN.



Electronic File Transfer Disclaimer:

These Files, Drawings and/or Notes are provided for information only. The Oklahoma Department of Transportation (ODOT) and the Owner cannot be held responsible for the content or accuracy of these Files, Drawings and/or Notes due to conversions, software translations, or any other manipulation of said Files, Drawings and/or Notes. ODOT expressly disclaims any responsibility arising from any use of these Files, Drawings and/or Notes. To the full extent permitted by applicable law, the recipient of these Files, Drawings and/or Notes hereby agrees to defend, indemnify, and hold harmless ODOT and the Owner from and against any and all claims, suits, actions, damages, loss, liability or costs of every nature or description (including reasonable attorney's fees) arising from, or in any way attributable to or connected with any of these Files, Drawings and/or Notes.



PLS	CEH	12-21	OKLAHOMA DEPARTMENT OF TRANSPORTATION SURVEY DIVISION <h2 style="margin: 0;">SURVEY DATA SHEET</h2> SWO _____
DRAWN	TDL	12-21	
CHECKED	TDL	12-21	
APPROVED			
CREW			
COUNTY <u>MAYES</u> HIGHWAY <u>SH-412B</u> STATE JOB NO. <u>MAIP</u> SHEET NO. <u>S001</u>			

CHECK LEVELS				MAIP 412B		BENCHMARKS LIST		NAVD 88 DATUM
BM NO.	RUN 1	RUN 2	MEAN DIFF.	ADJ. DIFF.	ADJ. ELEV.	PUBLISHED ELEVATION	BM DESCRIPTION, STA/OFFSET	Page 1 of 6
Control No. 103						628.035	2.5" Aluminum Cap "PRY CONTROL POINT"	
to	-26.049	-26.049	-26.0490					
BM 1					601.9860		3/4" Rebar w/cap "KEYSTONE BENCHMARK" Sta. 102+26.25 Offset 2420.06' Lt	
to	-14.746	-14.744	-14.7450	-14.7443				
BM 2					587.2417		Mag Nail w/washer "KEYSTONE BENCHMARK" Sta. 99+35.73 Offset 1676.22' Lt	
to	0.809	0.813	0.8110	0.8117				
BM 3					588.0534		3/4" Rebar w/cap "KEYSTONE BENCHMARK" Sta. 102+34.13 Offset 1347.41' Lt	
to	2.008	2.007	2.0075	2.0082				
BM 4					590.0617		1/2" Rebar w/cap "KEYSTONE BENCHMARK" Sta. 101+80.07 Offset 1271.02' Lt	
to	0.545	0.545	0.5450	0.5457				
BM 5					590.8074		3/4" Rebar w/cap "KEYSTONE BENCHMARK" Sta. 101+82.41 Offset 645.06' Lt	
to	-1.224	-1.227	-1.2255	-1.2248				
BM 6					589.3826		3/4" Rebar w/cap "KEYSTONE BENCHMARK" Sta. 103+55.79 Offset 64.52' Rt	
to	11.566	11.556	11.5560	11.5567				
BM 7					600.9393		3/4" Rebar w/cap "KEYSTONE BENCHMARK" Sta. 100+06.08 Offset 442.04' Rt	
to	-2.227	-2.227	-2.2270	-2.2263				
BM 8					588.7131		3/4" Rebar w/cap "KEYSTONE BENCHMARK" Sta. 110+42.47 Offset 49.91' Lt	
to	7.954	7.954	7.9540	7.9547				
BM 9					606.6678		3/4" Rebar w/cap "KEYSTONE BENCHMARK" Sta. 117+58.36 Offset 51.84' Lt	
to	6.229	6.229	6.2290	6.2297				
BM 10					612.8975		3/4" Rebar w/cap "KEYSTONE BENCHMARK" Sta. 124+67.84 Offset 53.52' Lt	

CHECK LEVELS				MAIP 412B		BENCHMARKS LIST		NAVD 88 DATUM
BM NO.	RUN 1	RUN 2	MEAN DIFF.	ADJ. DIFF.	ADJ. ELEV.	PUBLISHED ELEVATION	BM DESCRIPTION, STA/OFFSET	Page 2 of 6
to	1.858	1.857	1.8575	1.8582				
BM 11					614.7557		3/4" Rebar w/cap "KEYSTONE BENCHMARK" Sta. 132+16.76 Offset 61.05' Rt	
to	11.715	11.717	11.7160	11.7167				
BM 12					626.4724		Mag Nail w/washer "KEYSTONE BENCHMARK" Sta. 140+48.31 Offset 31.82' Lt	
to	-1.216	-1.217	-1.2165	-1.2158				
BM 13					625.2567		1/2" Rebar w/cap "KEYSTONE BENCHMARK" Sta. 140+01.95 Offset 42.53' Lt	
to	7.575	7.575	7.5750	7.5757				
BM 14					632.8324		3/4" Rebar w/cap "KEYSTONE BENCHMARK" Sta. 146+10.36 Offset 82.18' Lt	
to	5.950	5.955	5.9555	5.9562				
BM 15					638.7886		3/4" Rebar w/cap "KEYSTONE BENCHMARK" Sta. 153+10.45 Offset 83.42' Lt	
to	0.212	0.211	0.2115	0.2122				
BM 16					639.0008		3/4" Rebar w/cap "KEYSTONE BENCHMARK" Sta. 160+10.62 Offset 82.27' Lt	
to	3.547	3.546	3.5465	3.5472				
BM 17					642.5481		3/4" Rebar w/cap "KEYSTONE BENCHMARK" Sta. 167+09.29 Offset 38.81' Lt	
to	11.167	11.171	11.1690	11.1697				
BM 18					653.7178		3/4" Rebar w/cap "KEYSTONE BENCHMARK" Sta. 174+06.93 Offset 92.05' Rt	
to	3.628	3.631	3.6295	3.6302				
BM 19					657.3480		3/4" Rebar w/cap "KEYSTONE BENCHMARK" Sta. 181+00.26 Offset 47.20' Lt	
to	3.536	3.536	3.5360	3.5367				
BM 20					660.8847		Mag Nail w/washer "KEYSTONE BENCHMARK" Sta. 187+09.15 Offset 48.90' Lt	
to	12.724	12.728	12.7260	12.7267				

CHECK LEVELS				MAIP 412B		BENCHMARKS LIST		NAVD 88 DATUM
BM NO.	RUN 1	RUN 2	MEAN DIFF.	ADJ. DIFF.	ADJ. ELEV.	PUBLISHED ELEVATION	BM DESCRIPTION, STA/OFFSET	Page 3 of 6
BM 21					673.6114		3/4" Rebar w/cap "KEYSTONE BENCHMARK" Sta. 194+83.67 Offset 89.15' Rt	
to	-2.887	-2.887	-2.8870	-2.8863				
BM 22					670.7262		3/4" Rebar w/cap "KEYSTONE BENCHMARK" Sta. 201+83.64 Offset 47.42' Lt	
to	-4.508	-4.508	-4.5085	-4.5078				
BM 23					666.2174		3/4" Rebar w/cap "KEYSTONE BENCHMARK" Sta. 208+53.19 Offset 61.97' Rt	
to	-0.402	-0.403	-0.4025	-0.4018				
BM 24					665.8150		3/4" Rebar w/cap "KEYSTONE BENCHMARK" Sta. 215+01.64 Offset 47.92' Lt	
to	3.334	3.336	3.3350	3.3357				
BM 25					669.1513		3/4" Rebar w/cap "KEYSTONE BENCHMARK" Sta. 222+91.20 Offset 47.35' Lt	
to	-20.745	-20.741	-20.7430	-20.7423				
BM 26					648.4091		3/4" Rebar w/cap "KEYSTONE BENCHMARK" Sta. 229+90.78 Offset 47.84' Lt	
to	16.713	16.714	16.7135	16.7142				
BM 27					685.1233		3/4" Rebar w/cap "KEYSTONE BENCHMARK" Sta. 237+12.71 Offset 45.43' Rt	
to	16.881	16.881	16.8810	16.8817				
BM 28					681.9890		3/4" Rebar w/cap "KEYSTONE BENCHMARK" Sta. 244+18.04 Offset 45.47' Lt	
to	-4.621	-4.623	-4.6220	-4.6213				
BM 29					677.3837		3/4" Rebar w/cap "KEYSTONE BENCHMARK" Sta. 236+16.98 Offset 1247.43' Lt	
to	-7.064	-7.064	-7.0640	-7.0633				
BM 30					670.3004		3/4" Rebar w/cap "KEYSTONE BENCHMARK" Sta. 238+83.84 Offset 572.04' Lt	
to	11.835	11.835	11.8350	11.8357				
BM 31					682.1362		1/2" Rebar w/cap "KEYSTONE BENCHMARK" Sta. 245+48.76 Offset 61.40' Rt	

CHECK LEVELS				MAIP 412B		BENCHMARKS LIST		NAVD 88 DATUM
BM NO.	RUN 1	RUN 2	MEAN DIFF.	ADJ. DIFF.	ADJ. ELEV.	PUBLISHED ELEVATION	BM DESCRIPTION, STA/OFFSET	Page 4 of 6
to	-18.289	-18.288	-18.2885	-18.2878				
BM 32					663.8484		3/4" Rebar w/cap "KEYSTONE BENCHMARK" Sta. 250+77.09 Offset 628.00' Rt	
to	0.875	0.876	0.8755	0.8762				
BM 33					664.7246		3/4" Rebar w/cap "KEYSTONE BENCHMARK" Sta. 250+93.17 Offset 93.82' Rt	
to	18.107	18.108	18.1075	18.1082				
BM 34					682.8328		3/4" Rebar w/cap "KEYSTONE BENCHMARK" Sta. 251+11.76 Offset 624.03' Lt	
to	-39.894	-39.895	-39.8945	-39.8938				
BM 35					642.9391		3/4" Rebar w/cap "KEYSTONE BENCHMARK" Sta. 257+90.27 Offset 47.03' Lt	
to	4.791	4.788	4.7895	4.7902				
BM 36					647.7293		3/4" Rebar w/cap "KEYSTONE BENCHMARK" Sta. 264+66.56 Offset 99.66' Rt	
to	-31.186	-31.183	-31.1845	-31.1838				
BM 37					616.5455		3/4" Rebar w/cap "KEYSTONE BENCHMARK" Sta. 271+66.25 Offset 48.61' Lt	
to	-9.914	-9.913	-9.9135	-9.9128				
BM 38					606.6327		3/4" Rebar w/cap "KEYSTONE BENCHMARK" Sta. 278+55.16 Offset 103.44' Rt	
to	-0.719	-0.719	-0.7190	-0.7183				
BM 39					605.9144		3/4" Rebar w/cap "KEYSTONE BENCHMARK" Sta. 285+38.52 Offset 61.82' Lt	
to	-0.968	-0.967	-0.9675	-0.9668				
BM 40					604.9477		3/4" Rebar w/cap "KEYSTONE BENCHMARK" Sta. 282+42.69 Offset 71.42' Rt	
to	1.958	1.958	1.9580	1.9587				
BM 41					606.9064		Mag Nail w/washer "KEYSTONE BENCHMARK" Sta. 299+36.87 Offset 66.53' Lt	
to	-0.614	-0.611	-0.6125	-0.6118				

PLS	CEH	12-21	OKLAHOMA DEPARTMENT OF TRANSPORTATION SURVEY DIVISION
DRAWN	TDL	12-21	
CHECKED	TDL	12-21	
APPROVED			
CREW			
COUNTY <u>MAYES</u> HIGHWAY <u>SH-412B</u> STATE JOB NO. <u>MAIP</u> SHEET NO. <u>S002</u>			SURVEY DATA SHEET SWO _____

CHECK LEVELS				MAIP 412B		BENCHMARKS LIST		NAVD 88 DATUM
BM NO.	RUN 1	RUN 2	MEAN DIFF.	ADJ. DIFF.	ADJ. ELEV.	PUBLISHED ELEVATION	BM DESCRIPTION, STA/OFFSET	Page 5 of 6
BM 42					606.2946		3/4" Rebar w/cap "KEystone BENCHMARK" Sta. 307+02.13 Offset 79.74' Rt	
to	0.719	0.721	0.7200	0.7207				
BM 43					607.0153		3/4" Rebar w/cap "KEystone BENCHMARK" Sta. 314+00.50 Offset 88.91' Rt	
to	1.454	1.454	1.4540	1.4547				
BM 44					608.4701		Mag Nail w/washer "KEystone BENCHMARK" Sta. 320+81.18 Offset 72.35' Lt	
to	-1.052	-1.048	-1.0500	-1.0493				
BM 45					607.4208		3/4" Rebar w/cap "KEystone BENCHMARK" Sta. 326+85.25 Offset 99.75' Rt	
to	-1.063	-1.062	-1.0625	-1.0618				
BM 46					605.4590		Mag Nail w/washer "KEystone BENCHMARK" Sta. 333+78.44 Offset 61.37' Rt	
to	0.849	0.849	0.8490	0.8497				
BM 47					608.3087		Mag Nail w/washer "KEystone BENCHMARK" Sta. 340+42.61 Offset 73.80' Lt	
to	-1.358	-1.358	-1.3580	-1.3573				
BM 48					604.9514		3/4" Rebar w/cap "KEystone BENCHMARK" Sta. 347+77.57 Offset 47.03' Rt	
to	-2.848	-2.848	-2.8480	-2.8473				
BM 49					602.1042		3/4" Rebar w/cap "KEystone BENCHMARK" Sta. 354+00.93 Offset 49.07' Rt	
to	3.735	3.737	3.7360	3.7357				
BM 50					605.8409		Mag Nail w/washer "KEystone BENCHMARK" Sta. 359+40.57 Offset 95.54' Lt	
to	-5.238	-5.238	-5.2380	-5.2373				
BM 51					600.6036		3/4" Rebar w/cap "KEystone BENCHMARK" Sta. 366+70.01 Offset 82.10' Rt	
to	5.379	5.382	5.3805	5.3812				
BM 52					605.9848		Cut "X" in structure Sta. 373+81.33 Offset 39.14' Lt	

CHECK LEVELS				MAIP 412B		BENCHMARKS LIST		NAVD 88 DATUM
BM NO.	RUN 1	RUN 2	MEAN DIFF.	ADJ. DIFF.	ADJ. ELEV.	PUBLISHED ELEVATION	BM DESCRIPTION, STA/OFFSET	Page 6 of 6
to	-6.508	-6.508	-6.5080	-6.5073				
BM 53					599.4776		Mag Nail w/washer "KEystone BENCHMARK" Sta. 381+47.06 Offset 206.77' Rt	
to	58.710	58.710	58.7100	58.7107				
BM 54					658.1883		1/2" Rebar w/cap "KEystone BENCHMARK" Sta. 378+45.64 Offset 2394.46' Lt	
to	-30.154	-30.154	-30.1540	-30.1533				
Control No. 103					628.0350	628.035	2.5" Aluminum Cap "PRY CONTROL POINT"	

PLS	CEH	12-21	OKLAHOMA DEPARTMENT OF TRANSPORTATION SURVEY DIVISION
DRAWN	TDL	12-21	
CHECKED	TDL	12-21	
APPROVED			
CREW			
COUNTY <u>MAYES</u> HIGHWAY <u>SH-412B</u> STATE JOB NO. <u>MAIP</u> SHEET NO. <u>S003</u>			SURVEY DATA SHEET SWO _____

P.O.T./P.O.B. Sta. 99+95.87

A002 N89°21'44.00"E

A002 N88°20'21.00"E

342

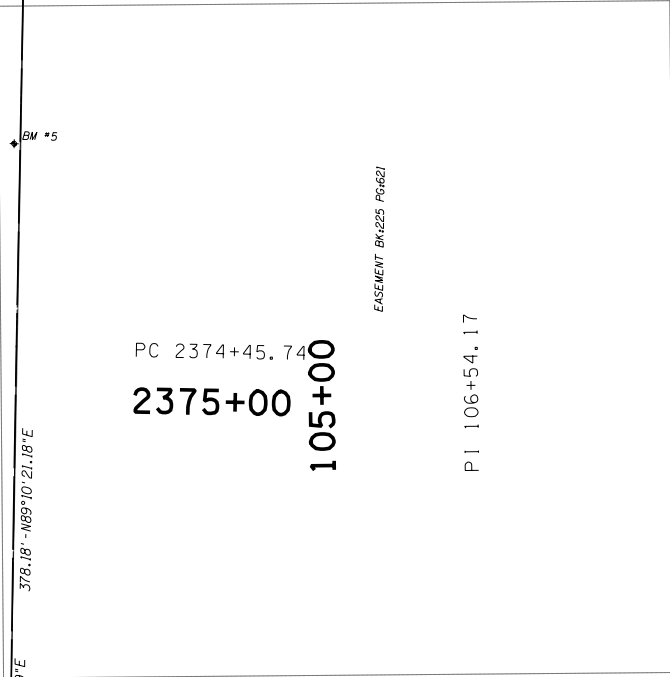
300

345

344

RIGHT OF WAY EASEMENT BK#225 PG#621

RIGHT OF WAY EASEMENT BK#630 PG#166



PC 2374+45.74
2375+00
105+00

EASEMENT BK#225 PG#621

PI 106+54.17

110+00

PI 113+08.33

115+00

PI 119+62.49
120+00

125+00

PC 126+13.81

128+00

129.45' - 188°20'07.59"E

378.18' - N89°10'21.18"E

A001 N02°22'09.71"W

A001 N01°52'37.54"W

A001 N01°45'29.97"W

A001 N01°42'41.14"W

PI 2379+57.28
2380+00

CURVE 1 DATA
P.I. Sta. 2379+57.28
X=2771381.50168
Y=439618.94734
φ=01°01'23.00"
D=00°06'00.00"
T=511.541'
L=1023.056'
R=57295.780'
E=2.284'

PT 2384+68.79
2385+00

USA
BK#450
PG#320

USA
BK#450
PG#320

SH-412B

CURVE 2 DATA
P.I. Sta. 131+68.60
X=2771276.76601
Y=442789.91508
φ=28°56'17.57"
D=02°39'53.71"
T=554.791'
L=1085.894'
R=2150.000'
E=70.426'



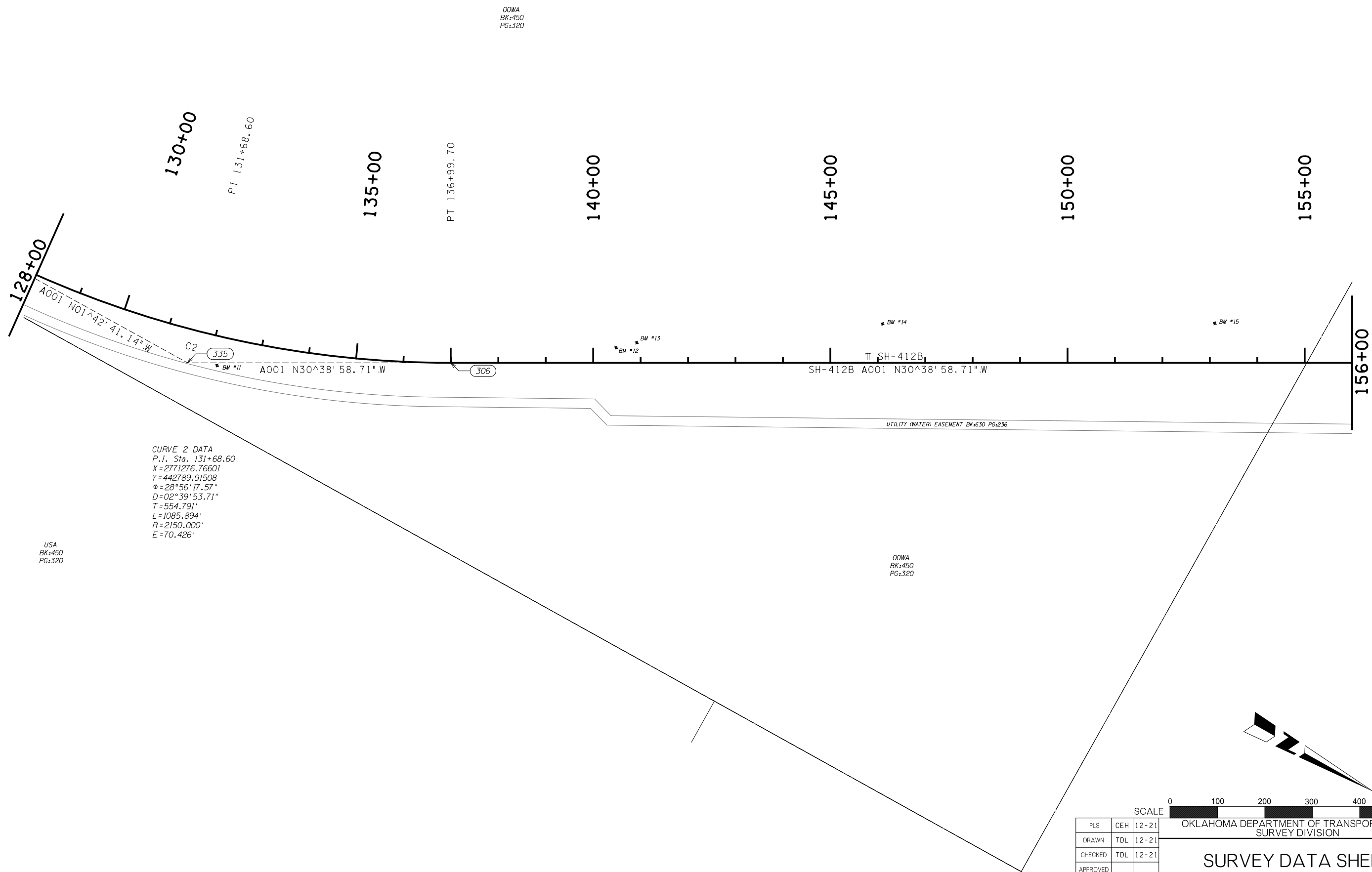
SCALE 0 100 200 300 400 500 Feet

PLS	CEH	12-21
DRAWN	TDL	12-21
CHECKED	TDL	12-21
APPROVED		
CREW		

OKLAHOMA DEPARTMENT OF TRANSPORTATION
SURVEY DIVISION

SURVEY DATA SHEET

SWO _____



OOWA
BK:450
PG:320

130+00

PI 131+68.60

135+00

PT 136+99.70

140+00

145+00

150+00

155+00

128+00

A001 N01°42'41.14\" W

C2
335

A001 N30°38'58.71\" W

306

BM #12

BM #13

BM #14

BM #15

SH-412B

A001 N30°38'58.71\" W

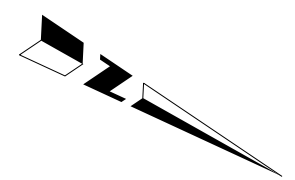
156+00

UTILITY (WATER) EASEMENT BK:630 PG:236

CURVE 2 DATA
P.I. Sta. 131+68.60
X=2771276.76601
Y=442789.91508
φ=28°56'17.57\"
D=02°39'53.71\"
T=554.791'
L=1085.894'
R=2150.000'
E=70.426'

USA
BK:450
PG:320

OOWA
BK:450
PG:320



SCALE 0 100 200 300 400 500 Feet

PLS	CEH	12-21
DRAWN	TDL	12-21
CHECKED	TDL	12-21
APPROVED		
CREW		

OKLAHOMA DEPARTMENT OF TRANSPORTATION
SURVEY DIVISION

SURVEY DATA SHEET

SWO _____



156+00

160+00

165+00

PC 169+92.04

170+00

175+00

PI 176+05.06

180+00

PT 181+99.68

184+00

BM #16

BM #17

BM #18

BM #19

A001 N30°38' 58.71" W
 SH-412B
 A001 N30°38' 58.71" W

A001 N30°38' 58.71" W

A001 N06°22' 17.63" W

307

336

C3

309

CURVE 3 DATA
 P.I. Sta. 176+05.06
 X = 2769003.04031
 Y = 446626.98379
 φ = 24°16' 41.03"
 D = 02°00' 37.36"
 T = 613.018'
 L = 1207.637'
 R = 2850.000'
 E = 65.183'

OOWA
 BK:450
 PG:320



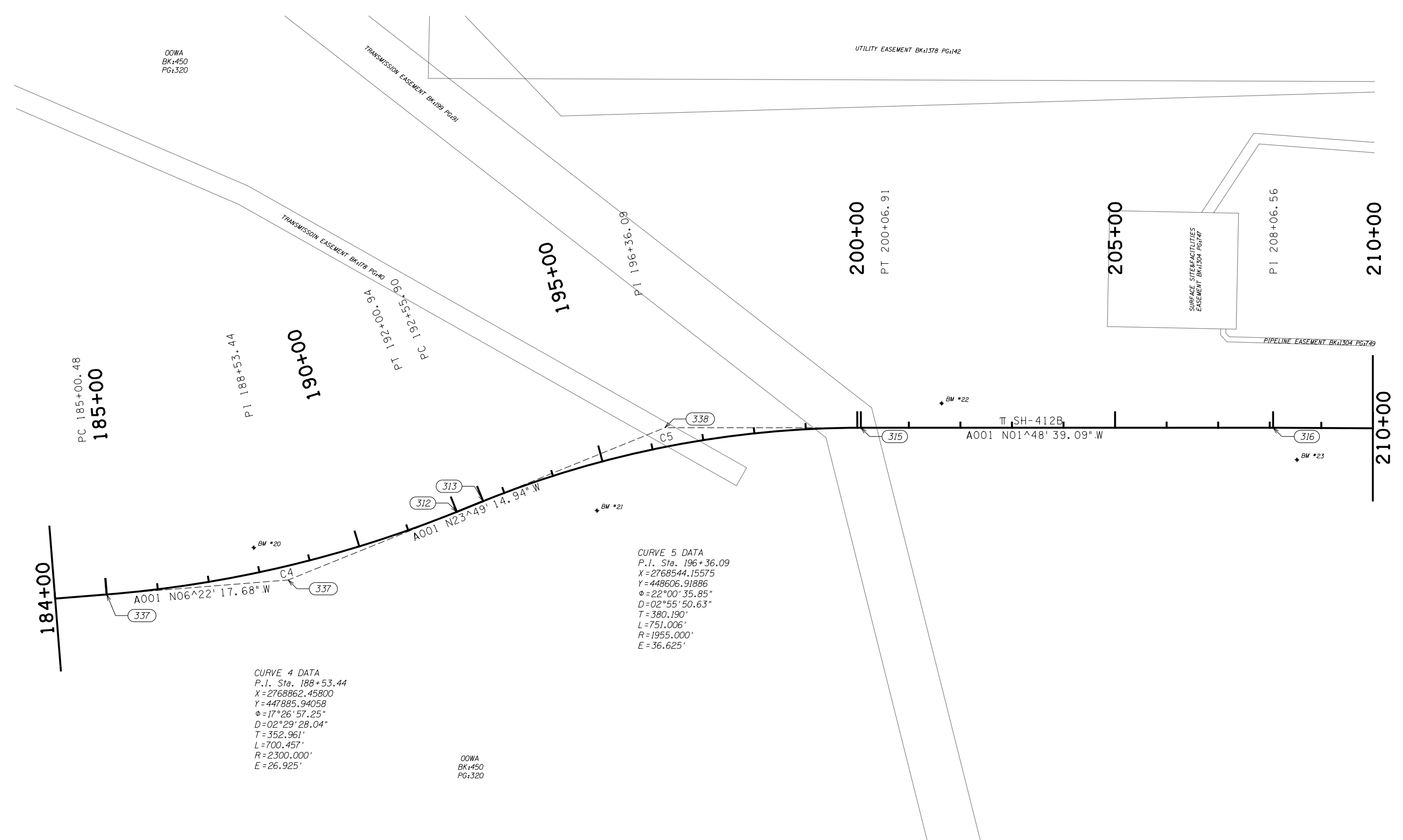
SCALE 0 100 200 300 400 500 Feet

PLS	CEH	12-21
DRAWN	TDL	12-21
CHECKED	TDL	12-21
APPROVED		
CREW		

OKLAHOMA DEPARTMENT OF TRANSPORTATION
 SURVEY DIVISION

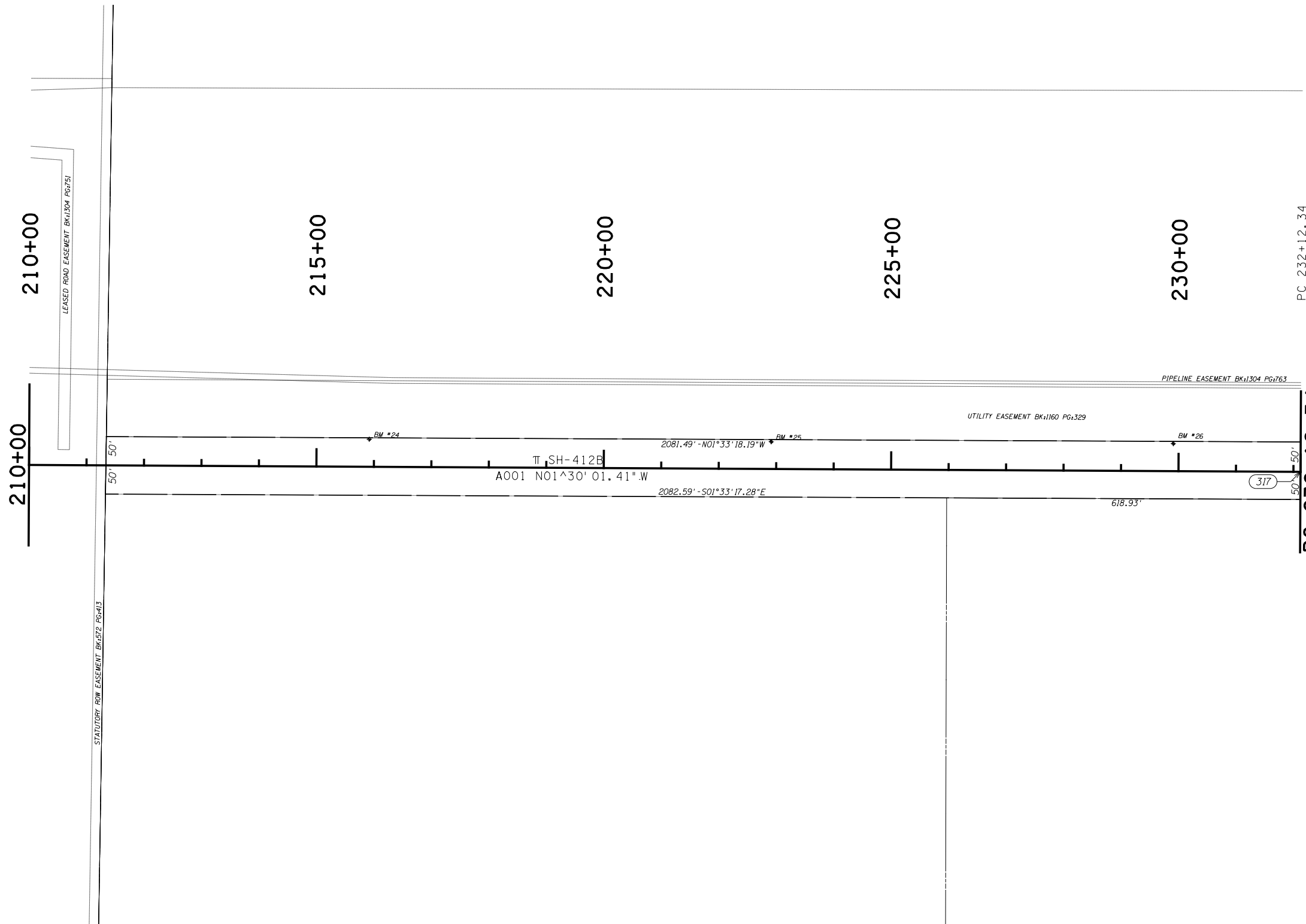
SURVEY DATA SHEET

SWO _____



SCALE 0 100 200 300 400 500 Feet

PLS	CEH	12-21	OKLAHOMA DEPARTMENT OF TRANSPORTATION SURVEY DIVISION
DRAWN	TDL	12-21	
CHECKED	TDL	12-21	
APPROVED			
CREW			
COUNTY <u>MAYES</u> HIGHWAY <u>SH-412B</u> STATE JOB NO. <u>MA1P</u> SHEET NO. <u>S007</u>			SURVEY DATA SHEET SWO _____



PC 232+12.34

PC 232+12.34



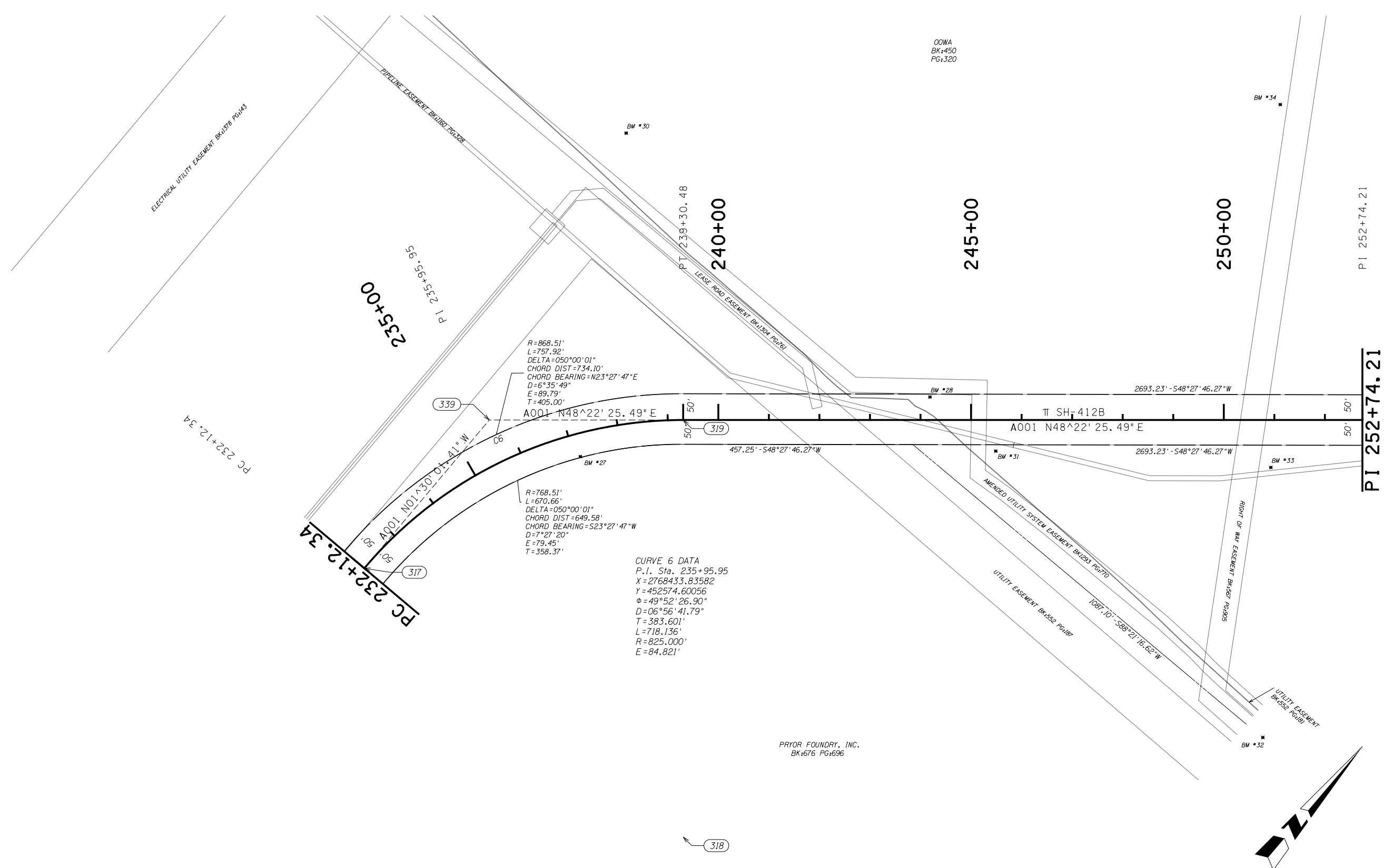
SCALE 0 100 200 300 400 500 Feet

PLS	CEH	12-21
DRAWN	TDL	12-21
CHECKED	TDL	12-21
APPROVED		
CREW		

OKLAHOMA DEPARTMENT OF TRANSPORTATION
SURVEY DIVISION

SURVEY DATA SHEET

SWO _____



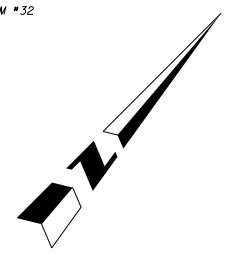
R=868.51'
 L=757.92'
 DELTA=050°00'01"
 CHORD DIST=734.10'
 CHORD BEARING=N23°27'47"E
 D=6°35'49"
 E=89.79'
 T=405.00'

R=768.51'
 L=670.66'
 DELTA=050°00'01"
 CHORD DIST=649.58'
 CHORD BEARING=S23°27'47"W
 D=7°27'20"
 E=79.45'
 T=358.37'

CURVE 6 DATA
 P.I. Sta. 235+95.95
 X=2768433.83582
 Y=452574.60056
 φ=49°52'26.90"
 D=06°56'41.79"
 T=383.601'
 L=718.136'
 R=825.000'
 E=84.821'

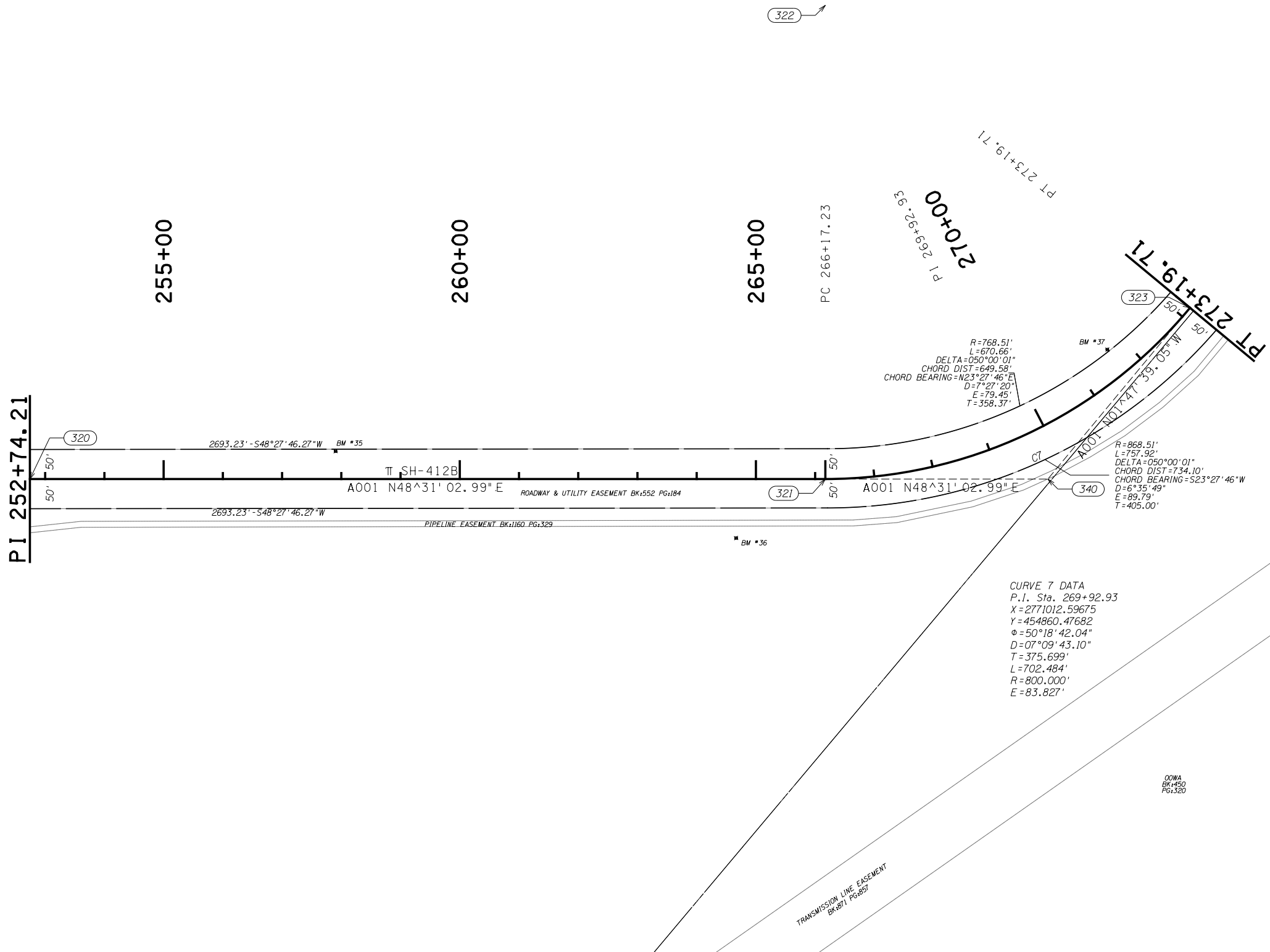
PRYOR FOUNDRY, INC.
 BK:676 PG:696

OOWA
 BK:450
 PG:320

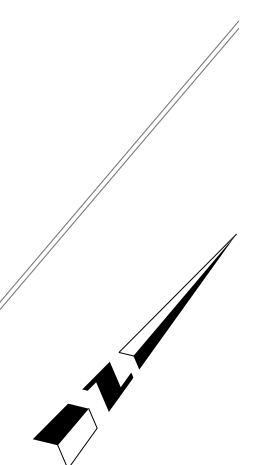


SCALE 0 100 200 300 400 500 Feet

PLS	CEH	12-21	OKLAHOMA DEPARTMENT OF TRANSPORTATION SURVEY DIVISION SURVEY DATA SHEET SWO _____
DRAWN	TDL	12-21	
CHECKED	TDL	12-21	
APPROVED			
CREW			
COUNTY	MAYES	HIGHWAY SH-412B	STATE JOB NO. MA1P SHEET NO. S009



CURVE 7 DATA
 P.I. Sta. 269+92.93
 X = 2771012.59675
 Y = 454860.47682
 Δ = 50°18'42.04"
 D = 07°09'43.10"
 T = 375.699'
 L = 702.484'
 R = 800.000'
 E = 83.827'



SCALE 0 100 200 300 400 500 Feet

PLS	CEH	12-21	OKLAHOMA DEPARTMENT OF TRANSPORTATION SURVEY DIVISION
DRAWN	TDL	12-21	
CHECKED	TDL	12-21	
APPROVED			
CREW			
COUNTY <u>MAYES</u> HIGHWAY <u>SH-412B</u> STATE JOB NO. <u>MA1P</u> SHEET NO. <u>S010</u>			SURVEY DATA SHEET SWO _____

PT 273+19.71

PT 273+19.71

275+00

280+00

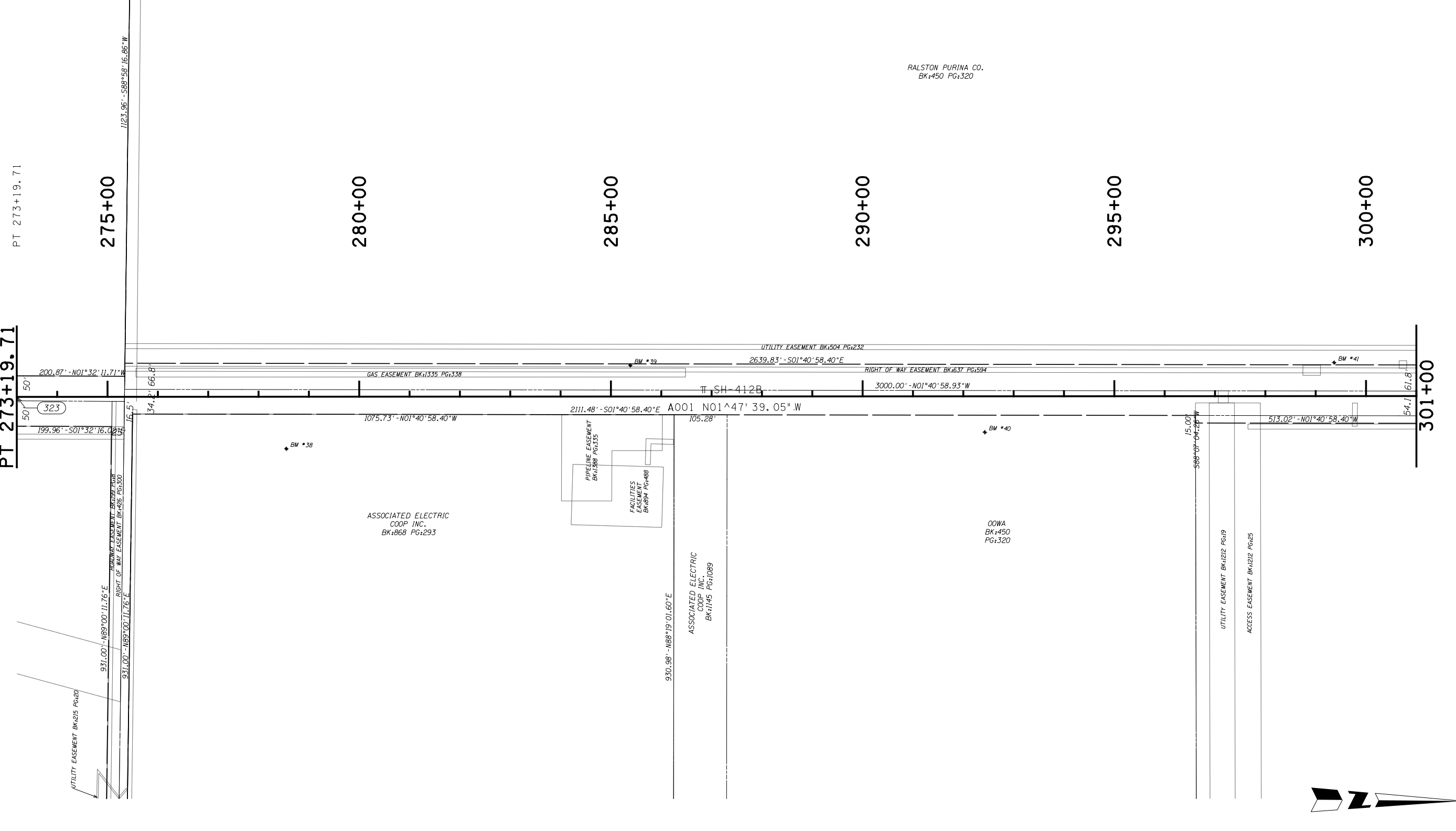
285+00

290+00

295+00

300+00

301+00



200.87' - N01°32' 11.71" W

199.96' - S01°32' 16.02" E

34.2' 66.8'

931.00' - N89°00' 11.76" E

931.00' - N89°00' 11.76" E

1075.73' - N01°40' 58.40" W

2111.48' - S01°40' 58.40" E A001 N01°47' 39.05" W

105.28'

UTILITY EASEMENT BK:504 Pg:232

2639.83' - S01°40' 58.40" E

RIGHT OF WAY EASEMENT BK:637 Pg:594

3000.00' - N01°40' 58.93" W

BM #40

513.02' - N01°40' 58.40" W

54.7' 61.8'



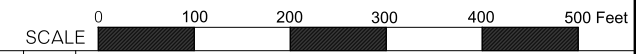
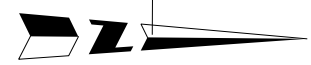
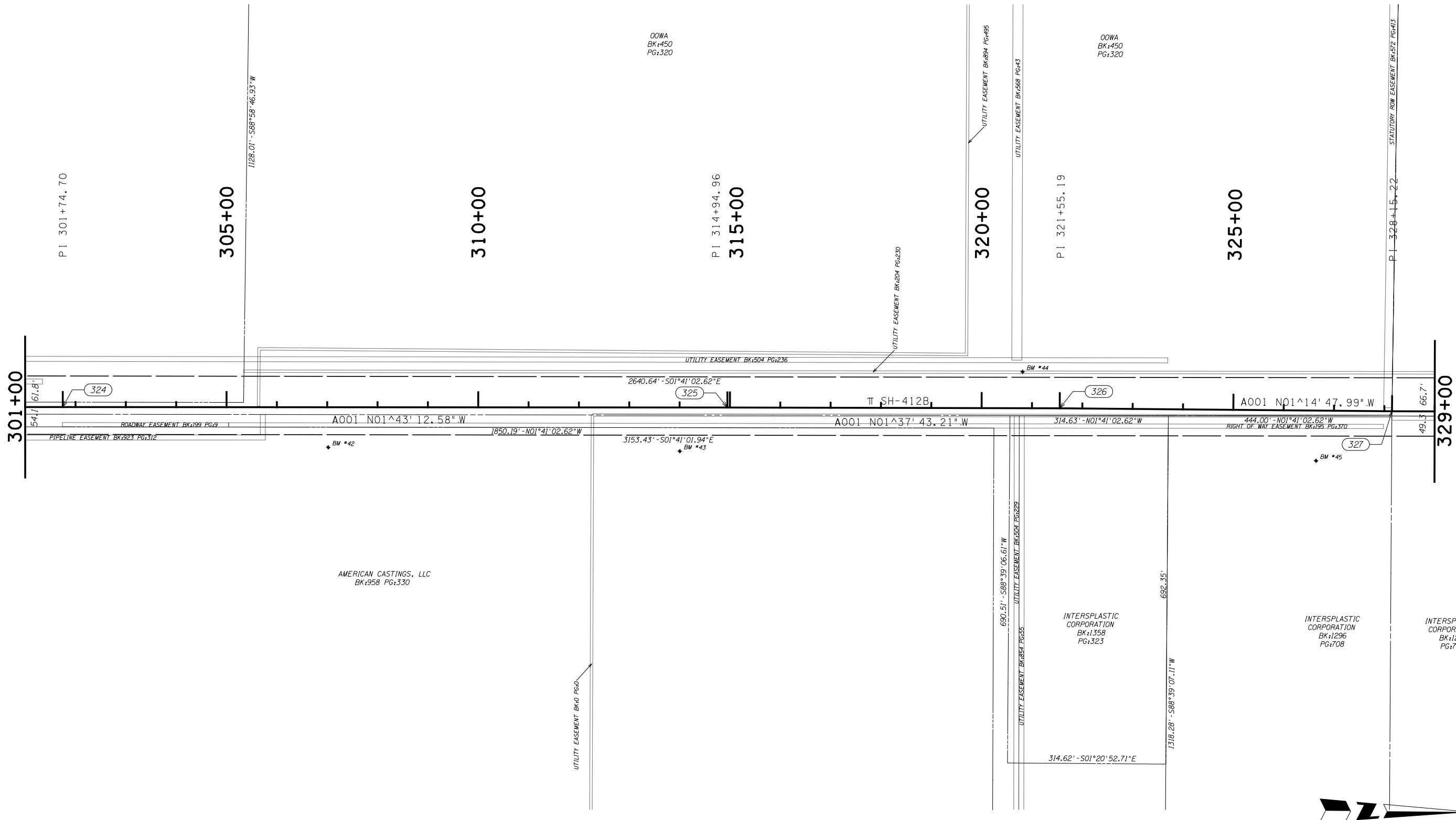
SCALE 0 100 200 300 400 500 Feet

PLS	CEH	12-21
DRAWN	TDL	12-21
CHECKED	TDL	12-21
APPROVED		
CREW		

OKLAHOMA DEPARTMENT OF TRANSPORTATION
SURVEY DIVISION

SURVEY DATA SHEET

SWO _____



PLS	CEH	12-21	OKLAHOMA DEPARTMENT OF TRANSPORTATION SURVEY DIVISION
DRAWN	TDL	12-21	
CHECKED	TDL	12-21	
APPROVED			
CREW			
COUNTY <u>MAYES</u> HIGHWAY <u>SH-412B</u> STATE JOB NO. <u>MA1P</u> SHEET NO. <u>S012</u>			SURVEY DATA SHEET SWO _____

329+00
330+00
335+00

OOWA
BK:450
PG:320

RAILROAD EASEMENT BK:474 PG:224
RAILROAD EASEMENT BK:652 PG:134
974.88' - N88°29'46.79"E

PI 334+75.37
335+00

CASCADES HOLDING US, INC.
BK:1392 PG:231

UTILITY EASEMENT BK:200 PG:160

340+00
1360.32' - S88°25'18.45"W

PI 341+35.54
345+00

EVANS ELECTRIC, INC.
BK:798 PG:849

HARRIS HOLDING, INC.
BK:1052 PG:271

350+00
355+00

PI 354+55.98
355+00

RAE CORP.
BK:870 PG:189
BK:767 PG:357

619.46' - S88°44'59.03"W
619.46' - S88°44'59.03"W

329+00

66.7'
49'
346.79' - N01°41'28.54"W

A001 N01°35'52.33"W

A001 N01°41'00.81"W

8.81'
N88°17'52.05"W 276.40'
63.75'
676.40' - S01°41'28.54"E

31.97'
S88°18'31.46"E
202.50'

A001 N01°48'06.28"W
479.25' - S01°41'28.54"E

412.24'
454.24' - S01°41'34.49"E

357+00

1177.38' - S01°41'28.54"E
550.69' - N01°41'28.54"W
1135.39' - S01°41'28.53"E

CASCADES HOLDING US, INC.
BK:1392 PG:231

OOWA
BK:450
PG:320

423.13' - N88°18'31.46"E

402.55' - N88°29'54.65"E

402.81' - S88°29'54.65"W

19.60'
N01°41'28.54"W

RIGHT OF WAY EASEMENT BK:1059 PG:473

RIGHT OF WAY EASEMENT BK:454 PG:226

1278.10'
1318.22' - N88°21'32.21"E

1137.00' - S01°44'10.55"E

PIPELINE EASEMENT BK:693 PG:614



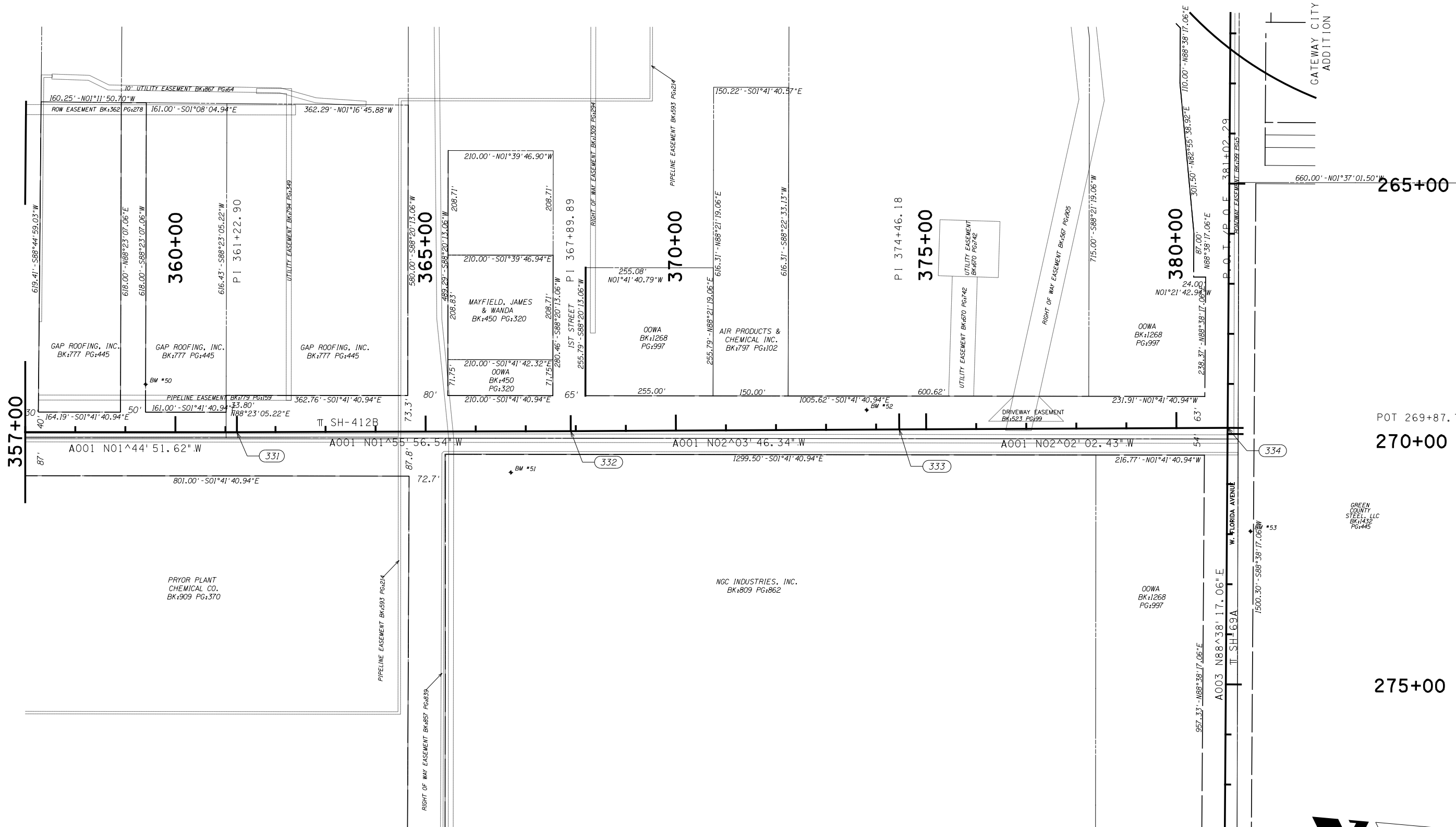
SCALE 0 100 200 300 400 500 Feet

PLS	CEH	12-21
DRAWN	TDL	12-21
CHECKED	TDL	12-21
APPROVED		
CREW		

OKLAHOMA DEPARTMENT OF TRANSPORTATION
SURVEY DIVISION

SURVEY DATA SHEET

SWO _____



GATEWAY CITY
ADDITION



SCALE 0 100 200 300 400 500 Feet

PLS	CEH	12-21	OKLAHOMA DEPARTMENT OF TRANSPORTATION SURVEY DIVISION
DRAWN	TDL	12-21	
CHECKED	TDL	12-21	
APPROVED			
CREW			
SURVEY DATA SHEET			SWO _____
COUNTY	MAYES	HIGHWAY SH-412B STATE JOB NO. MA1P SHEET NO. S014	