

Fiscal Year 2009 Annual Review of Glaucoma Products

Oklahoma HealthCare Authority

March 2010

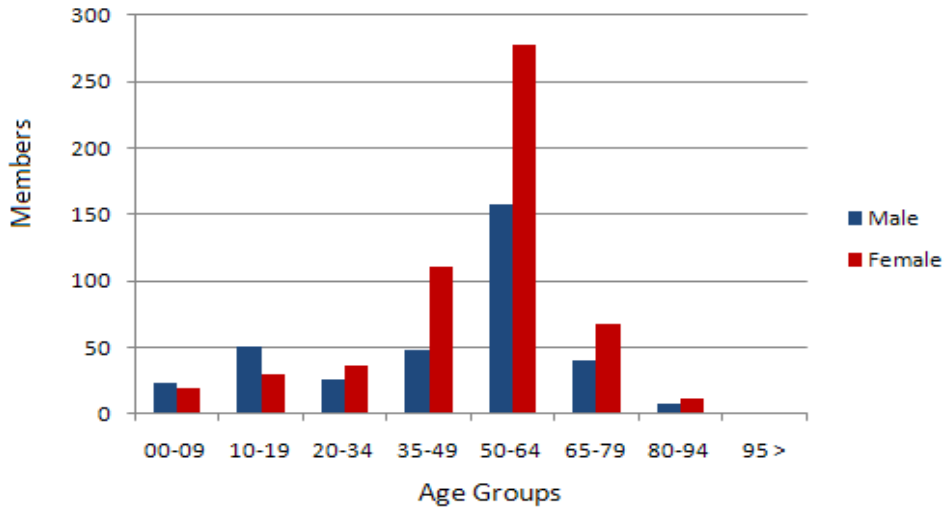
Current Prior Authorization Criteria

- FDA approved diagnosis.
- Member must attempt at least one Tier-1 trial of a minimum of 4 weeks duration within the last 90 days. Tier-1 trial may be from any pharmacologic class.
- Approval may be granted if there is a documented adverse effect, drug interaction, or contraindication to Tier-1 products.
- Approval may be granted if there is a unique FDA approved indication not covered by Tier-1 products.
- Member must have had a comprehensive dilated eye exam within the last 365 day period as recommended by the National Institute of Health.
- Approval duration will be for 1 year.

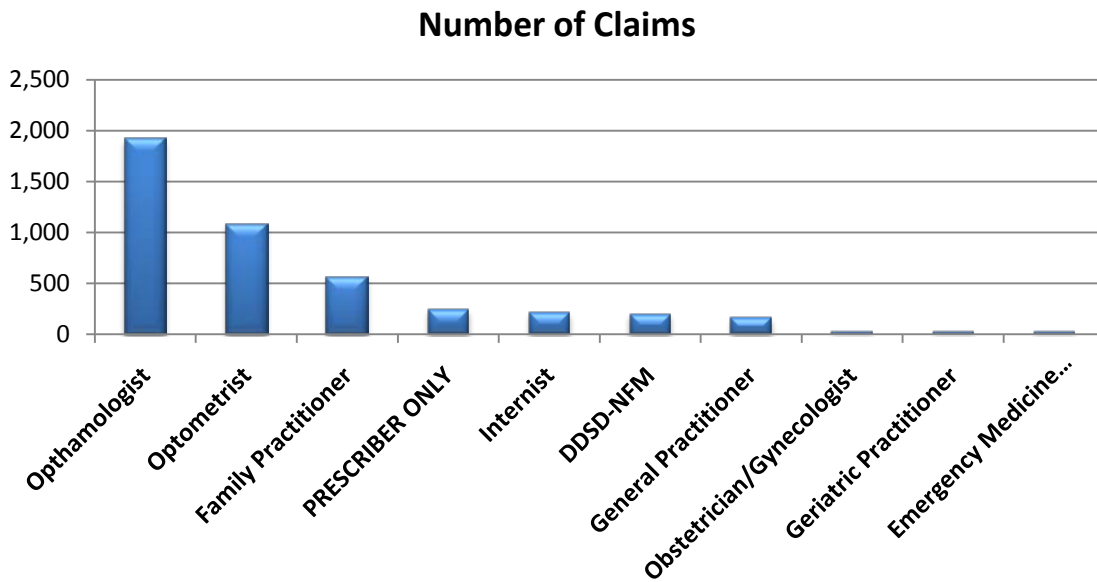
Utilization Comparison: Fiscal Year 2008 and 2009

Fiscal Year	Total Members	Total Claims	Total Paid	Paid/Claim	Per-Diem	Total Units	Total Days
2008							
	899	4,701	\$404,292.55	\$86.00	\$3.01	29,747	134,190
2009							
	907	4,647	\$404,466.70	\$87.04	\$3.00	26,905	134,877
% Change	0.90%	-1.10%	0.00%	1.20%	-0.30%	-9.60%	0.50%
Change	8	-54	\$174.15	\$1.04	-\$0.01	-2,842	687

Age and Gender FY 2009

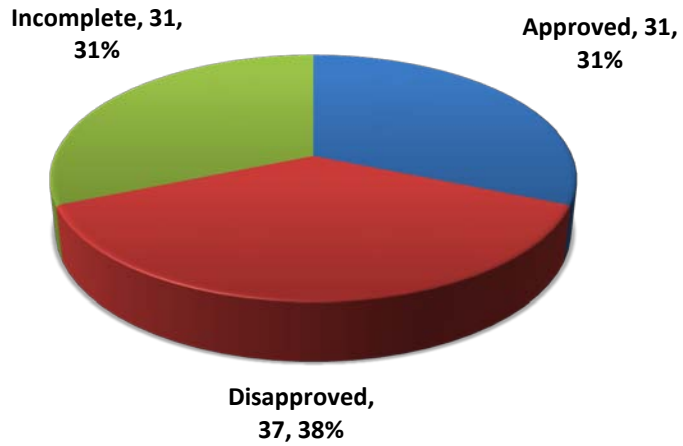


Top Prescriber Specialty FY 2009



Prior Authorization Totals

PA Details (204 total petitions)



Recommendations

The College of Pharmacy does not recommend any changes to this category at this time.

Utilization Fiscal Year 2009

GENERIC NAME	BRAND NAME	CLAIMS	DAYS	MEMBERS	PAID	CLAIMS/ MEMBER	PER- DIEM
Latanoprost	XALATAN SOL 0.005%	1,069	34,122	279	\$94,427.40	3.83	\$2.77
Travoprost	TRAVATAN Z DRO 0.004%	612	16,519	206	\$62,574.06	2.97	\$3.79
Bimatoprost	LUMIGAN SOL 0.03%	579	17,877	130	\$72,442.94	4.45	\$4.05
Travoprost	TRAVATAN DRO 0.004%	415	10,873	133	\$38,846.07	3.12	\$3.57
Brimonidine	ALPHAGAN P SOL 0.15%	296	8,088	86	\$33,569.98	3.44	\$4.15
Brimonidine	BRIMONIDINE SOL 0.2% OP	272	6,655	92	\$3,920.48	2.96	\$0.59
Dorzolamide-Timolol	COSOPT SOL 2-0.5%OP	247	8,302	98	\$29,414.66	2.52	\$3.54
Dorzolamide-Timolol	DORZOL/TIM SOL 2-0.5%OP	218	7,475	90	\$21,359.44	2.42	\$2.86
Brimonidine -Timolol	COMBIGAN SOL 0.2/0.5%	206	4,415	53	\$15,936.17	3.89	\$3.61
Timolol	TIMOLOL MAL SOL 0.5% OP	201	6,227	85	\$1,597.33	2.36	\$0.26
Timolol	TIMOLOL GEL SOL 0.5% OP	121	3,170	29	\$4,196.91	4.17	\$1.32
Brimonidine	ALPHAGAN P SOL 0.1%	100	3,284	34	\$10,285.40	2.94	\$3.13
Dorzolamide	TRUSOPT SOL 2% OP	64	1,445	21	\$4,397.00	3.05	\$3.04
Betaxolol	BETOPTIC-S SUS 0.25% OP	55	1,274	15	\$5,542.03	3.67	\$4.35
Dorzolamide	DORZOLAMIDE SOL 2% OP	50	1,346	20	\$2,823.69	2.5	\$2.10
Timolol	TIMOLOL MAL SOL 0.25% OP	42	1,274	15	\$294.68	2.8	\$0.23
Pilocarpine	PILOCARPINE SOL 4% OP	22	605	3	\$216.06	7.33	\$0.36
Levobunolol	LEVOBUNOLOL SOL 0.5% OP	16	290	4	\$242.36	4	\$0.84
Dipivefrin	DIPIVEFRIN SOL 0.1% OP	15	298	3	\$127.25	5	\$0.43
Pilocarpine	PILOCARPINE SOL 2% OP	11	215	1	\$93.25	11	\$0.43
Betaxolol	BETAXOLOL SOL 0.5% OP	11	266	4	\$510.93	2.75	\$1.92
Timolol	BETIMOL SOL 0.5%	10	409	7	\$692.94	1.43	\$1.69
Echothiophate Iodide	PHOSPHOLINE 0.125%OP	9	260	6	\$785.55	1.5	\$3.02
Pilocarpine	PILOCARPINE SOL 1% OP	3	44	2	\$17.72	1.5	\$0.40
Timolol	ISTALOL SOL 0.5% OP	1	30	1	\$89.05	1	\$2.97
Timolol	BETIMOL SOL 0.25%	1	15	1	\$36.05	1	\$2.40
Timolol	TIMOLOL GEL SOL 0.25% OP	1	99	1	\$27.30	1	\$0.28
TOTALS		4,647	134,877	907*	\$404,466.70	5.12	\$3.00

*Total number of unduplicated members.