

Plan Review Data Report

Figure 1: Number of Stage-1 and Stage-2 Plans reviewed, or Pending > 45 Days, at End of each Month

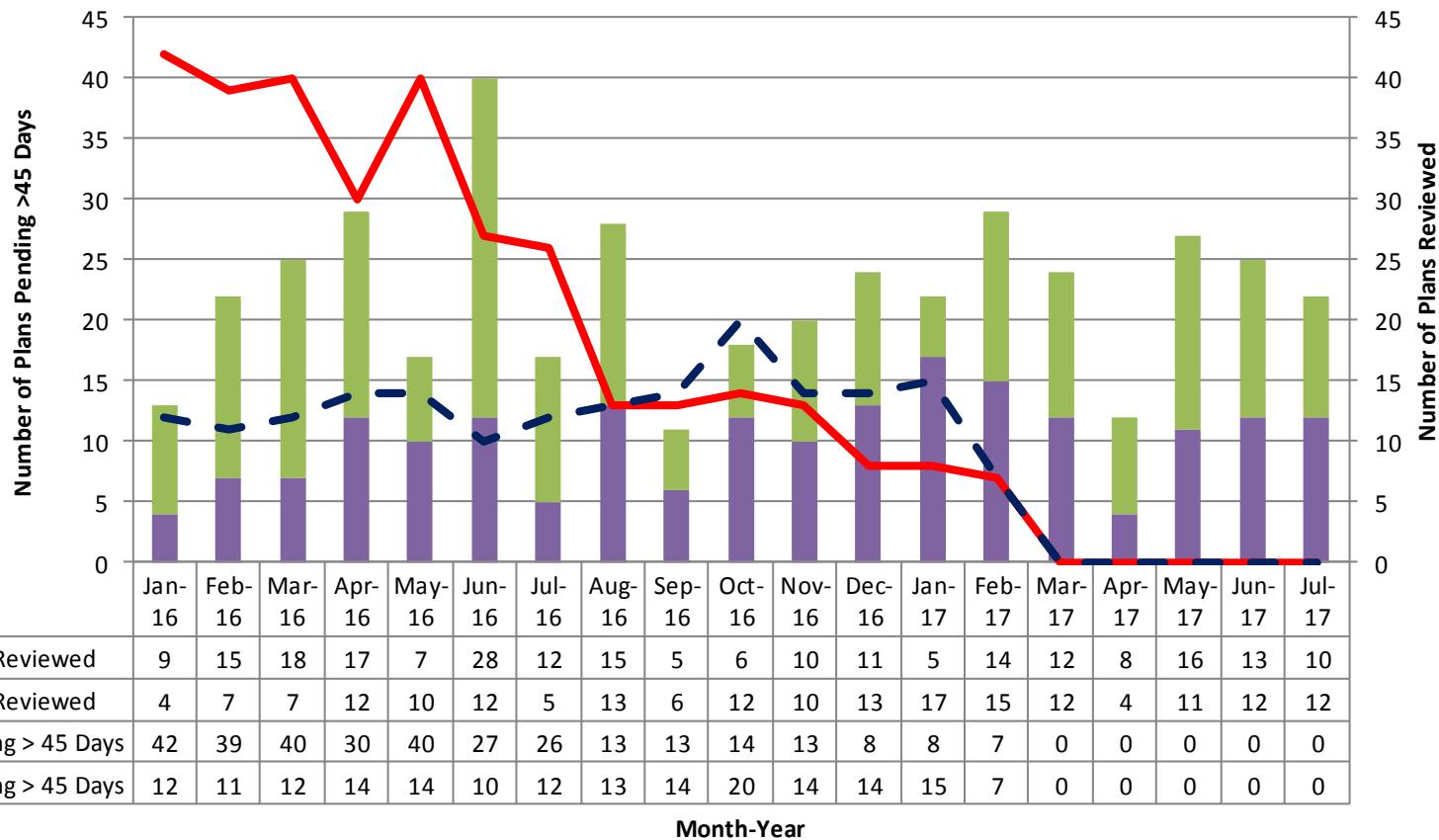


Figure 2: Average Number of OSDH Reviews Required to Approve Stage Plans and Number of Approvals

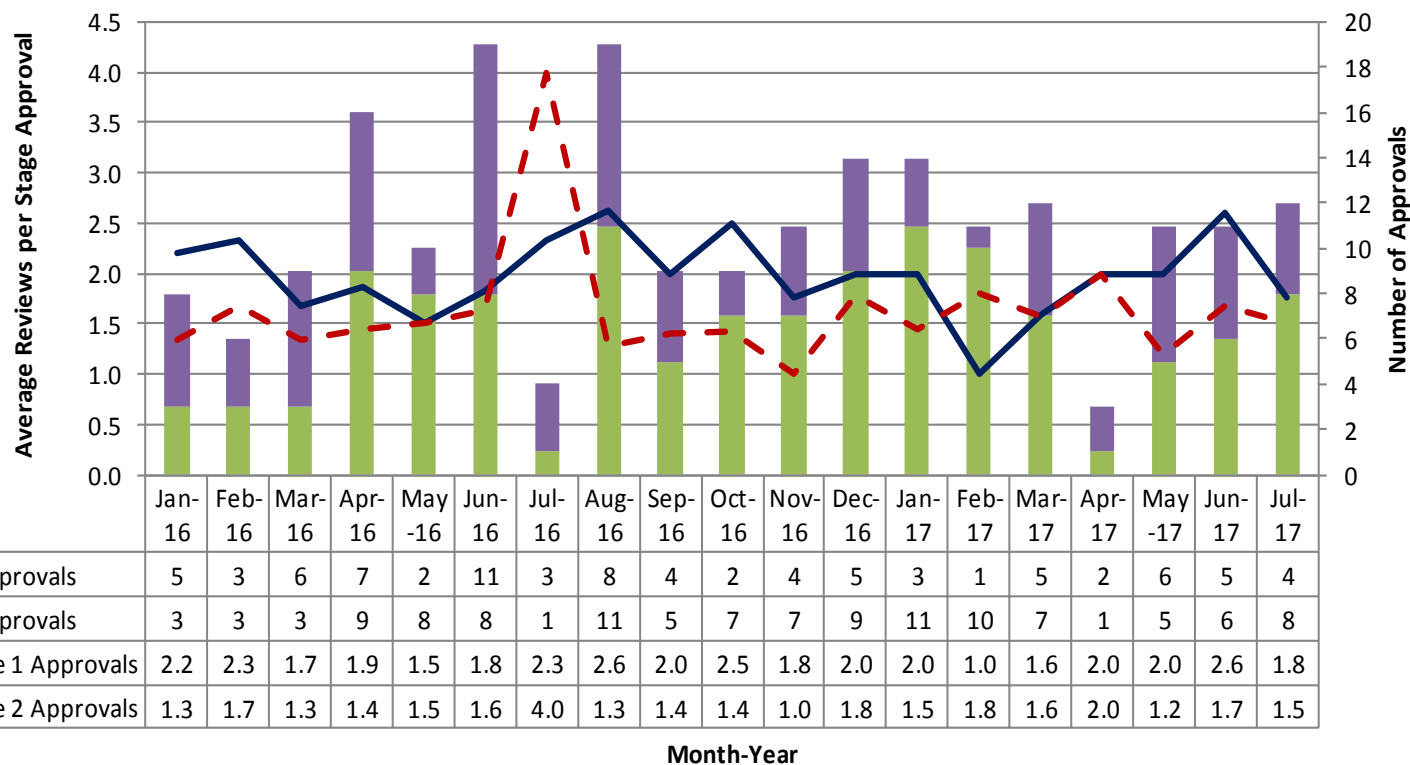


Figure 3: Average Days for OSDH to Approve 1st, 2nd, 3rd and 4th Plan Submittals, by Stage and Month and Number of Approvals

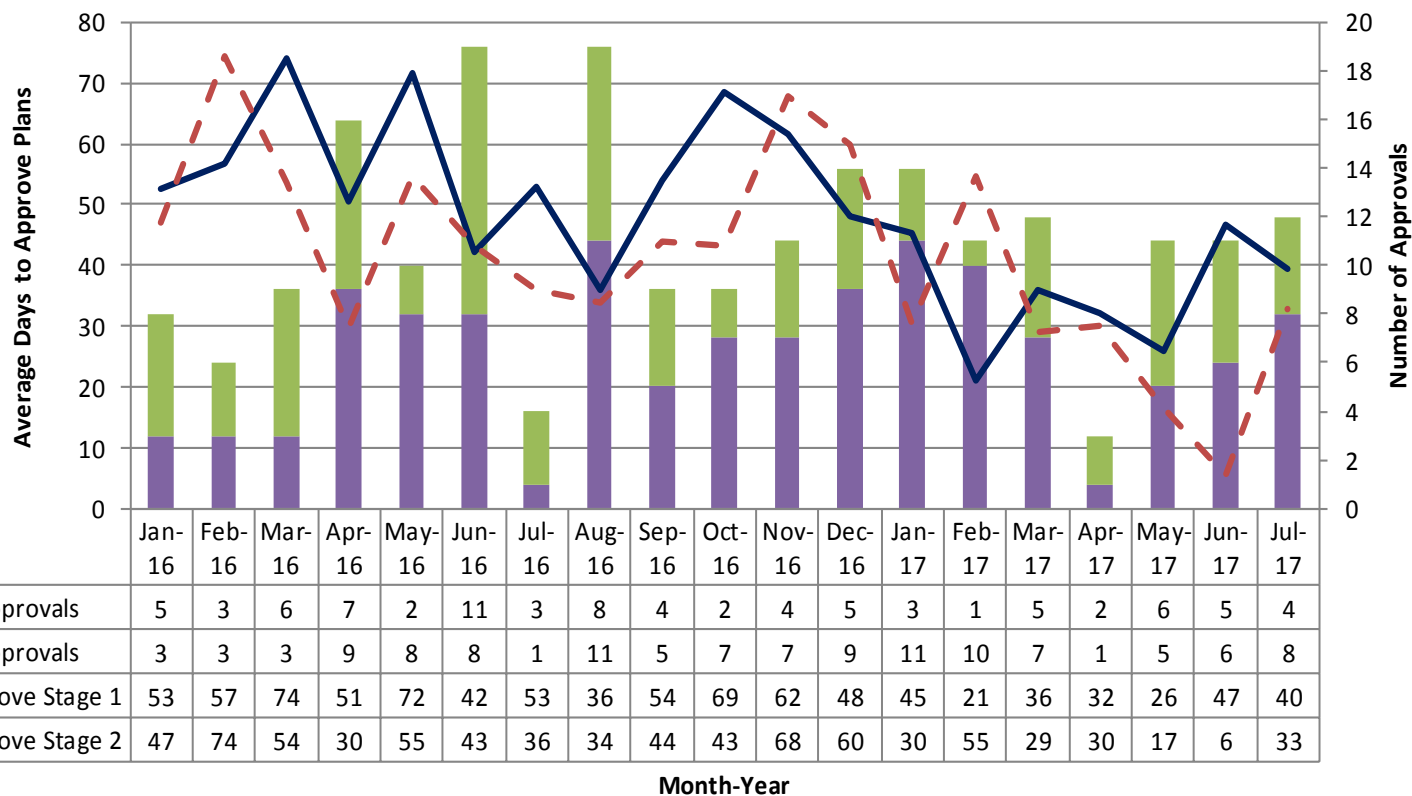
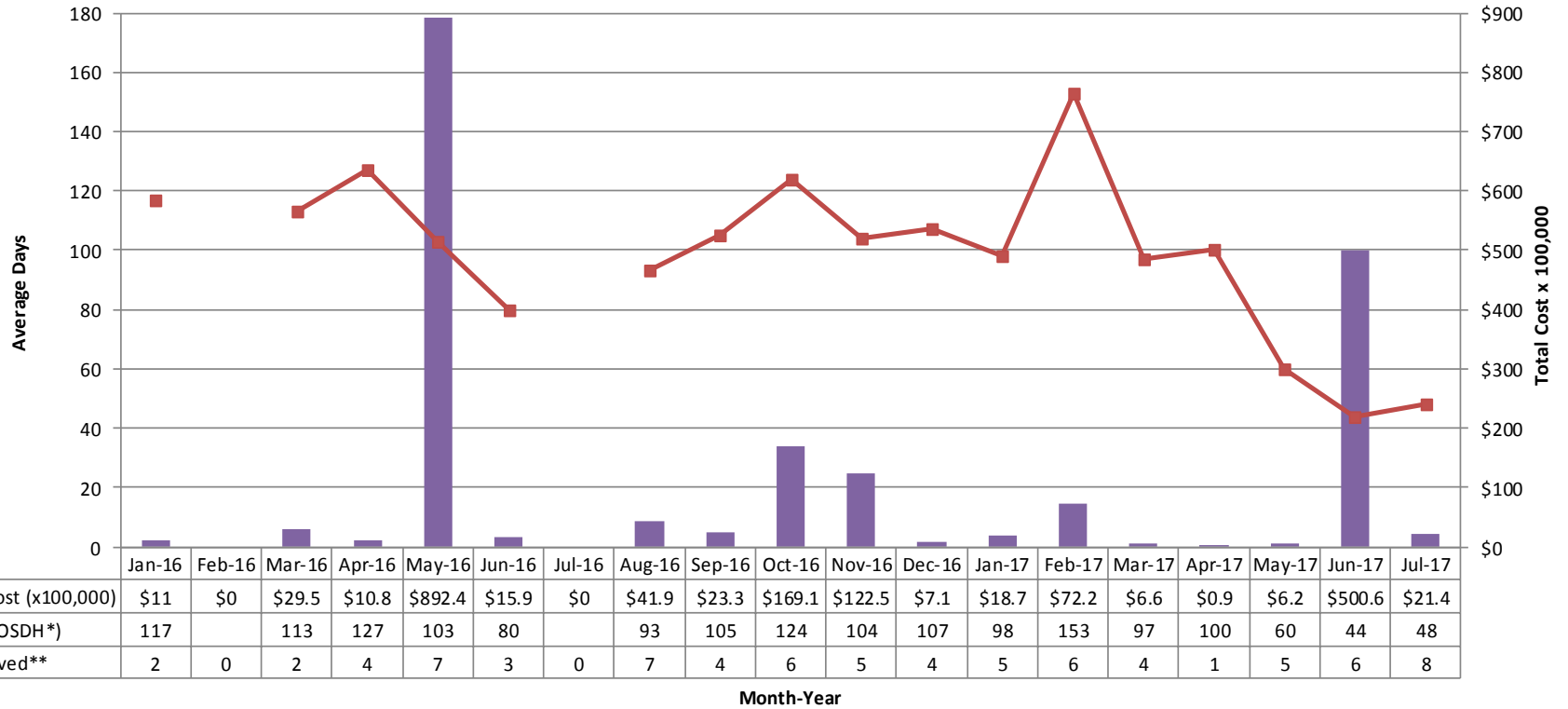


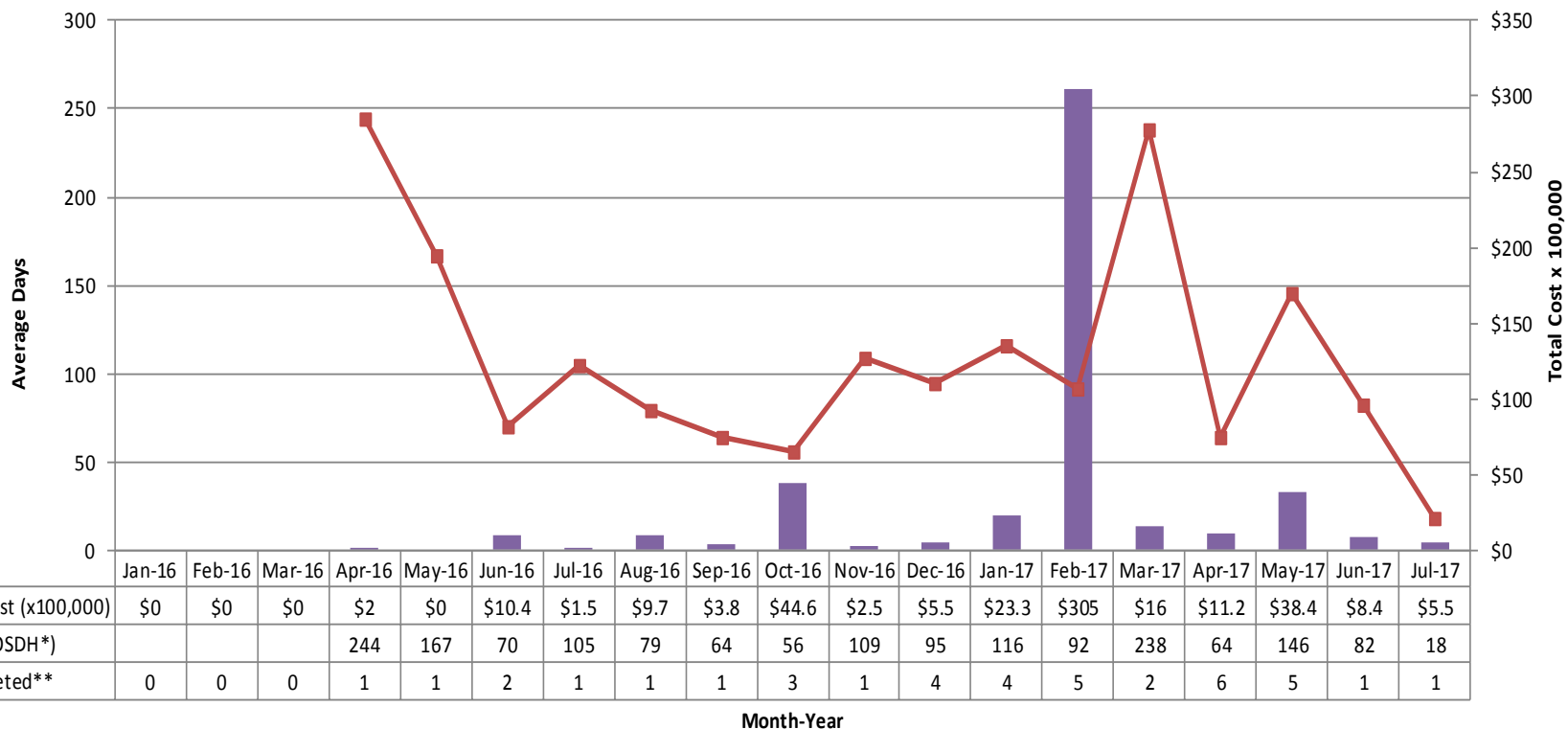
Figure 4: Average Days to Plan Approval, by Month Approved (n=79)



* Average calendar days at OSDH after accounting for days not in control of OSDH.

** Only the plans submitted on or after 7/1/2015 are included.

Figure 5: Average Days to Plan Approval for Completed Projects, by Month Inspected (n=39)



* Average calendar days from Stage 1 submittal to Stage 2 approval under the control of OSDH.

** Only the plans submitted on or after 7/1/2015 are included.