

**OKLAHOMA STATE DEPARTMENT OF HEALTH
SFY 2013 BUDGET AND EXPENDITURE FORECAST: AS OF 6/20/2013**

SUMMARY

<u>Division</u>	<u>Current Budget</u>	<u>Expenditure</u>	<u>Encumbrances</u>	<u>Forecasted Expenditures</u>	<u>Surplus/ (Deficit)</u>	<u>Performance Rate</u>
Public Health Infrastructure	\$23,645,288	\$16,990,456	\$3,739,623	\$1,857,198	\$1,058,011	95.53%
Protective Health Services	\$64,262,281	\$54,182,798	\$2,818,717	\$7,252,716	\$8,050	99.99%
Prevention & Preparedness Services	\$60,501,623	\$44,386,911	\$10,286,894	\$2,840,214	\$2,987,604	95.06%
Information Technology	\$7,769,071	\$7,098,962	\$539,015	\$0	\$131,094	98.31%
Health Improvement Services	\$21,970,213	\$15,134,207	\$2,312,045	\$3,509,489	\$1,014,472	95.38%
Community & Family Health Services	\$240,380,115	\$187,818,929	\$12,228,717	\$41,209,705	(\$877,236)	100.36%
Totals:	\$418,528,591	\$325,612,263	\$31,925,011	\$56,669,322	\$4,321,995	98.97%



Expenditure Forecast Assumptions

- Payroll forecasted through June 30, 2013 including vacancies likely to fill within the current budget period
- Encumbrances shown as actual as of the report date
- Budget forecasts do NOT include projections of sequestration or budget reductions in the current fiscal year nor have written notifications been received

Explanation of Dashboard Warning(s)

- Overall the Department is forecasted to spend 98.97% of its budget and maintain "Green Light" status through June 30, 2013.
- At this time there are no "Dashboard Warnings" as all performance rates are above 95%.

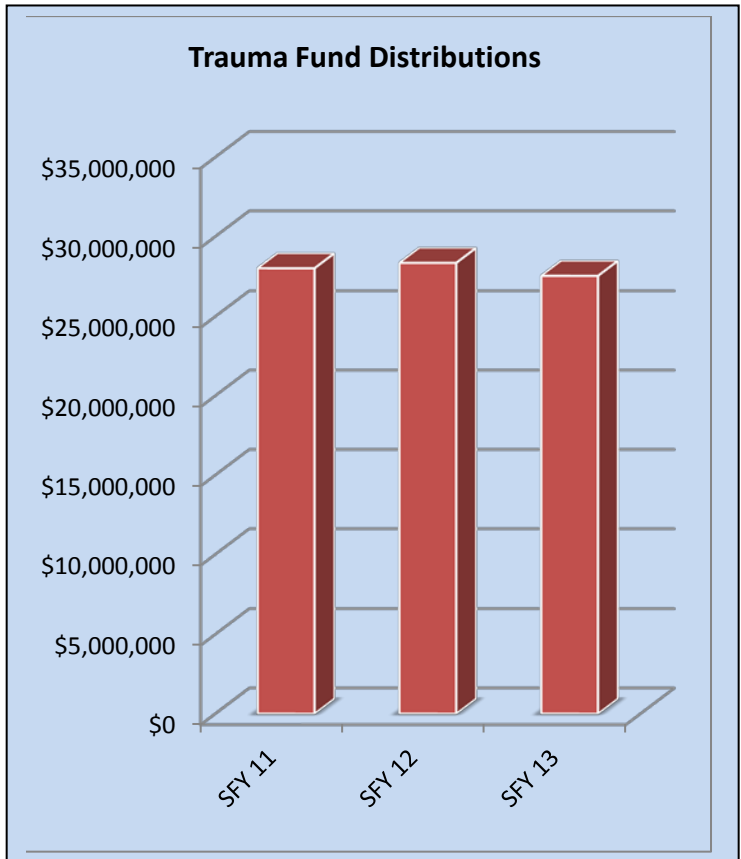
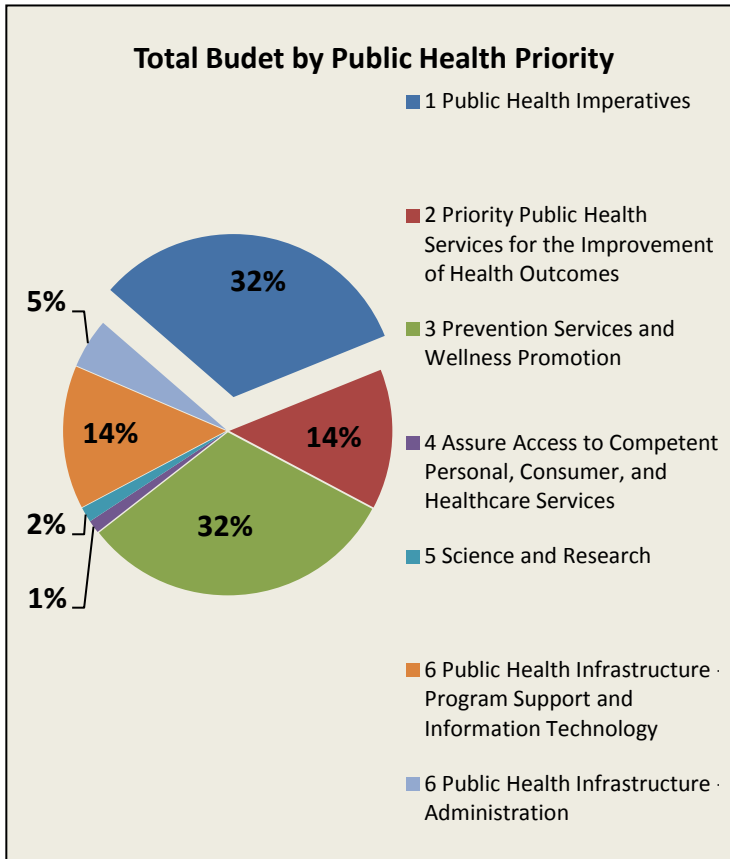
Oklahoma State Department of Health

Board of Health – Financial Brief

July 9, 2013

Public Health Imperatives Trauma Funds

Public Health Imperatives comprise 32% of the total agency budget and are characterized by services that protect the health and safety of the citizenry against infectious, occupational and environmental hazards; ensure adequate health and medical emergency preparedness and response; and offer protection to vulnerable persons against exposure to severe harm. These services are typically mandated and the public health agency is the sole provider. These services include infectious disease control programs, sanitation services, emergency preparedness and response and public protection services. These programs encompass essential public health services, numbers 1, 2, 6, & 9.



- Trauma funds comprise 6.65% of the total agency budget.
- The Trauma Care Assistance Revolving Fund (Trauma Fund) was established in 1999 and codified in Oklahoma Statute, Title 63, Chapter 1, Section 1-2530.9, for the purpose of reimbursing uncompensated costs associated with trauma care provided by trauma facilities, emergency medical providers and physicians.
- Sources of revenue for the Trauma Fund include tobacco taxes; fees from drivers license renewals & reinstatements; and fines from various traffic violations and drug-related convictions.
- Ninety percent (90%) of funds shall be used to reimburse recognized trauma facilities, licensed ambulance service providers and physicians for uncompensated trauma care expenditures.
- Ten percent (10%) of funds shall be used to support the duties of the Department as set forth in the Oklahoma Emergency Response System Development Act which includes trauma systems development.
- In SFY12, the Department processed approximately 1,089 claims from various physicians (859), hospitals (137) and EMS agencies (93) for a total reimbursement amount of approximately \$28 million.