

# OKLAHOMA COVID-19 WEEKLY REPORT

Weekly Epidemiology and Surveillance Report  
August 29 – September 4, 2021



**PURPOSE** To provide up-to-date weekly epidemiological data on COVID-19 in Oklahoma.

## SNAPSHOT

	August 29- Sept 4	Change <sup>1</sup>	Total
Cases	18,635	-5.1%	568,874
Recovered cases <sup>2</sup>	17,736	8.8%	533,334
Deaths	207	n/a	8,208

1. Change from the week of August 22-28, 2021.

2. Not deceased and 14 days after symptom onset/specimen collection. Please note that the definition for recovered was changed starting May 4, 2021 due to incomplete data on hospitalization which may result in an inaccurate estimation of the active cases.

CASES		DEATHS	
Persons aged 50 and over	Females	Persons aged 50 and over	Males
<b>32%</b>	<b>53%</b>	<b>94%</b>	<b>56%</b>
of cases	of cases	of deaths	of deaths

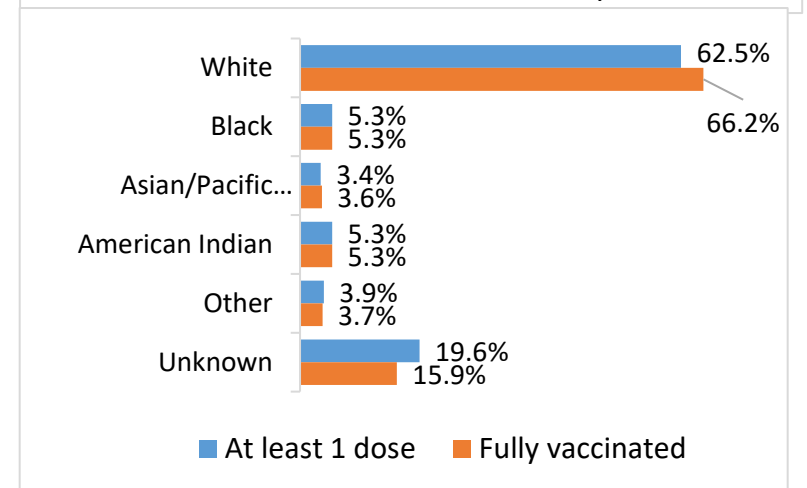
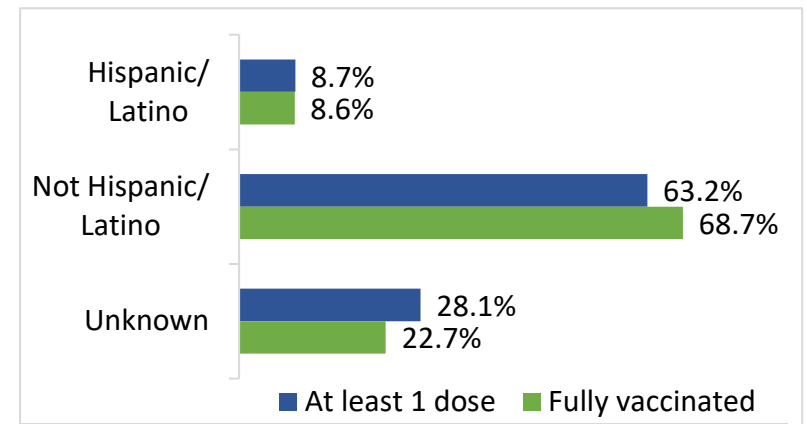
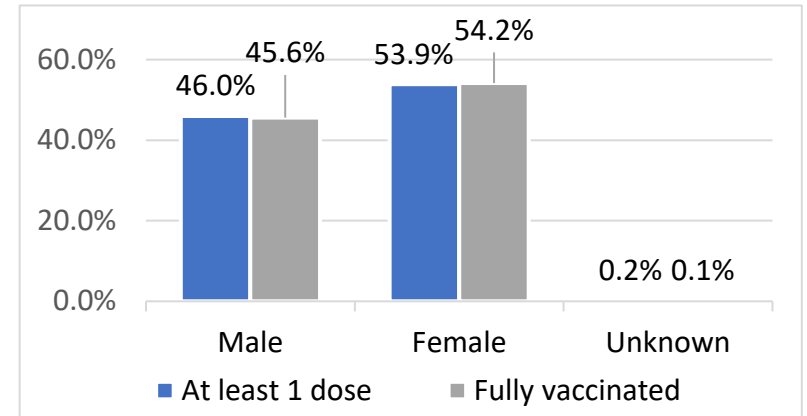
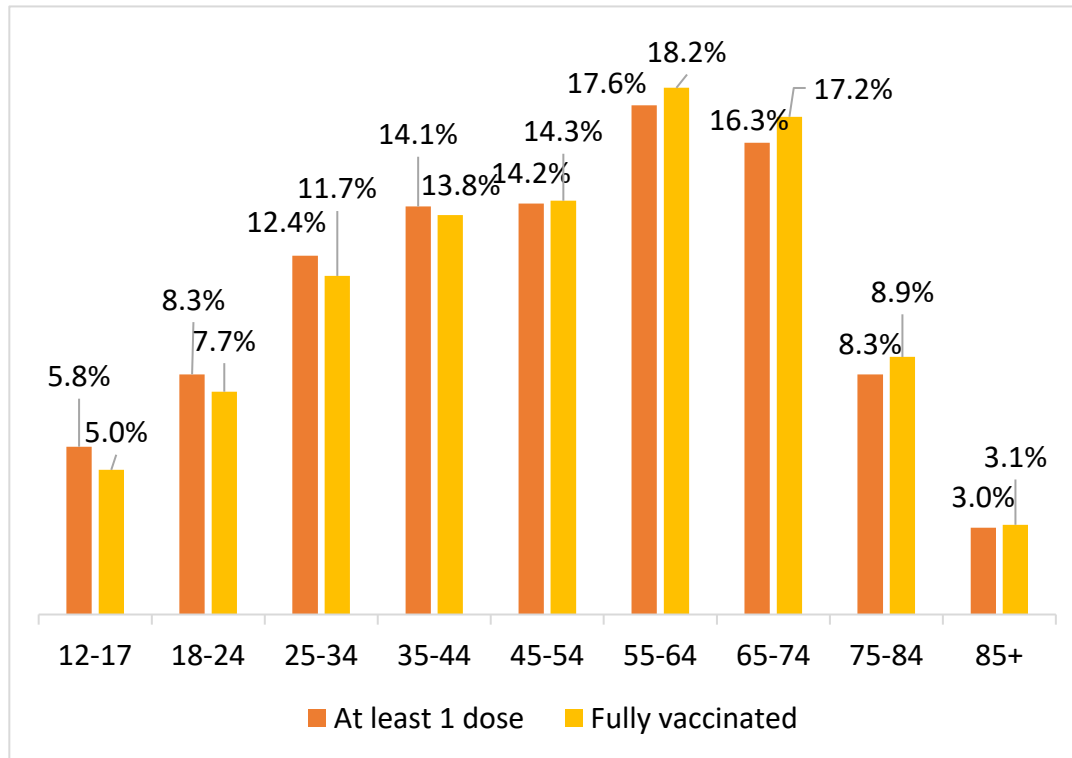
## KEY POINTS

- **18,635** cases were reported in the last week  
5.1% decrease from the week before (August 22-28)
- **208** deaths were reported in the past week
- **32,675 (5.7%)** cases have been hospitalized
- **63,831** specimens have been tested over the last 7 days according to the CDC COVID data tracker.
- **3,227,067** vaccine doses have been administered in total
- The average age of cases was **39** years and average age of individuals who died was **74** years
- The youngest case was **less than a year old** and the oldest case was **100+ years**
- The youngest individual to die from COVID-19 was **less than 15 years** and the oldest was **100+ years**

# COVID-19 VACCINE DATA BY TOTAL AND KEY METRICS

	Aug 31 – Sep 6	Total Number
Doses Administered <sup>1</sup>	62,490	3,227,067
At least 1 dose <sup>2</sup>	26,844	1,798,760
Fully vaccinated <sup>3</sup>	29,235	1,506,159

1. Doses administered amount does not include doses administered by federal entities in Oklahoma.
2. At least one does refers to individuals receiving Pfizer and Moderna COVID-19 vaccines and/or receiving single shot of J&J/Janssen Vaccine
3. Fully vaccinated refers to individuals fully vaccinated after receiving either Pfizer and/or Moderna COVID-19 vaccines (both doses) and/or receiving single shot of J&J/Janssen Vaccine

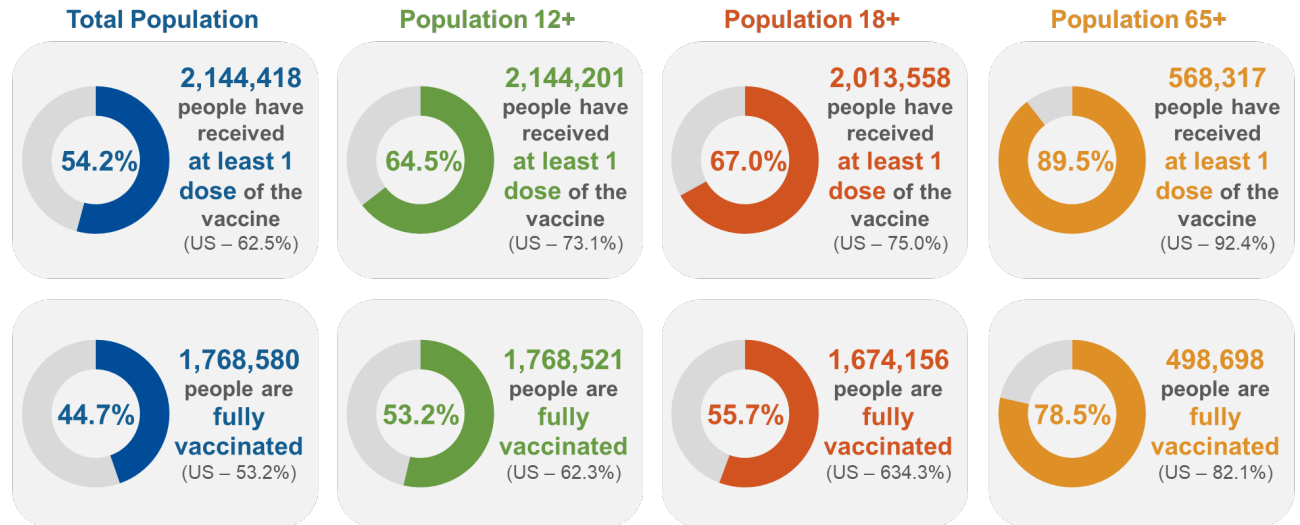


Source: COVID-19 Vaccination Reporting Specification Dataset Oklahoma State Immunization Information System (OSIIS). Data reflect information entered as of 11:59PM 9/6/2021. Data does not include doses administered by federal entities in Oklahoma

# COVID-19 VACCINATIONS IN OKLAHOMA - FEDERAL AND STATE, AS OF SEPTEMBER 6, 2021

	<b>Count*</b>	<b>Adult Rate per 100K</b>
<b>Total Doses Administered</b>	<b>3,906,825</b>	<b>122,451</b>

\*Includes state and federal administered doses.



## Percent of 12+ Population with At Least 1 Dose- Oklahoma Counties

County	At Least 1 Dose (%)	County	At Least 1 Dose (%)	County	At Least 1 Dose (%)	County	At Least 1 Dose (%)	County	At Least 1 Dose (%)
Adair	43.1%	Cotton	51.3%	Jackson	59.2%	McIntosh	61.0%	Roger Mills	39.7%
Alfalfa	49.5%	Craig	61.1%	Jefferson	47.5%	Murray	50.9%	Rogers	51.8%
Atoka	38.5%	Creek	48.9%	Johnston	48.1%	Muskogee	59.9%	Seminole	59.6%
Beaver	34.9%	Custer	56.5%	Kay	49.2%	Noble	70.1%	Sequoyah	44.0%
Beckham	47.9%	Delaware	44.8%	Kingfisher	54.5%	Nowata	49.6%	Stephens	54.9%
Blaine	53.9%	Dewey	29.7%	Kiowa	60.6%	Okfuskee	52.5%	Texas	51.2%
Bryan	42.7%	Ellis	39.8%	Latimer	36.6%	Oklahoma	74.4%	Tillman	53.7%
Caddo	72.0%	Garfield	56.8%	LeFlore	43.9%	Okmulgee	48.5%	Tulsa	70.4%
Canadian	65.6%	Garvin	54.4%	Lincoln	46.2%	Osage	39.4%	Wagoner	53.1%
Carter	52.1%	Grady	42.3%	Logan	38.0%	Ottawa	45.3%	Washington	50.8%
Cherokee	52.8%	Grant	50.9%	Love	48.5%	Pawnee	56.5%	Washita	46.4%
Choctaw	37.6%	Greer	40.8%	Major	56.3%	Payne	54.1%	Woods	46.5%
Cimarron	32.7%	Harmon	56.5%	Marshall	52.5%	Pittsburg	50.8%	Woodward	43.8%
Cleveland	59.1%	Harper	51.2%	Mayes	50.4%	Pontotoc	60.4%		
Coal	44.7%	Haskell	45.8%	McClain	55.7%	Pottawatomie	54.0%		
Comanche	66.1%	Hughes	50.9%	McCurtain	40.4%	Pushmataha	38.1%		

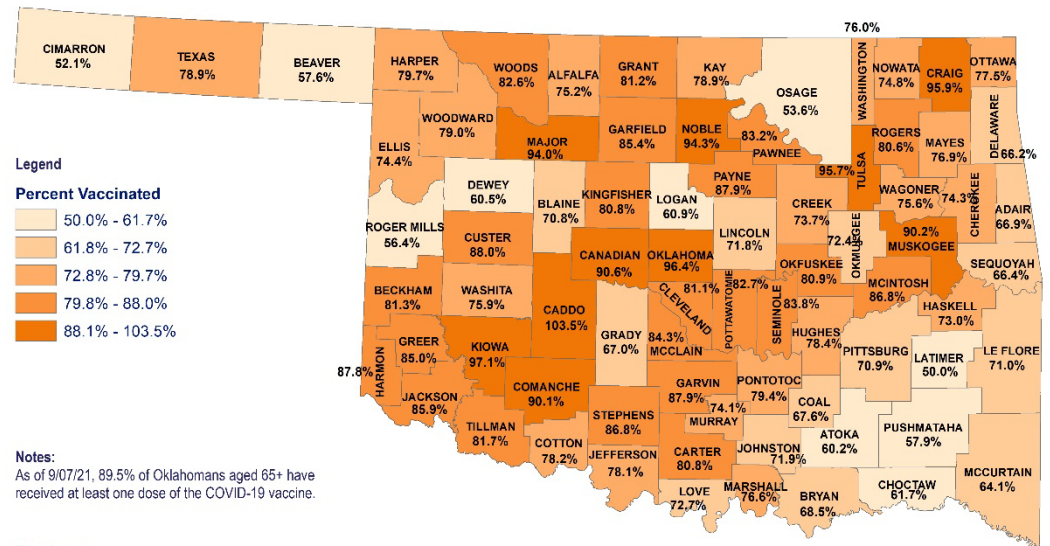
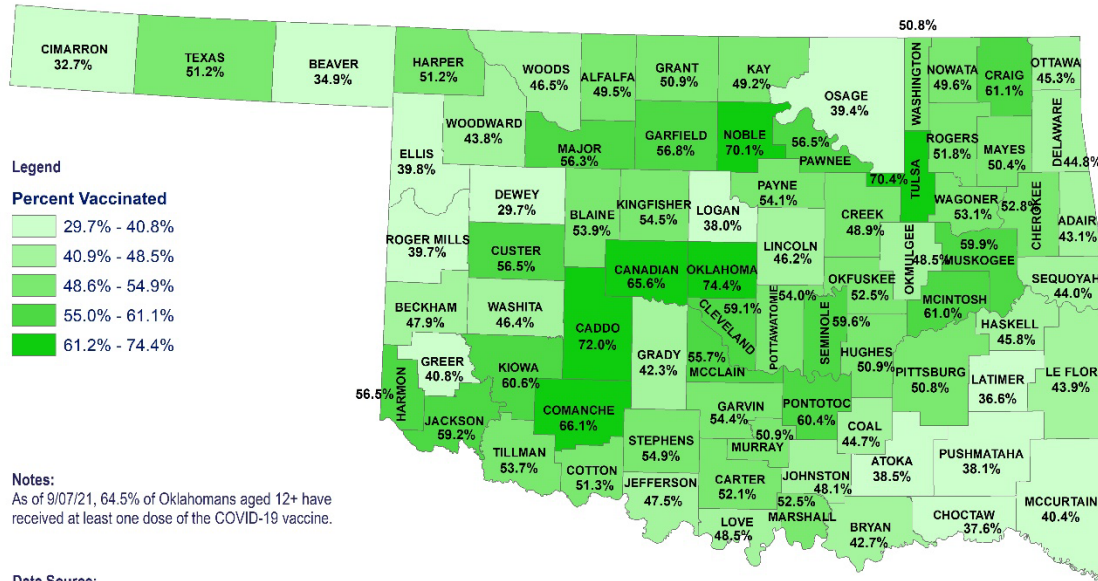
Source: CDC COVID Data Tracker – COVID-19 Vaccinations in the United States and COVID-19 Integrated County View. Posted: 9/7/2021

## COVID- 19 VACCINE DATA

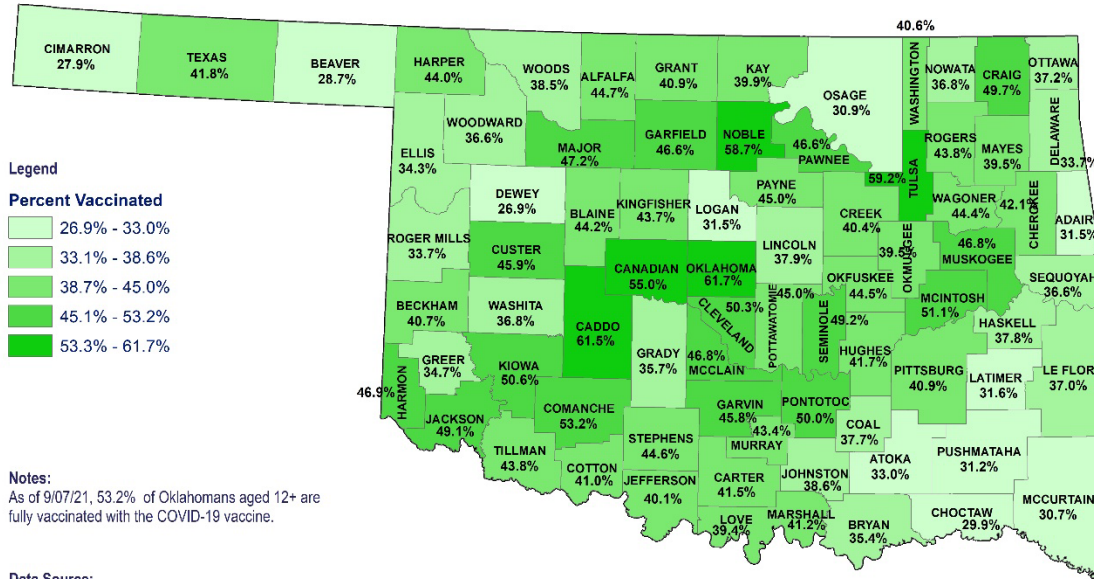
		Total Population >12 years of age	People who received at least 1 dose	People who are fully vaccinated
<b>Oklahoma</b>		3,325,223	1,798,760 (54.1%)	1,506,159 (45.3%)
<b>Gender</b>				
	Male	1,637,286 (49.2%)	826,820 (50.5%)	687,456 (42.0%)
	Female	1,687,937 (50.8%)	969,215 (57.4%)	816,922 (48.4%)
	Unknown		2,725	1,781
<b>Age group</b>				
	12-17	320,490 (9.6%)	103,913 (32.4%)	76,025 (23.7%)
	18-24	380,905 (11.5%)	149,460 (39.2%)	116,503 (30.6%)
	25-34	543,593 (16.3%)	222,527 (40.9%)	176,564 (32.5%)
	35-44	497,873 (15.0%)	253,158 (50.8%)	207,377 (41.7%)
	45-54	453,536 (13.6%)	255,968 (56.4%)	214,836 (47.4%)
	55-64	493,694 (14.8%)	316,927 (64.2%)	274,649 (55.6%)
	65-74	368,050 (11.1%)	292,695 (79.5%)	259,461 (70.5%)
	75-84	192,919 (5.8%)	150,160 (77.8%)	133,717 (69.3%)
	85+	74,163 (2.2%)	53,853 (72.6%)	47,008 (63.4%)
<b>Race</b>				
	White	2,610,851 (78.5%)	1,123,859 (43.0%)	996,408 (38.2%)
	Black	282,592 (8.5%)	95,433 (33.8%)	80,167 (28.4%)
	Asian/PI	94,874 (2.9%)	61,761 (65.1%)	54,456 (57.4%)
	American Indian	336,906 (10.1%)	95,528 (28.4%)	80,029 (23.8%)
	Other	-	70,416	55,325
	Unknown	-	351,763	239,774
<b>Ethnicity</b>				
	Hispanic or Latino	323,153 (9.7%)	156,194 (48.3%)	128,949 (39.9%)
	Not Hispanic or Latino	3,002,070 (90.3%)	1,136,695 (37.9%)	1,034,719 (34.5%)
	Unknown	-	505,871	342,491

Note: Fully vaccinated refers to individuals completing series after receiving either Pfizer and/or Moderna COVID-19 vaccines (both doses) and/or receiving single shot of J&J/Janssen Vaccine  
 Data Source: 1. Single-race Population Estimates, United States, 2010-2019. July 1st resident population by state, age, sex, single-race, and Hispanic origin, on CDC WONDER Online Database. Vintage 2019 estimates released by U.S. Census Bureau on June 25, 2020 COVID-19. 2. Vaccination Reporting Specification (CVRS) Dataset - Oklahoma State Immunization Information System (OSIIS); Data reflect information entered as of 11:59PM 9/6/2021. Data does not include doses administered by federal entities in Oklahoma

# OKLAHOMA COVID-19 AT LEAST 1 DOSE COUNTY LEVEL VACCINE ADMINISTRATION FOR AGES 12+ AND 65+



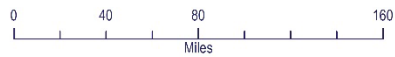
# OKLAHOMA COVID-19 FULLY VACCINATED COUNTY LEVEL VACCINE ADMINISTRATION FOR AGES 12+ AND 65+



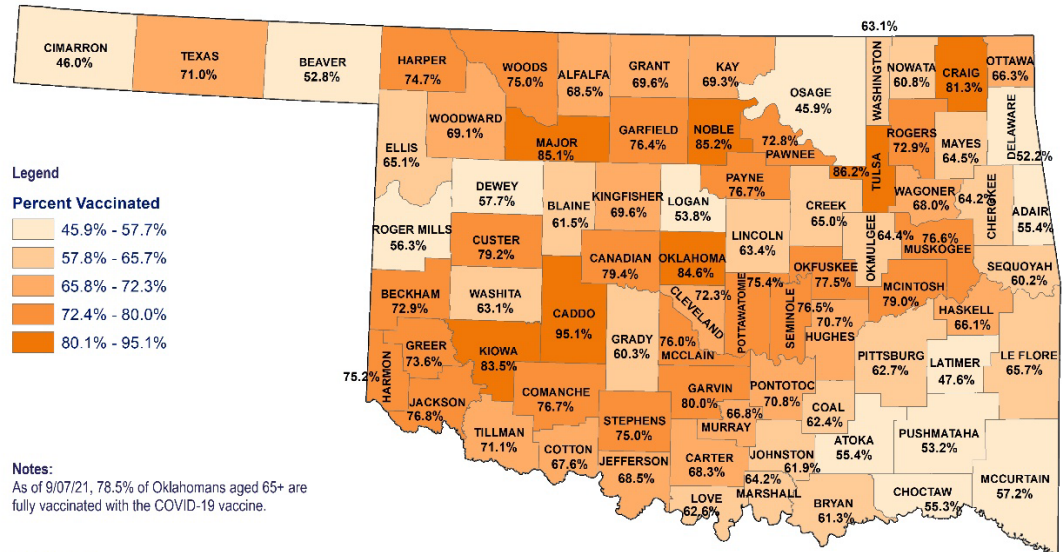
**Notes:**  
As of 9/07/21, 53.2% of Oklahomans aged 12+ are fully vaccinated with the COVID-19 vaccine.

**Data Source:**  
CDC COVID Data Tracker, County Level Vaccination Data for Oklahoma. Posted 9/07/21.

Projection/Coordinate System: USGS Albers Equal Area Conic



**Disclaimer:** This map is a compilation of records, information and data from various city, county and state offices and other sources, affecting the areas shown, and is the best representation of the data available at the time. The map and data are to be used for reference purposes only. The user acknowledges and accepts all inherent limitations of the map, including the fact that the data are dynamic and in a constant state of maintenance.



**Notes:**  
As of 9/07/21, 78.5% of Oklahomans aged 65+ are fully vaccinated with the COVID-19 vaccine.

**Data Source:**  
CDC COVID Data Tracker, County Level Vaccination Data for Oklahoma. Posted 9/07/21.

Projection/Coordinate System: USGS Albers Equal Area Conic

Created: 09.07.2021



**Disclaimer:** This map is a compilation of records, information and data from various city, county and state offices and other sources, affecting the areas shown, and is the best representation of the data available at the time. The map and data are to be used for reference purposes only. The user acknowledges and accepts all inherent limitations of the map, including the fact that the data are dynamic and in a constant state of maintenance.

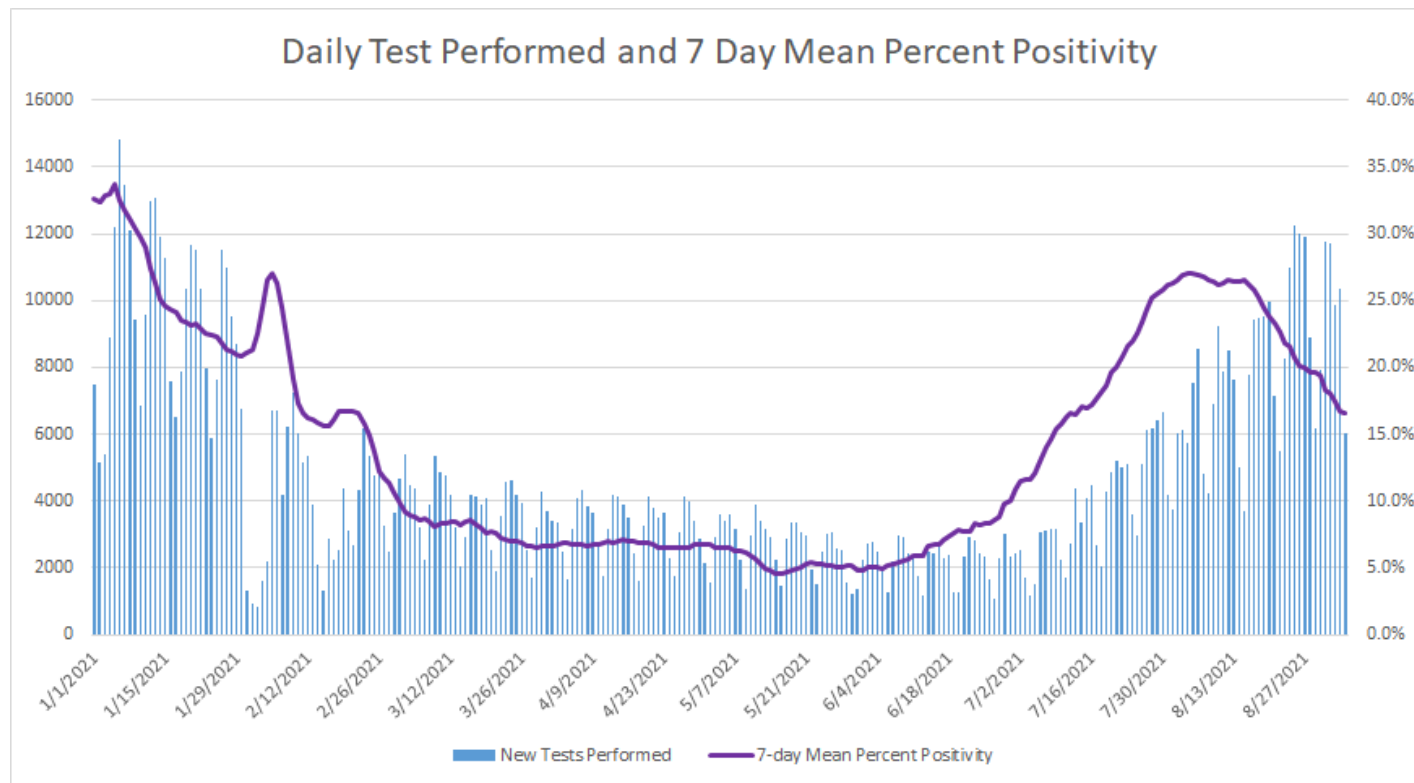


# DISEASE TESTING

Aug 29 – Sept 4	
Specimens tested, count	63,831
Specimens positive, count	17,730
Percent positive	16.6%

Source: CDC COVID Data Tracker CDC | Data as of: Tuesday, September 7, 2021 1:20 PM ET. Posted: Tuesday, September 7, 2021 2:27 PM ET

## COVID-19 DAILY TESTS PERFORMED AND 7 DAY MEAN PERCENT POSITIVITY



Oklahoma, September 07, 2021

Source: CDC COVID Data Tracker CDC | Data as of: Tuesday, September 7, 2021 1:20 PM ET. Posted: Tuesday, September 7, 2021 2:27 PM ET

## COVID-19 VARIANT STRAINS

Genetic variants of SARS-CoV-2 have been emerging and circulating around the world throughout the COVID-19 pandemic.

- A variant has one or more mutations that differentiate it from other variants in circulation. As expected, multiple variants of SARS-CoV-2 have been documented in the United States and globally throughout this pandemic.

Three classes of variants:

- Variant of Interest
  - A variant with specific genetic markers that have been associated with changes to receptor binding, reduced neutralization by antibodies generated against previous infection or vaccination, reduced efficacy of treatments, potential diagnostic impact, or predicted increase in transmissibility or disease severity.
- Variant of Concern
  - A variant for which there is evidence of an increase in transmissibility, more severe disease (increased hospitalizations or deaths), significant reduction in neutralization by antibodies generated during previous infection or vaccination, reduced effectiveness of treatments or vaccines, or diagnostic detection failures.
- Variant of High Consequence
  - A variant of high consequence has clear evidence that prevention measures or medical countermeasures (MCMs) have significantly reduced effectiveness relative to previously circulating variants.

<b>SARS-CoV-2 Sequencing Data, Oklahoma, January 1, 2021-September 5, 2021</b>		
<b>Variant Designation and Strain Name</b>	<b>SARS-CoV-2 Strain Count</b>	<b>SARS-CoV-2 Strain Percentage</b>
No Concern	<b>397</b>	<b>10.2%</b>
Variant of Concern	<b>3,428</b>	<b>88.2%</b>
B.1.1.7 (Alpha)	469	13.7%
B.1.351 (Beta)	7	0.2%
B.1.617.2 (Delta)	2,928	85.4%
P.1 (Gamma)	24	0.7%
Variant of Interest	<b>18</b>	<b>0.5%</b>
B.1.525 (Eta)	2	11.1%
B.1.526/526.1 (Iota)	15	83.3%
B.1.617.1 (Kappa)	1	5.6%
Variant to Watch	<b>44</b>	<b>1.1%</b>
C.37 (Lambda)	44	100.0%
<b>Grand Total</b>	<b>3,887</b>	<b>100.0%</b>

Additional information on variant classifications and definitions can be found [here](#).



## COVID-19 VACCINE BREAKTHROUGH INFECTIONS IN OKLAHOMA

- Total Number Reported Vaccine Breakthrough Cases: 7,334

### VACCINE BREAKTHROUGH CASES, HOSPITALIZATIONS AND DEATHS AS OF SEPTEMBER 6, 2021

Vaccine Brand	Number of Fully Vaccinated OK Residents*	Number of Vaccine Breakthrough Cases**	Percent of Vaccine Breakthrough Cases among Fully Vaccinated OK Residents	Hospitalizations	Deaths
Johnson and Johnson	114,248	714	0.62%	53	10
Moderna	720,735	2365	0.33%	140	26
Pfizer	925,958	4255	0.46%	248	50
<b>Total</b>	<b>1,760,941</b>	<b>7334</b>	<b>0.42%</b>	<b>441</b>	<b>86</b>

\*Vaccine Denominator: Represents the number of people who have received the second dose in a two-dose COVID-19 vaccine series or one dose of the single-shot Johnson and Johnson's Janssen COVID-19 vaccine.

\*\*Vaccine breakthrough cases is defined as an individual with a COVID-19 positive laboratory results (PCR/Antigen) and documentation of COVID-19 vaccination that meets the definition of fully vaccinated. (Individuals are considered fully vaccinated  $\geq 2$  weeks after receiving the last dose in the COVID-19 vaccine series.)

Source: CDC COVID Data Tracker—COVID-19 Vaccinations in the United States. Accessed: 09/06/21

### PROPORTION OF BREAKTHROUGH CASES BY MONTH OF ONSET AS OF SEPTEMBER 6, 2021

Month	Breakthrough Cases**	Unvaccinated Cases	Total	Percent of Cases Vaccinated	Percent of Cases Unvaccinated
February 2021	7	23336	23343	0.03%	99.97%
March 2021	41	9126	9167	0.45%	99.55%
April 2021	195	6610	6805	2.87%	97.13%
May 2021	260	4220	4480	5.80%	94.20%
June 2021	447	5688	6135	7.29%	92.71%
July 2021	2623	29203	31826	8.24%	91.76%
August 2021	3670	68525	72195	5.08%	94.92%
September 2021	91	4719	4810	1.89%	98.11%

\*\*Vaccine breakthrough case is defined as an individual with a COVID-19 positive laboratory results (PCR/Antigen) and documentation of COVID-19 vaccination that meets the definition of fully vaccinated. (Individuals are considered fully vaccinated  $\geq 2$  weeks after receiving the last dose in the COVID-19 vaccine series.)

## DISTRIBUTION OF RECENT COVID-19 HOSPITAL ADMISSIONS BY VACCINATION STATUS AND AGE GROUP AS OF SEPTEMBER 6, 2021

Vaccination Status	Age Group	Hospital Admissions in the last 30 days**	Percent
Non-Vaccinated	Under 1- 4	39	1.3%
	5-17	59	2.0%
	18-35	381	13.2%
	36-49	556	19.2%
	50-64	873	30.2%
	65+	980	33.9%
	Unknown	3	0.1%
	Total	2,891	93.9%
Fully Vaccinated*	18-35	4	2.1%
	36-49	9	4.8%
	50-64	40	21.3%
	65+	135	71.8%
	Total	188	6.1%
Total	3,079		

\*Vaccine breakthrough cases is defined as an individual with a COVID-19 positive laboratory results (PCR/Antigen) and documentation of COVID-19 vaccination that meets the definition of fully vaccinated. (Individuals are considered fully vaccinated  $\geq 2$  weeks after receiving the last dose in the COVID-19 vaccine series.)

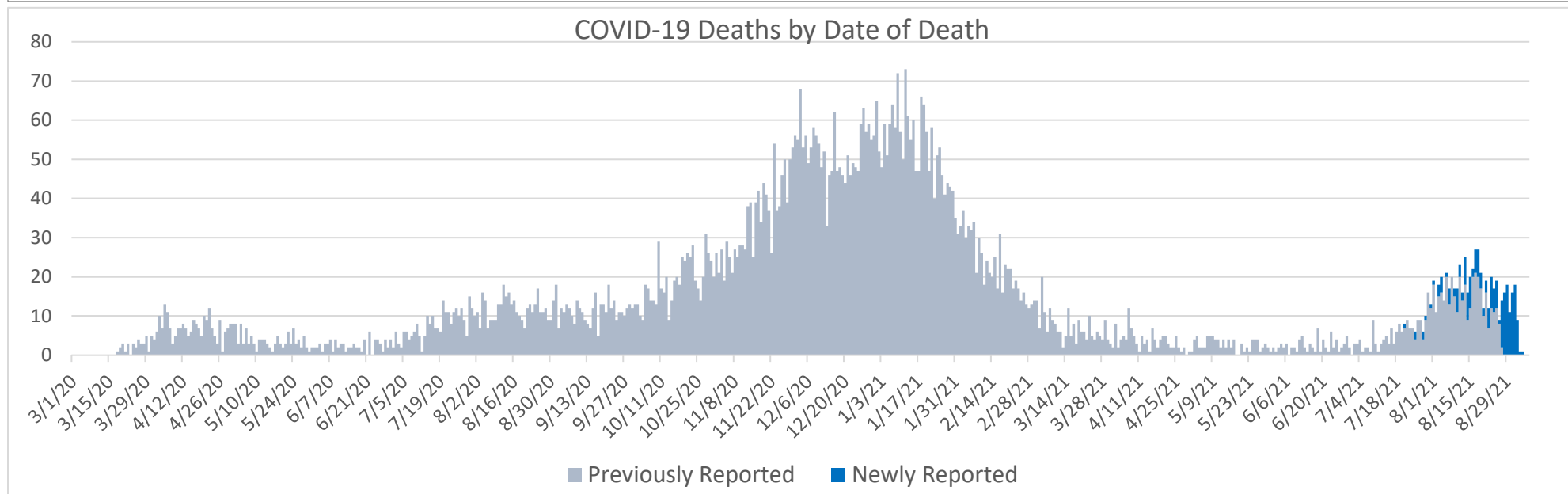
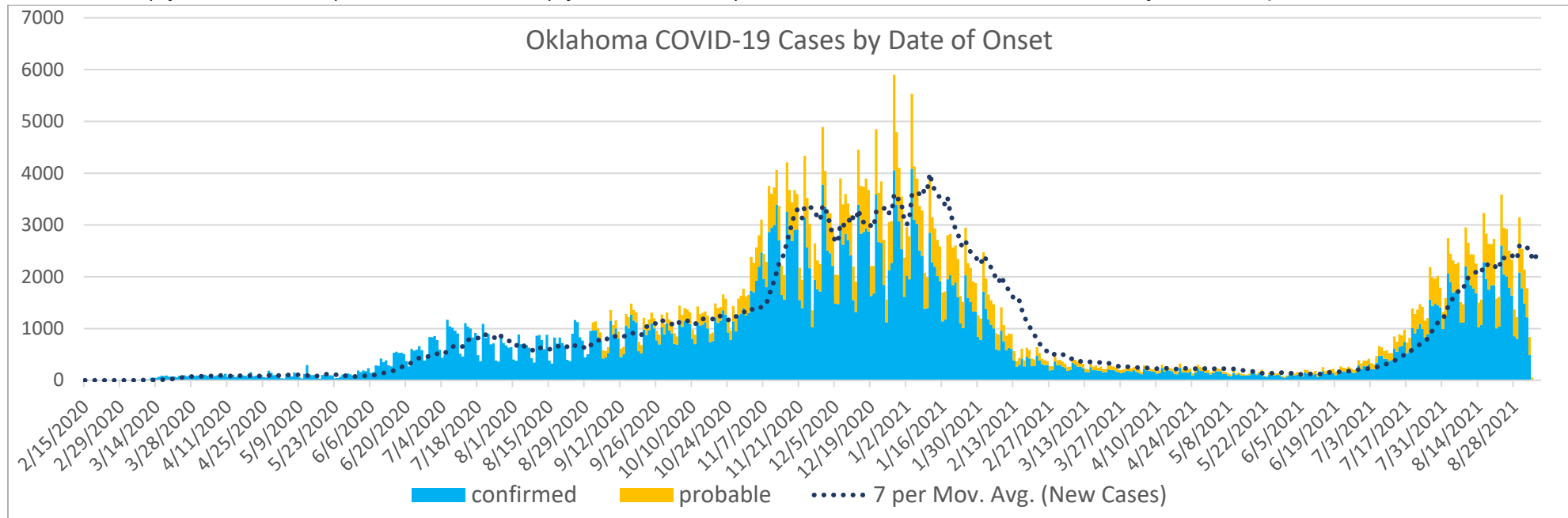
\*\*Numbers based on hospital admission date within the past 30 days.

## EPIDEMIOLOGICAL ESTIMATES

	Estimate	Notes / Interpretation
<b>Cases</b>		
Cumulative incidence	14,376.5 (per 100,000 persons)	From March 7, 2020 to September 4, 2021 there were about 14,376 (per 100,000) new cases of COVID-19 in Oklahoma.
Absolute change in cumulative incidence from previous week	-25.5 (per 100,000 persons)	Compared to August 22- August 28 there were 25.5 (per 100,000) less cases of COVID-19 reported in Oklahoma during the past week (August 29- September 4).
<b>Disease Severity</b>		
Case-fatality risk (crude)	1.4%	The estimate is not adjusted for the lag time from reporting to death (i.e., delay between the time someone dies and the time their death is reported). The fatality estimate could be lower due to cases that were undiagnosed or had milder symptoms.
Cumulative Hospitalization rate (overall)	825.8 (per 100,000 persons)	About 825 people per 100,000 have ever been hospitalized for COVID-19 during this outbreak.

# CASES AND DEATHS

New cases (by date of onset) and new deaths (by date of death) of COVID-19 in Oklahoma, February 2020–September 2021



Please note the different axes for new cases (top—from 0 to 7,000 for new cases) and new deaths (bottom—from 0 to 80 for new deaths). Additionally, a 7-day lag has been applied to the COVID-19 case trend line based on information.

## DEMOGRAPHIC INFORMATION AS OF SEPTEMBER 7, 2021

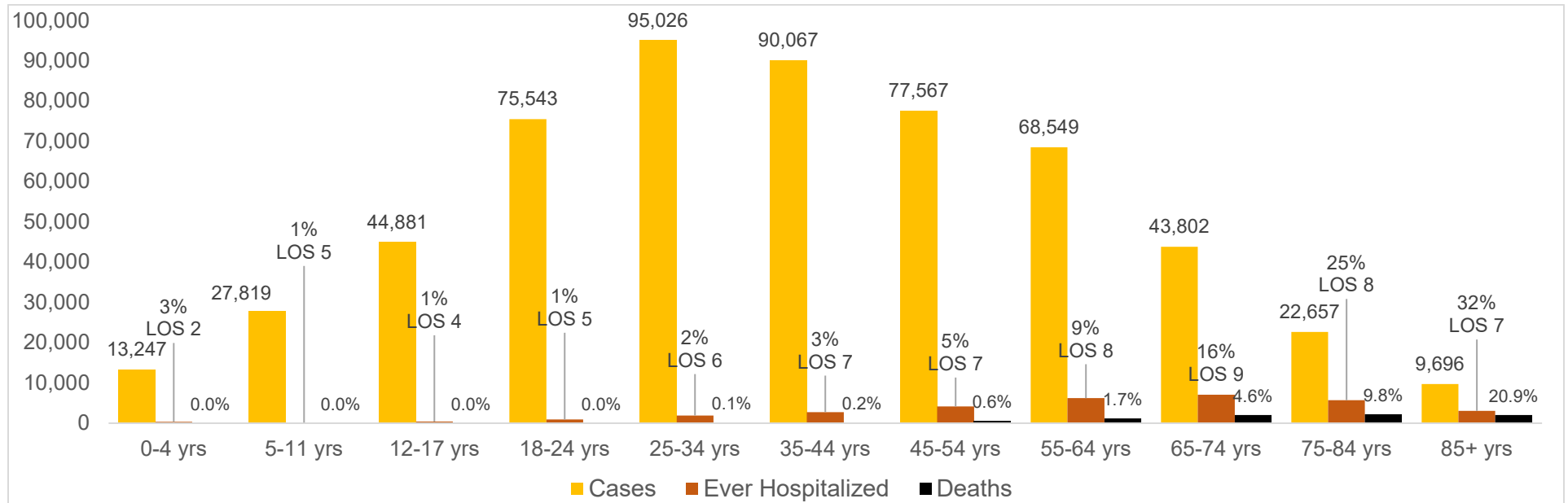
		Cases count (%) <sup>1</sup>		Deaths count (%) <sup>1</sup>		Cumulative Incidence Rate <sup>2</sup>	Cumulative Mortality Rate <sup>2</sup>
<b>Oklahoma</b>		<b>568,874</b>		<b>8,208</b>		<b>14,376.5</b>	<b>207.4</b>
<b>Gender</b>							
	Male	<b>268,285</b>	<b>(47.2)</b>	<b>4,619</b>	<b>(56.3)</b>	<b>13,736.7</b>	<b>236.5</b>
	Female	<b>300,589</b>	<b>(52.8)</b>	<b>3,589</b>	<b>(43.7)</b>	<b>15,104.7</b>	<b>180.3</b>
	Unknown	<b>0</b>	<b>(0.0)</b>	<b>0</b>	<b>(0.0)</b>		
<b>Age group</b>							
	Under 1- 4	<b>13,247</b>	<b>(2.3)</b>	<b>0</b>	<b>(0.0)</b>	<b>5,184.1</b>	<b>0.0</b>
	5-11	<b>27,819</b>	<b>(4.9)</b>	<b>0</b>	<b>(0.0)</b>	<b>7,394.4</b>	<b>0.0</b>
	12-17	<b>44,881</b>	<b>(7.9)</b>	<b>4</b>	<b>(0.0)</b>	<b>14,003.9</b>	<b>1.2</b>
	18-24	<b>75,543</b>	<b>(13.3)</b>	<b>11</b>	<b>(0.1)</b>	<b>19,832.5</b>	<b>2.9</b>
	25-34	<b>95,026</b>	<b>(16.7)</b>	<b>68</b>	<b>(0.8)</b>	<b>17,481.1</b>	<b>12.5</b>
	35-44	<b>90,067</b>	<b>(15.8)</b>	<b>185</b>	<b>(2.3)</b>	<b>18,090.4</b>	<b>37.2</b>
	45-54	<b>77,567</b>	<b>(13.6)</b>	<b>487</b>	<b>(5.9)</b>	<b>17,102.7</b>	<b>107.4</b>
	55-64	<b>68,549</b>	<b>(12.0)</b>	<b>1,186</b>	<b>(14.4)</b>	<b>13,884.9</b>	<b>240.2</b>
	65-74	<b>43,802</b>	<b>(7.7)</b>	<b>2,021</b>	<b>(24.6)</b>	<b>11,901.1</b>	<b>549.1</b>
	75-84	<b>22,657</b>	<b>(4.0)</b>	<b>2,223</b>	<b>(27.1)</b>	<b>11,744.3</b>	<b>1,152.3</b>
	85+	<b>9,696</b>	<b>(1.7)</b>	<b>2,023</b>	<b>(24.6)</b>	<b>13,073.9</b>	<b>2,727.8</b>
	Unknown	<b>20</b>	<b>(0.0)</b>				
<b>Race</b>							
	American Indian or Alaska Native	<b>57,125</b>	<b>(10.0)</b>	<b>722</b>	<b>(8.8)</b>	<b>18,596.4</b>	<b>235.0</b>
	Asian or Pacific Islander	<b>9,676</b>	<b>(1.7)</b>	<b>94</b>	<b>(1.1)</b>	<b>10,926.8</b>	<b>106.2</b>
	Black or African American	<b>32,961</b>	<b>(5.8)</b>	<b>536</b>	<b>(6.5)</b>	<b>11,457.5</b>	<b>186.3</b>
	Multiracial/Other	<b>19,795</b>	<b>(3.5)</b>	<b>225</b>	<b>(2.7)</b>	<b>4,784.2</b>	<b>54.4</b>
	White	<b>320,297</b>	<b>(56.3)</b>	<b>5,956</b>	<b>(72.6)</b>	<b>11,254.7</b>	<b>209.3</b>
	Unknown	<b>129,020</b>	<b>(22.7)</b>	<b>675</b>	<b>(8.2)</b>		
<b>Ethnicity</b>							
	Hispanic or Latino	<b>54,243</b>	<b>(9.5)</b>	<b>415</b>	<b>(5.1)</b>	<b>12,641.8</b>	<b>96.7</b>
	Not Hispanic or Latino	<b>359,175</b>	<b>(63.1)</b>	<b>6,811</b>	<b>(83.0)</b>	<b>10,221.3</b>	<b>193.8</b>
	Unknown/Other	<b>155,456</b>	<b>(27.3)</b>	<b>982</b>	<b>(12.0)</b>		

1. Percentages may not add up to 100 due to rounding. 2. Rate per 100,000 population based on 2019 Census Population data.

## NEW CASES, HOSPITALIZATIONS, AND DEATHS BY AGE GROUP FOR WEEK OF AUG 29-SEP 4

Age group	Percentage of Population Fully Vaccinated	New Cases (%)	New Hospitalizations (%)	New Deaths (%)
Under 1- 4	-	<b>785 (4.2%)</b>	<b>12 (1.5%)</b>	<b>0 (0.0%)</b>
5-11	-	<b>2339 (12.6%)</b>	<b>4 (0.5%)</b>	<b>0 (0.0%)</b>
12-17	<b>23.7%</b>	<b>2422 (13.0%)</b>	<b>11 (1.3%)</b>	<b>0 (0.0%)</b>
18-24	<b>30.6%</b>	<b>2276 (12.2%)</b>	<b>27 (3.3%)</b>	<b>0 (0.0%)</b>
25-34	<b>32.5%</b>	<b>2800 (15.0%)</b>	<b>60 (7.3%)</b>	<b>5 (2.4%)</b>
35-44	<b>41.7%</b>	<b>2732 (14.7%)</b>	<b>96 (11.7%)</b>	<b>14 (6.8%)</b>
45-54	<b>47.4%</b>	<b>1944 (10.4%)</b>	<b>129 (15.7%)</b>	<b>24 (11.6%)</b>
55-64	<b>55.6%</b>	<b>1631 (8.8%)</b>	<b>171 (20.9%)</b>	<b>51 (24.6%)</b>
65-74	<b>70.5%</b>	<b>1036 (5.6%)</b>	<b>152 (18.5%)</b>	<b>47 (22.7%)</b>
75-84	<b>69.3%</b>	<b>497 (2.7%)</b>	<b>111 (13.5%)</b>	<b>45 (21.7%)</b>
85+	<b>63.4%</b>	<b>167 (0.9%)</b>	<b>47 (5.7%)</b>	<b>21 (10.1%)</b>
Unknown	-	<b>6 (0.0%)</b>	<b>0 (0.0%)</b>	<b>0 (0.0%)</b>

## CUMULATIVE CASES, PERCENT HOSPITALIZED, AVERAGE LENGTH OF STAY (JULY 2021 CASES) AND DEATHS BY AGE GROUP



## AT-RISK SETTINGS

### HEALTHCARE & NON-HEALTHCARE

Status	Non-Healthcare Worker count (%)	Healthcare Worker count (%)
Active	27151 (4.9)	181 (1.0)
Deceased	8,126 (1.5)	82 (0.5)
Recovered	515,725 (93.6)	17,609 (98.5)
<b>Total</b>	<b>551,002</b>	<b>17,872</b>

### LONG TERM CARE (LTC) FACILITIES<sup>2</sup>

	Cases (%)	Deaths (%)
Residents	8,674 (62.3)	1,721 (98.7)
Staff	5,260 (37.7)	22 (1.3)
<b>Total</b>	<b>13,934</b>	<b>1,743</b>

<sup>2</sup>Long term care facility or nursing home.

### CORRECTIONAL FACILITIES<sup>1</sup>

	Cases (%)	Deaths (%)
Inmates	5,224 (75.8%)	55 (91.7%)
Staff	1,664 (24.2%)	5 (8.3%)
<b>Total</b>	<b>6,888</b>	<b>60</b>

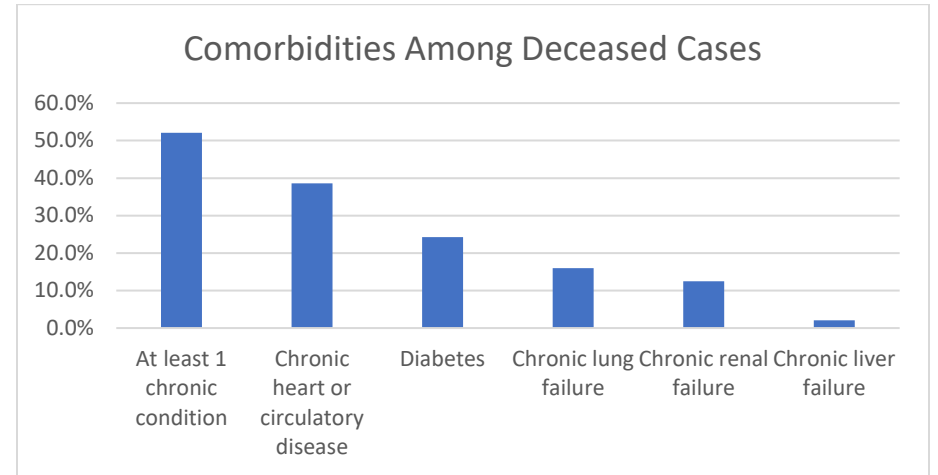
<sup>1</sup>Correctional facilities include prisons, jails, and juvenile detention center

*Detailed counts of LTC Cases by County and Facility can be found at the end of this report.*

## COMORBIDITIES AMONG DECEASED CASES

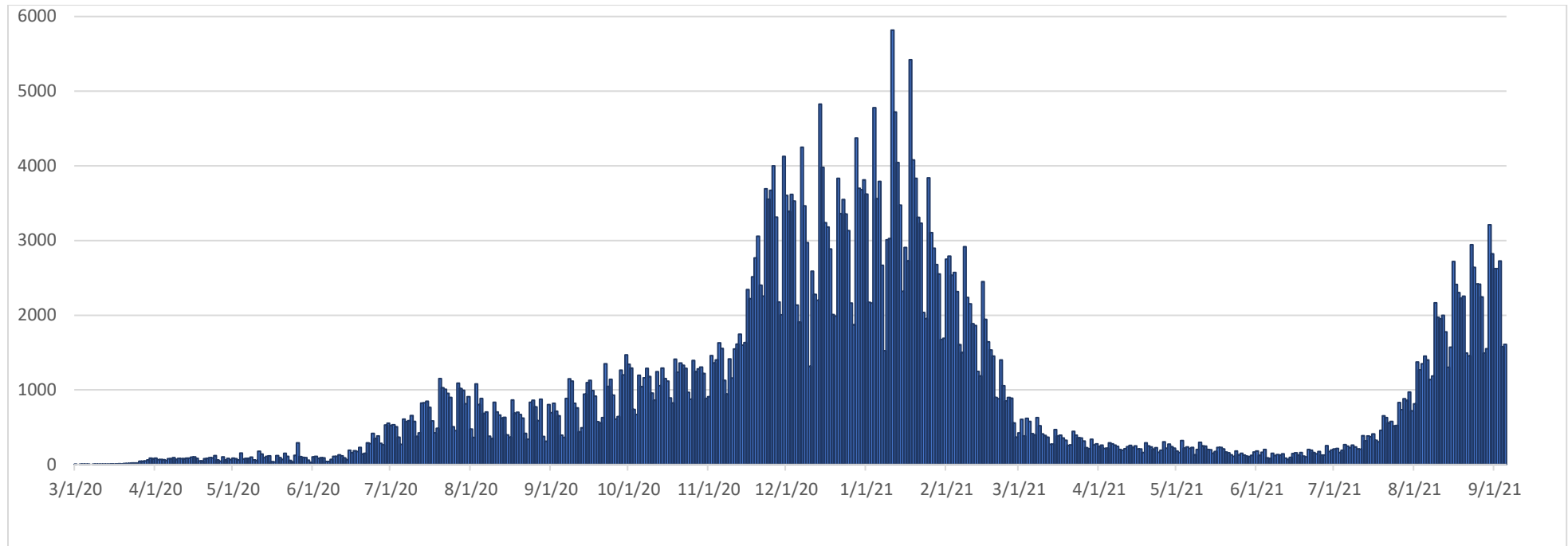
Comorbidities	Number (%)
At least 1 chronic condition <sup>4</sup>	4,275 (52.1%)
Chronic heart or circulatory disease	3,171 (38.6%)
Diabetes	1,991 (24.3%)
Chronic lung failure	1,313 (16.0%)
Chronic renal failure	1,025 (12.5%)
Chronic liver failure	167 (2.0%)

<sup>4</sup>Chronic conditions include chronic heart or circulatory disease, diabetes, chronic lung failure, chronic liver failure and renal failure.



## RECOVERED CASES

### Distribution of recovered cases of COVID-19, March 2020 – September 2021, Oklahoma



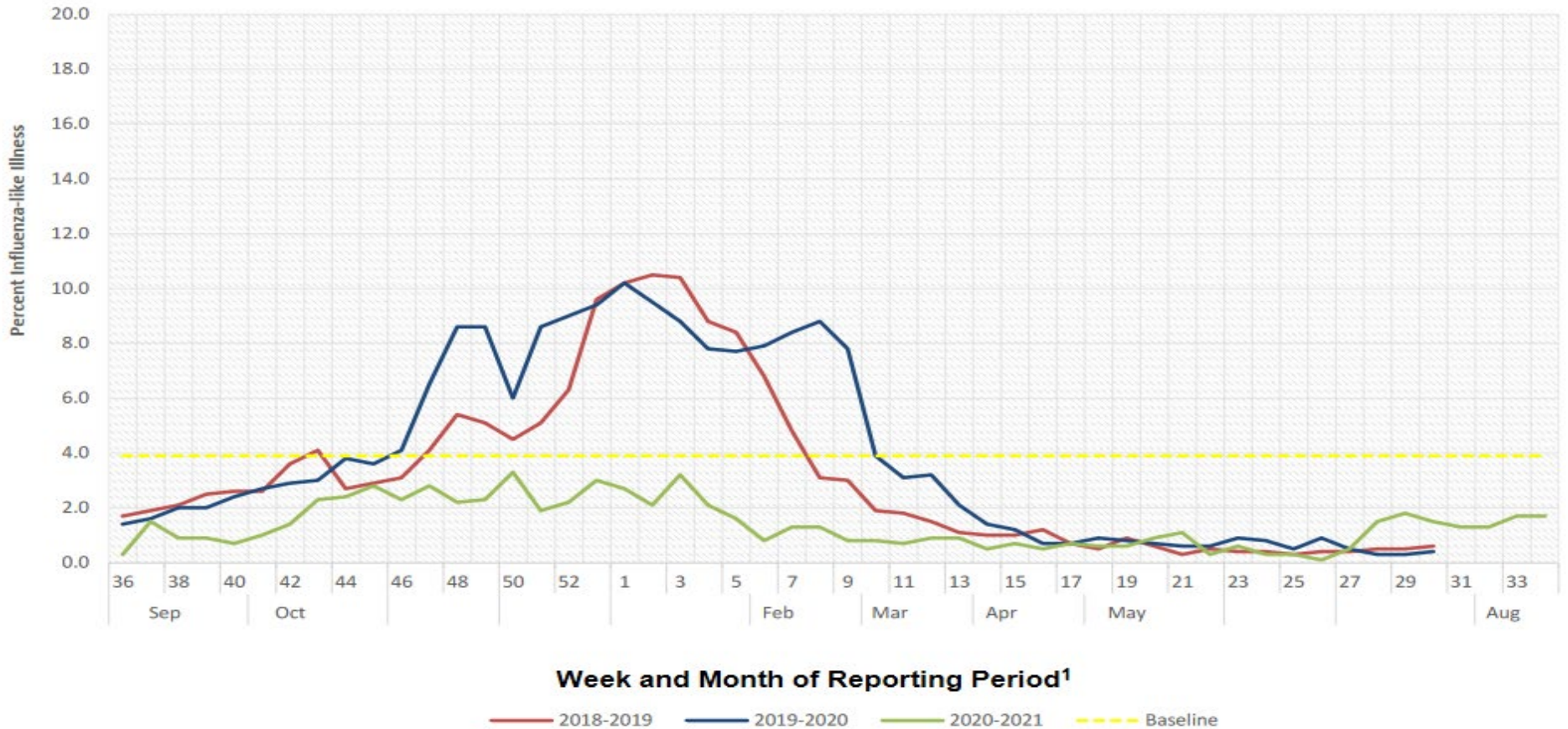
Recovered case: is not deceased and 14 days after symptom onset/specimen collection. Please note that the definition for recovered was changed starting May 4, 2021 due to incomplete data on hospitalizations which may result in an inaccurate estimation of the active cases.



# SYMPTOMS CRITERIA

## WEEKLY PERCENT OF INFLUENZA-LIKE ILLNESS BASED ON TOTAL PATIENT VISITS TO SENTINEL CLINICIANS, OKLAHOMA VIRAL RESPIRATORY ILLNESS SURVEILLANCE SYSTEM, 2018-2021

Week ending August 28, 2021 (Week 34)



<sup>1</sup>These units correspond to the number of weeks in a year and allow for a comparison between multiple seasons.

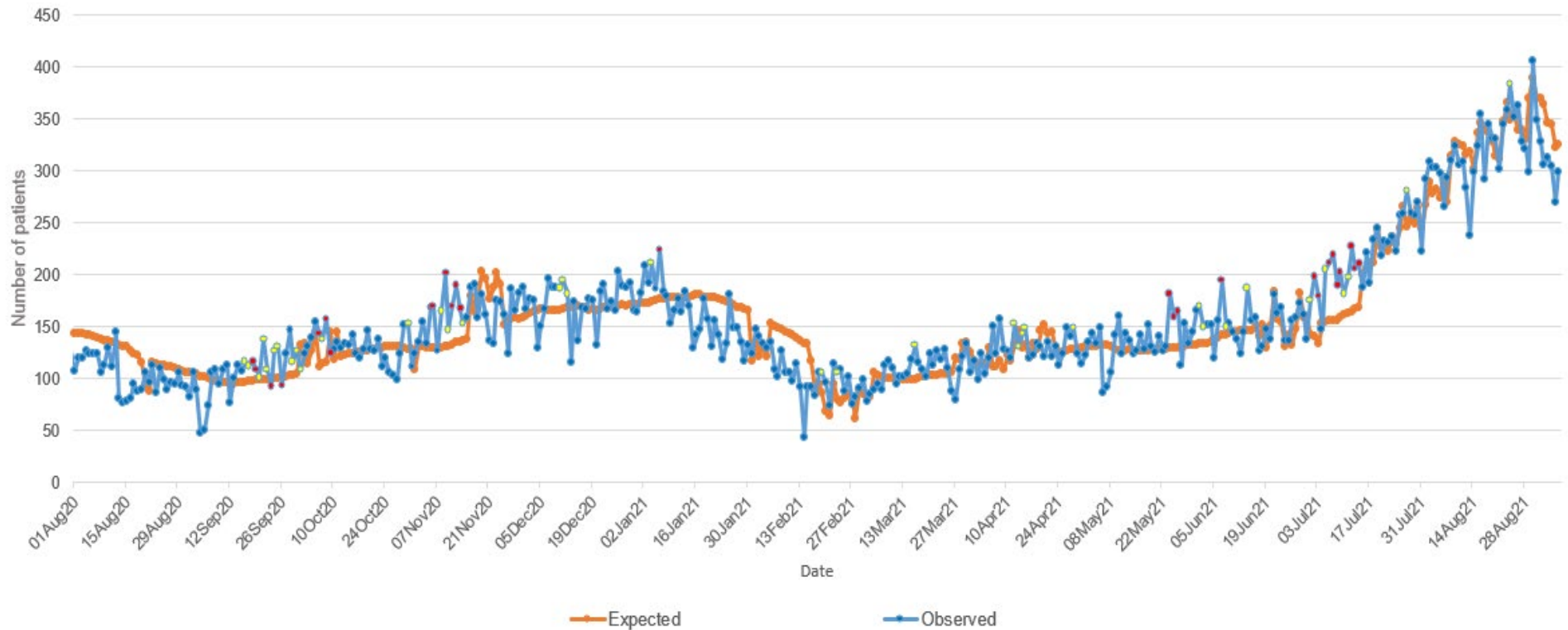
**Interpretation:** Data on Influenza-Like Illness (ILI) increased to 1.5% of outpatient visits exhibiting fever with cough or sore throat. The most current week's value of 1.5% was below Oklahoma's baseline ILI of 3.9%.

**Note:** Data current up to week ending August 28, 2021 (Week 34). ILI graph will be updated monthly between Week 21 through Week 39

**Source:** <https://oklahoma.gov/content/dam/ok/en/health/health2/aem-documents/prevention-and-preparedness/acute-disease-service/disease-information/flu-view>

# COVID-19 RELATED EMERGENCY DEPARTMENT VISITS

Oklahoma State Syndromic Surveillance of  
COVID-19 related ED Visits  
March 01, 2020 – September 06, 2021



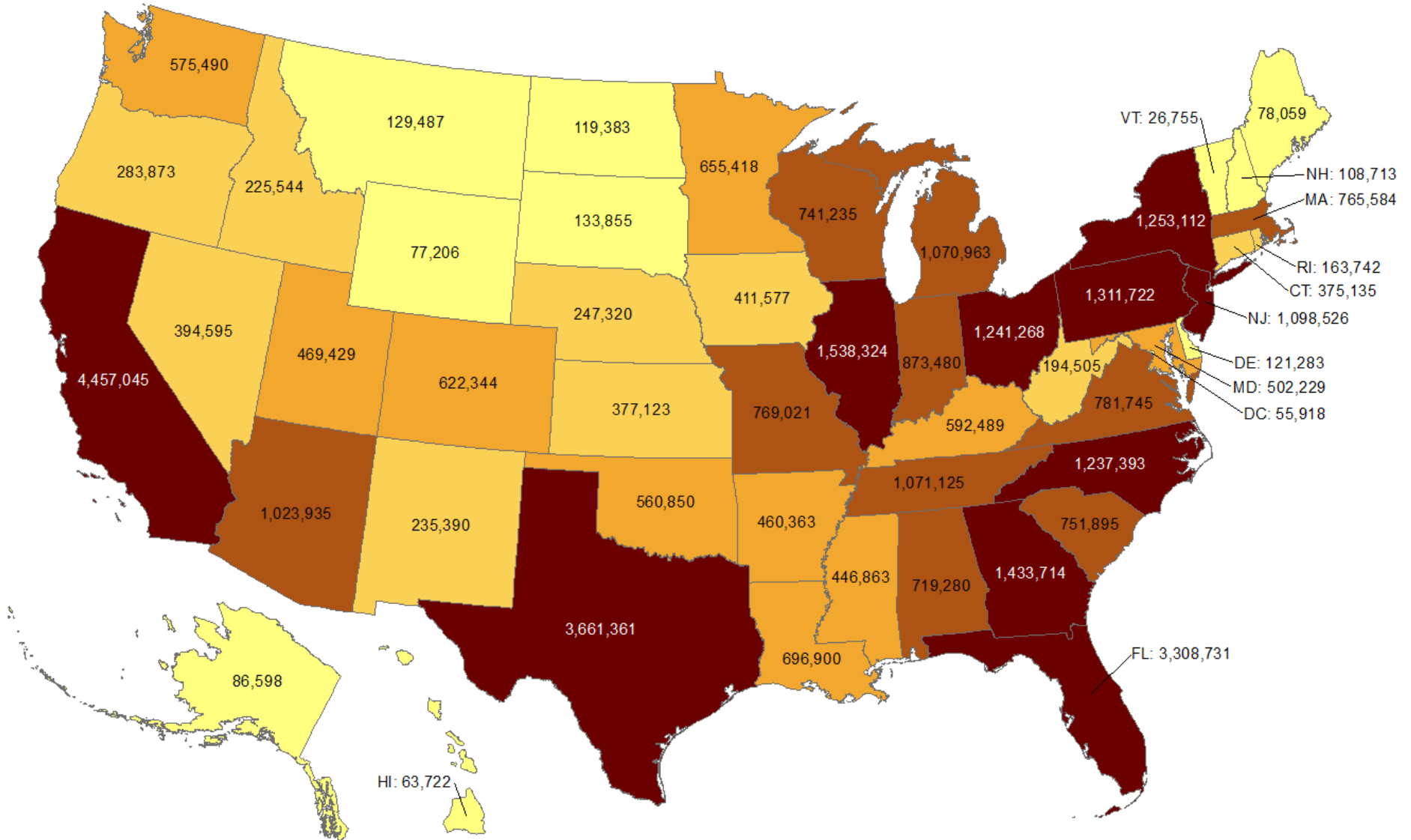
**Interpretation:** Data from syndromic surveillance shows that the number of COVID-19 related emergency department visits were within the expected range for the past 2 weeks as indicated by no red dots on the observed line.

.....

# OKLAHOMA IN COMPARISON

## Total number of reported COVID-19 cases

Oklahoma ranks **26** (out of all States and DC) in the total number of reported COVID-19 cases in the US.



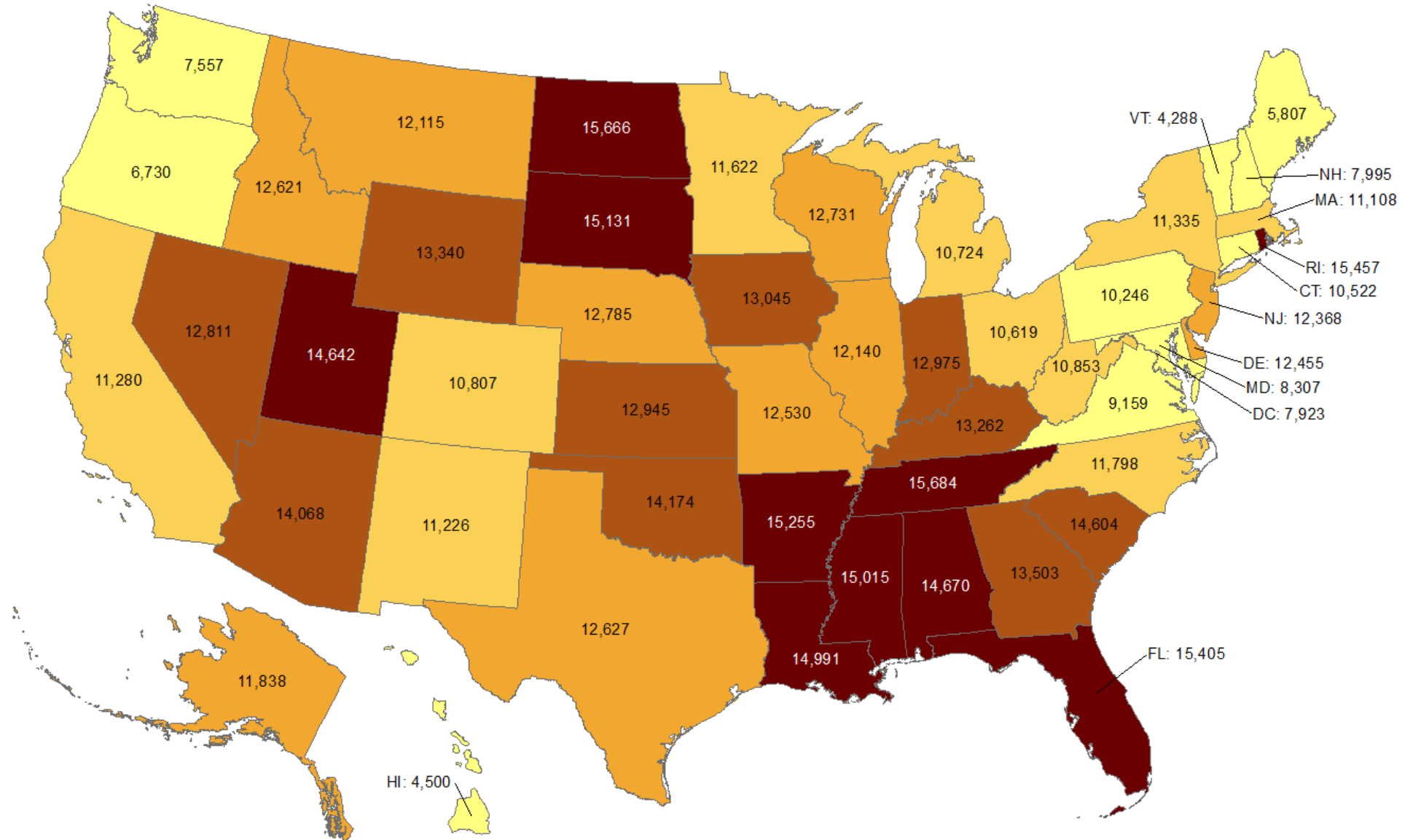
Data from CDC. Available at <https://www.cdc.gov/covid-data-tracker/index.html>

Data as of September 4, 2021

NOTE: CDC numbers include both Confirmed and Probable cases.

## Cumulative incidence of reported COVID-19 cases

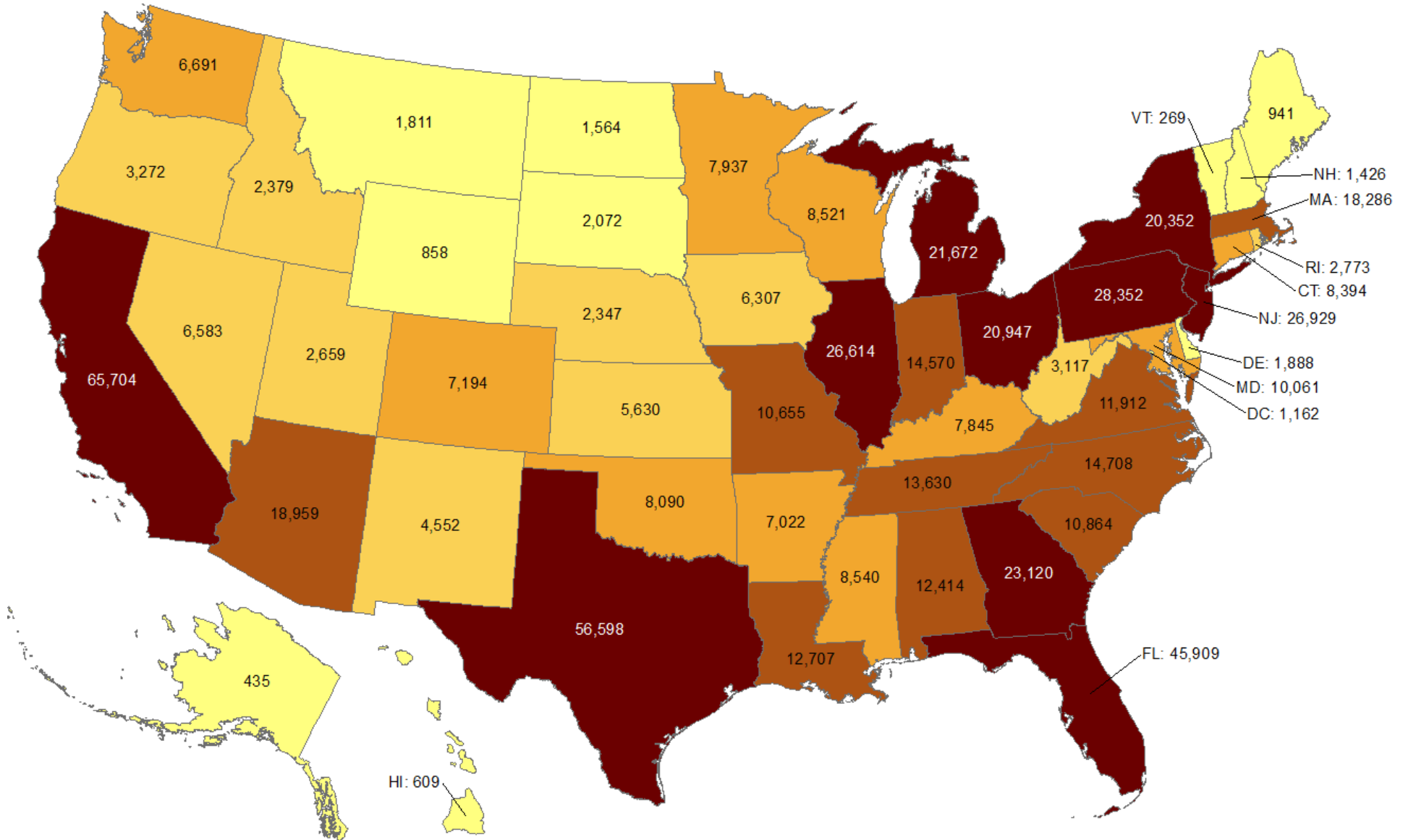
Oklahoma ranks **12** (out of all States and DC) in the cumulative incidence (per 100,000 persons) of reported COVID-19 cases in the US.



Data from CDC. Available at <https://www.cdc.gov/covid-data-tracker/index.html>  
Data as of September 4, 2021

# Total number of reported COVID-19 deaths

Oklahoma ranks **25** (out of all States and DC) in the total number of reported COVID-19 deaths in the US.



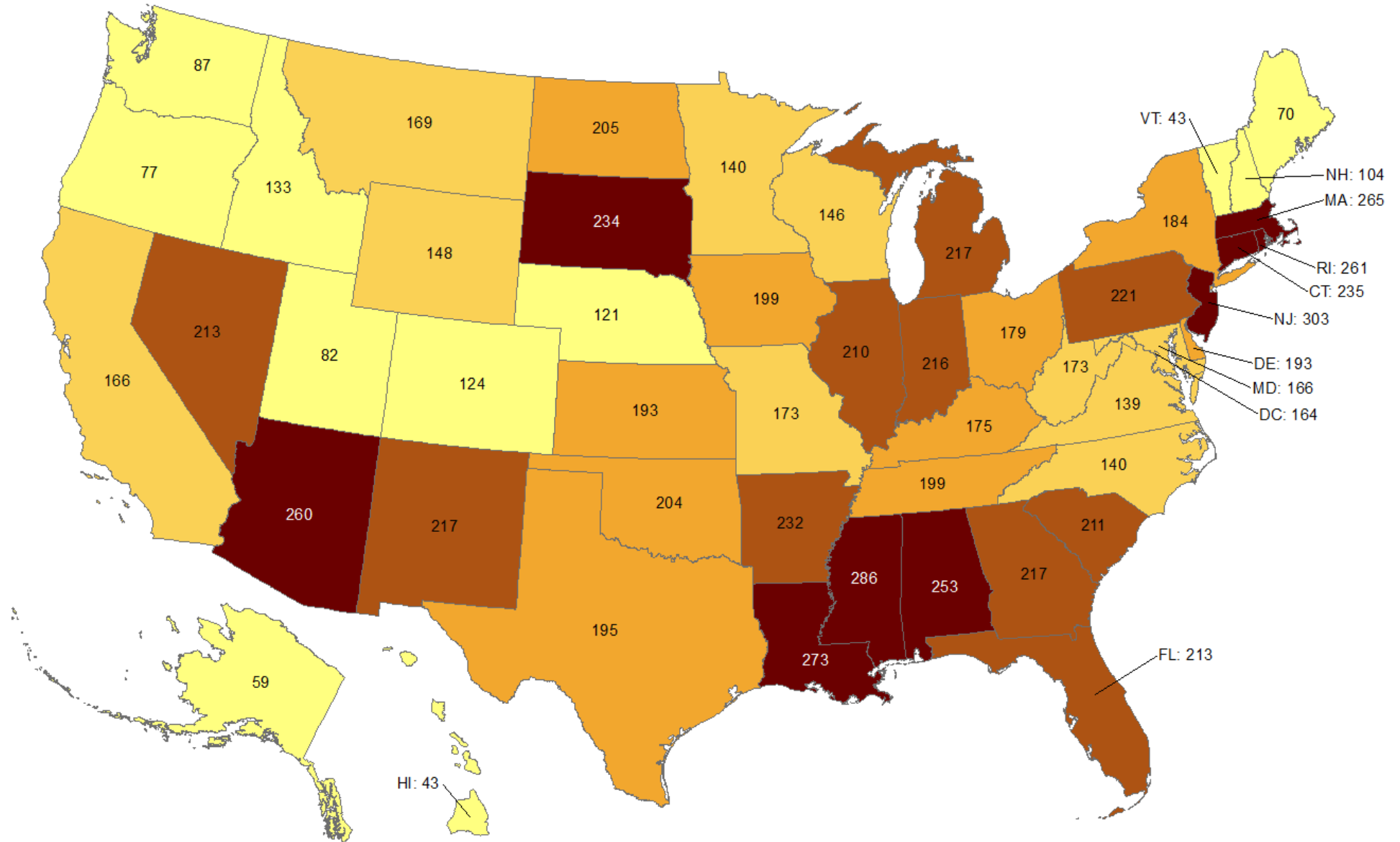
Data from CDC. Available at <https://www.cdc.gov/covid-data-tracker/index.html>

Data as of September 4, 2021

NOTE: CDC numbers include both Confirmed and Probable cases.

## Cumulative death rate of reported COVID-19 cases

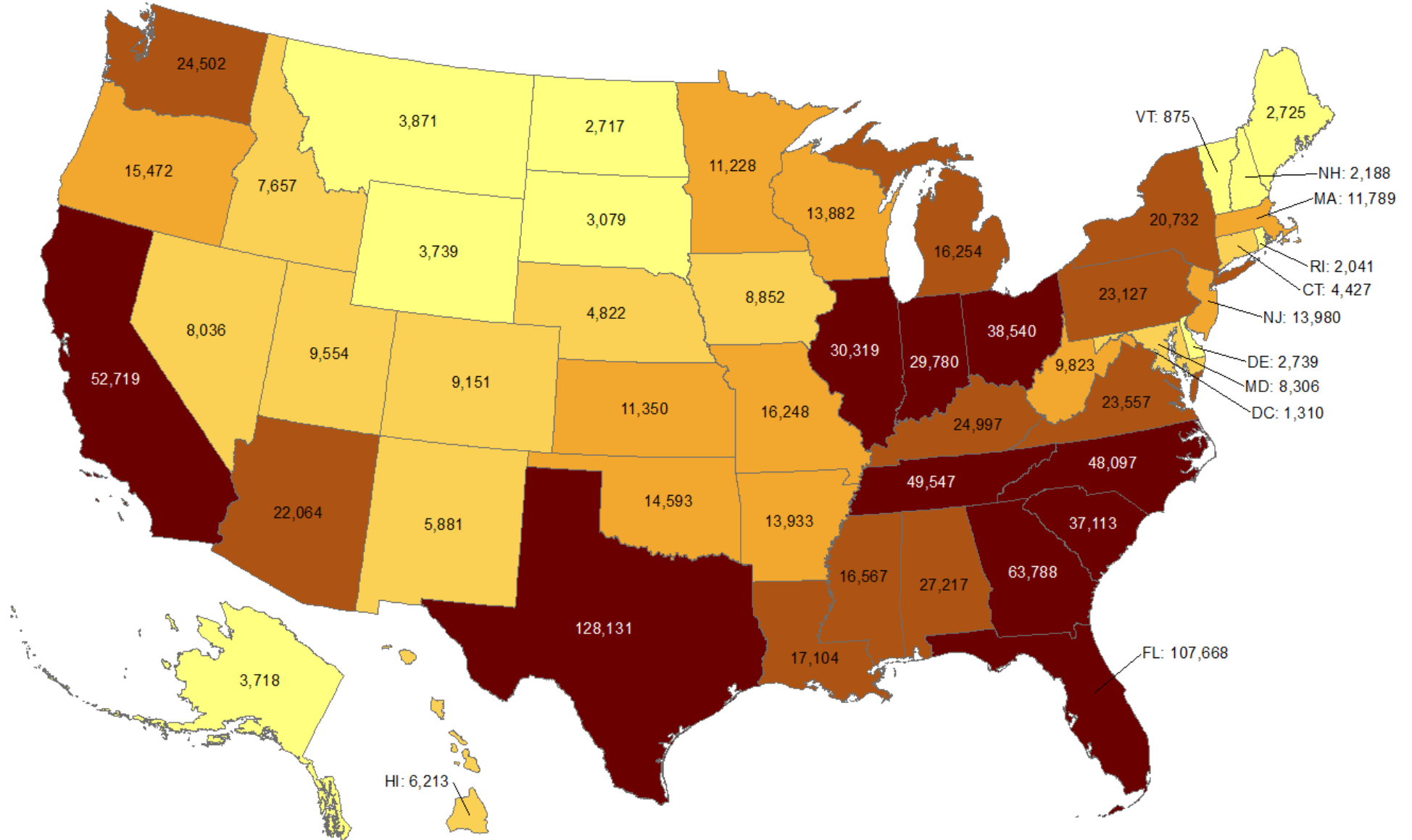
Oklahoma ranks **21** (out of all States and DC) in the cumulative death rate (per 100,000 persons) of reported COVID-19 cases in the US.



Data from CDC. Available at <https://www.cdc.gov/covid-data-tracker/index.html>  
Data as of September 4, 2021

# Total number of reported COVID-19 cases in last 7 days

Oklahoma ranks **23** (out of all States and DC) in the total number of reported COVID-19 cases in the last 7 days.



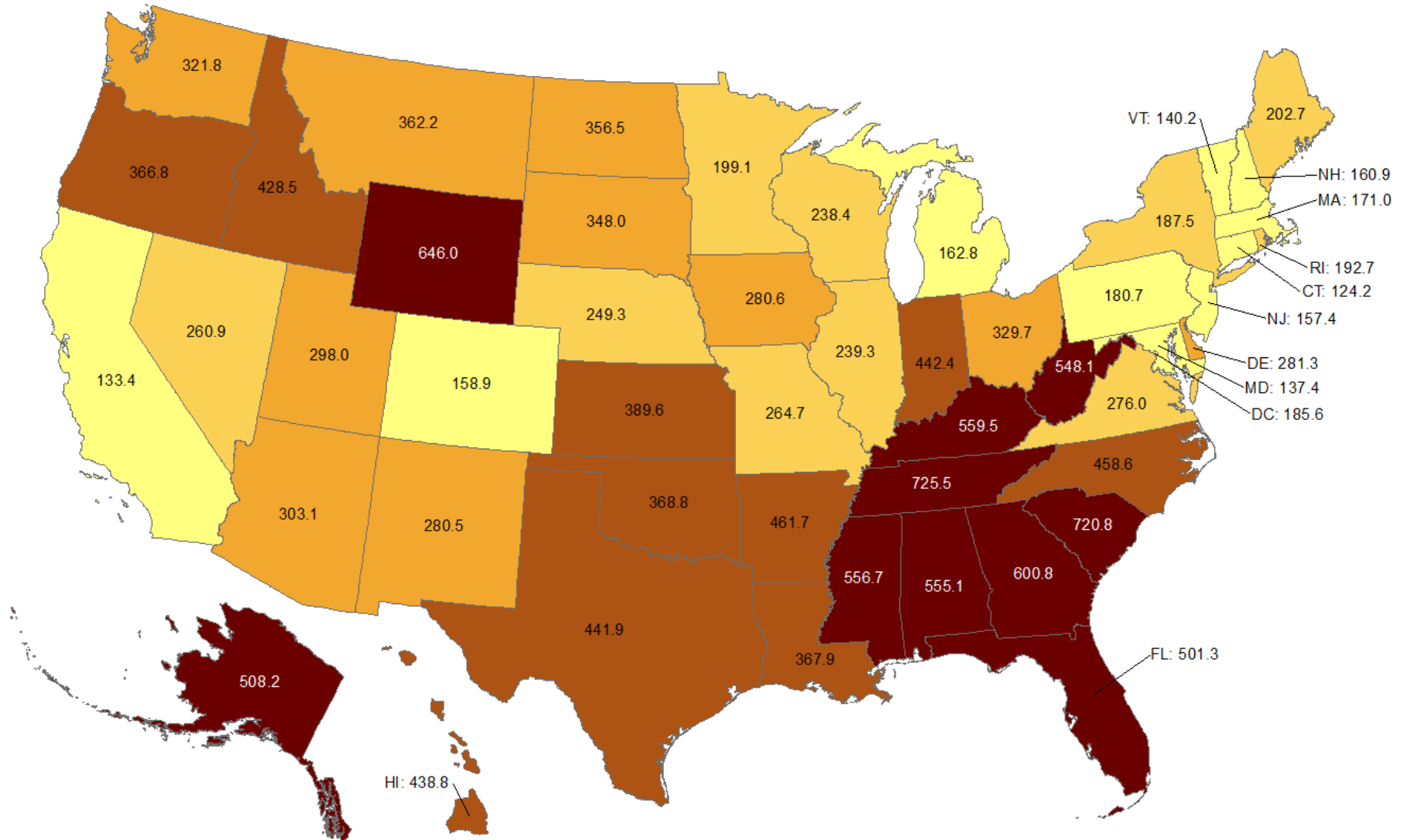
Data from CDC. Available at <https://www.cdc.gov/covid-data-tracker/index.html>

Data as of September 4, 2021

NOTE: CDC numbers include both Confirmed and Probable cases. Total new cases reported August 29, 2021 – September 4, 2021.

## Cumulative incidence of reported COVID-19 cases in last 7 days

Oklahoma ranks **18** (out of all States and DC) in the cumulative incidence (per 100,000 persons) of reported COVID-19 cases in the last 7 days.



Data from CDC. Available at <https://www.cdc.gov/covid-data-tracker/index.html>

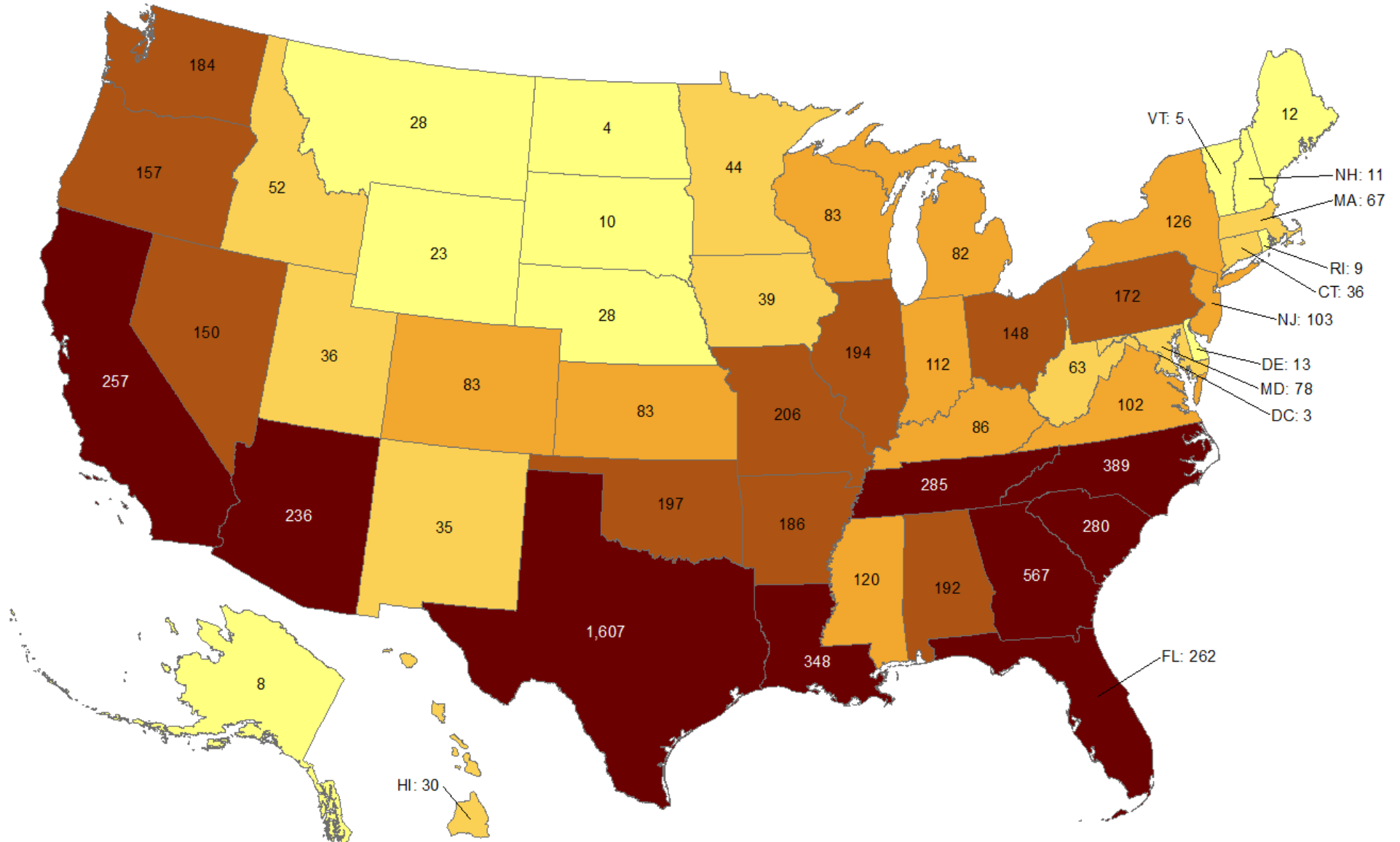
Data as of September 4, 2021

NOTE: Totals per 100,000 people in the last 7 days are calculated as the 7-day moving average of new cases or deaths (September 4, 2021 + 6 preceding days divided by 7) per 100,000 people using the U.S. Census Bureau, 2019.



## Total number of reported COVID-19 deaths in last 7 days

Oklahoma ranks **11** (out of all States and DC) in the total number of reported COVID-19 deaths in the last 7 days.



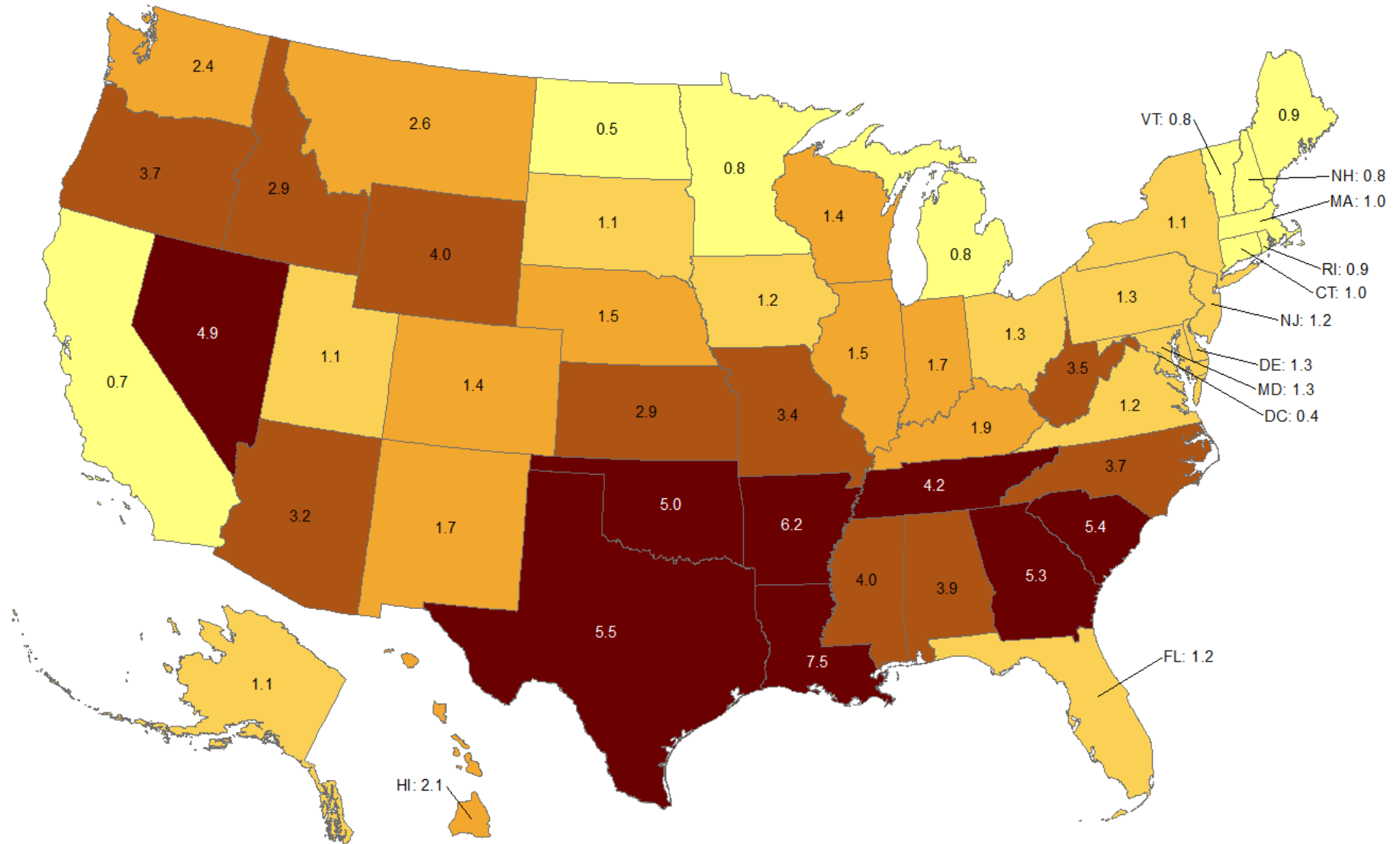
Data from CDC. Available at <https://www.cdc.gov/covid-data-tracker/index.html>

Data as of September 4, 2021

NOTE: CDC numbers include both Confirmed and Probable cases. Total new cases reported August 29, 2021 – September 4, 2021.

## Cumulative death rate of reported COVID-19 cases in last 7 days

Oklahoma ranks **6** (out of all States and DC) in the cumulative death rate (per 100,000 persons) of reported COVID-19 cases in the last 7 days.

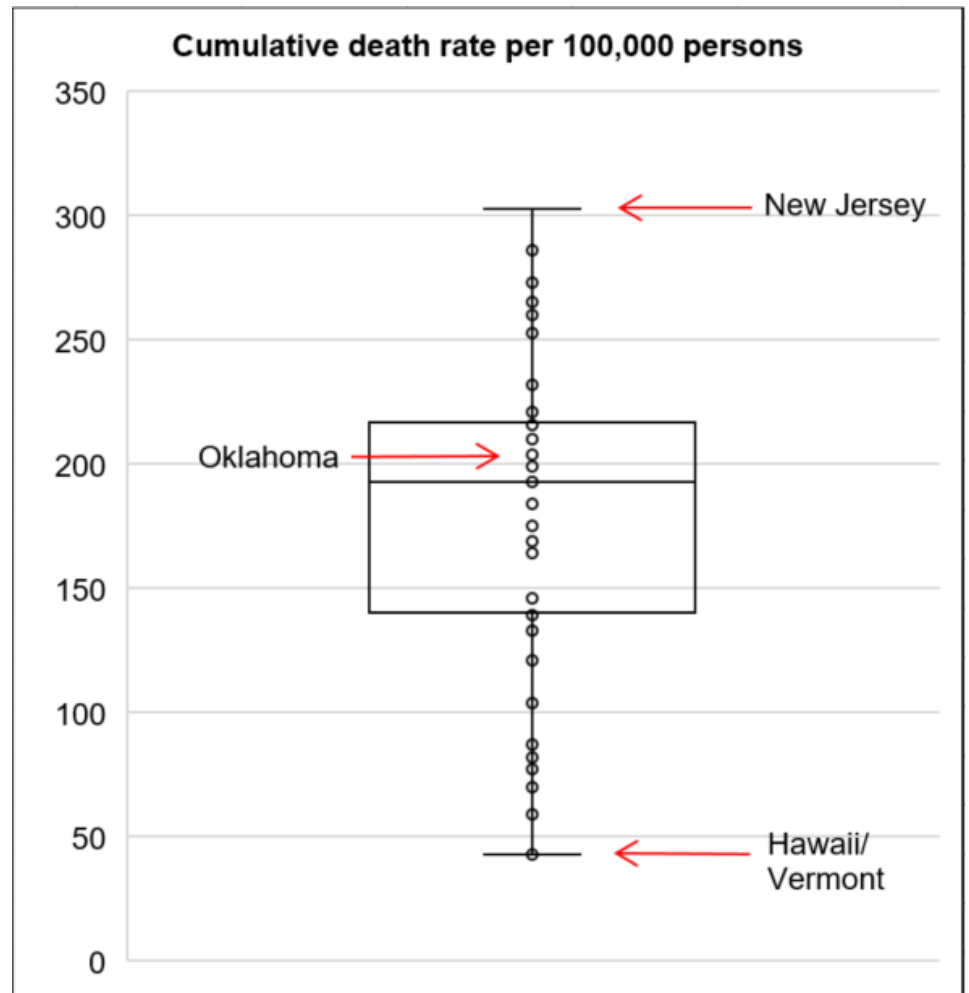
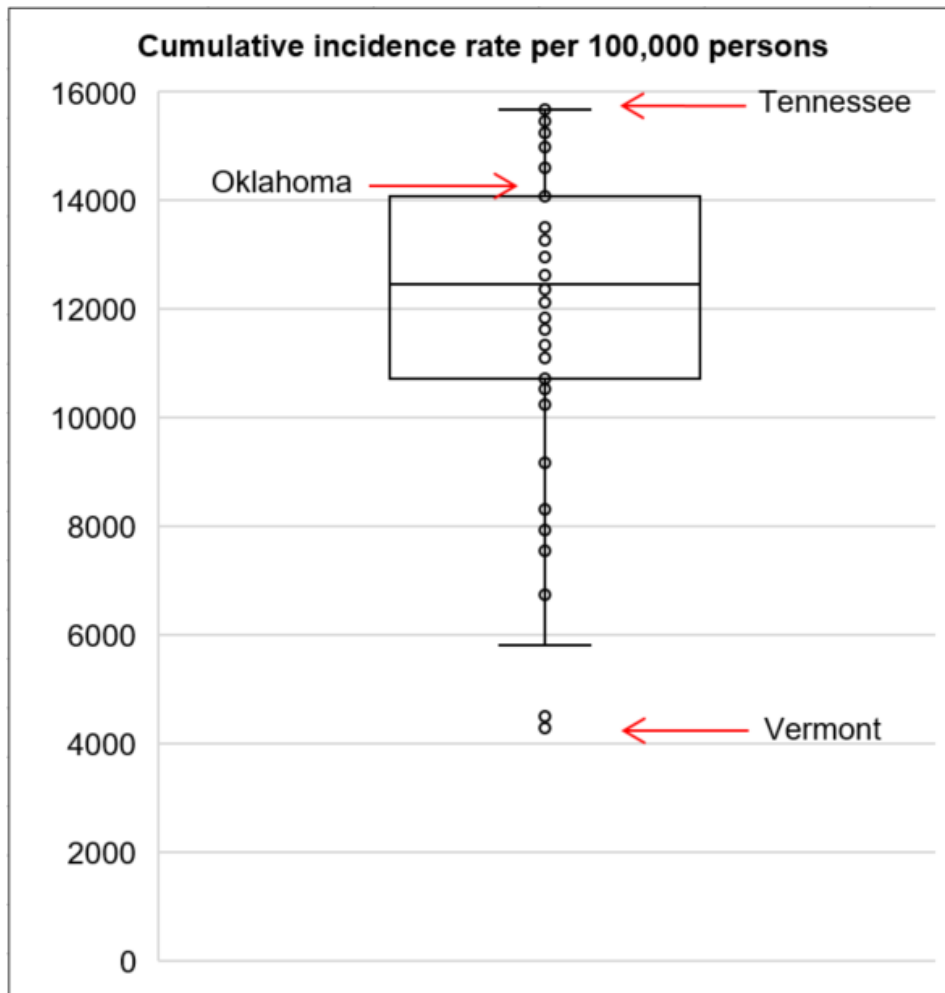


Data from CDC. Available at <https://www.cdc.gov/covid-data-tracker/index.html>

Data as of September 4, 2021

NOTE: Totals per 100,000 people in the last 7 days are calculated as the 7-day moving average of new cases or deaths (September 4, 2021 + 6 preceding days divided by 7) per 100,000 people using the U.S. Census Bureau, 2019.

## Cumulative incidence and cumulative death rate of reported COVID-19 cases



**Interpretation:** Oklahoma has cumulative incidence rate that is **above the 75<sup>th</sup> percentile** of the US and cumulative death rate that is between 50<sup>th</sup> and 75<sup>th</sup> percentile of the US.

Data from CDC. Available at <https://www.cdc.gov/covid-data-tracker/index.html>  
Data as of September 4, 2021

---

## OKLAHOMA EXCESS DEATH ANALYSIS

- + indicates observed count above threshold
- Predicted number of deaths from all causes
- upper bound threshold for excess deaths

### Weekly number of deaths (from all causes)

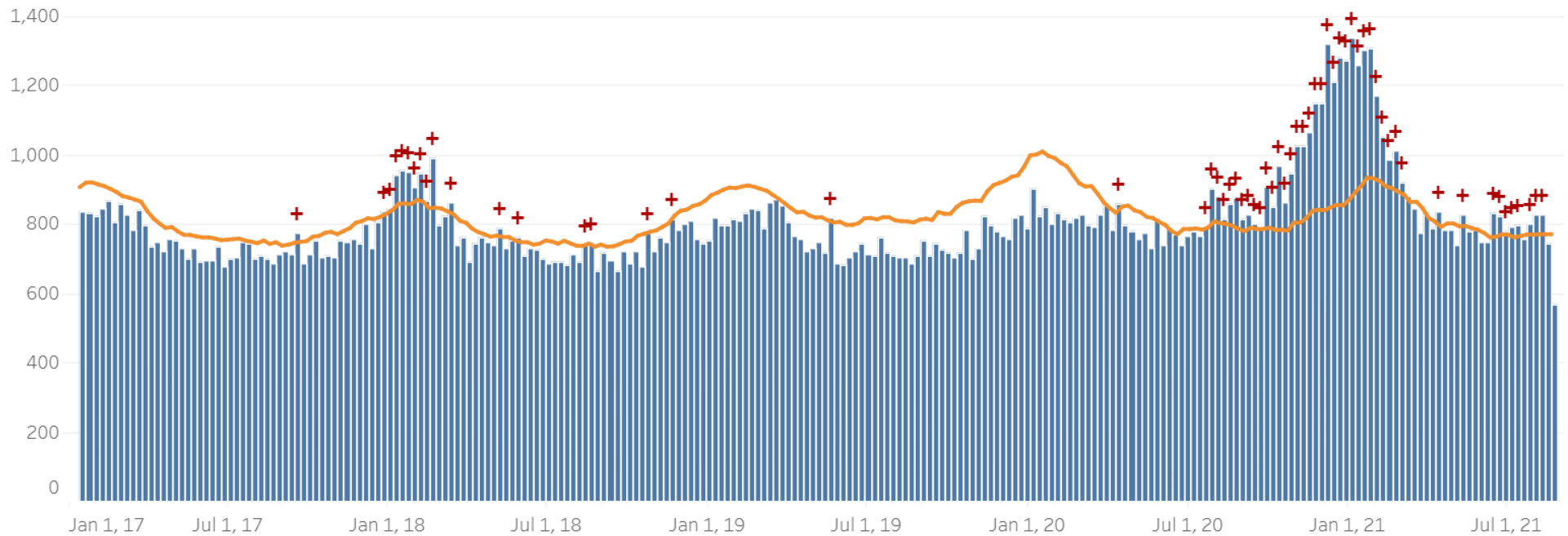


Figure notes: Contains data up to the week-ending date of August 21, 2021. Data in recent weeks are incomplete. Only 60% of the death records are submitted to NCHS within 10 days of the date of death, and completeness varies by jurisdiction.

Source: CDC, National Center for Health Statistics, [https://www.cdc.gov/nchs/nvss/vsrr/covid19/excess\\_deaths.htm#dashboard](https://www.cdc.gov/nchs/nvss/vsrr/covid19/excess_deaths.htm#dashboard), September 7, 2021 11AM

---

## COVID-19 LTC OR NURSING HOME ASSOCIATED CASES BY COUNTY

Status as of 7:00 AM September 7, 2021

Data are preliminary and are subject to change as cases are processed.

County of Residence	Cases	Recovered**	Deaths
Adair	40	32	8
Alfalfa	12	11	0
Atoka	94	88	6
Beaver	22	18	3
Beckham	167	151	16
Blaine	54	51	3
Bryan	192	173	19
Caddo	175	153	22
Canadian	252	231	18
Carter	194	159	35
Cherokee	162	137	25
Choctaw	108	98	9
Cleveland	777	649	123
Coal	72	64	8
Comanche	257	225	30
Cotton	51	42	9
Craig	55	51	3
Creek	255	229	26
Custer	245	197	47

<b>County of Residence</b>	<b>Cases</b>	<b>Recovered**</b>	<b>Deaths</b>
Delaware	259	210	44
Dewey	19	17	1
Ellis	7	7	0
Garfield	307	269	35
Garvin	91	84	7
Grady	227	193	34
Grant	15	13	2
Greer	58	51	7
Harmon	56	55	1
Harper	3	2	1
Haskell	69	64	5
Hughes	37	36	1
Jackson	123	103	20
Jefferson	28	25	3
Johnston	35	29	6
Kay	237	209	26
Kingfisher	124	108	15
Kiowa	47	38	9
Latimer	47	41	6
Le Flore	263	245	17
Lincoln	145	121	24
Logan	170	144	20
Love	31	28	3

County of Residence	Cases	Recovered**	Deaths
Major	83	69	12
Marshall	33	32	1
Mayes	141	131	9
McClain	162	146	16
McCurtain	101	81	20
McIntosh	127	115	12
Murray	80	74	5
Muskogee	429	381	48
Noble	157	153	4
Nowata	82	81	1
Okfuskee	43	42	1
Oklahoma	1,968	1,693	269
Okmulgee	102	99	3
Osage	118	103	14
Ottawa	271	246	24
Pawnee	118	96	20
Payne	157	148	8
Pittsburg	332	294	36
Pontotoc	77	68	8
Pottawatomie	238	213	22
Pushmataha	71	66	5
Roger Mills	3	2	1
Rogers	510	430	80

<b>County of Residence</b>	<b>Cases</b>	<b>Recovered**</b>	<b>Deaths</b>
Seminole	166	156	9
Sequoyah	107	93	14
Stephens	265	244	18
Texas	72	62	10
Tillman	32	30	2
Tulsa	1,606	1,304	292
Wagoner	189	169	19
Washington	364	315	49
Washita	43	41	2
Woods	43	37	5
Woodward	62	55	7
<i>Total</i>	<i>13,934</i>	<i>12,120</i>	<i>1,743</i>

\*\* Recovered case: is not deceased and 14 days after symptom onset/specimen collection. Please note that the definition for recovered was changed starting May 4, 2021 due to incomplete data on hospitalizations which may result in an inaccurate estimation of the active cases.



## COVID-19 LTC OR NURSING HOME ASSOCIATED CASES BY FACILITY

Status as of 7:00 AM September 7, 2021

Data are preliminary and are subject to change as cases are processed.

Facility	Cases	Recovered**	Deaths
Aberdeen Heights Assisted Living Community	15	12	3
Aberdeen Memory Care of Tulsa	6	2	4
Accel at Crystal Park	51	41	10
Ada Care Center	7	7	0
Adams PARC Post Acute Recovery Center	109	90	19
Albert Hall	7	7	0
Alcis Place	1	1	0
Ambassador Manor Nursing Center	37	27	10
Anadarko Nursing & Rehab	43	41	2
Angelwood Assisted Living and Memory Care	1	1	0
Antlers Manor	29	29	0
Arbor House Assisted Living Center - Norman	22	14	8
Arbor House Assisted Living Center of Mustang	37	30	7
Arbor House Assisted Living of Midwest City	4	3	1
Arbor House Reminisce	36	28	8
Arbor Village	12	11	1
Artesian Home	26	22	3
Ash Street Place	6	6	0
Ashbrook Village	5	5	0
Aspen Health and Rehab	15	15	0

Facility	Cases	Recovered**	Deaths
Atoka Manor	82	76	6
Autumn Leaves of Edmond	34	30	4
Autumn Leaves of Southwest Oklahoma City	3	2	1
Autumn Leaves of Tulsa	6	5	1
Avondale Cottage of Pryor	1	1	0
Avonlea Cottage of Seminole	21	20	1
Avonlea Cottage of Shawnee, LLC	10	10	0
Ayers Nursing Home	19	12	7
Ballard Nursing Center	27	22	5
Baptist Village of Hugo	61	57	4
Baptist Village of Oklahoma City	64	59	5
Baptist Village of Owasso	57	46	11
Baptist Village of Owasso AL	26	25	1
Barnsdall Nursing Home	14	13	1
Bartlesville Assisted Living	34	34	0
Bartlesville Health and Rehabilitation Community	108	86	22
Beacon Ridge	13	13	0
Beadles Nursing Home	34	29	5
Beare Manor	32	23	9
Beaver County Nursing Home	22	18	3
Beehive Homes of Broken Arrow	1	1	0
Beehive Homes of Glenpool	2	2	0
Belfair of McAlester	12	9	2

Facility	Cases	Recovered**	Deaths
Belfair of Shawnee	3	3	0
Bell Avenue Nursing Center	44	40	4
Bellarose Senior Living	8	5	3
Bellevue Health and Rehabilitation	106	85	21
Betty Ann Nursing Center	29	27	2
Beverly Place	1	1	0
Billings Fairchild Center, Inc	132	130	2
Binger Nursing and Rehabilitation	63	51	12
Blue Ridge Place	1	1	0
Blue River Healthcare, Inc	26	21	5
Boyce Manor Nursing Home	14	12	1
Bradford Village Healthcare Center: Nursing Home	23	19	4
Brentwood Extended Care & Rehab	24	22	2
Broadway Living Center	6	5	1
Broadway Manor Nursing Home	49	40	8
Broken Arrow Assisted Living	7	5	2
Broken Arrow Nursing Home, Inc.	37	31	6
Broken Bow Nursing Home	57	45	12
Brookdale Ada	5	5	0
Brookdale Bartlesville North	23	19	4
Brookdale Bartlesville South	16	14	2
Brookdale Broken Arrow	13	11	2
Brookdale Cedar Ridge	17	15	2

Facility	Cases	Recovered**	Deaths
Brookdale Chickasha	23	17	6
Brookdale Claremore	7	6	1
Brookdale Durant	27	25	2
Brookdale Edmond Danforth	20	16	4
Brookdale Edmond Santa Fe	6	6	0
Brookdale Enid	4	4	0
Brookdale Muskogee	23	17	6
Brookdale Norman	1	1	0
Brookdale Owasso	2	2	0
Brookdale Shawnee	1	0	1
Brookdale Stillwater	5	4	1
Brookdale Tulsa 71st and Sheridan	67	53	14
Brookdale Tulsa Midtown	11	8	3
Brookdale Tulsa South	8	6	1
Brookdale Village	3	2	1
Brookdale Weatherford	14	12	2
Brookridge Retirement Community	8	8	0
Brookside Nursing Center	7	7	0
Brookwood Skilled Nursing and Therapy	11	8	3
Burford Manor	17	16	1
Calera Manor, LLC	2	2	0
Callaway Nursing Home	14	14	0
Canoe Brook Ardmore	5	5	0

Facility	Cases	Recovered**	Deaths
Capitol Hill Skilled Nursing and Therapy	48	41	7
Carnegie Nursing Home, Inc.	39	33	6
Cedar Creek Nursing Center	80	75	5
Cedar Crest Manor	28	28	0
Cedarcrest Care Center	53	44	9
Center of Family Love	17	17	0
Chandler Therapy & Living Center, LLC	60	51	9
Checotah Nursing Center	8	6	2
Cherokee County Nursing Center	65	56	9
Chickasha Nursing Center, Inc	13	9	4
Chisholm Trail Assisted Living	20	19	1
Choctaw Nation Nursing Home	37	32	5
Cimarron Nursing Center	23	19	4
Cimarron Pointe Care Center	27	23	3
Claremore Skilled Nursing and Therapy	16	13	3
Cleveland Manor Nursing & Rehab	69	58	10
Clinton Therapy & Living Center	6	5	0
Colonial Manor II	59	58	1
Colonial Manor Nursing Home	25	21	4
Colonial Park Manor, LLC	6	6	0
Colonial Terrace Care Center	28	28	0
Community Health Care of Gore	12	12	0
Community Health Center	11	9	2

Facility	Cases	Recovered**	Deaths
Copp's Residential Care, Inc	3	3	0
Cordell Christian	11	11	0
Corn Heritage Village and Rehab	27	26	1
Corn Heritage Village and Rehab of Weatherford	65	54	11
Cottonwood Creek Skilled Nursing & Therapy	35	29	6
Country Club Care	91	86	5
Country Club at Woodland Hills	8	8	0
Country Lane	3	3	0
Country Place	1	1	0
Countryside Estates	17	15	2
Countrywood Assisted Living and Memory Care	12	8	4
Covenant Living at Inverness	30	27	3
Covenant Living of Bixby	6	6	0
Coweta Manor Nursing Home	75	63	12
Creek Place	3	3	0
Creekside Village	14	13	1
Cross Place	1	1	0
Cross Timbers Nursing and Rehabilitation	59	56	3
Crossroads Residential Care	16	14	2
Crystal Place, LLC	1	1	0
Dogwood Creek Retirement Center	8	8	0
Dorset Place - Assisted Living	1	1	0
Dr W F & Mada Dunaway Manor	41	36	5

Facility	Cases	Recovered**	Deaths
Drumright Nursing Home	46	44	2
Duncan Assisted Living	19	18	1
Duncan Community Residence	1	1	0
EastOK Cottage 1	2	0	0
Eastgate Village Retirement Center	103	95	8
Eastwood Manor	95	90	5
Eden Care - The Greens	1	1	0
Edith Kassanavoid Gordon Assisted Living Center	2	2	0
Edmond Healthcare Center	46	37	9
Edna Lee's Residential Care	1	0	0
El Reno Post-Acute Rehabilitation Center	12	10	2
Elk City Nursing Center	59	51	8
Elk Crossing	39	30	7
Elkwood Assisted Living and Memory Care	25	22	3
Elmbrook Home	17	15	2
Elmwood Manor Nursing Home	14	14	0
Emerald Care Center Claremore	124	108	16
Emerald Care Center Midwest	72	65	7
Emerald Care Center Southwest LLC	59	57	2
Emerald Care Center Tulsa	39	32	7
Emerald Square Assisted Living Community	3	3	0
English Village Manor	50	39	11
Enid Senior Care	18	15	2

Facility	Cases	Recovered**	Deaths
Epworth Villa Health Services	31	29	2
Eufaula Manor Nursing and Rehabilitation Center	78	71	7
Fairfax Manor	31	26	5
Fairmont Skilled Nursing and Therapy	78	71	7
Fairview Fellowship Home for Senior Citizens, Inc	92	80	10
Family Care Center of Fairland	2	2	0
Family Care Center of Kingston	20	19	1
Faye's Place	7	7	0
Featherstone Assisted Living Community of Ada	4	4	0
Featherstone Assisted Living Community of Durant	5	5	0
Featherstone Assisted Living Community of Moore	38	32	5
First Shamrock Care Center	5	5	0
Forest Hills Care and Rehabilitation Center	32	26	6
Forrest Manor Nursing Center	52	48	4
Fort Gibson Nursing Home	21	17	4
Fountain View Manor, Inc	10	9	1
FountainBrook Assisted Living and Memory Support	12	10	0
Four Seasons Rehabilitation & Care	42	41	1
Franciscan Villa	128	106	22
Garland Road Nursing and Rehab Center	12	10	2
Gatesway Foundation, Inc	3	3	0
Glade Avenue Assisted Living	5	5	0
Glade Avenue South	6	3	3



Facility	Cases	Recovered**	Deaths
Glenhaven Retirement Village	77	69	8
Glenwood Healthcare	25	16	9
Go Ye Village Continuum of Care Retirement Community	9	4	5
Golden Age Nursing Home of Guthrie, LLC	87	68	19
Golden Oaks Village	42	29	11
Grace Living Center - Buffalo	1	0	1
Grace Living Center - Clinton	19	15	3
Grace Living Center - Jenks	41	32	9
Grace Living Center - Norman	88	71	17
Grace Living Center - Stillwater	16	15	1
Grace Living Center - Tahlequah East Shawnee	4	2	2
Gracewood Health and Rehab	45	37	8
Gran Grans Place	1	1	0
Grand Lake Villa	36	24	9
Grandwood Assisted Living, LC	40	34	6
Green Country Care Center	103	91	12
Green Country Village Assisted Living Center	6	6	0
Green Tree at Sand Springs	30	25	5
Greenbrier Nursing Home	48	45	3
Greenbrier Village Residential Living, LLC	14	14	0
Gregston Nursing Home, Inc.	13	12	1
Grove Nursing Center	96	77	19
Harborchase of Oklahoma City	1	1	0

Facility	Cases	Recovered**	Deaths
Harrah Nursing Center	48	42	6
Haskell Care Center	8	8	0
Haskell County Nursing Center, Inc	67	62	5
Hays House	37	37	0
Heartsworth Center for Nursing and Rehabilitation	49	46	3
Heartsworth House Assisted Living	1	1	0
Heatheridge Residential Care Center	22	16	6
Heavener Nursing & Rehab	55	47	8
Hennessey Nursing & Rehab	79	72	7
Henryetta Community Skilled Healthcare & Rehab	7	6	1
Hensley Nursing & Rehab	36	31	5
Heritage Assisted Living	6	6	0
Heritage Community	32	27	5
Heritage Grove at Tahlequah	3	3	0
Heritage Hills Living & Rehabilitation Center	70	67	3
Heritage Manor	30	29	1
Heritage Park	7	4	3
Heritage Point of Oklahoma City	2	2	0
Heritage Point of Tulsa	7	7	0
Heritage Skilled Nursing & Therapy	7	6	0
Heritage Villa Nursing Center	21	17	4
Heritage Village Nursing Home	14	14	0
Heritage at Brandon Place Health and Rehabilitation	57	51	6

Facility	Cases	Recovered**	Deaths
High Cedar Residential Care	1	1	0
Higher Call Nursing Center	38	31	7
Highland Park Health Care	10	9	1
Hill Nursing Home, Inc	16	15	1
Hillcrest Manor Nursing Center	7	2	5
Hillcrest Nursing Center	21	20	1
Hobart Nursing & Rehab	23	20	3
Holiday Heights Nursing Home	13	11	2
Home of Hope Elmwood House	1	1	0
Home of Hope Scraper House	1	1	0
Homestead Residential Care	2	2	0
Homestead of Bethany, LLC	9	8	1
Homestead of Hugo	44	38	5
Homestead of Owasso	15	15	0
Ignite Medical Resort Norman, LLC	46	37	9
Ignite Medical Resort OKC	109	95	14
Iris Memory Care of Edmond	10	7	3
Jacquelyn House	2	2	0
Jan Frances Care Center	14	12	2
John H. Johnson Care Suites	10	10	0
Kenwood Manor	23	22	1
Kingwood Skilled Nursing and Therapy	29	25	3
Lake Country Nursing Center	30	27	3

Facility	Cases	Recovered**	Deaths
Lake Drive Care and Rehabilitation Center	41	41	0
Lakeland Manor, Inc	14	11	3
Lakeview Nursing & Rehab	21	19	2
Landmark of Midwest City Rehabilitation and Nursing	43	37	6
Lane Nursing & Ventilator Care	2	2	0
Latimer Nursing Home	25	21	4
Legacy Village of Stillwater	16	16	0
Legend at 71st St	16	13	3
Legend at Council Road	7	7	0
Legend at Mingo Road	4	4	0
Legend at Rivendell	61	48	13
Leisure Village Health Care Center	51	39	12
Lexington Nursing Home	15	13	2
Liberty Place	2	2	0
Lindsay Nursing & Rehab	34	31	3
Linwood Village Nursing & Retirement Apts	16	16	0
Lyndale at Edmond	2	2	0
Magnolia Creek Skilled Nursing and Therapy	43	34	9
Mangum Skilled Nursing and Therapy	60	54	6
Maple Lawn Nursing and Rehabilitation	20	16	4
Maplewood Care Center	37	31	4
Marlow Nursing & Rehab	16	15	1
McAlester Nursing & Rehab	51	47	4

Facility	Cases	Recovered**	Deaths
McCall's Chapel School, Inc #11	2	2	0
McCall's Chapel School, Inc #13	1	1	0
McCall's Chapel School, Inc #4	1	1	0
McCall's Chapel School, Inc #7	1	1	0
McCall's Chapel School, Inc #8	1	1	0
McCall's Chapel School, Inc #9	1	1	0
McLoud Nursing Center	6	5	0
McMahon-Tomlinson Nursing Center	46	41	4
Meadow Brook Residential Care	29	29	0
Meadowbrook Nursing Center	42	39	3
Meadowlake Estates	84	67	17
Meadowlakes Retirement Village	1	1	0
Medical Park West Rehabilitation	9	7	2
Medicallodges Dewey	6	6	0
Meeker Nursing Center	51	36	15
Memorial Heights Nursing Center	27	20	7
Memorial Nursing Center	27	26	1
Memory Care Center at Emerald	13	12	1
Meridian Nursing Home	16	15	1
Miami Nursing Center, LLC	87	80	7
Mid-Del Skilled Nursing and Therapy	25	24	1
Miller's Residential Care, LLC	2	2	0
Mitchell Manor	84	79	5

Facility	Cases	Recovered**	Deaths
Monroe Manor	17	13	4
Montereaue, Inc Assisted Living	24	19	5
Montereaue, Inc LTC/SNF	9	8	0
Montevista Rehabilitation and Skilled Care	22	18	3
Mooreland Heritage Manor	25	23	2
Muscogee (Creek) Nation Skilled Nursing Facility	1	1	0
Muskogee Nursing Center	20	19	1
New Hope Retirement & Care Center	4	3	0
Noble Health Care Center	81	76	5
North County Assisted Living	6	5	1
North County Center for Nursing and Rehabilitation	36	32	4
North Winds Living Center	2	2	0
Northhaven Place	10	9	1
Northwest Nursing Center	3	3	0
Nowata Nursing Center	5	4	1
Oak Hills Living Center	20	19	1
Oakridge Home	13	11	2
Oakridge Nursing Center	60	53	7
Okemah Care Center	27	25	2
Oklahoma Methodist Manor AL	5	4	1
Oklahoma Methodist Manor NH	36	33	3
Oklahoma Veterans Center, Ardmore Division	35	22	13
Oklahoma Veterans Center, Claremore Division	314	267	47

Facility	Cases	Recovered**	Deaths
Oklahoma Veterans Center, Clinton Division	155	122	33
Oklahoma Veterans Center, Lawton-Ft. Sill Division	44	37	7
Oklahoma Veterans Center, Norman Division	95	65	27
Oklahoma Veterans Center, Sulfur Division	50	49	1
Oklahoma Veterans Center, Talihina Division	33	29	4
Okmulgee Terrace	2	2	0
Osage Nursing Home, LLC	30	29	1
Oxford Glen at Owasso	25	20	5
Parkhill North Nursing Home	23	19	2
Parkland Manor	1	1	0
Parkview Pointe Senior Living	1	1	0
Pauls Valley Care Center	1	1	0
Perry Green Valley Nursing Center, LLC	29	27	2
Pleasant Valley Health Care Center	80	76	4
Pocola Health & Rehab	60	56	4
Ponca City Nursing and Rehabilitation	69	60	8
Prairie House Assisted Living & Memory Care	8	5	3
Prairie Pointe at Stroud	11	11	0
Primrose Retirement Community of Shawnee	12	12	0
Primrose Retirement Community of Stillwater	3	3	0
Providence House	8	8	0
Providence Place	1	1	0
Purcell Care Center, LLC	42	35	7

Facility	Cases	Recovered**	Deaths
Quail Creek Senior Living	23	19	4
Quail Ridge Living Center, Inc (Colcord, OK)	37	35	2
Quail Ridge Senior Living	27	21	6
Quinton Manor Nursing Home	10	10	0
RT 66 Residential Care Home, LLC	7	7	0
Rainbow Health Care Community: Nursing Home	84	75	9
Rambling Oaks (Norman)	29	26	3
Rambling Oaks Courtyard Assisted Living & Memory Care	9	9	0
Ranch Terrace Nursing Home	22	19	3
Ranchwood Nursing Center	37	34	2
Reliant Living Center	19	18	1
Reliant Living Center of Del City	3	3	0
River Oaks Skilled Nursing	50	44	6
Riverside Health Services LLC	18	18	0
Robert M Greer Center	1	1	0
Rolling Hills Care Center	27	16	11
Ruth Wilson Hurley Manor	74	66	8
Saint Simeons Episcopal Home	31	28	3
Sand Plum Assisted Living Community	12	11	1
Sand Springs Nursing and Rehabilitation	10	10	0
Seiling Nursing Center	7	5	2
Seminole Care and Rehabilitation Center	89	83	6
Seminole Pioneer Nursing Home	21	21	0



Facility	Cases	Recovered**	Deaths
Seminole Place	2	2	0
Senior Star The Brook	3	3	0
Senior Suites Healthcare	17	14	3
Senior Village	12	10	2
Sequoyah East Nursing Center, LLC	17	16	1
Sequoyah Manor	55	44	11
Sequoyah Pointe Living Center	26	22	4
Shady Rest Care Center	34	31	3
Shanoan Springs Nursing and Rehabilitation	62	55	7
Share Medical Center	7	6	0
Shattuck Nursing Center	5	5	0
Shawn Manor Nursing Home	2	2	0
Shawnee Care Center	38	31	7
Shawnee Colonial Estates Nursing Home	73	63	10
Sherwood Manor Nursing Home	18	12	5
Shiloh Manor	14	14	0
Sienna Extended Care & Rehab	40	37	3
Skiatook Nursing Home	47	40	6
Skyview Nursing Center	9	6	1
Sommerset Neighborhood	23	22	1
South Park East	46	42	4
South Pointe Rehabilitation and Care Center	194	166	28
Southbrook Healthcare, Inc.	36	30	6

Facility	Cases	Recovered**	Deaths
Southern Hills Rehabilitation Center	87	74	12
Southern Oaks Care Center	55	44	11
Southern Plaza Assisted Living and Memory Care	30	28	2
Southern Pointe Living Center	49	41	8
Southridge Place	1	1	0
Spanish Cove Housing Authority	19	18	0
Spiro Nursing Home, Inc.	53	51	1
St. Ann's Skilled Nursing and Therapy	87	59	28
St. Katharine Drexel Retirement Center	10	10	0
Stilwell Nursing Home, LLC	33	25	8
Stonecreek Assisted Living and Memory Care	6	4	2
Storey Oaks	48	43	5
Stroud Health Care Center South	8	8	0
Summers Healthcare, LLC	30	29	1
Sunset Estates of Purcell	85	79	6
Tamarack Retirement Center	18	16	2
Teal Creek Assisted Living & Memory Care	6	6	0
Tealridge Assisted Living	12	12	0
Temple Manor Nursing Home	44	37	7
Ten Oaks Place	12	8	4
The Arbors Assisted Living Center	8	8	0
The Brentwood Senior Living	22	20	2
The Chateau	10	8	2

Facility	Cases	Recovered**	Deaths
The Commons	111	99	10
The Commons - AL	3	3	0
The Cottage Extended Care	31	22	8
The Courtyards at Claremore Assisted Living	7	5	2
The Courtyards at Magnolia Creek	9	9	0
The Fountains at Canterbury Health Center	37	31	6
The Gardens	20	16	4
The Gardens at Rivermont	3	3	0
The Golden Rule Home	58	55	3
The Grand at Bethany Skilled Nursing and Therapy	8	8	0
The Health Center at Concordia	31	28	3
The Health Center at Concordia ALC	8	8	0
The Heaven House Elmwood	1	1	0
The Highlands at Owasso	38	28	10
The King's Daughters & Sons Nursing Home	23	22	1
The Lakes	12	11	1
The Legend at Jefferson's Garden	2	2	0
The Linden at Stonehaven Square	17	9	8
The Living Centre	35	28	7
The Lodge at Brookline	15	13	2
The Mansion at Waterford	21	17	4
The Neighborhoods at Baptist Village of Ada	6	5	0
The Neighborhoods at Baptist Village of Elk City	10	10	0

Facility	Cases	Recovered**	Deaths
The Neighborhoods at Baptist Village of Okmulgee	1	1	0
The Nova Center	1	1	0
The Oaks Healthcare Center	32	30	2
The Parke Assisted Living	17	15	2
The Regency Skilled Nursing and Therapy	25	22	2
The Renaissance of Stillwater - Assisted Living	5	4	0
The Springs Skilled Nursing and Therapy	49	39	9
The Timbers Skilled Nursing and Therapy	68	56	11
The Veraden	9	9	0
The Villages at Southern Hills	86	66	20
The Willows	1	1	0
The Wilshire Skilled Nursing and Therapy	5	5	0
The Wolfe Living Center at Summit Ridge	17	16	1
Tidwell Living Center	1	1	0
Timberwood Assisted Living & Memory Care	1	1	0
Touchmark at Coffee Creek	26	25	1
Town Village Assisted Living	2	2	0
Town of Vici Nursing Home	18	17	1
Tulsa Assisted Living and Memory Care	4	4	0
Tulsa Nursing Center	33	29	3
Tuscany Village Nursing Center	26	24	2
Tuttle Care Center	30	28	2
University Park Skilled Nursing & Therapy	65	59	6

Facility	Cases	Recovered**	Deaths
University Village	78	62	13
Van Buren House Assisted Living	2	2	0
Via Christi Village Ponca City	104	98	5
Vian Nursing & Rehab, LLC	22	20	2
Victorian Estates	8	7	1
Village Health Care Center	13	12	1
Village Lodge of Ardmere Village	11	10	1
Village at Oakwood	8	7	1
Village on the Park	40	32	8
Villagio of Oklahoma City	1	0	1
Wagoner Health & Rehab	44	41	3
Wagoner Health & Rehab Res Care	11	11	0
Walnut Grove Living Center	70	57	13
Warr Acres Nursing Center	20	19	1
Washita Valley Living Center	35	32	3
Weatherwood Assisted Living and Memory Care	10	10	0
Wellington Parke, LLC	4	4	0
West Wind Assisted Living	25	23	1
Westbrook Gardens	6	5	1
Westbrook Healthcare, Inc	19	17	2
Westhaven Nursing Home	81	78	3
Westview Cottages	35	35	0
Wewoka Healthcare Center	13	13	0

Facility	Cases	Recovered**	Deaths
Whispering Oaks	3	3	0
Wildewood Skilled Nursing and Therapy	6	5	1
Wildwood Care Center, Inc	37	34	3
Wilkins Health and Rehabilitation Community	23	23	0
Willow Creek Health Care	10	4	0
Willow Haven Nursing Home	33	27	6
Willow Park Health Care Center	71	61	10
Willow Place	5	5	0
Willowood at Mustang Assisted Living and Memory Care	7	7	0
Wilson Nursing Center	48	40	8
Windridge Nursing and Rehabilitation Center	31	27	4
Windsor Hills Nursing Center	7	6	1
Woodland Park Home, Inc	6	5	1
Woodlands Skilled Nursing & Therapy	3	3	0
Woodview Home, Inc.	21	21	0
Woodward Skilled Nursing and Therapy	33	29	4
York Manor Nursing Home	43	41	2
Zarrow Pointe	20	17	3
<i>Total</i>	<i>13,934</i>	<i>12,120</i>	<i>1,743</i>

\*\* Recovered case: is not deceased and 14 days after symptom onset/specimen collection. Please note that the definition for recovered was changed starting May 4, 2021 due to incomplete data on hospitalizations which may result in an inaccurate estimation of the active cases.

## **ACKNOWLEDGEMENT**

The weekly report is made by possible through the efforts of county and city public health and healthcare professionals.

---

## **NOTES**

Every effort is made to ensure accuracy and the data is up-to-date for the time period reported.

For daily updates on COVID-19, please visit <https://coronavirus.health.ok.gov/>

---

## **DISCLAIMER**

The purpose of publishing aggregated statistical COVID-19 data through the OSDH Dashboard, the Executive Order Report, and the Weekly Epidemiology and Surveillance Report is to support the needs of the general public in receiving important and necessary information regarding the state of the health and safety of the citizens of Oklahoma. These resources may be used only for statistical purposes and may not be used in any way that would determine the identity of any reported cases.