

OKLAHOMA COVID-19 WEEKLY REPORT

Weekly Epidemiology and Surveillance Report
 October 2 – October 8, 2020



PURPOSE To provide up-to-date weekly epidemiological data on COVID-19 in Oklahoma.

SNAPSHOT

	Oct 2-8	Change ¹	Total
Cases	7,195	1.0%	95,564
Recovered cases ²	6,806	1.9%	81,289
Deaths	50	-7.4%	1,085

1. Change from the week of Sept 25-Oct 1, 2020.

2. Currently not hospitalized or deceased and 14 days after onset/report.

Cases		Deaths	
Persons aged 50 and over	Females	Persons aged 50 and over	Males
32%	52%	96%	56%
of <u>cases</u>	of <u>cases</u>	of <u>deaths</u>	of <u>deaths</u>

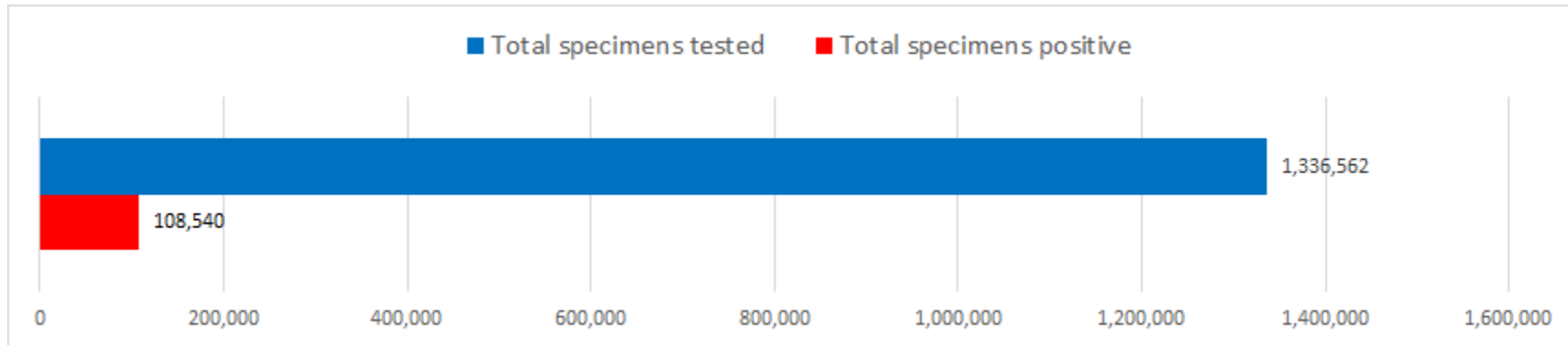
The average age of cases was **39** years.

The youngest case was **less than a year old** and the oldest case was **100+ years**.

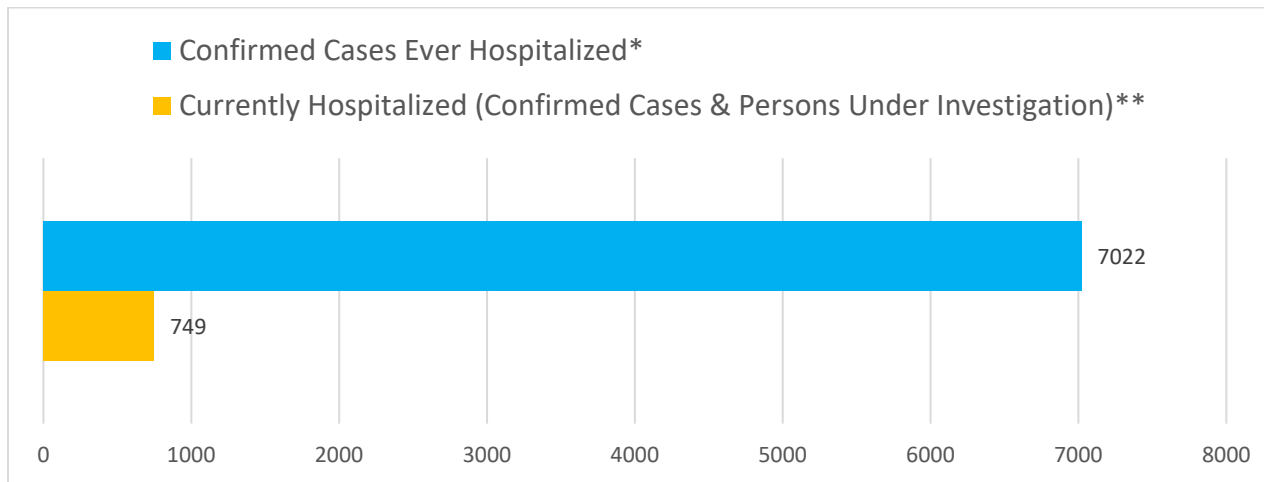
The average age of individuals who died was **75** years.

The youngest individual to die from COVID-19 was **less than 15 years** and the oldest was **100+ years**.

Testing (reported through October 8)



Hospitalizations



*Ever hospitalized includes discharged, deceased, currently hospitalized and recovered as of 10/8/2020.

**Source OSDH Beds Survey. Note, facility response rate of 95% on 10/8/2020.

KEY POINTS

- **7,195** confirmed cases were reported in the past week
1.0% increase from the week before (Sept 25-Oct 1).
 - **50** deaths were reported in the past week
7.4% decrease from the week before (Sept 25-Oct 1).
 - **7,022 (7.3%)** confirmed cases have been hospitalized
 - **512** confirmed cases were reported to OSDH as hospitalized in the past week
34.7% increase from the week before (Sept 25-Oct 1)
 - **1,336,562** specimens have been tested in total
 - **77** counties (out of 77) have had at least one confirmed case of COVID-19
-

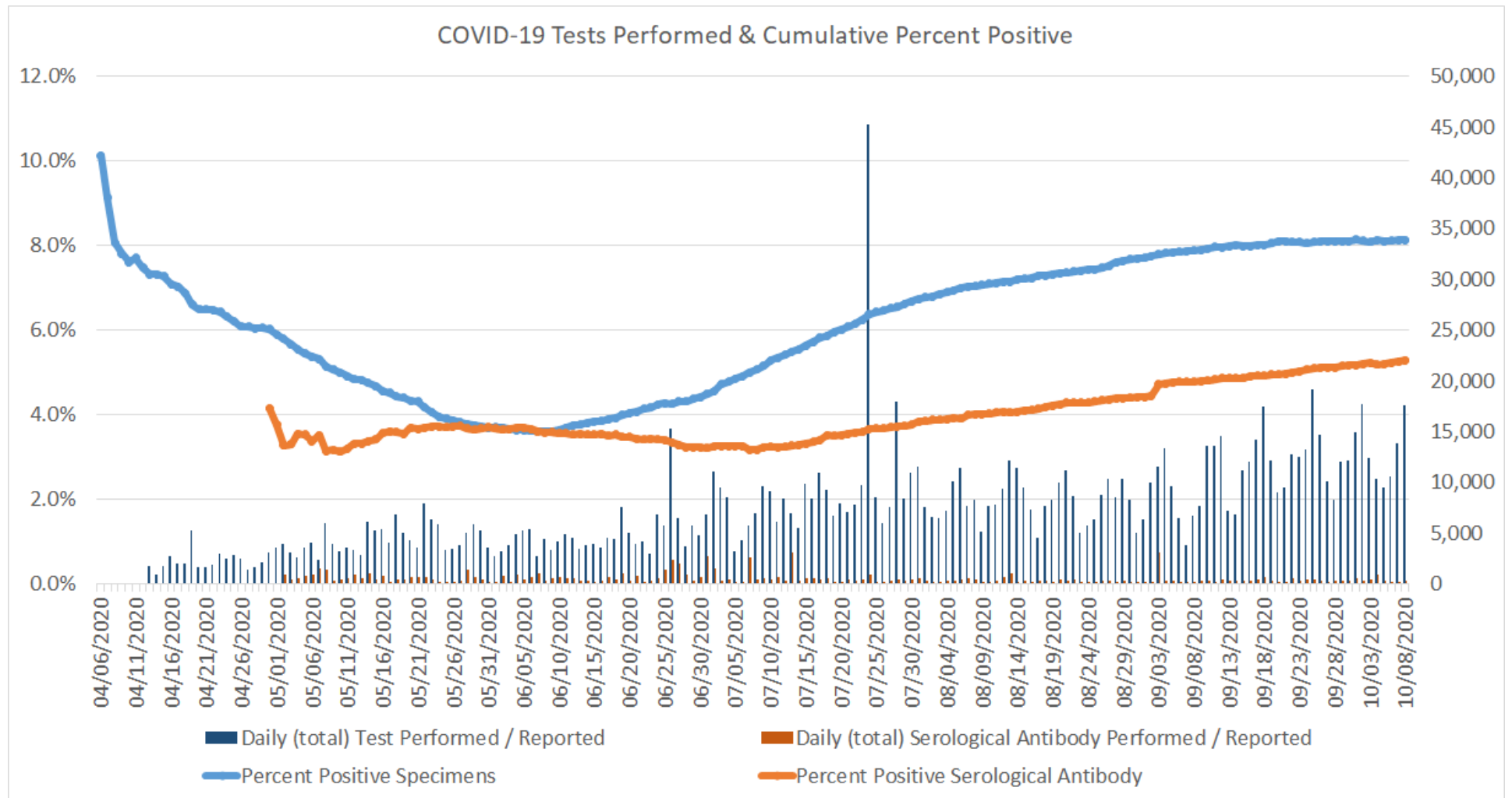
DISEASE TESTING

	Oct 2 – Oct 8	Total Number
Specimens tested ¹ , count	91,912	1,336,562
Specimens positive, count (%)	7,193 (7.8%)	108,540 (8.1%)
Johns Hopkins positivity %	7.9%	7.2%
Antibody tested, count	2,623	83,562
Antibody positive, count (%)	226 (8.6%)	4,411 (5.3%)

1. Includes state and private laboratories.

Note: Specimen counts may not reflect unique individuals.

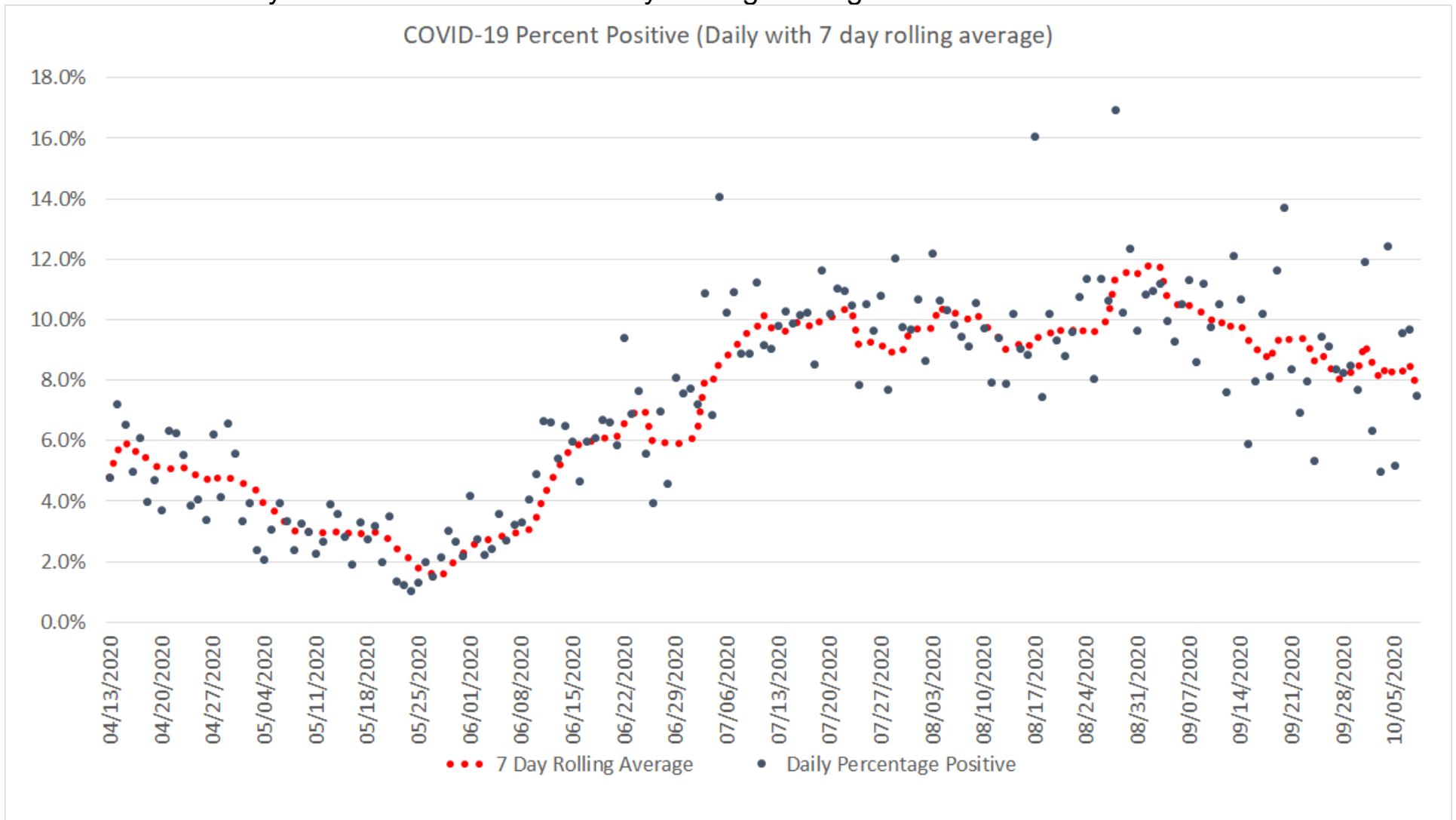
Positive tests as a percent of total tests



Oklahoma, October 8, 2020

Note: On July 24, 2020 fourteen labs began reporting to OSDH that had been testing since May 18, 2020.

Covid-19 Tests Daily Percent Positive with 7 Day Rolling Average



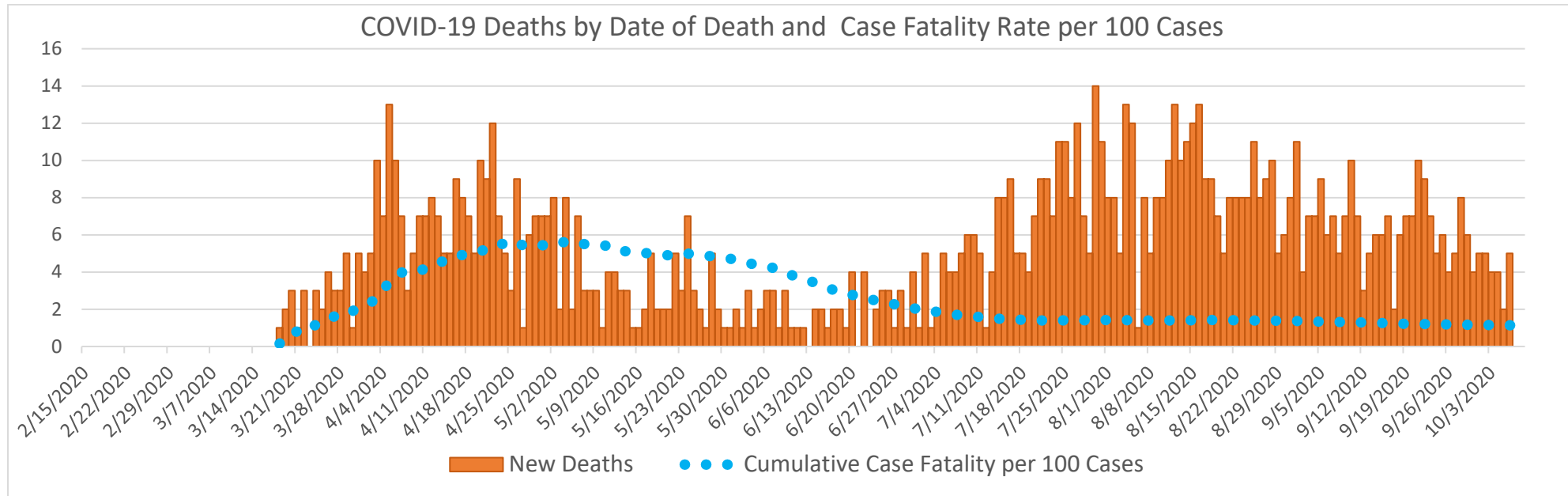
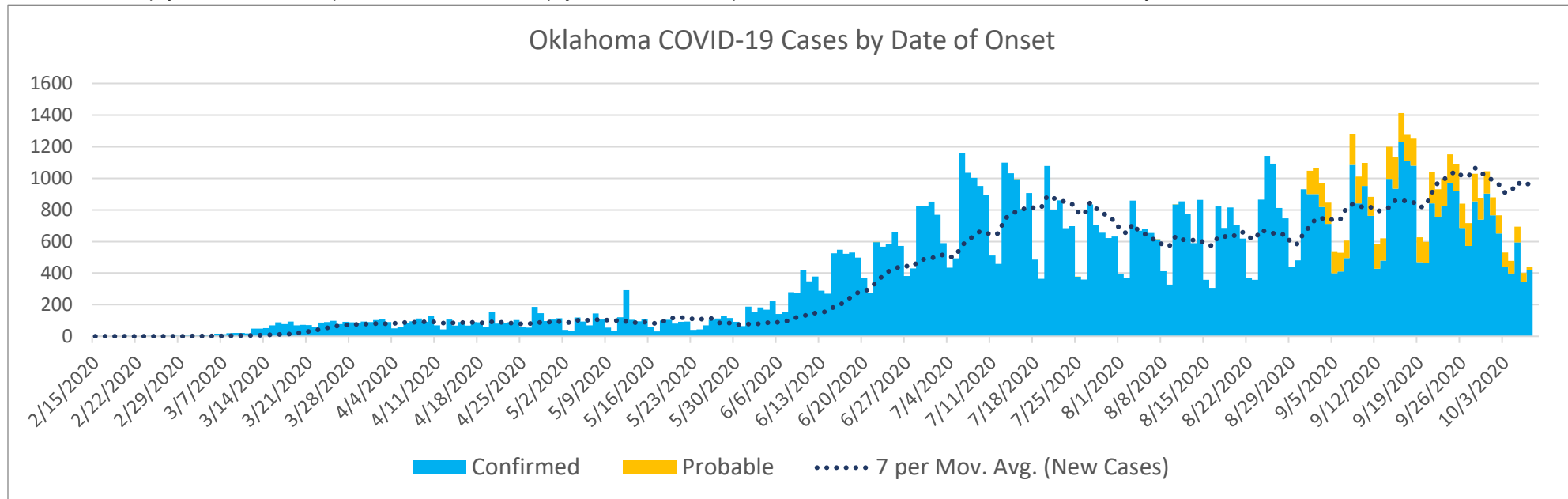
Oklahoma, October 8, 2020

EPIDEMIOLOGICAL ESTIMATES

	Estimate	Notes / Interpretation
Cases		
Cumulative incidence*	2,423.6 (per 100,000 persons)	From March 7 to October 8, there were about 2,423 (per 100,000) new cases of COVID-19 in Oklahoma.
Absolute change in cumulative incidence from previous week	1.8 (per 100,000 persons)	Compared to September 25 – October 1 there were 1 (per 100,000) more cases of COVID-19 reported in Oklahoma during the past week (Oct 2– Oct 8).
Disease Severity		
Case-fatality risk (crude)	1.1%	The estimate is not adjusted for the lag time from reporting to death (i.e., delay between the time someone dies and the time their death is reported). The fatality estimate could be lower due to cases that were undiagnosed or had milder symptoms.
Cumulative Hospitalization rate (overall)	178.1 (per 100,000 persons)	About 178 people per 100,000 have ever been hospitalized for COVID-19 during this outbreak.

CASES AND DEATHS

New cases (by date of onset) and new deaths (by date of death) of COVID-19 in Oklahoma, February–October 2020



Please note the different axes for new cases (top—from 0 to 1,600 for new cases) and new deaths (bottom—from 0 to 16 for new deaths). Additionally, a 7 day lag has been applied to the trend line based on information collected to-date for 7/19 and 7/25 where within 7 days of onset date approximately 80% of the cases had been reported.

Oklahoma Excess Death Analysis

- + indicates observed count above threshold
- Predicted number of deaths from all causes
- threshold for excess deaths

Weekly number of deaths (from all causes)

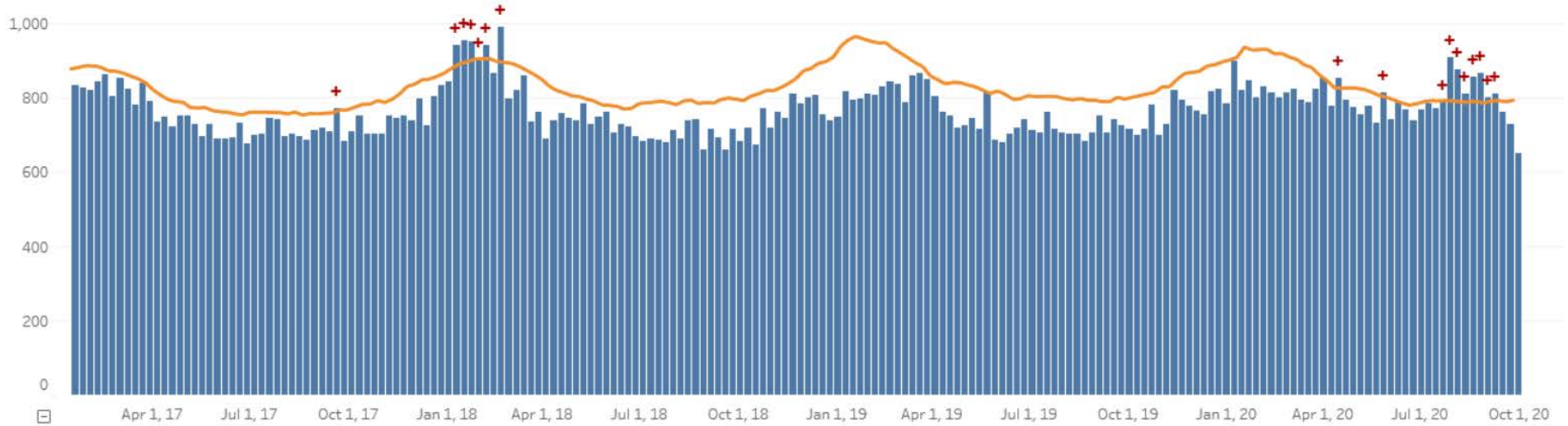
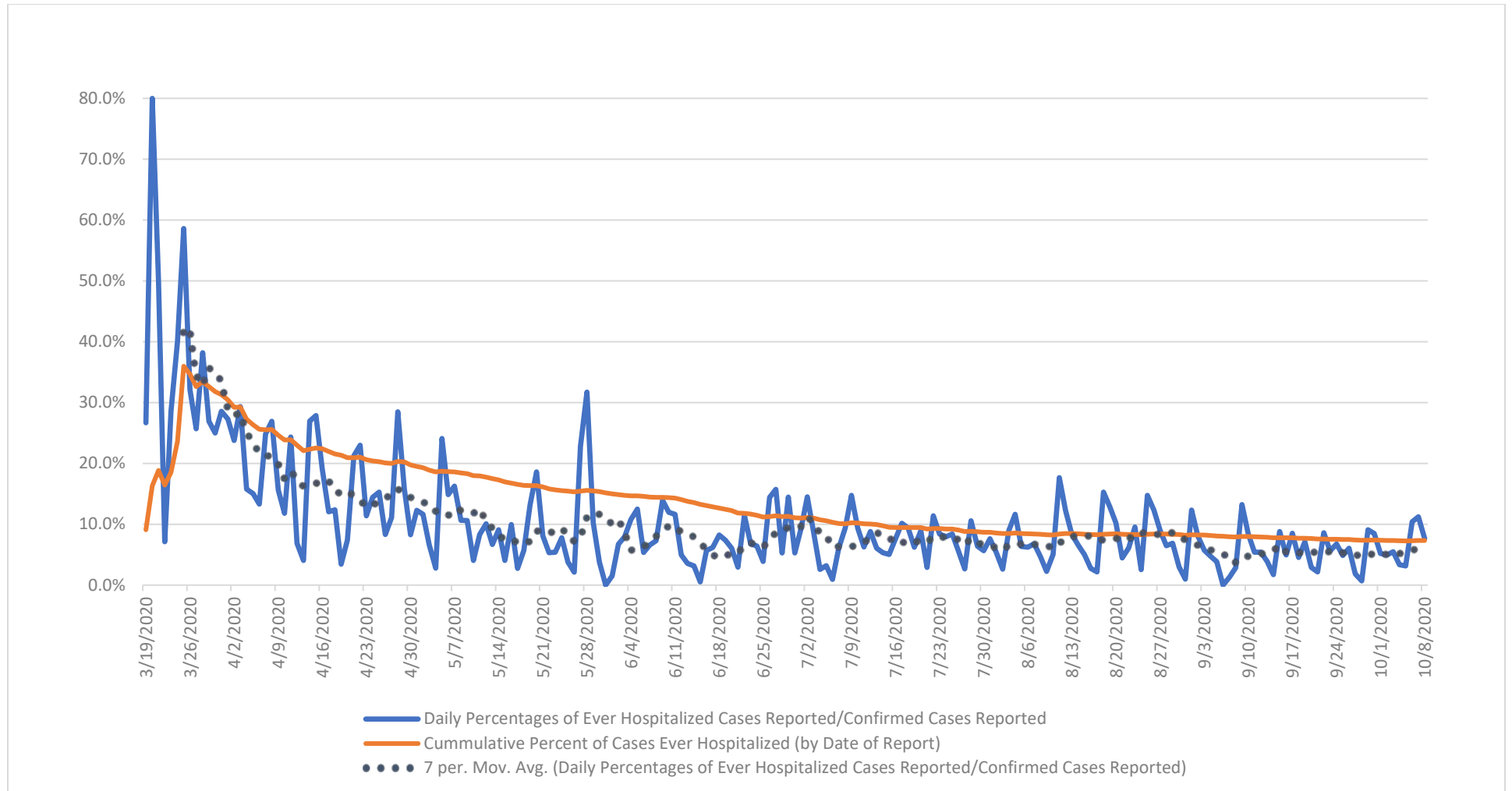


Figure notes: Contains data up to the week-ending date of September 26, 2020. Data in recent weeks are incomplete. Only 60% of the death records are submitted to NCHS within 1-days of the date of death, and completeness varies by jurisdiction.

Source: CDC, National Center for Health Statistics, https://www.cdc.gov/nchs/nvss/vsrr/covid19/excess_deaths.htm#dashboard, Oct 8, 2020 2:30pm

PERCENT OF CASES EVER HOSPITALIZED (by date of report)



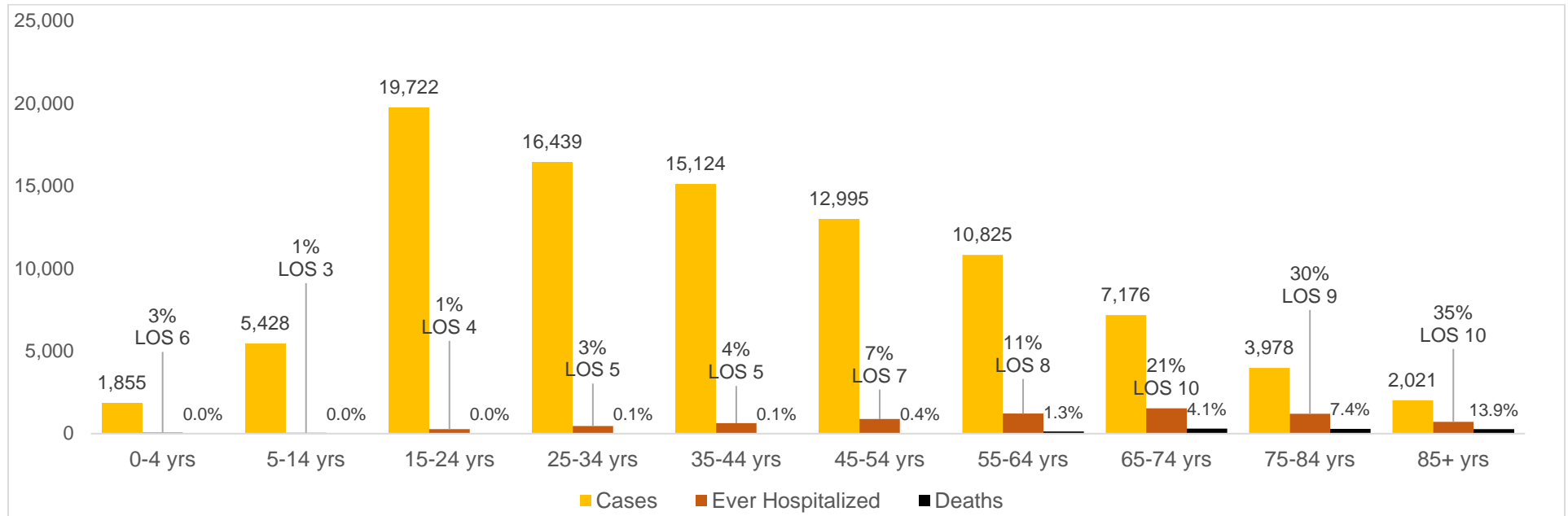
Source: OSDH Acute Disease Registry

TIME TO EVENT*

	N	Median	10 th to 90 th Percentile
Time from Symptom Onset to Test (Specimen Collection) ^{1,2}	44,459	2 days	0-9 days
Time from Symptom Onset to Hospitalization ^{1,3}	4,253	6 days	0-14 days
Length of Hospitalization Discharged Alive ⁴	3,195	4 days	1-15 days
Length of Hospitalization Deceased ⁴	838	10 days	2-26 days
Time from Symptom Onset to Death ^{1,5}	676	15 days	5-34 days

1. Limited to cases with a known date of symptom onset.
2. Limited to cases with a known date of a test (specimen collection) on or after the date of symptom onset.
3. Limited to cases with a known hospital admission date on or after the date of symptom onset.
4. Limited to cases with a known admission and discharge date from the hospital.
5. Limited to cases who are deceased.

CUMULATIVE CASES, PERCENT HOSPITALIZED, AVERAGE LENGTH OF STAY (LOS) FOR JULY CASES AND DEATHS BY AGE GROUP



DEMOGRAPHIC INFORMATION as of October 8, 2020

		Cases count (%) ¹		Deaths count (%) ¹		Cumulative Incidence Rate ²	Cumulative Mortality Rate ²
Oklahoma		95,564		1085		2,423.6	27.5
Gender							
	Male	45,704	(47.8)	602	(55.5)	2,340.1	30.8
	Female	49,860	(52.2)	483	(44.5)	2,505.5	24.3
Age group							
	Under 1- 4	1,855	(1.9)	0	(0.0)	712.3	0.0
	5-14	5,428	(5.7)	1	(0.1)	1,009.1	0.2
	15-24	19,722	(20.6)	1	(0.1)	3,667.0	0.2
	25-34	16,439	(17.2)	11	(1.0)	3,026.2	2.0
	35-44	15,124	(15.8)	17	(1.6)	3,084.1	3.5
	45-54	12,995	(13.6)	46	(4.2)	2,823.1	10.0
	55-64	10,825	(11.3)	136	(12.5)	2,193.8	27.6
	65-74	7,176	(7.5)	297	(27.4)	2,000.9	82.8
	75-84	3,978	(4.2)	296	(27.3)	2,119.2	157.7
	85+	2,021	(2.1)	280	(25.8)	2,761.1	382.5
	Unknown	1	(0.0)				
Race							
	American Indian or Alaska Native	9,403	(9.8)	105	(9.7)	3,061.0	34.2
	Asian or Pacific Islander	2,980	(3.1)	25	(2.3)	3,365.2	28.2
	Black or African American	6,768	(7.1)	70	(6.5)	2,352.6	24.3
	Multiracial/Other	3,834	(4.0)	35	(3.2)	926.6	8.5
	White	55,050	(57.6)	776	(71.5)	1,934.4	27.3
	Unknown	17,529	(18.3)	74	(6.8)		
Ethnicity							
	Hispanic or Latino	15,810	(16.5)	66	(6.1)	3,684.6	15.4
	Not Hispanic or Latino	59,744	(62.5)	890	(82.0)	1,700.2	25.3
	Unknown	20,010	(20.9)	129	(11.9)		

1. Percentages may not add up to 100 due to rounding.

2. Rate per 100,000 population

HEALTHCARE & NON-HEALTHCARE

Status	Non-Healthcare Worker count (%)*	Healthcare Worker count (%)*
Active	12,732 (14.0)	458 (9.4)
Deceased	1,075 (1.2)	10 (0.2)
Recovered	76,880 (84.8)	4,409 (90.4)
Total	90,687	4,877

* Percentages may not add up to 100 due to rounding.

CASES & DEATHS BY LONG-TERM CARE AND CORRECTIONAL FACILITIES

	Cases	Deaths
LTCF¹		
Residents	3,035	415
Staff	1,736	3
Total	4,771	418
Correctional Facilities²		
Inmates	2,452	16
Staff	484	2
Total	2,936	18

1. Long term care facility or nursing home

2. Correctional facilities include prisons, jails, and juvenile detention centers.

AGE DISTRIBUTION OF NEW CASES/DEATHS CONFIRMED FROM OCTOBER 2 - 8

Age group	New Cases*	Percentage	New Deaths	Percentage
Under 1- 4	123	1.7%	0	0.0%
5-14	436	6.1%	0	0.0%
15-24	1278	17.8%	0	0.0%
25-34	1002	13.9%	1	2.0%
35-44	1141	15.9%	1	2.0%
45-54	1019	14.2%	2	4.0%
55-64	944	13.1%	4	8.0%
65-74	690	9.6%	18	36.0%
75-84	369	5.1%	10	20.0%
85+	193	2.7%	14	28.0%

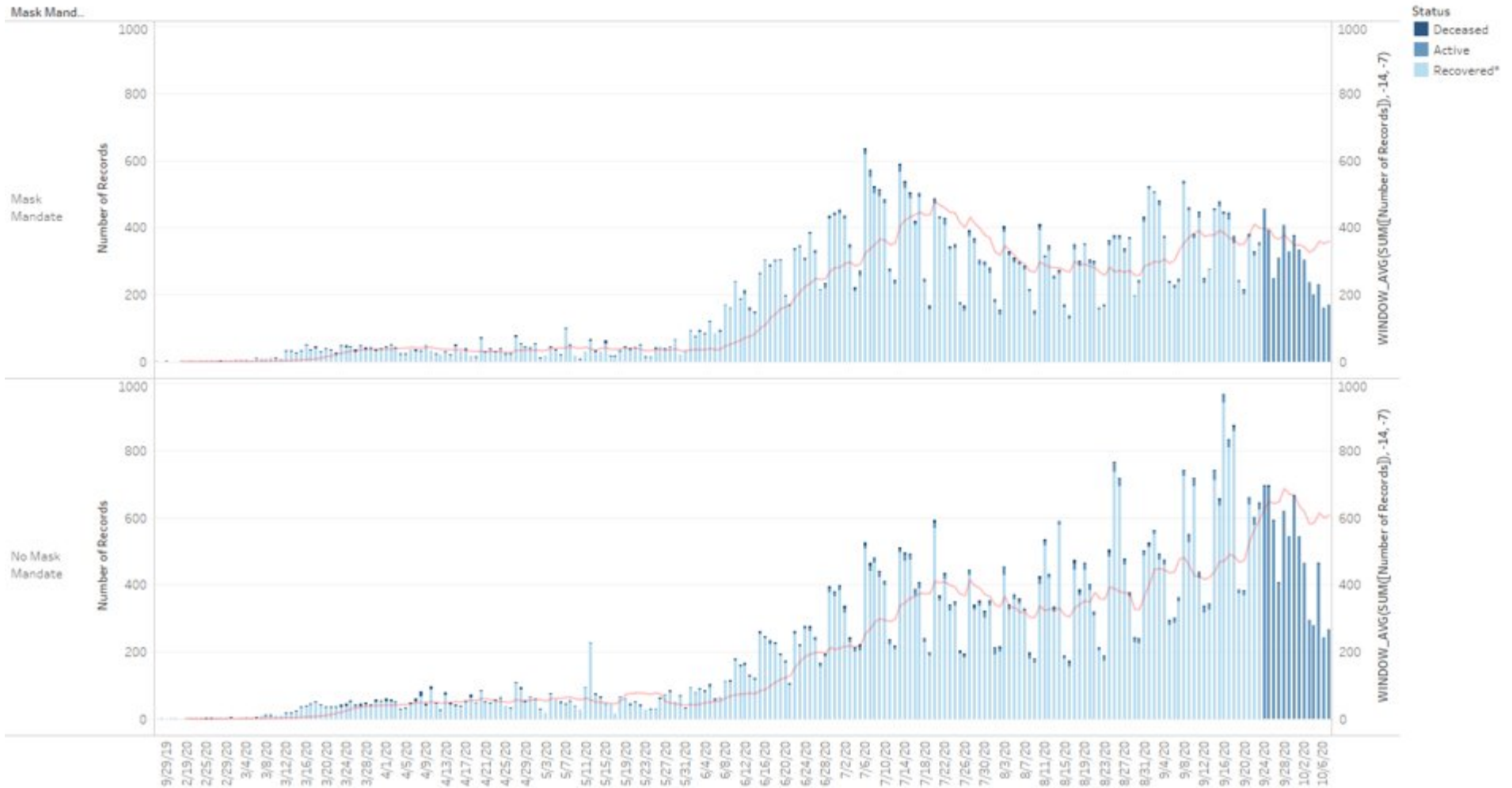
*One case this week has an unknown age.

IMPACT OF MASK MANDATES

As of 10/8/2020

	7 Day Average Number of Cases by date of Onset* with 7 day lag					7-Oct	Percent Change 8/1 to 10/7	Percent Change 9/1 to 10/7
	1-Aug	15-Aug	1-Sep	15-Sep	1-Oct			
Mask	327.8	271.6	289.6	391.4	348.6	359.1		
per 100,000 Pop!	20.3	16.9	18.0	24.3	21.6	22.3	10%	24%
No Mask	340.4	356	405	468.5	634.9	608	79%	50%
per 100,000 Pop!	14.5	15.2	17.3	20.0	27.1	25.9		

Status by Date of Onset as of 10/8/2020

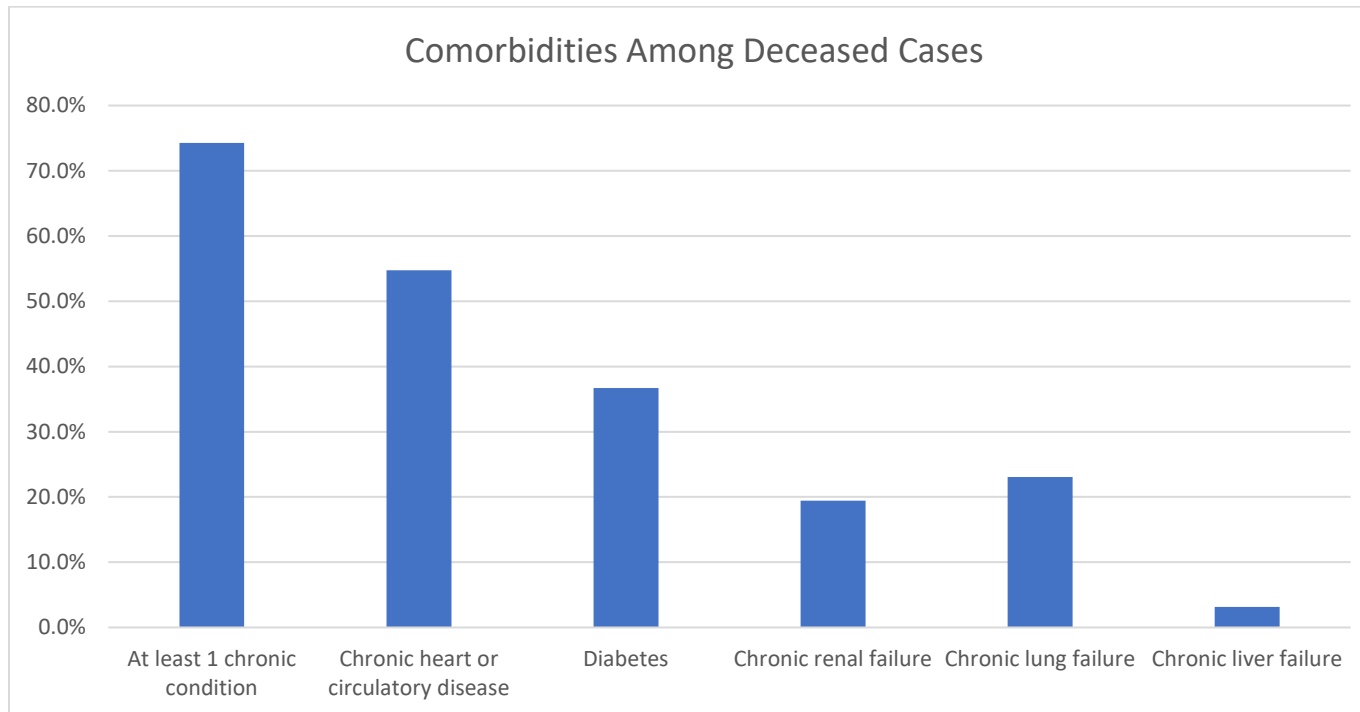


The trends of sum of Number of Records and WINDOW_AVG(SUM([Number of Records]), -14, -7) for Event Dt Day broken down by Mask Mandate. For pane Sum of Number of Records: Color shows details about Status. The view is filtered on Status, which keeps Active, Deceased and Recovered*.

COMORBIDITIES AMONG DECEASED CASES

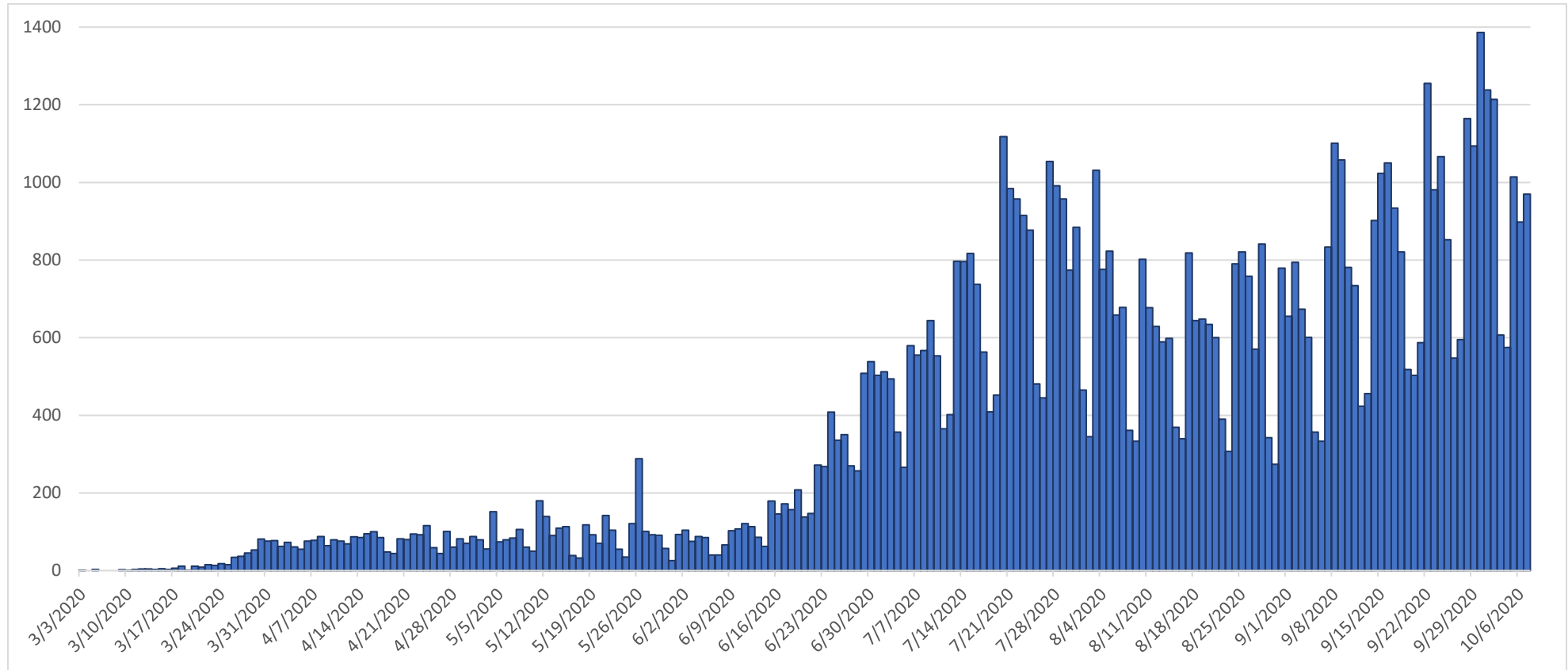
Comorbidities	Number (%)
At least 1 chronic condition*	806 (74.3)
Chronic heart or circulatory disease	594 (54.7)
Diabetes	398 (36.7)
Chronic renal failure	211 (19.4)
Chronic lung failure	250 (23.0)
Chronic liver failure	34 (3.1)

*Chronic conditions include; chronic heart or circulatory disease, diabetes, chronic lung failure, chronic liver failure and renal failure



RECOVERED CASES

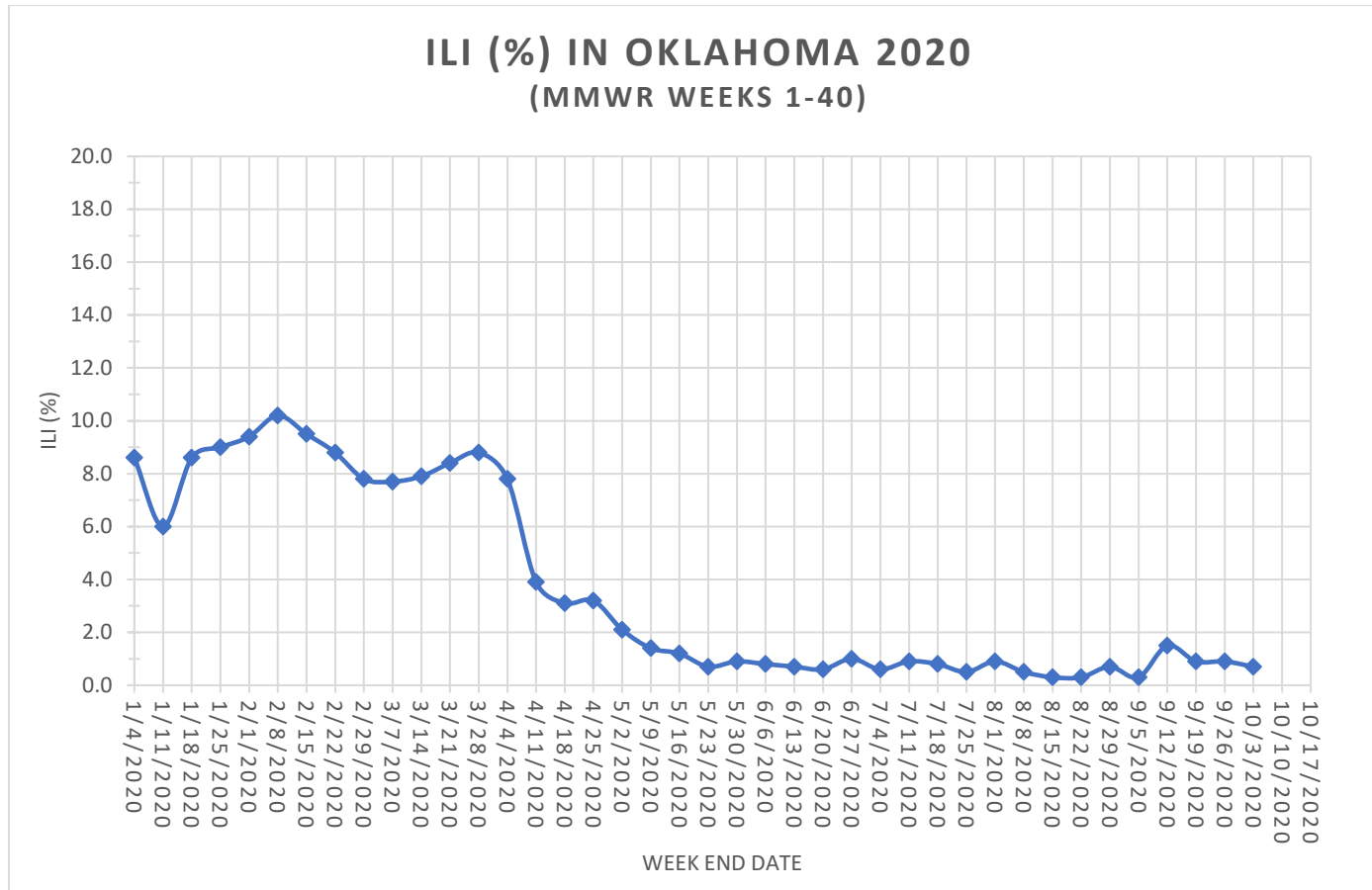
Distribution of recovered cases of COVID-19, March - October 2020, Oklahoma



Note: A recovered case is an individual currently not hospitalized or deceased AND 14 days after the onset of symptoms

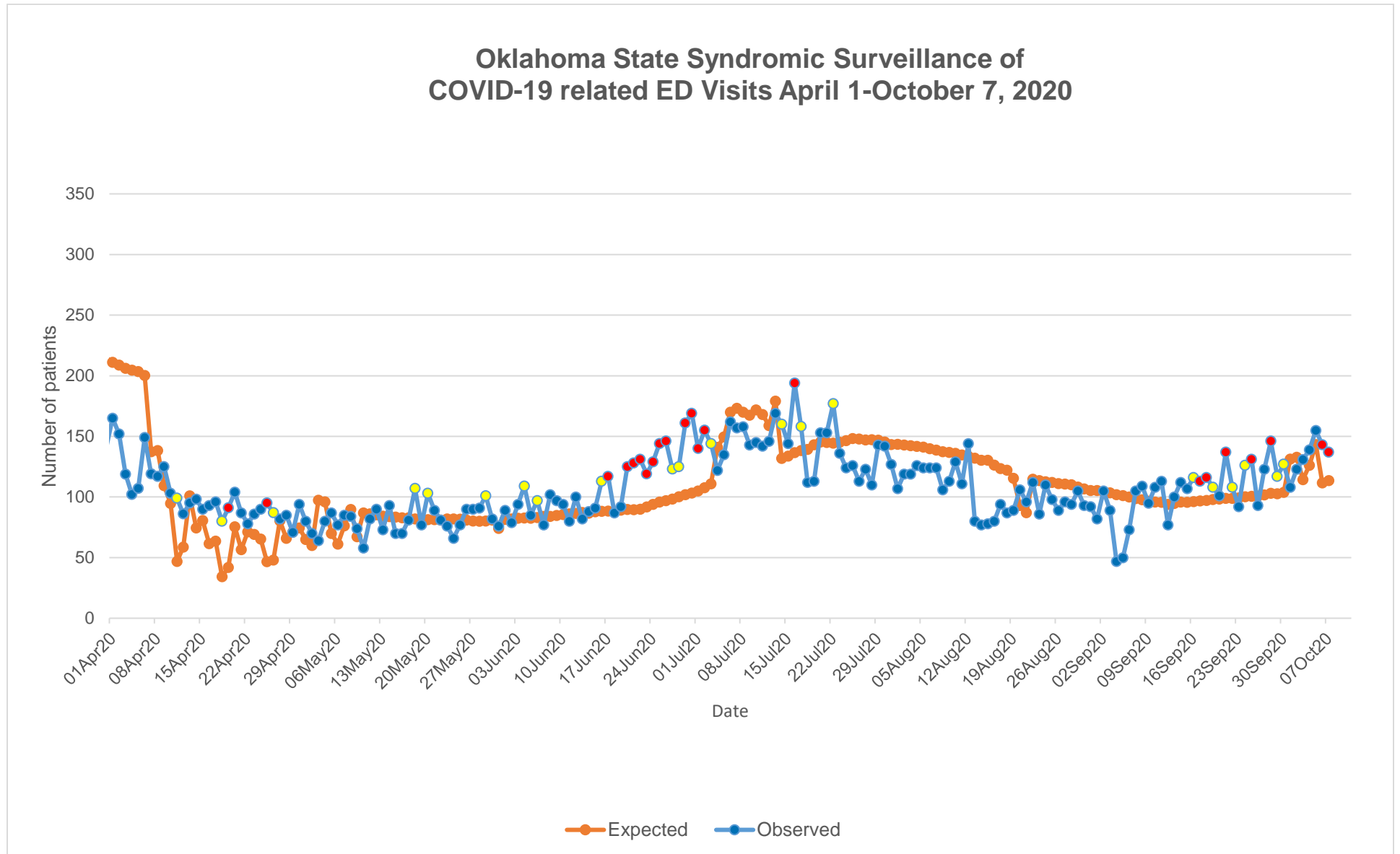
Symptoms Criteria

Weekly percentage of **Influenza-Like Illness (ILI)** (%), Morbidity and Mortality Weekly Report, Oklahoma, Jan–Oct 2020



Interpretation: Data on Influenza-Like Illness dropped to 0.7% of outpatient visits exhibiting fever with cough or sore throat. This week's value of 0.7% is below Oklahoma's baseline ILI of 3.9%. Please note that Oklahoma's baseline ILI increased slightly since the last report per guidance from the CDC.

COVID-19 Related Emergency Department Visits



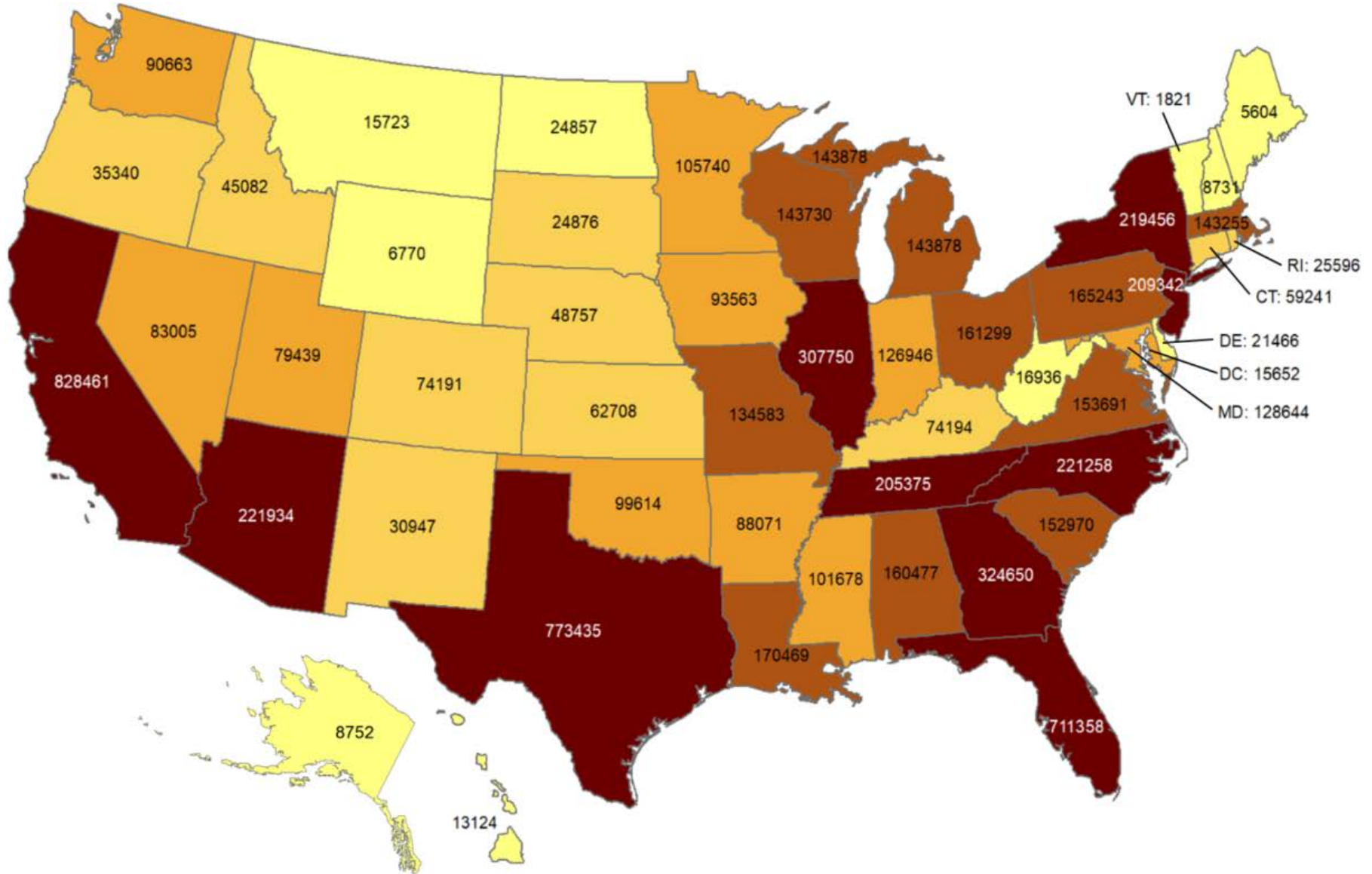
Interpretation: Data from syndromic surveillance shows that the number of COVID-19 related emergency department visits has been significantly higher than the expected range for 4 days in the past 2 weeks as indicated by the red dots on the observed line.

.....

OKLAHOMA IN COMPARISON

Total number of reported COVID-19 cases

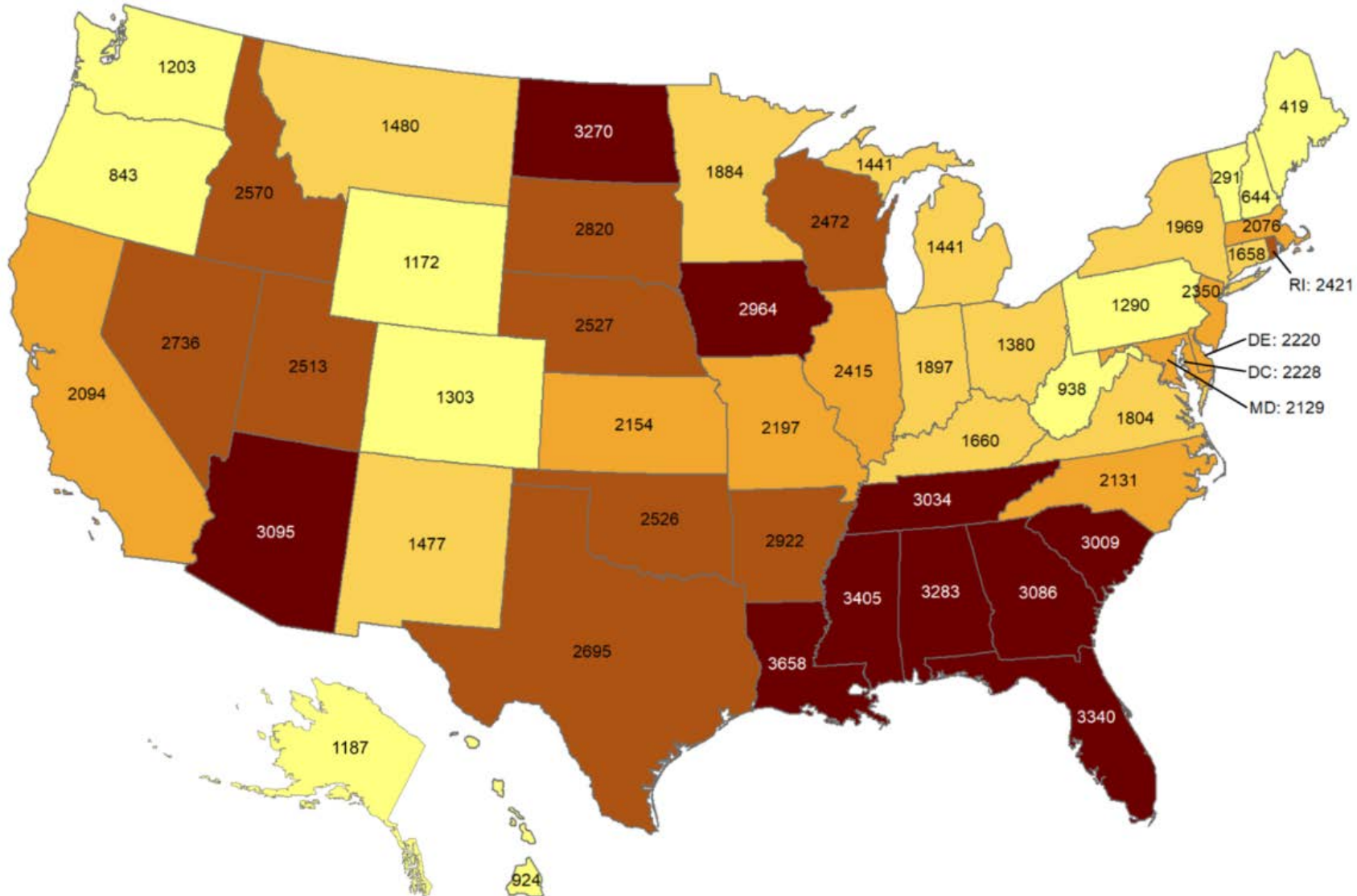
Oklahoma ranks **25** (out of all States and DC) in the total number of reported COVID-19 cases in the US.



Data from CDC. Available at <https://www.cdc.gov/covid-data-tracker/index.html>
Data as of October 7, 2020

Cumulative incidence of reported COVID-19 cases

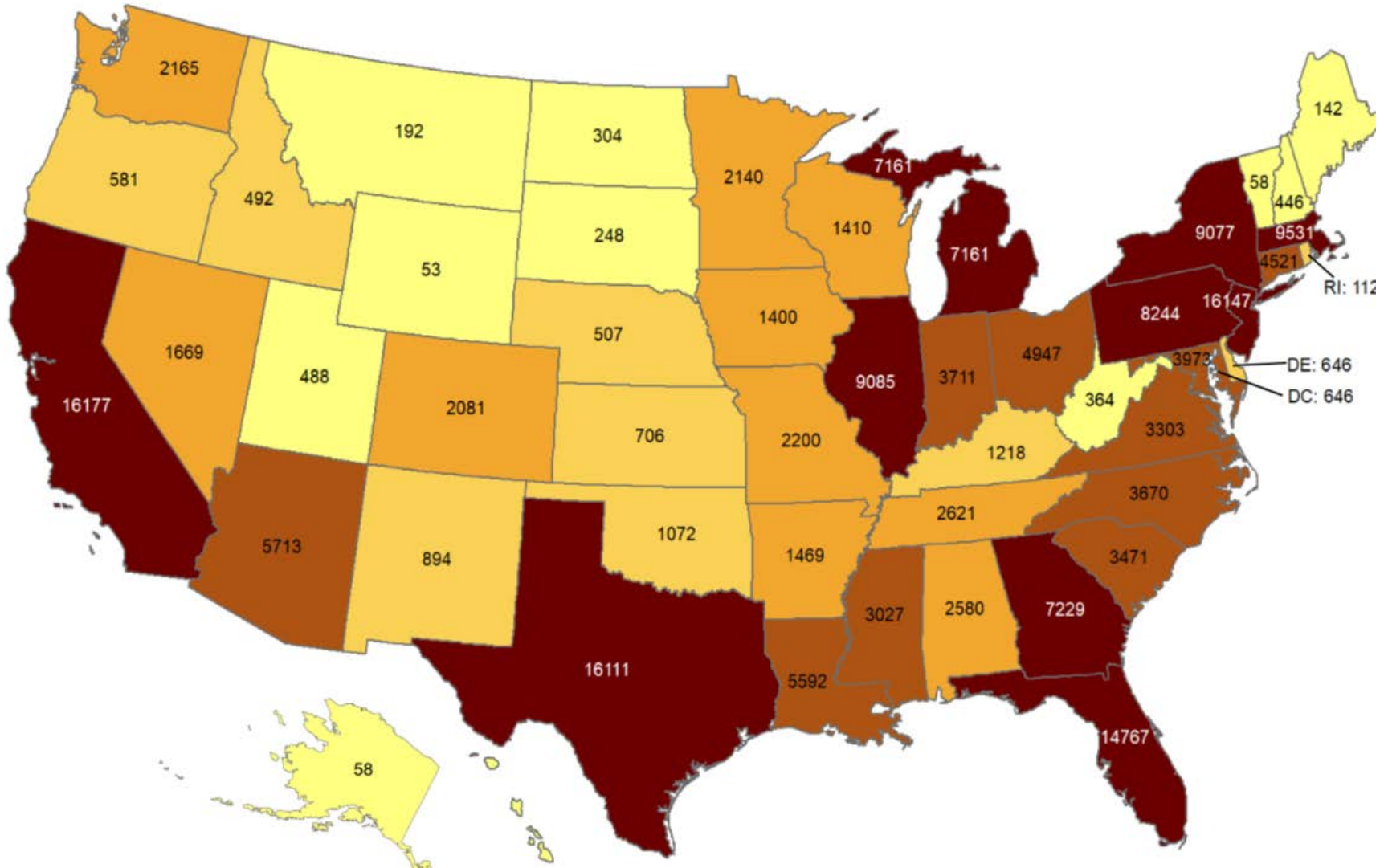
Oklahoma ranks **17** (out of all States and DC) in the cumulative incidence (per 100,000 persons) of reported COVID-19 cases in the US.



Data from CDC. Available at <https://www.cdc.gov/covid-data-tracker/index.html>
Data as of October 7, 2020

Total number of reported COVID-19 deaths

Oklahoma ranks **33** (out of all States and DC) in the total number of reported COVID-19 deaths in the US.



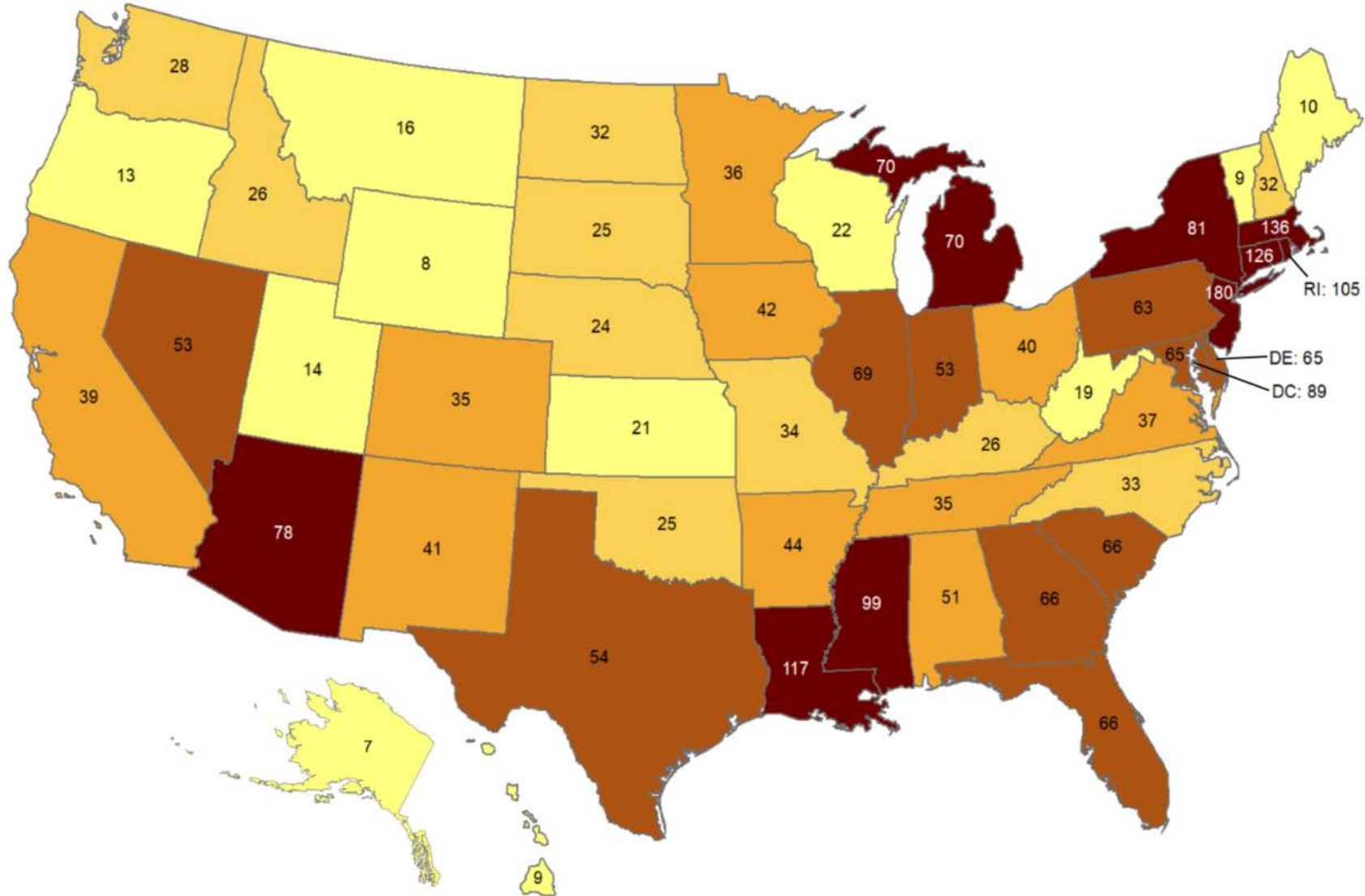
Data from CDC. Available at <https://www.cdc.gov/covid-data-tracker/index.html>

Data as of October 7, 2020

NOTE: CDC numbers include both Confirmed and Probable cases.

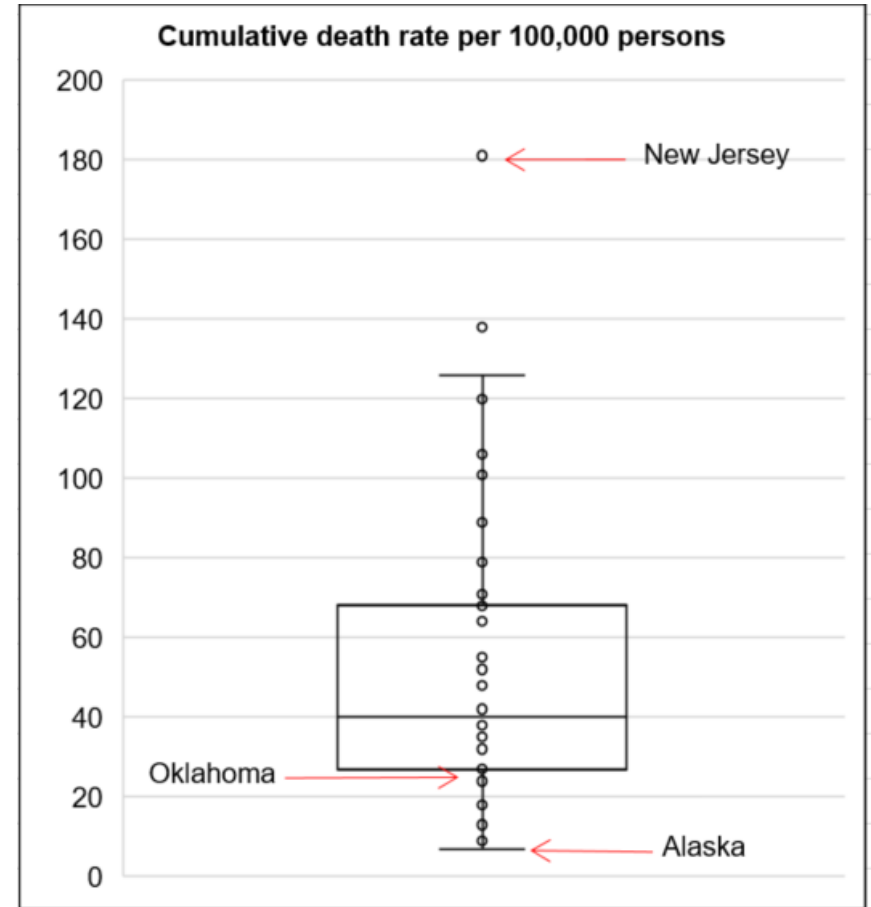
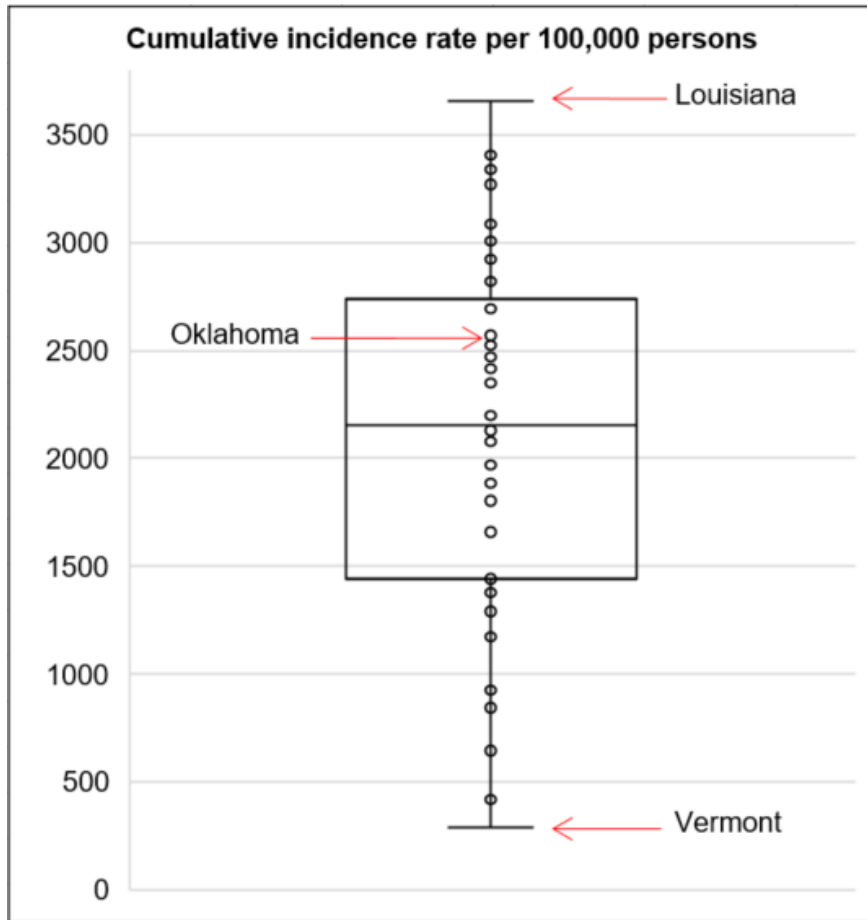
Cumulative death rate of reported COVID-19 cases

Oklahoma ranks **39** (out of all States and DC) in the cumulative death rate (per 100,000 persons) of reported COVID-19 cases in the US.



Data from CDC. Available at <https://www.cdc.gov/covid-data-tracker/index.html>
Data as of October 7, 2020

Cumulative incidence and cumulative death rate of reported COVID-19 cases



Interpretation: Oklahoma has cumulative incidence that is **above the median** of the US and cumulative death rate **below the median** of the US.

ACKNOWLEDGEMENT

The weekly report is made by possible through the efforts of county and city public health and healthcare professionals.

NOTES

Every effort is made to ensure accuracy and the data is up-to-date for the time period reported.
For daily updates on COVID-19, please visit <https://coronavirus.health.ok.gov/>

DISCLAIMER

The purpose of publishing aggregated statistical COVID-19 data through the OSDH Dashboard, the Executive Order Report, and the Weekly Epidemiology and Surveillance Report is to support the needs of the general public in receiving important and necessary information regarding the state of the health and safety of the citizens of Oklahoma. These resources may be used only for statistical purposes and may not be used in any way that would determine the identity of any reported cases.