

# OKLAHOMA COVID-19 WEEKLY REPORT

Weekly Epidemiology and Surveillance Report  
September 25 – October 1, 2020



**PURPOSE** To provide up-to-date weekly epidemiological data on COVID-19 in Oklahoma.

## SNAPSHOT

	Sept 25–Oct 1	Change <sup>1</sup>	Total
Cases	7,125	-10.1%	88,369
Recovered cases <sup>2</sup>	6,679	17.4%	74,483
Deaths	54	5.9%	1,035

1. Change from the week of Sept 18-24, 2020.

2. Currently not hospitalized or deceased and 14 days after onset/report.

Cases		Deaths	
Persons aged 50 and over	Females	Persons aged 50 and over	Males
<b>31%</b>	<b>52%</b>	<b>96%</b>	<b>55%</b>
of <u>cases</u>	of <u>cases</u>	of <u>deaths</u>	of <u>deaths</u>

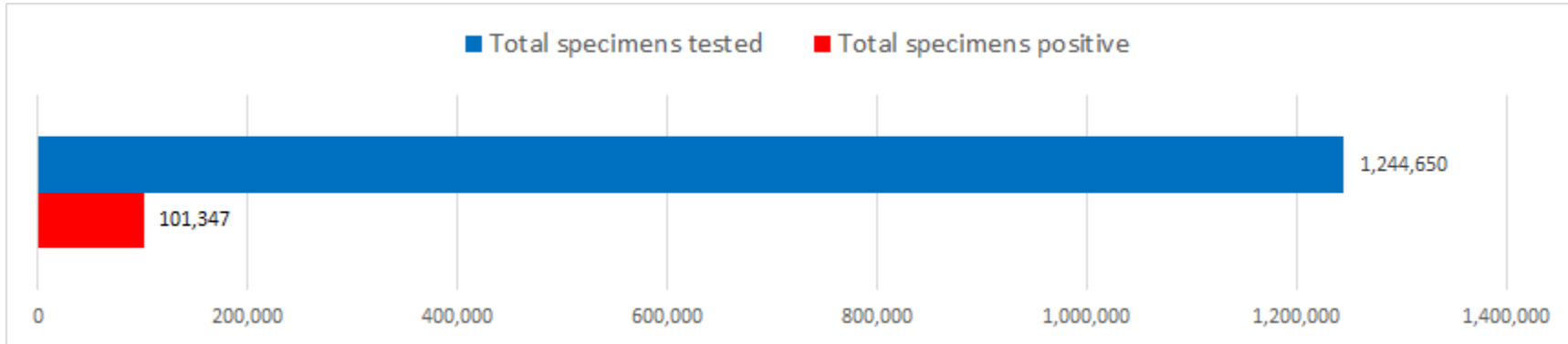
The average age of cases was **39** years.

The youngest case was **less than a year old** and the oldest case was **100+ years**.

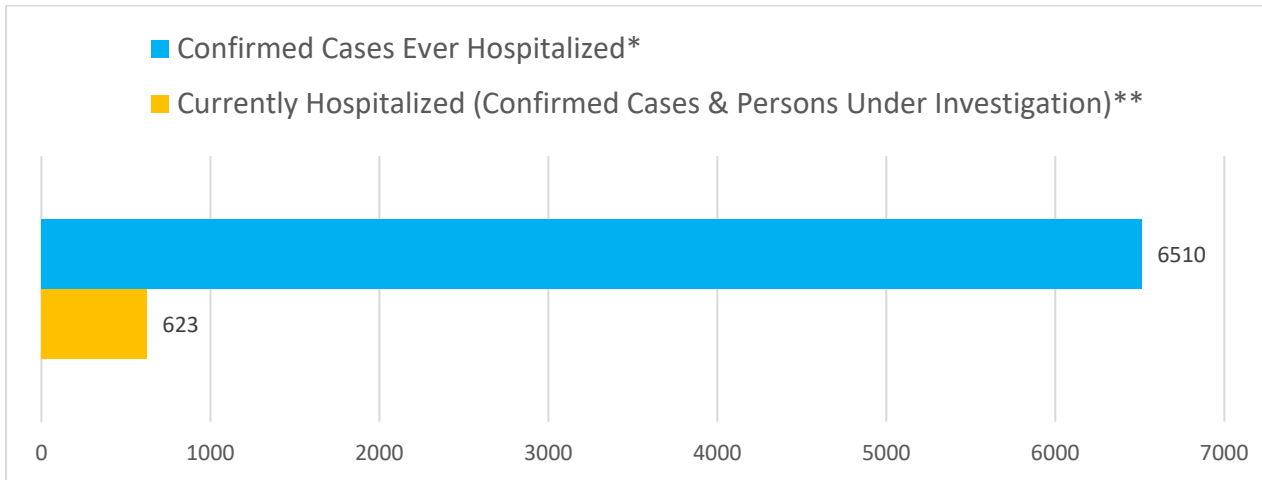
The average age of individuals who died was **75** years.

The youngest individual to die from COVID-19 was **less than 15 years** and the oldest was **100+ years**.

## Testing (reported through October 1)



## Hospitalizations



\*Ever hospitalized includes discharged, deceased, currently hospitalized and recovered as of 10/1/2020.

\*\*Source OSDH Beds Survey. Note, facility response rate of 94% on 10/1/2020.

---

## KEY POINTS

- **7,125** confirmed cases were reported in the past week  
10.1% decrease from the week before (Sept 18-24).
  - **54** deaths were reported in the past week  
5.9% increase from the week before (Sept 18-24).
  - **6,510 (7.4%)** confirmed cases have been hospitalized
  - **380** confirmed cases were reported to OSDH as hospitalized in the past week  
12.0% decrease from the week before (Sept 18-24)
  - **1,244,650** specimens have been tested in total
  - **77** counties (out of 77) have had at least one confirmed case of COVID-19
- 

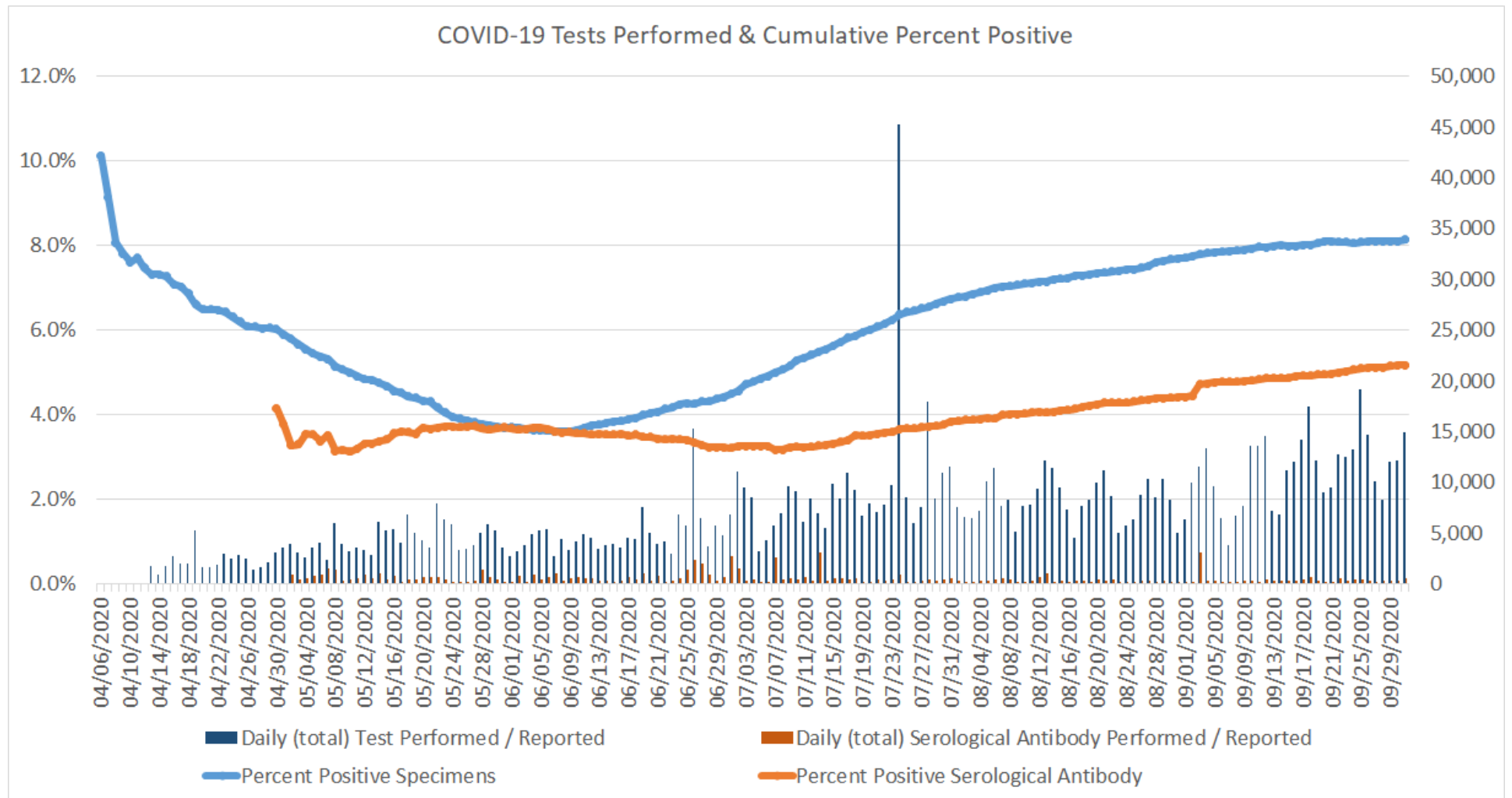
## DISEASE TESTING

	Sept 25 – Oct 01	Total Number
Specimens tested <sup>1</sup> , count	91,292	1,244,650
Specimens positive, count (%)	8,424 (9.2%)	101,347 (8.1%)
Johns Hopkins positivity %	8.0%	7.2%
Antibody tested, count	2,103	80,939
Antibody positive, count (%)	188 (8.9%)	4,185 (5.2%)

1. Includes state and private laboratories.

Note: Specimen counts may not reflect unique individuals.

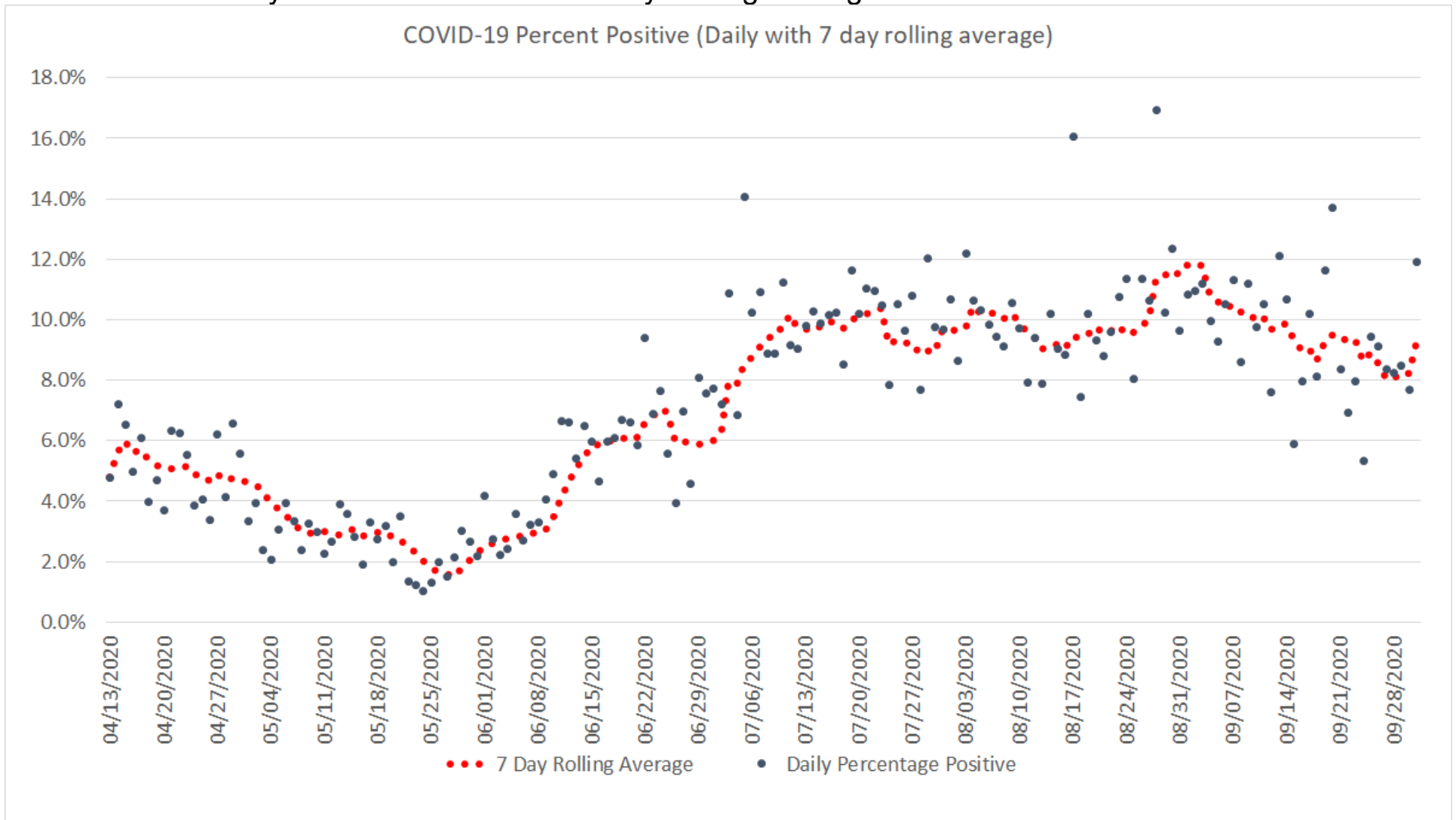
# Positive tests as a percent of total tests



Oklahoma, October 1, 2020

Note: On July 24, 2020 fourteen labs began reporting to OSDH that had been testing since May 18, 2020.

# Covid-19 Tests Daily Percent Positive with 7 Day Rolling Average



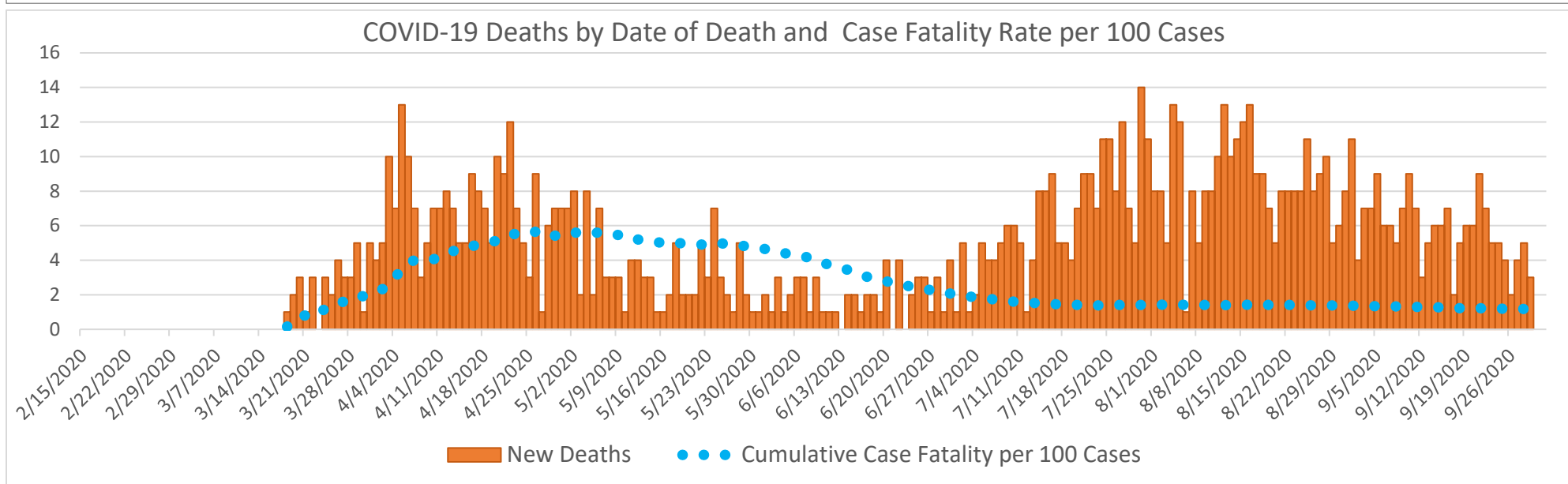
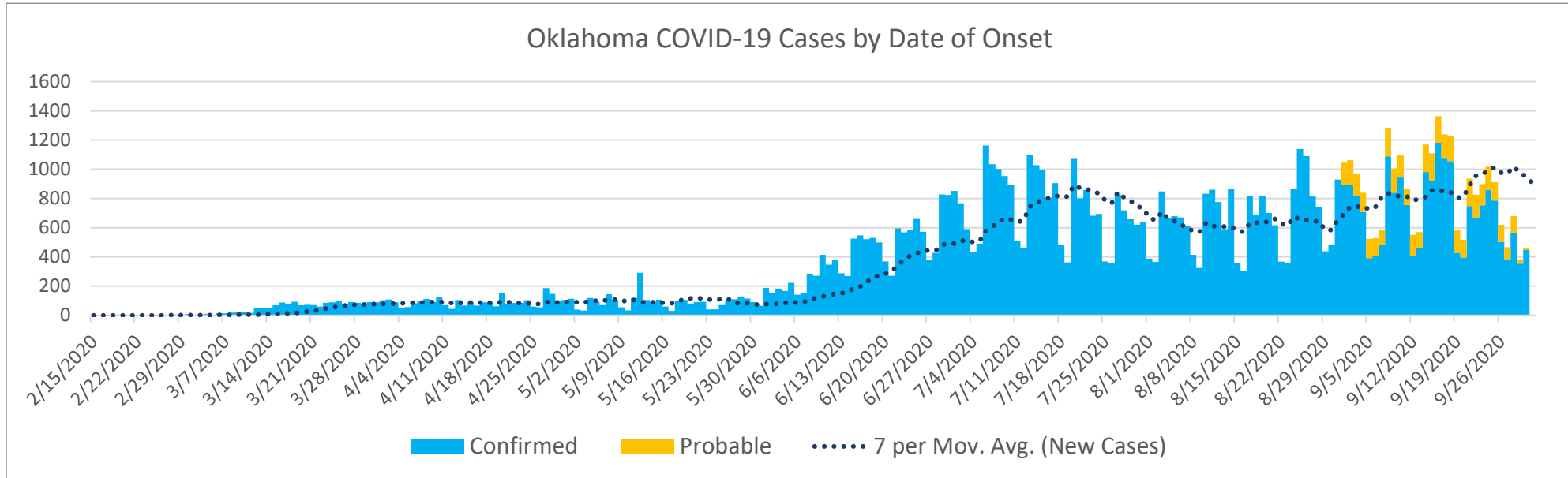
Oklahoma, October 1, 2020

## EPIDEMIOLOGICAL ESTIMATES

	Estimate	Notes / Interpretation
<b>Cases</b>		
Cumulative incidence*	2,241.1 (per 100,000 persons)	From March 7 to October 1, there were about 2,241 (per 100,000) new cases of COVID-19 in Oklahoma.
Absolute change in cumulative incidence from previous week	-20.3 (per 100,000 persons)	Compared to September 18 – September 24 there were 20 (per 100,000) less cases of COVID-19 reported in Oklahoma during the past week (Sep 25– Oct 1).
<b>Disease Severity</b>		
Case-fatality risk (crude)	1.2%	The estimate is not adjusted for the lag time from reporting to death (i.e., delay between the time someone dies and the time their death is reported). The fatality estimate could be lower due to cases that were undiagnosed or had milder symptoms.
Cumulative Hospitalization rate (overall)	165.1 (per 100,000 persons)	About 165 people per 100,000 have ever been hospitalized for COVID-19 during this outbreak.

# CASES AND DEATHS

New cases (by date of onset) and new deaths (by date of death) of COVID-19 in Oklahoma, February–September 2020



Please note the different axes for new cases (top—from 0 to 1,600 for new cases) and new deaths (bottom—from 0 to 16 for new deaths). Additionally, a 7 day lag has been applied to the trend line based on information collected to-date for 7/19 and 7/25 where within 7 days of onset date approximately 80% of the cases had been reported.

## Oklahoma Excess Death Analysis

- + indicates observed count above threshold
- Predicted number of deaths from all causes
- threshold for excess deaths

### Weekly number of deaths (from all causes)

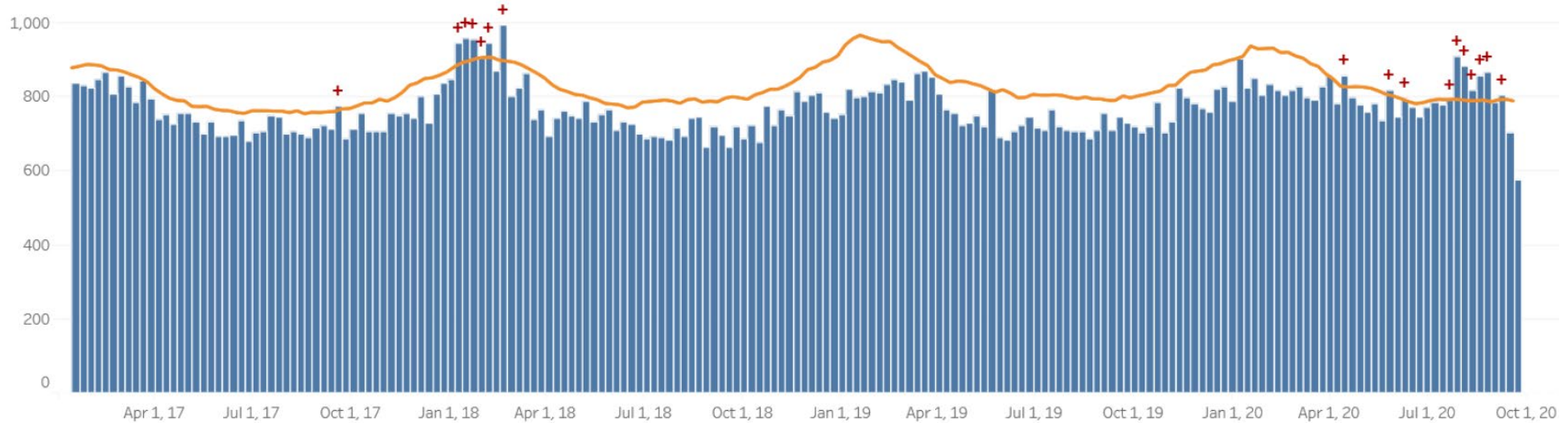
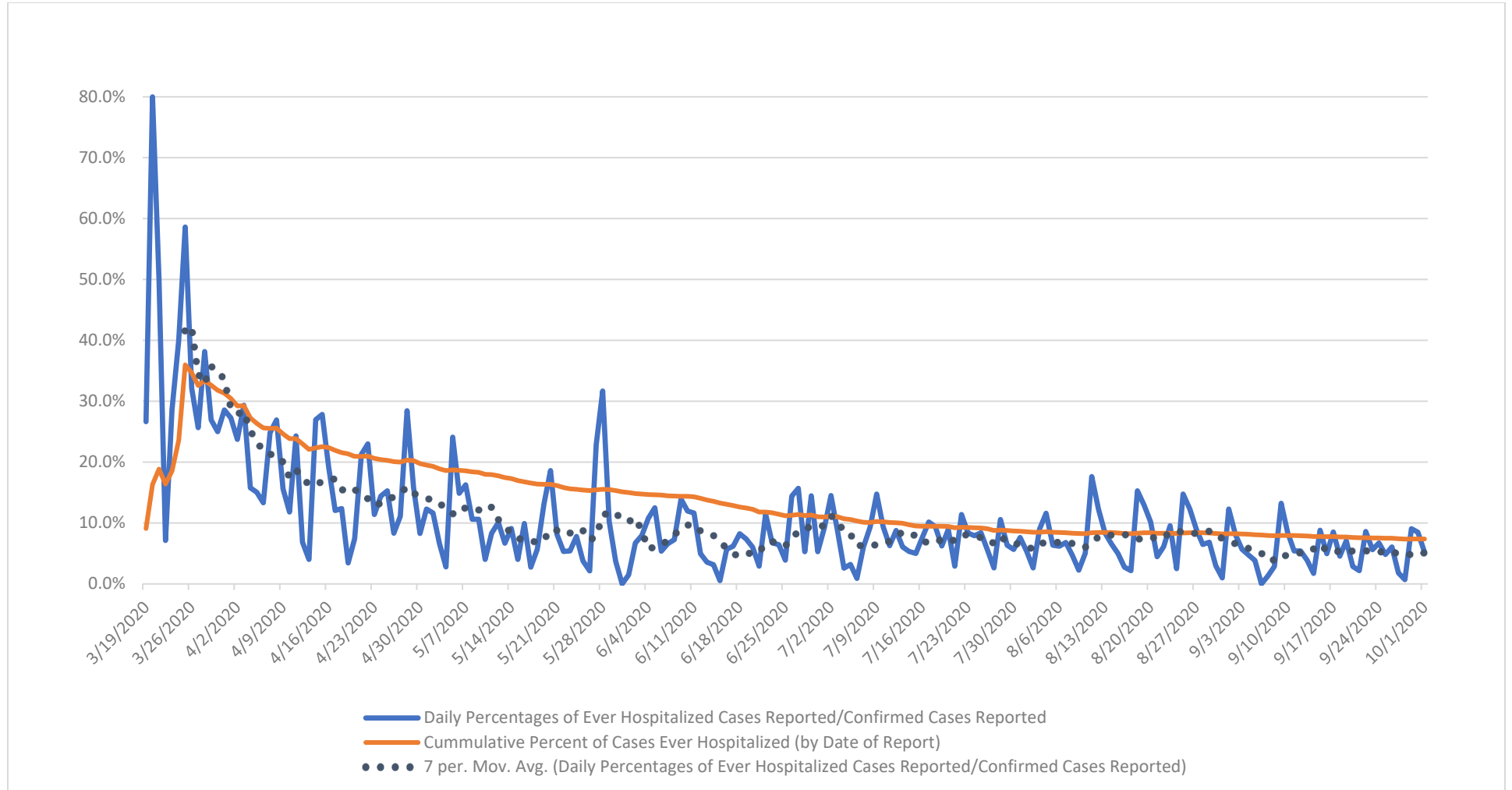


Figure notes: Contains data up to the week-ending date of September 19, 2020. Data in recent weeks are incomplete. Only 60% of the death records are submitted to NCHS within 1-days of the date of death, and completeness varies by jurisdiction.

Source: CDC, National Center for Health Statistics, [https://www.cdc.gov/nchs/nvss/vsrr/covid19/excess\\_deaths.htm#dashboard](https://www.cdc.gov/nchs/nvss/vsrr/covid19/excess_deaths.htm#dashboard), Sep 30, 2020 10:30am



## PERCENT OF CASES EVER HOSPITALIZED (by date of report)



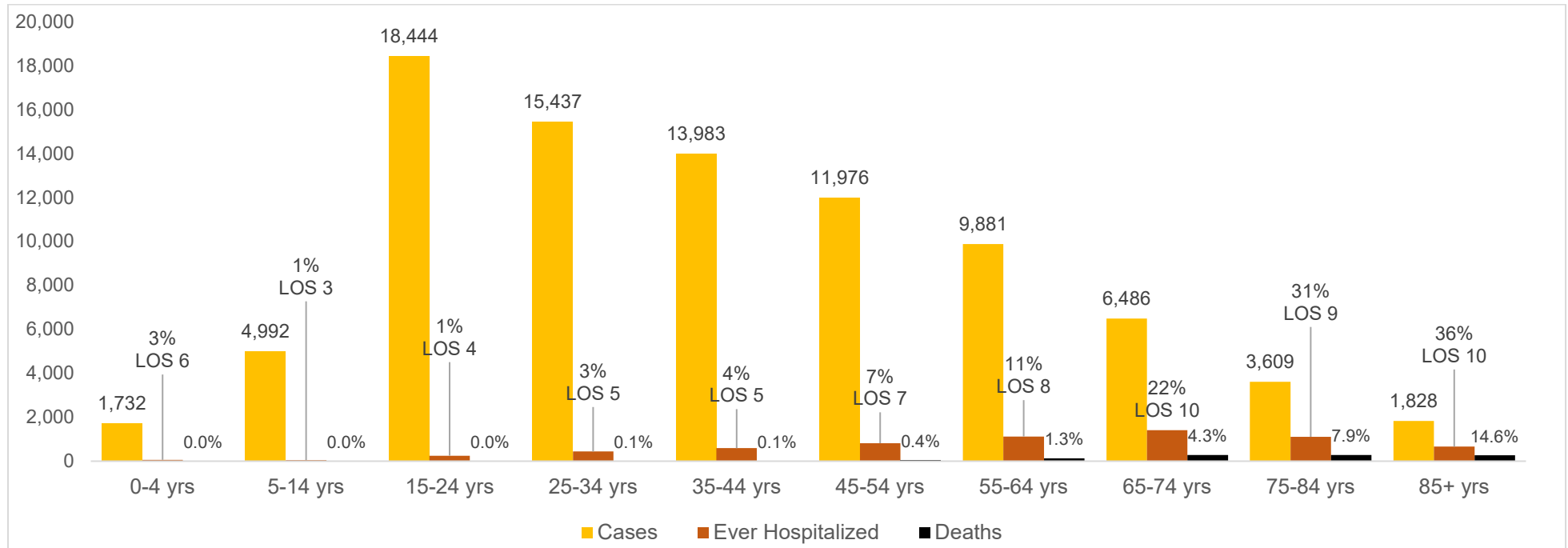
Source: OSDH Acute Disease Registry

## TIME TO EVENT\*

	N	Median	10 <sup>th</sup> to 90 <sup>th</sup> Percentile
Time from Symptom Onset to Test (Specimen Collection) <sup>1,2</sup>	40,644	2 days	0-9 days
Time from Symptom Onset to Hospitalization <sup>1,3</sup>	3,946	6 days	0-14 days
Length of Hospitalization Discharged Alive <sup>4</sup>	2,988	4 days	1-15 days
Length of Hospitalization Deceased <sup>4</sup>	796	10 days	2-25 days
Time from Symptom Onset to Death <sup>1,5</sup>	644	15 days	5-34 days

1. Limited to cases with a known date of symptom onset.
2. Limited to cases with a known date of a test (specimen collection) on or after the date of symptom onset.
3. Limited to cases with a known hospital admission date on or after the date of symptom onset.
4. Limited to cases with a known admission and discharge date from the hospital.
5. Limited to cases who are deceased.

## CUMULATIVE CASES, PERCENT HOSPITALIZED, AVERAGE LENGTH OF STAY (LOS) FOR JULY CASES AND DEATHS BY AGE GROUP



## DEMOGRAPHIC INFORMATION as of October 1, 2020

		Cases count (%) <sup>1</sup>		Deaths count (%) <sup>1</sup>		Cumulative Incidence Rate <sup>2</sup>	Cumulative Mortality Rate <sup>2</sup>
<b>Oklahoma</b>		<b>88,369</b>		<b>1035</b>		<b>2,241.1</b>	<b>26.2</b>
<b>Gender</b>							
	Male	<b>42,323</b>	<b>(47.9)</b>	<b>570</b>	<b>(55.1)</b>	<b>2,167.0</b>	<b>29.2</b>
	Female	<b>46,046</b>	<b>(52.1)</b>	<b>465</b>	<b>(44.9)</b>	<b>2,313.8</b>	<b>23.4</b>
<b>Age group</b>							
	Under 1- 4	<b>1,732</b>	<b>(2.0)</b>	<b>0</b>	<b>(0.0)</b>	<b>665.1</b>	<b>0.0</b>
	5-14	<b>4,992</b>	<b>(5.6)</b>	<b>1</b>	<b>(0.1)</b>	<b>928.0</b>	<b>0.2</b>
	15-24	<b>18,444</b>	<b>(20.9)</b>	<b>1</b>	<b>(0.1)</b>	<b>3,429.3</b>	<b>0.2</b>
	25-34	<b>15,437</b>	<b>(17.5)</b>	<b>10</b>	<b>(1.0)</b>	<b>2,841.8</b>	<b>1.8</b>
	35-44	<b>13,983</b>	<b>(15.8)</b>	<b>16</b>	<b>(1.5)</b>	<b>2,851.4</b>	<b>3.3</b>
	45-54	<b>11,976</b>	<b>(13.6)</b>	<b>44</b>	<b>(4.3)</b>	<b>2,601.7</b>	<b>9.6</b>
	55-64	<b>9,881</b>	<b>(11.2)</b>	<b>132</b>	<b>(12.8)</b>	<b>2,002.5</b>	<b>26.8</b>
	65-74	<b>6,486</b>	<b>(7.3)</b>	<b>279</b>	<b>(27.0)</b>	<b>1,808.5</b>	<b>77.8</b>
	75-84	<b>3,609</b>	<b>(4.1)</b>	<b>286</b>	<b>(27.6)</b>	<b>1,922.6</b>	<b>152.4</b>
	85+	<b>1,828</b>	<b>(2.1)</b>	<b>266</b>	<b>(25.7)</b>	<b>2,497.4</b>	<b>363.4</b>
	Unknown	<b>1</b>	<b>(0.0)</b>				
<b>Race</b>							
	American Indian or Alaska Native	<b>8,647</b>	<b>(9.8)</b>	<b>101</b>	<b>(9.8)</b>	<b>2,814.9</b>	<b>32.9</b>
	Asian or Pacific Islander	<b>2,863</b>	<b>(3.2)</b>	<b>24</b>	<b>(2.3)</b>	<b>3,233.1</b>	<b>27.1</b>
	Black or African American	<b>6,301</b>	<b>(7.1)</b>	<b>66</b>	<b>(6.4)</b>	<b>2,190.3</b>	<b>22.9</b>
	Multiracial/Other	<b>3,516</b>	<b>(4.0)</b>	<b>33</b>	<b>(3.2)</b>	<b>849.8</b>	<b>8.0</b>
	White	<b>50,471</b>	<b>(57.1)</b>	<b>738</b>	<b>(71.3)</b>	<b>1,773.5</b>	<b>25.9</b>
	Unknown	<b>16,571</b>	<b>(18.8)</b>	<b>73</b>	<b>(7.1)</b>		
<b>Ethnicity</b>							
	Hispanic or Latino	<b>15,038</b>	<b>(17.0)</b>	<b>66</b>	<b>(6.4)</b>	<b>3,504.7</b>	<b>15.4</b>
	Not Hispanic or Latino	<b>54,598</b>	<b>(61.8)</b>	<b>842</b>	<b>(81.4)</b>	<b>1,553.7</b>	<b>24.0</b>
	Unknown	<b>18,733</b>	<b>(21.2)</b>	<b>127</b>	<b>(12.3)</b>		

1. Percentages may not add up to 100 due to rounding.

2. Rate per 100,000 population

## HEALTHCARE & NON-HEALTHCARE

Status	Non-Healthcare Worker count (%)*	Healthcare Worker count (%)*
Active	12,450 (14.8)	401 (8.9)
Deceased	1,025 (1.2)	10 (0.2)
Recovered	70,406 (83.9)	4,077 (90.8)
<b>Total</b>	<b>83,881</b>	<b>4,488</b>

\* Percentages may not add up to 100 due to rounding.

## CASES & DEATHS BY LONG-TERM CARE AND CORRECTIONAL FACILITIES

	Cases	Deaths
<b>LTCF<sup>1</sup></b>		
Residents	2,807	409
Staff	1,610	3
<b>Total</b>	<b>4,417</b>	<b>412</b>
<b>Correctional Facilities<sup>2</sup></b>		
Inmates	2,301	11
Staff	435	2
<b>Total</b>	<b>2,736</b>	<b>13</b>

1. Long term care facility or nursing home

2. Correctional facilities include prisons, jails, and juvenile detention centers.

## AGE DISTRIBUTION OF NEW CASES/DEATHS CONFIRMED FROM SEPTEMBER 25 – OCTOBER 1

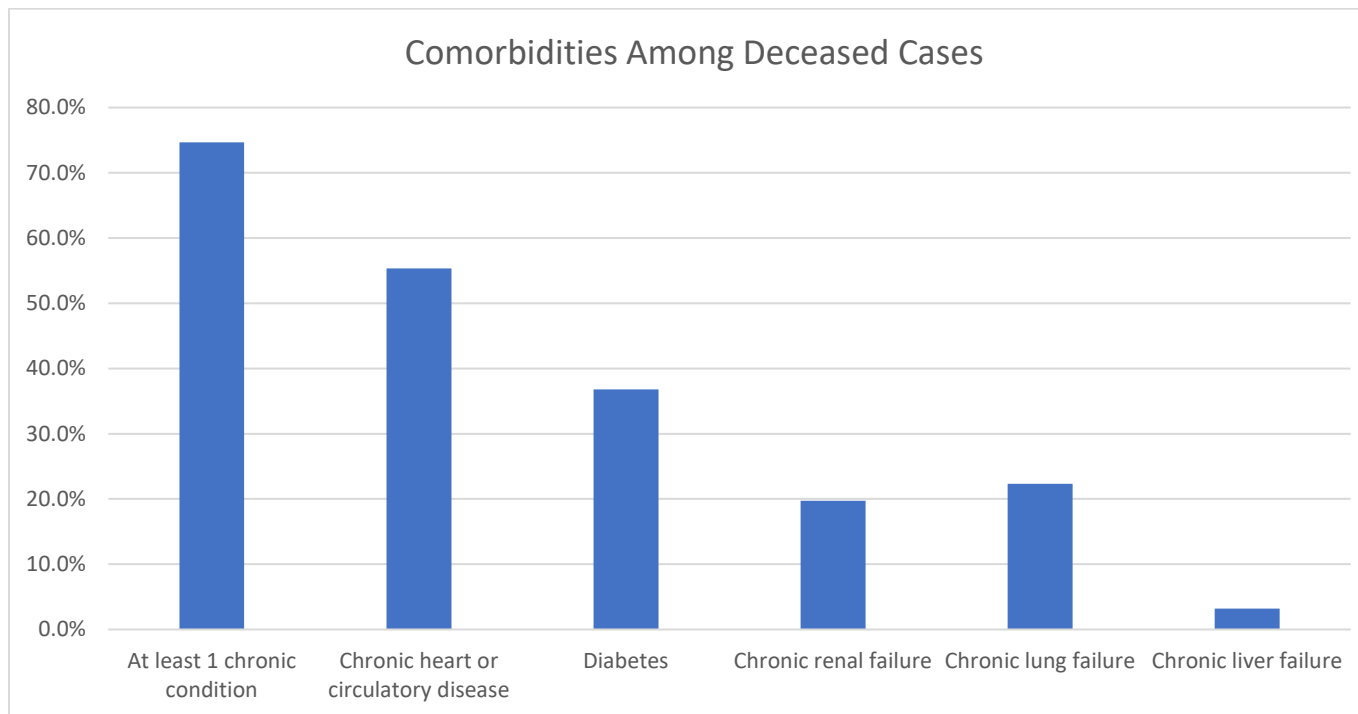
Age group	New Cases*	Percentage	New Deaths	Percentage
Under 1- 4	<b>100</b>	<b>1.4%</b>	<b>0</b>	<b>0.0%</b>
5-14	<b>449</b>	<b>6.3%</b>	<b>0</b>	<b>0.0%</b>
15-24	<b>1427</b>	<b>20.0%</b>	<b>0</b>	<b>0.0%</b>
25-34	<b>1062</b>	<b>14.9%</b>	<b>2</b>	<b>3.7%</b>
35-44	<b>1057</b>	<b>14.8%</b>	<b>1</b>	<b>1.9%</b>
45-54	<b>1081</b>	<b>15.2%</b>	<b>1</b>	<b>1.9%</b>
55-64	<b>925</b>	<b>13.0%</b>	<b>5</b>	<b>9.3%</b>
65-74	<b>562</b>	<b>7.9%</b>	<b>13</b>	<b>24.1%</b>
75-84	<b>321</b>	<b>4.5%</b>	<b>13</b>	<b>24.1%</b>
85+	<b>141</b>	<b>2.0%</b>	<b>19</b>	<b>35.2%</b>

\*One case this week has an unknown age.

## COMORBIDITIES AMONG DECEASED CASES

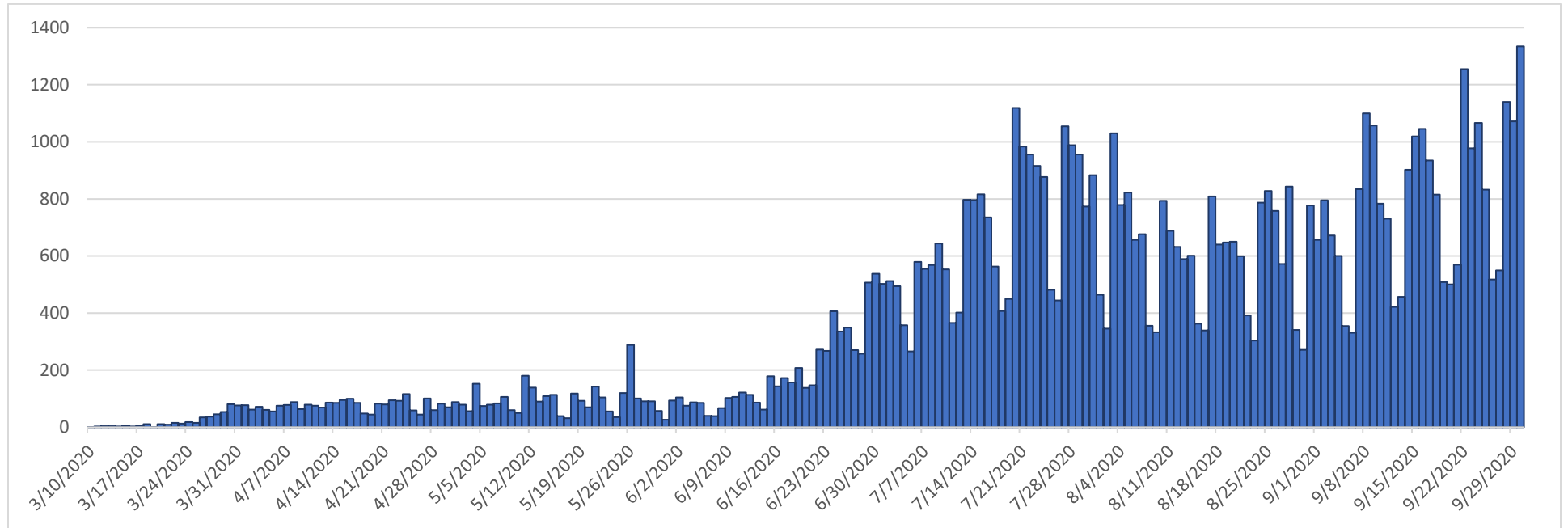
Comorbidities	Number (%)
At least 1 chronic condition*	773 (74.7)
Chronic heart or circulatory disease	573 (55.4)
Diabetes	381 (36.8)
Chronic renal failure	204 (19.7)
Chronic lung failure	231 (22.3)
Chronic liver failure	33 (3.2)

\*Chronic conditions include; chronic heart or circulatory disease, diabetes, chronic lung failure, chronic liver failure and renal failure



# RECOVERED CASES

Distribution of recovered cases of COVID-19, March-September 2020, Oklahoma

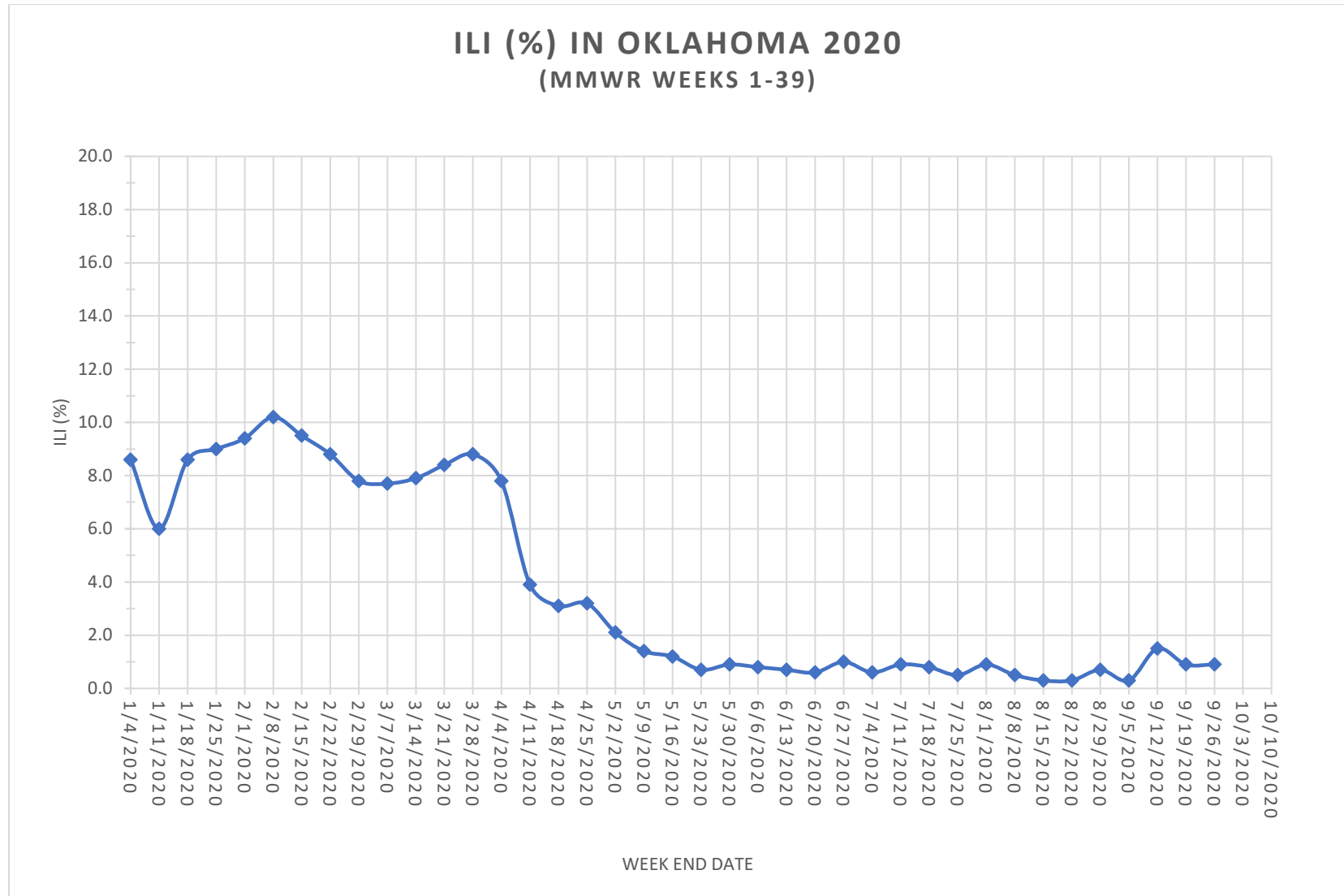


Note: A recovered case is an individual currently not hospitalized or deceased AND 14 days after the onset of symptoms

---

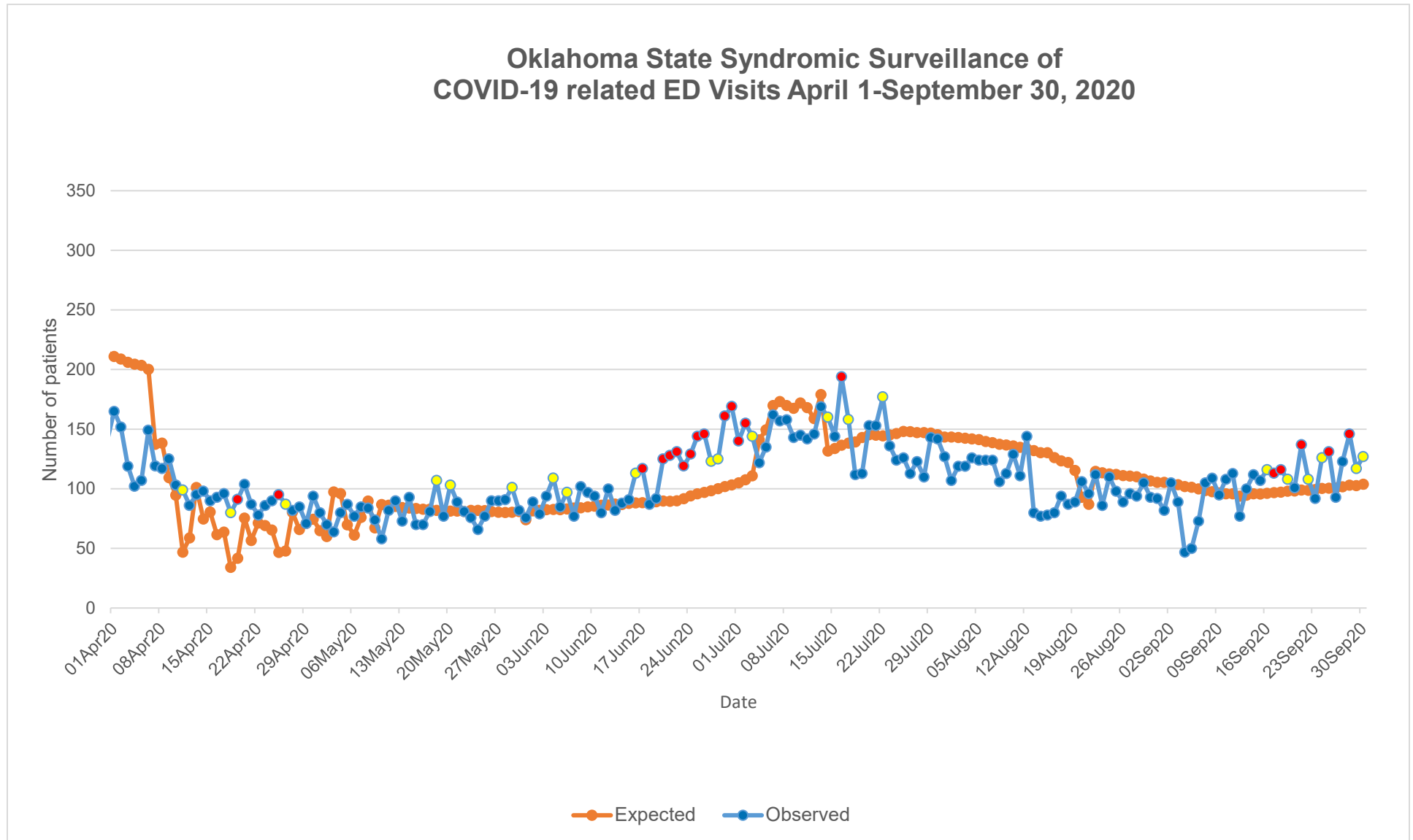
# Symptoms Criteria

Weekly percentage of **Influenza-Like Illness (ILI)** (%), Morbidity and Mortality Weekly Report, Oklahoma, Jan–Sept 2020



**Interpretation:** Data on Influenza-Like Illness remained at 0.9% of outpatient visits exhibiting fever with cough or sore throat. This week's value of 0.9% is below Oklahoma's baseline ILI of 3.8%.

## COVID-19 Related Emergency Department Visits



**Interpretation:** Data from syndromic surveillance shows that the number of COVID-19 related emergency department visits has been significantly higher than the expected range for 5 days in the past 2 weeks with the exception of one day as indicated by the red dots on the observed line.

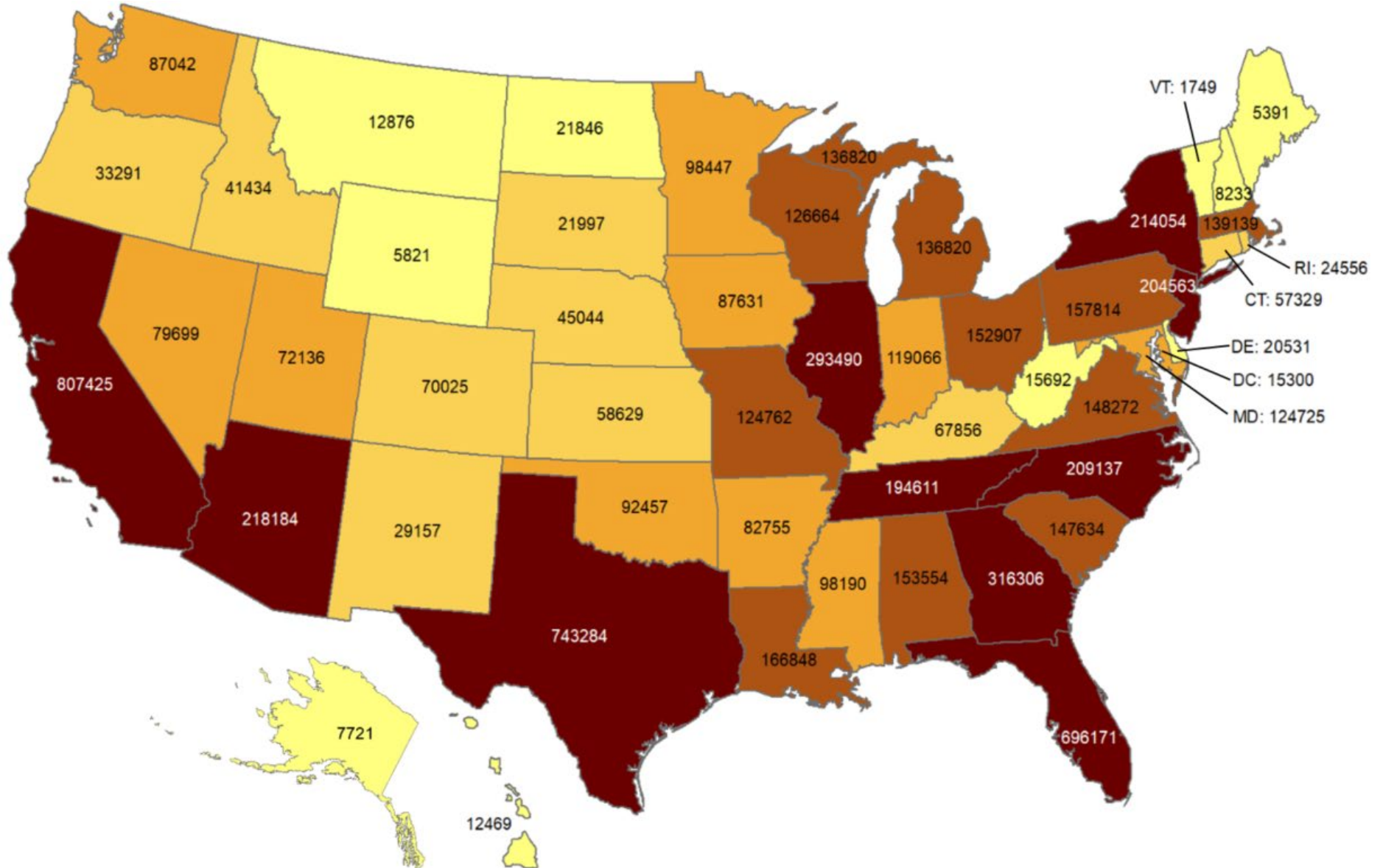
.....



# OKLAHOMA IN COMPARISON

## Total number of reported COVID-19 cases

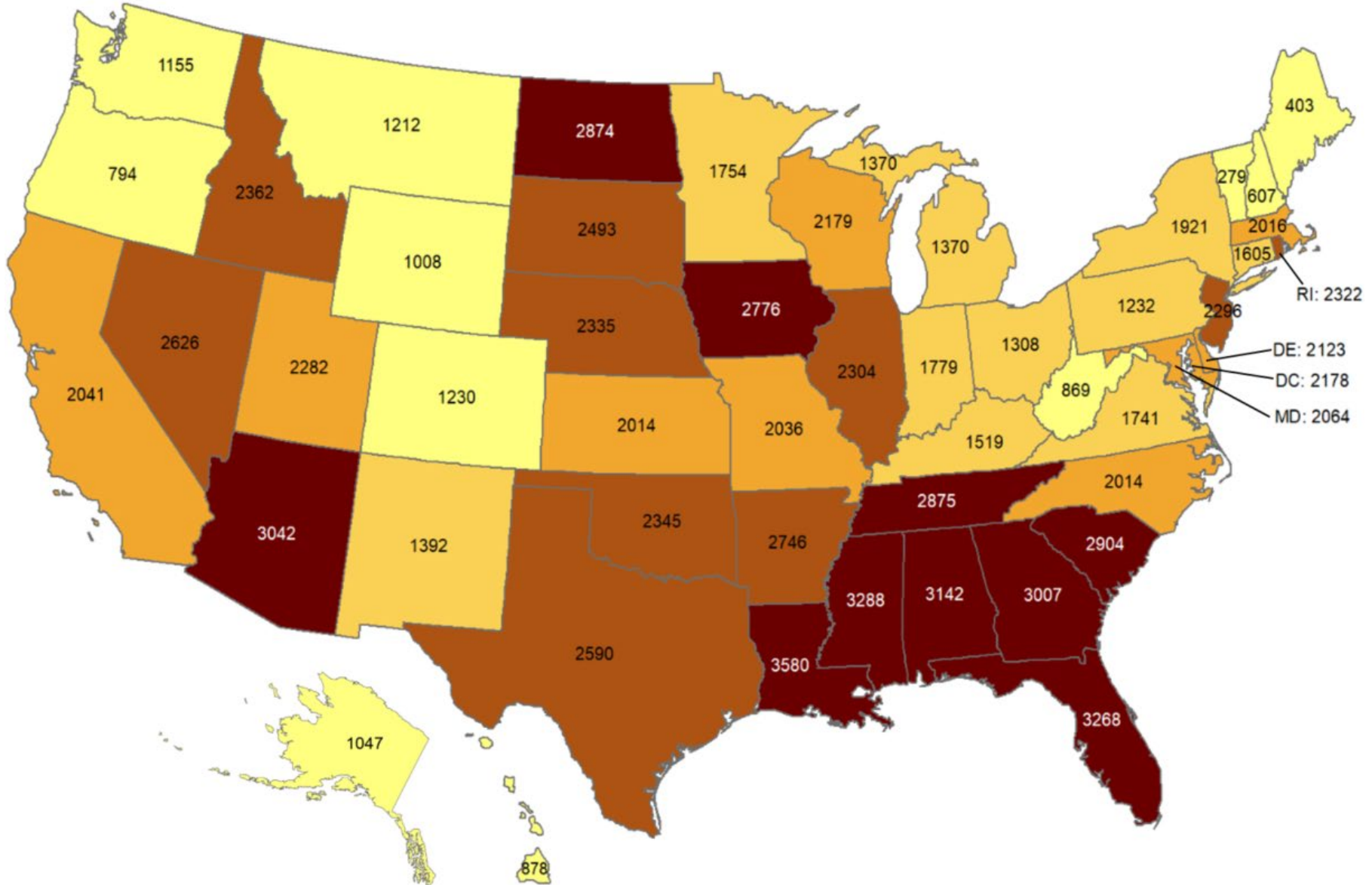
Oklahoma ranks **25** (out of all States and DC) in the total number of reported COVID-19 cases in the US.



Data from CDC. Available at <https://www.cdc.gov/covid-data-tracker/index.html>  
Data as of September 30, 2020

## Cumulative incidence of reported COVID-19 cases

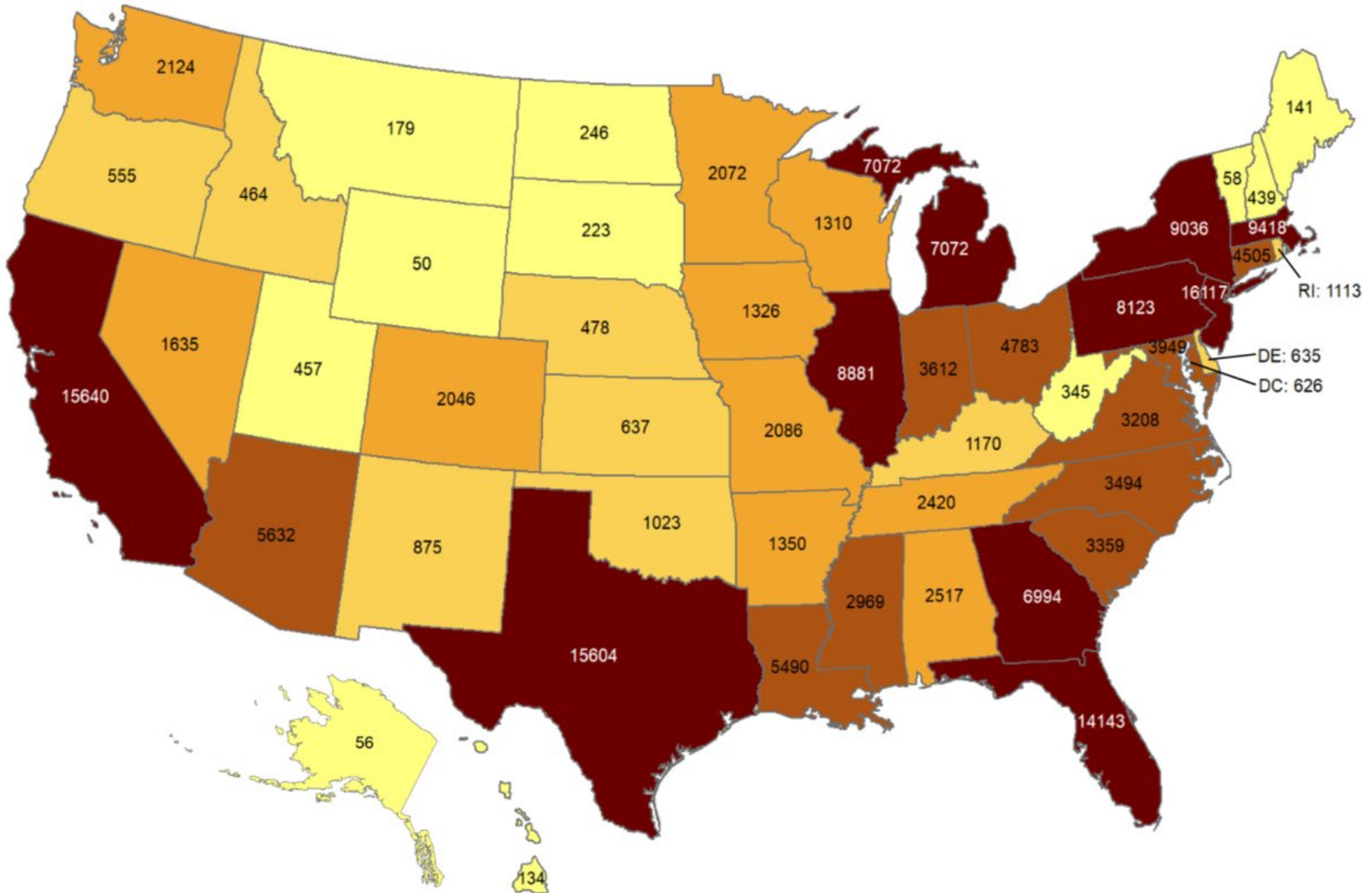
Oklahoma ranks **16** (out of all States and DC) in the cumulative incidence (per 100,000 persons) of reported COVID-19 cases in the US.



Data from CDC. Available at <https://www.cdc.gov/covid-data-tracker/index.html>  
Data as of September 30, 2020

## Total number of reported COVID-19 deaths

Oklahoma ranks **33** (out of all States and DC) in the total number of reported COVID-19 deaths in the US.



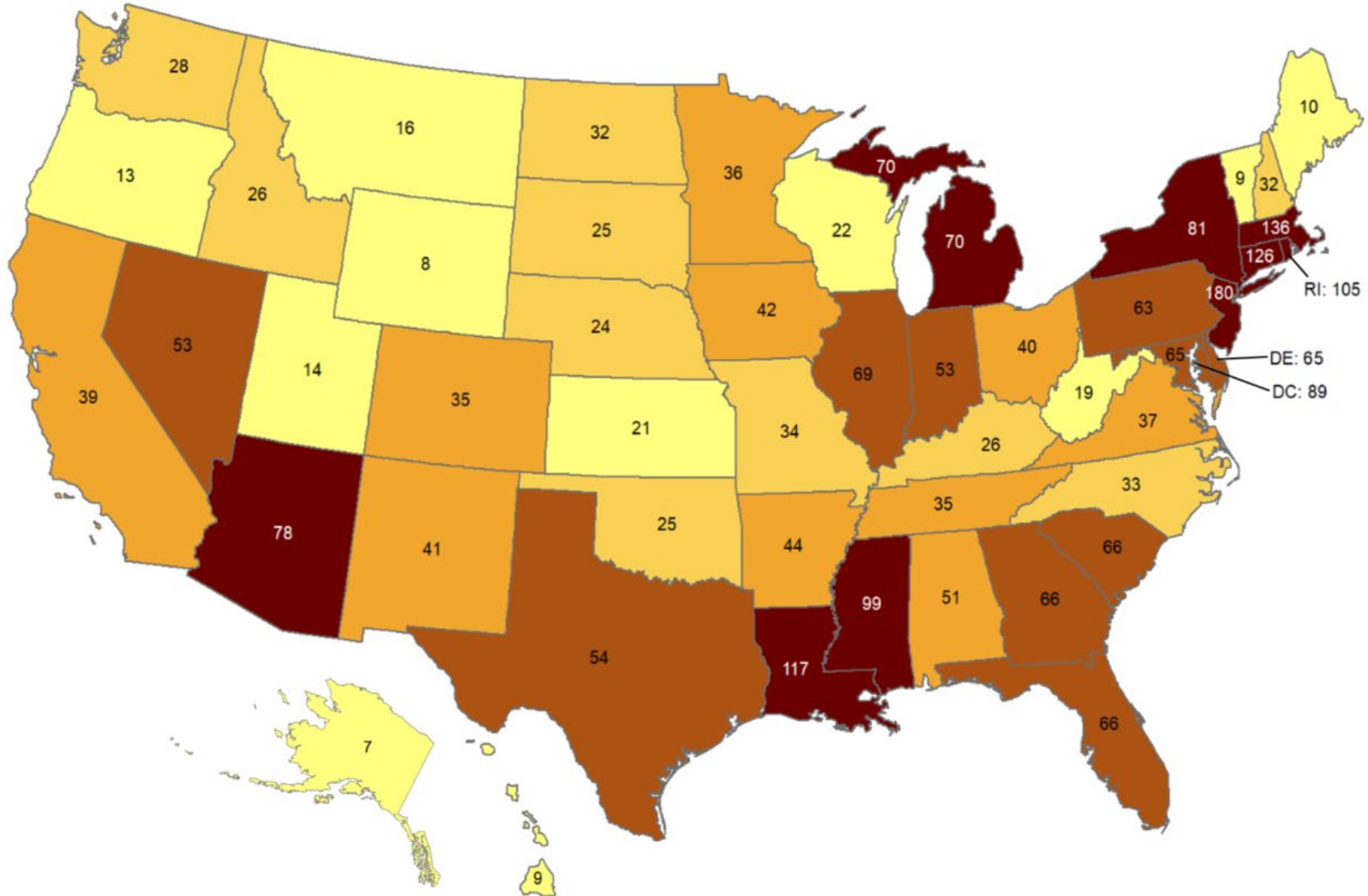
Data from CDC. Available at <https://www.cdc.gov/covid-data-tracker/index.html>

Data as of September 30, 2020

NOTE: CDC numbers include both Confirmed and Probable cases.

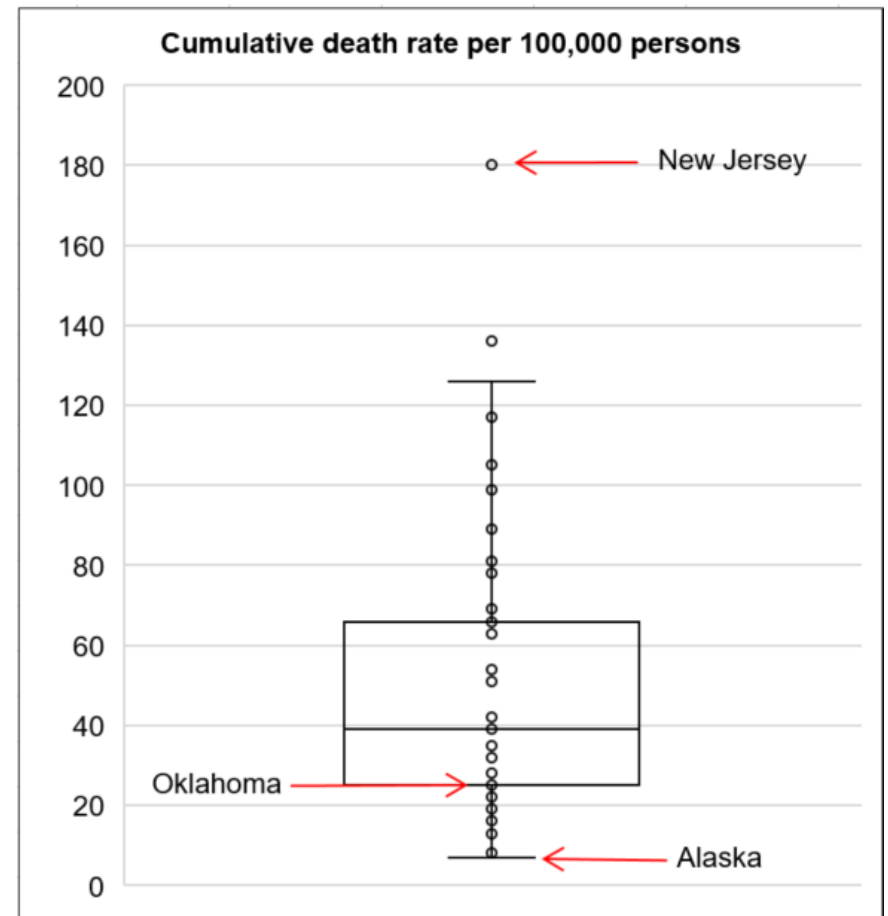
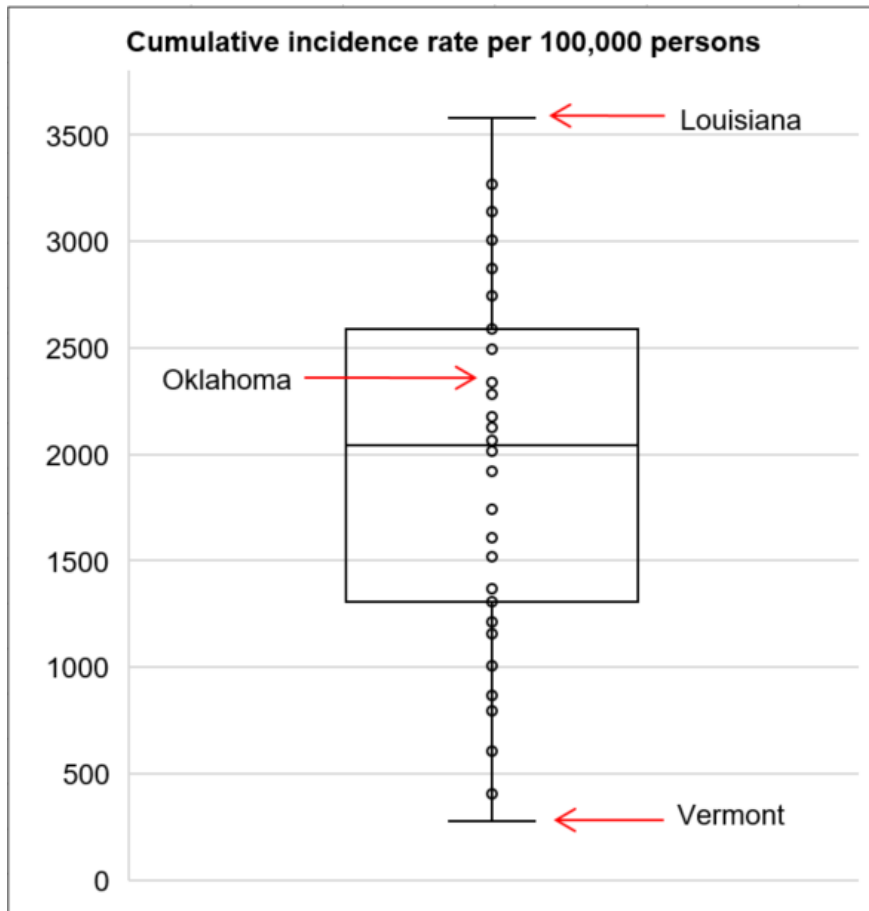
## Cumulative death rate of reported COVID-19 cases

Oklahoma ranks **38** (out of all States and DC) in the cumulative death rate (per 100,000 persons) of reported COVID-19 cases in the US.



Data from CDC. Available at <https://www.cdc.gov/covid-data-tracker/index.html>  
Data as of September 30, 2020

## Cumulative incidence and cumulative death rate of reported COVID-19 cases



**Interpretation:** Oklahoma has cumulative incidence that is **above the median** of the US and cumulative death rate **below the median** of the US.

---

---

## **ACKNOWLEDGEMENT**

The weekly report is made by possible through the efforts of county and city public health and healthcare professionals.

---

## **NOTES**

Every effort is made to ensure accuracy and the data is up-to-date for the time period reported.  
For daily updates on COVID-19, please visit <https://coronavirus.health.ok.gov/>

---

## **DISCLAIMER**

The purpose of publishing aggregated statistical COVID-19 data through the OSDH Dashboard, the Executive Order Report, and the Weekly Epidemiology and Surveillance Report is to support the needs of the general public in receiving important and necessary information regarding the state of the health and safety of the citizens of Oklahoma. These resources may be used only for statistical purposes and may not be used in any way that would determine the identity of any reported cases.